

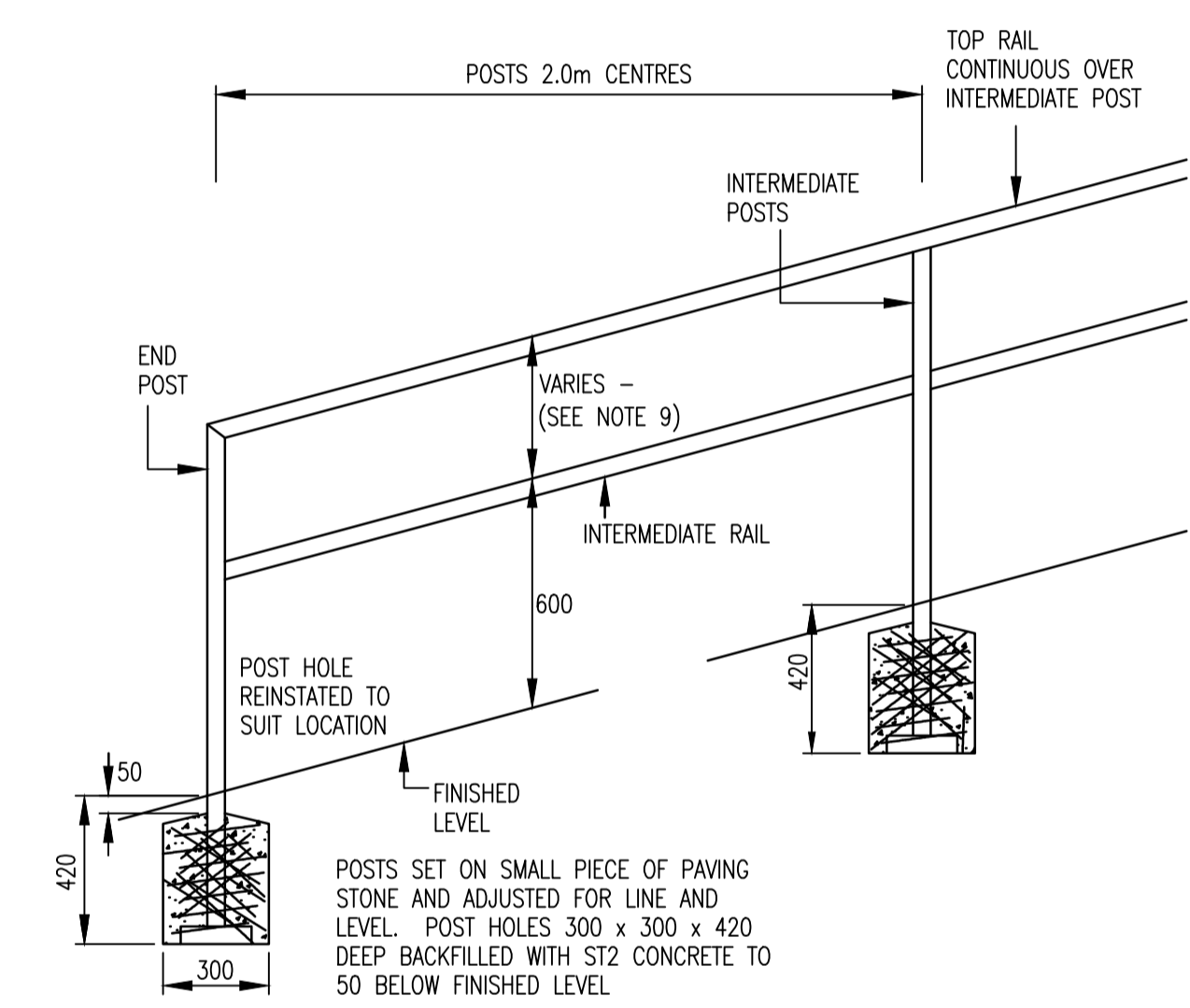
NOTES

- EXCEPT FOR DETAILS SHOWN HERE, THE GUARD RAIL IS TO BE FABRICATED AND ASSEMBLED IN ACCORDANCE WITH STANDARD DRGS. NOS. HD/SD/04/02
HD/SD/04/03
HD/SD/04/04
HD/SD/04/05
- FOR CONTRACTS NOT UNDER HIGHWAYS AGENCY SPECIFICATION FOR HIGHWAY WORKS CONCRETE REFERENCE C25 SHOULD BE USED.

PEDESTRIAN GUARDRAILS WITH HORIZONTAL PANELS
N.T.S.

NOTES

- HANDRAIL POSTS AND RAILS SHALL BE PREPARED FROM 48.3mm x 5.2mm MILD STEEL CIRCULAR HOLLOW SECTION.
- ALL HANDRAIL COMPONENTS, SHALL BE JOINTED BY WELDING.
- ENDS OF END POSTS AND TOP RAILS SHALL BE CUT TO ANGLE SHOWN BEFORE WELDING.
- ENDS OF INTERMEDIATE RAILS SHALL BE CUT TO ANGLE TO SUIT POSTS BEFORE WELDING.
- TOP RAILS SHALL BE JOINTED WITHIN 300mm OF INTERMEDIATE POSTS.
- ALL HANDRAIL COMPONENTS SHALL BE GALVANISED TO BS EN ISO 1461 AND ANY AREAS OF GALVANISING DAMAGED BY CUTTING, WELDING, OR EXCESSIVELY ROUGH TREATMENT SHALL BE RENOVATED IN ACCORDANCE WITH BS EN ISO 1461.
- HANDRAIL SHALL BE PROTECTED IN ACCORDANCE WITH SERIES 1900 OF THE SPECIFICATION FOR PEDESTRIAN GUARDRAIL. THE FINISHED PAINT COLOUR SHALL BE BS4800 No. 08B25.
- HANDRAIL SHALL BE SET TO FOLLOW FINISHED LEVELS IN A SMOOTH FLOWING ALIGNMENT TO THE SATISFACTION OF THE ENGINEER.
- HEIGHT OF TOP RAIL TO BE:
a) LEVEL SURFACE : 1000mm ABOVE
b) RAMP : 900mm ABOVE
c) STEPS : 850mm ABOVE PITCH LINE
- THIS DETAIL IS FOR HANDRAILS ONLY. THERE ARE SPECIFIC REQUIREMENTS FOR BARRIERS.



50mm DIAMETER HANDRAIL DETAIL
N.T.S.

DO NOT SCALE

NOTES:
1. ALL DIMENSION IN MILLIMETERS (mm) AND ALL LEVELS IN m AOD UNLESS SPECIFIED OTHERWISE.

UNTIL TECHNICAL APPROVAL HAS BEEN OBTAINED FROM THE RELEVANT LOCAL AUTHORITIES OR STATUTORY BODIES, IT SHOULD BE UNDERSTOOD THAT ALL DRAWINGS ARE ISSUED AS PRELIMINARY AND NOT FOR CONSTRUCTION. SHOULD THE CONTRACTOR AND / OR EMPLOYER COMMENCE WORK PRIOR TO APPROVAL BEING GIVEN, IT IS ENTIRELY AT THEIR OWN RISK

PO1	01/06/2023	MW	FIRST ISSUE	NS	DK
REV	DATE	BY	DESCRIPTION	CHK	APP

DRAWING STATUS: **S2 - FOR INFORMATION**

3 Wellington Place, Leeds, LS1 4AP, UK
T+ 44 (0) 113 395 6200, F+ 44 (0) 113 395 6201
wsp.com

CLIENT: **BDW HOMES WEST YORKSHIRE**

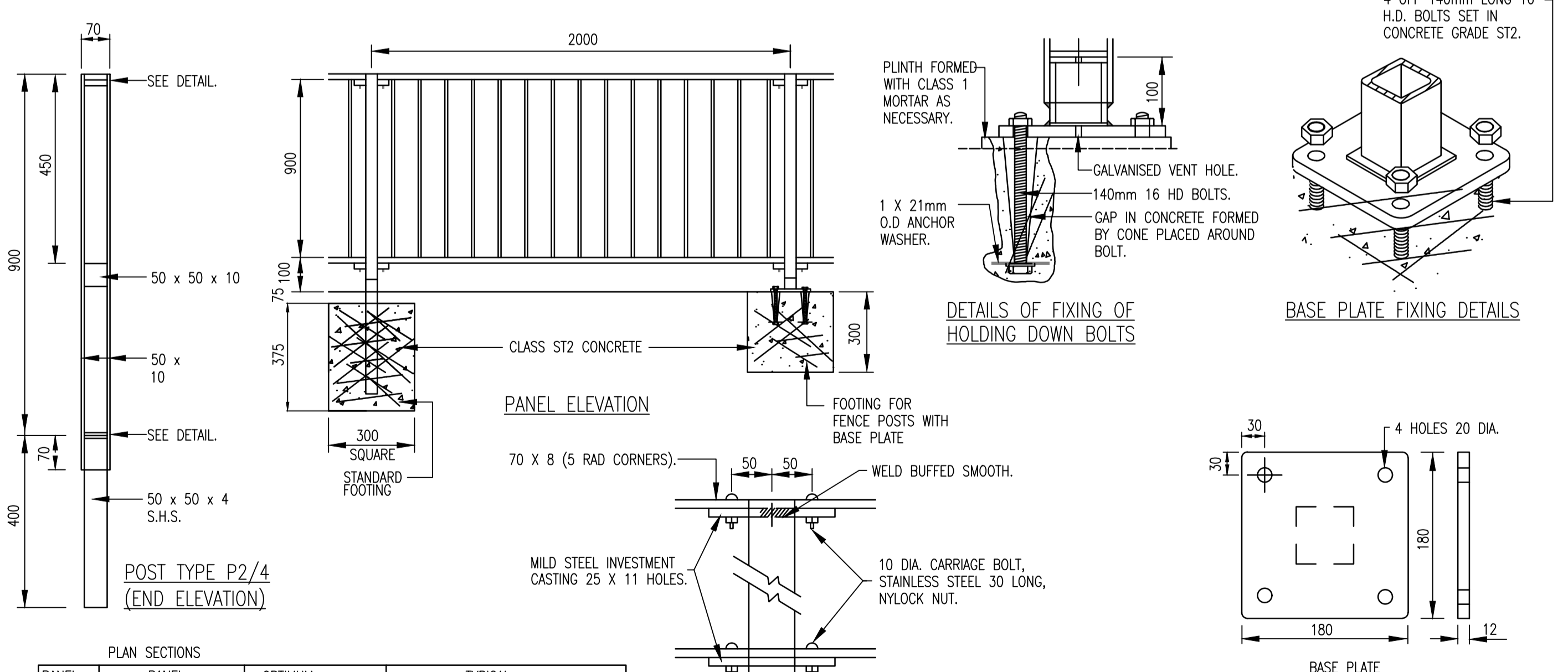
ARCHITECT: **JRP ARCHITECTURE**

SITE/PROJECT: **WHITECHAPEL ROAD, CLECKHEATON**

TITLE: **GUARD RAIL DETAILS**

SCALE @ A1:	AS SHOWN	CHECKED:	NS	APPROVED:	DB
PROJECT NO:	70055404	DESIGNED:	MW	DRAWN:	MW
		DATE:	June 23		
DRAWING NO:	H8040-0736 DETAILS - ENGINEERING_AFU_	REV:			
	S38 PH 2 GUARD RAIL DETAILS				P01

© WSP UK Ltd



PLAN SECTIONS

PANEL TYPE	PANEL LAYOUT	OPTIMUM SIGHT ANGLE	TYPICAL USES
V2		2.5° TO 5°	STRAIGHT ROADS MODERATE TO HIGH SPEED.
V4		5° TO 14°	STRAIGHT ROADS, LOW TO MODERATE SPEED, CURVES
V8		MORE THAN 14°	CURVES LESS THAN 15m RADIUS, E.G. BELLMOUTH.

Code	Infill
V2	V4
V8	12

NOTES

- STEEL TO BE GRADE S275J0H TO BS EN 10025, 10113, 10210-1
- WELDS TO BE 5-FILLET WELDS TO BS EN 948.
- DESIGN AND CONSTRUCTION TO BS 7818.
- STANDARD FINISH HOT DIP GALVANISED BS EN ISO 1461

PEDESTRIAN BARRIER SYSTEM
N.T.S.

File name: UK:\VSP\GROUP\CENTRAL DATA\PROJECTS\70055404 - S38 WORKS\WHITECHAPEL_CLECKHEATON\03\WIP\DEV\DEVELOPMENT\03 DRAWINGS\S38 PHASE 2\PLANS\H8040-0736 DETAILS - ENGINEERING_AFU_S38 PH 2 GUARD RAIL DETAILS_P01.DWG, printed on 01 June 2023 17:27:24, by Wili.Michael