



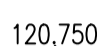



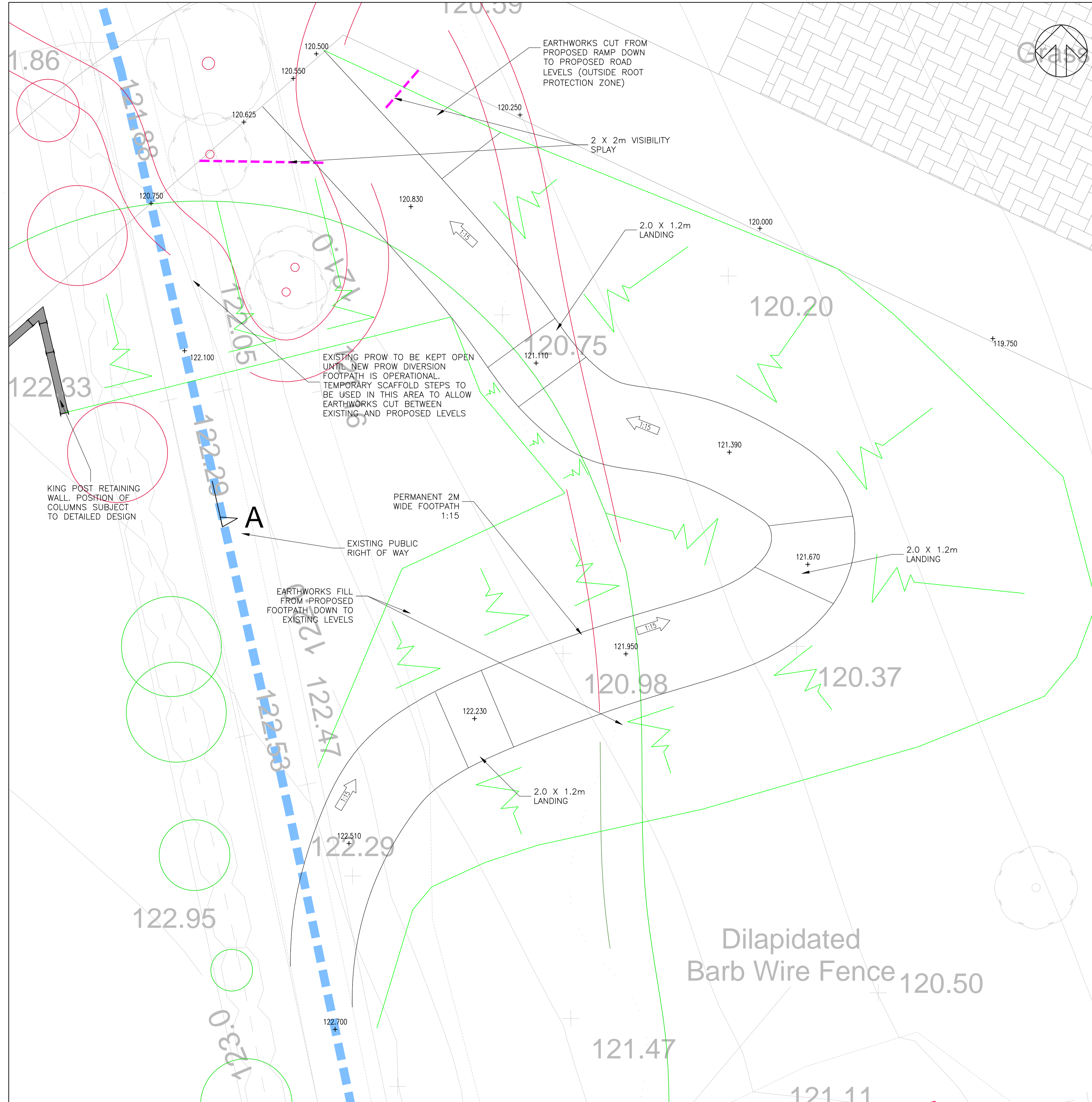
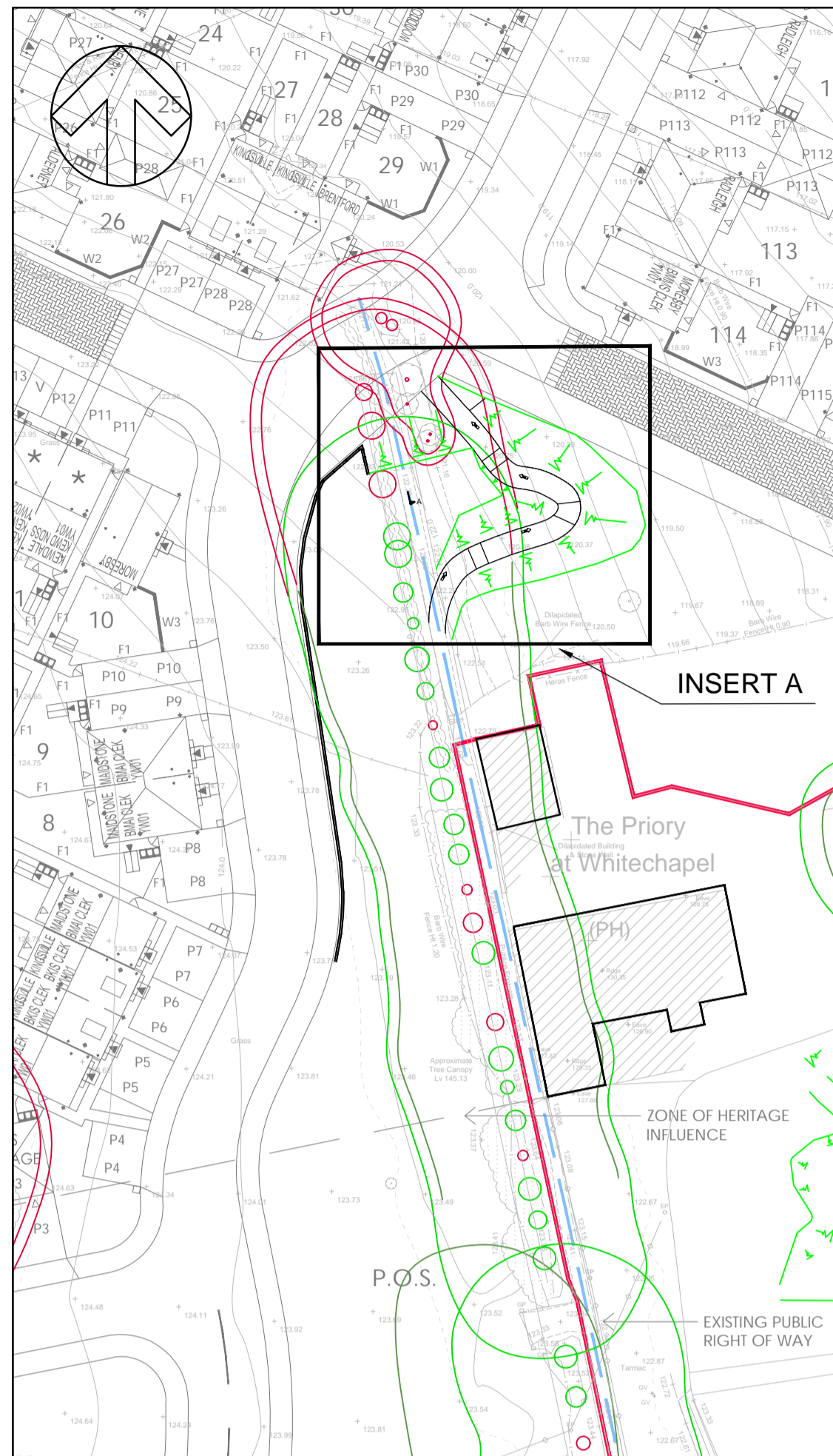
DO NOT SCALE

NOTES:

1. ALL DIMENSIONS IN m AND LEVELS IN m AOD.

LEGEND

-  TREE TO BE REMOVED
-  TREE TO BE RETAINED
-  EXISTING PROW ROUTE
-  PROPOSED RETAINING WALL
-  120.750 PROPOSED LEVEL
-  SITE BOUNDARY



NOTES

1. THE PROPOSALS ON THIS DRAWING ARE SUBJECT TO DISCUSSION WITH THE PROW OFFICER
2. DESIGN AND CONSTRUCTION MUST BE READ IN ACCORDANCE WITH THE ARB METHODOLOGY AND SUPERVISION WITH THE TREE CONSULTANT ECUS

INSERT A - STEP GENERAL ARRANGEMENT
SCALE 1:50

REV	DATE	BY	DESCRIPTION	CHK	APP
P03	04/01/22	MW	UPDATED TO SUIT PROW OFFICER COMMENTS	NS	DB
P02	02/12/22	MW	RAMP FOOTPATH RE-ROUTE	NS	DB
P01	28/11/22	MW	FIRST ISSUE	NS	DB

DRAWING STATUS: S1- FOR COORDINATION



3 Wellington Place, Leeds, LS1 4AP, UK
T+ 44 (0) 113 395 6200, F+ 44 (0) 113 395 6201
wsp.com

CLIENT: BDW HOMES WEST YORKSHIRE

ARCHITECT:

SITE/PROJECT: WHITECHAPEL ROAD, CLECKHEATON

TITLE: PROW RAMP OPTION PLAN

SCALE @ AT:	CHECKED:	APPROVED:
AS SHOWN	NS	DB

PROJECT NO:	DESIGNED:	DRAWN:	DATE:
70052051	MS	MW	January 23

DRAWING NO: H8040-0014_Details - Engineering_AFU_...
PROW Ramp Option Plan_ P03

© WSP UK Ltd

File name: \\UK.VSPGROUP\CENTRAL_DATA\PROJECTS\70052051\005400\005404_S38 WORKS_WHITECHAPEL_CLECKHEATON\WIP\DEVELOPMENT\DRAWINGS\SS8_SECTION_38_PLANS\H8040-0014_DETAILS - ENGINEERING_AFU_PROW RAMP OPTION PLAN_P03.DWG, printed on 05 January 2023 14:46:38, by Vili, Michael