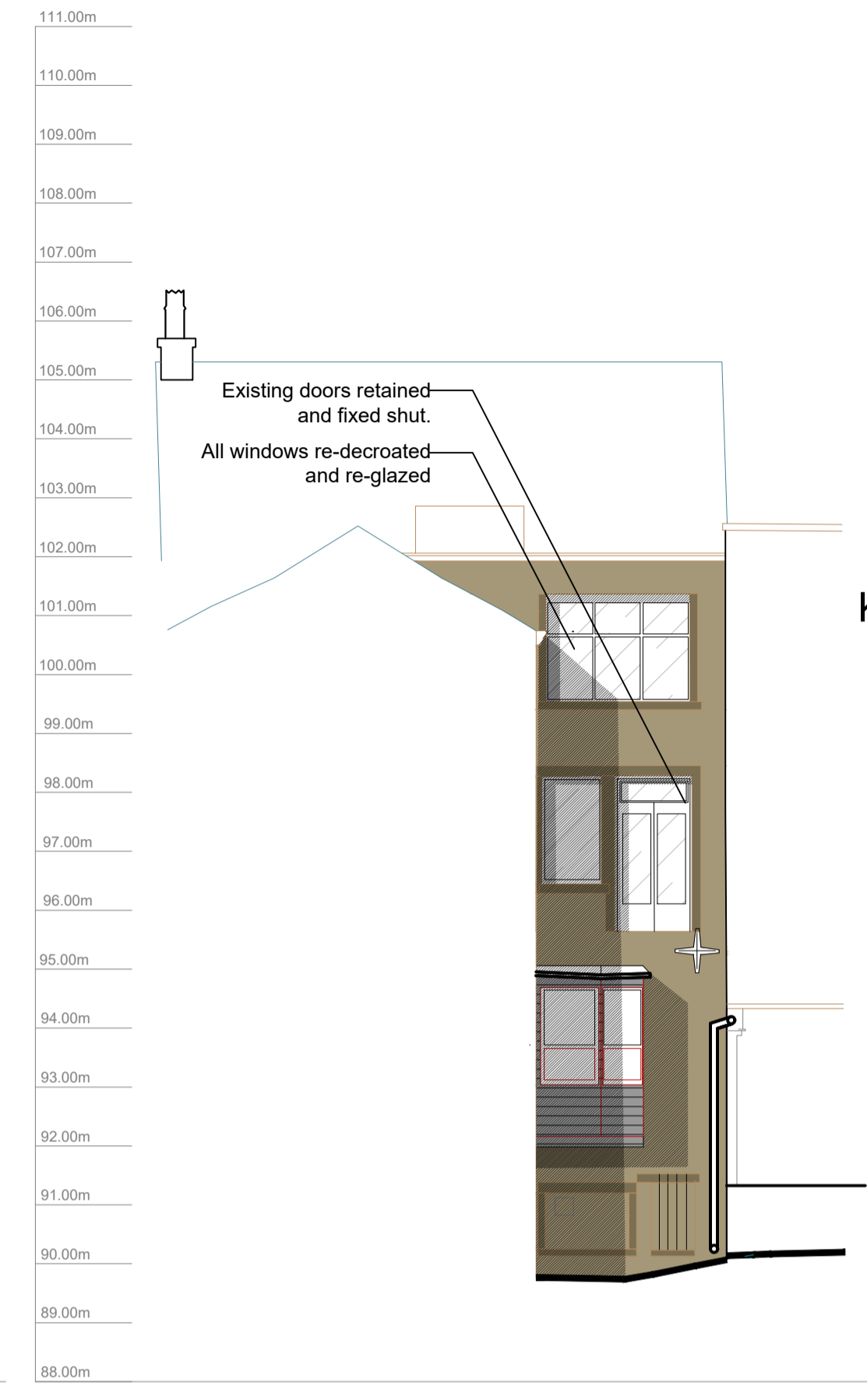


Only figured dimensions should be used.
 Scaled dimensions should be checked with the Architect.
 This drawing together with the design, is the property and copyright of the Architect and must not be reproduced without written permission



ELEVATION 1 - ALBERT YARD

WINDOW TREATMENT	
1	EXISTING CASSEMENT RETAINED AND REDECORATED.
2	EXISTING CASSEMENT RETAINED AND REDECORATED.
3	EXISTING CASSEMENT RETAINED AND REDECORATED.
4	EXISTING CASSEMENT RETAINED AND REDECORATED.
5	EXISTING CASSEMENT RETAINED AND REDECORATED.
6	EXISTING CASSEMENT RETAINED AND REDECORATED.
7	EXISTING CASSEMENT RETAINED AND REDECORATED.
8	EXISTING CASSEMENT RETAINED AND REDECORATED.
9	EXISTING CASSEMENT RETAINED AND REDECORATED.
10	EXISTING CASSEMENT RETAINED AND REDECORATED.
11	EXISTING CASSEMENT RETAINED AND REDECORATED.
12	EXISTING CASSEMENT RETAINED AND REDECORATED.
13	EXISTING CASSEMENT RETAINED AND REDECORATED. LOUVERED PANES REMOVED AND GLAZING BAR REINTRODUCED.
14	EXISTING CASSEMENT RETAINED AND REDECORATED.
15	EXISTING CASSEMENT RETAINED AND REDECORATED.
16	EXISTING CASSEMENT RETAINED AND REDECORATED. BARS REMOVED.
17	EXISTING CASSEMENT RETAINED AND REDECORATED. BARS REMOVED.
18	DOOR REMOVED AND REPLACED WITH FIXED FULL HEIGHT TIMBER FRAMED FINED LIGHT WINDOW.
19	EXISTING CASSEMENT RETAINED AND REDECORATED. BARS REMOVED.
20	EXISTING SASH RETAINED AND REDECORATED. BARS REMOVED.
21	EXISTING SASH RETAINED AND REDECORATED. BARS REMOVED.
22	EXISTING WINDOW REMOVED. NEW TIMBER CASSEMENT WINDOW INSTALLED WITH LOW PROFILE DOUBLE GLAZING.
23	EXISTING WINDOW REMOVED. NEW TIMBER CASSEMENT WINDOW INSTALLED WITH LOW PROFILE DOUBLE GLAZING.
24	EXISTING WINDOW REMOVED. NEW TIMBER CASSEMENT WINDOW INSTALLED WITH LOW PROFILE DOUBLE GLAZING.
25	EXISTING WINDOW REMOVED. NEW TIMBER CASSEMENT WINDOW INSTALLED WITH LOW PROFILE DOUBLE GLAZING.
26	EXISTING WINDOW REMOVED. NEW TIMBER CASSEMENT WINDOW INSTALLED WITH LOW PROFILE DOUBLE GLAZING.
27	EXISTING WINDOW REMOVED. NEW TIMBER CASSEMENT WINDOW INSTALLED WITH LOW PROFILE DOUBLE GLAZING.
28	EXISTING WINDOW REMOVED. NEW TIMBER CASSEMENT WINDOW INSTALLED WITH LOW PROFILE DOUBLE GLAZING.
29	EXISTING WINDOW REMOVED AND REPLACED WITH TIMBER SIDE HUNG LOW PROFILE DOUBLE GLAZED WINDOWS TO REPLICATE TAKING IN DOORS ON FLOORS ABOVE.
30	EXISTING WINDOW REMOVED AND REPLACED WITH TIMBER SIDE HUNG LOW PROFILE DOUBLE GLAZED WINDOWS TO REPLICATE TAKING IN DOORS ON FLOORS ABOVE.



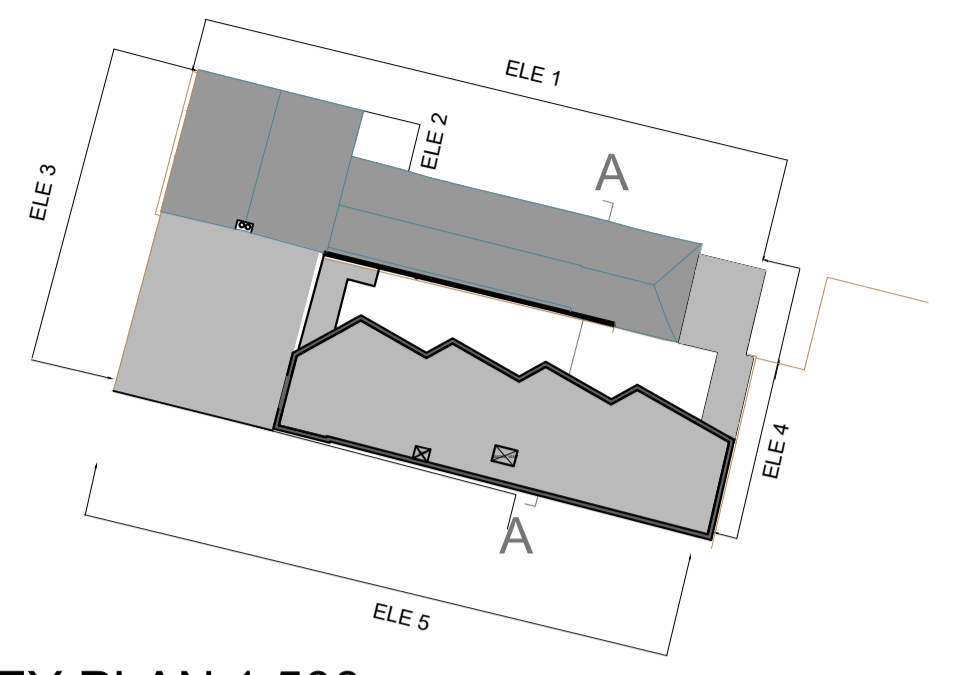
ELEVATION 2 - ALBERT YARD



ELEVATION 3 - NEW STREET



ELEVATION 4 - ALBERT YARD



KEY PLAN 1:500

Rev	Description	Drawn	Auth	Date
E	Cladding materials updated following LPA comments.	JF	JC	05.06.2023
D	Traditional shop fronts shown to Albert Yard corner return to match New Street. Windows 22-30 shown as replacement casements at request of LPA. Feature cladding detail changed to darker colour. Panels between windows now shown as louvers to hide service ducting behind.	JF	JC	18.04.2023
C	Traditional shop fronts shown to New Street retail units. Office unit introduced on Albert Yard, window treatment schedule added for mill range windows. Cladding product added to drawings. Feature cladding shown to create visual interest from Corporation Street.	JF	JC	26.10.2022
B	Fifth floor omitted, floor to floor heights of new blocks reduced. Existing context surveyed and re-drawn.	JF	JC	26.10.2022
A	Residential access moved to former blocked openings of Albert Yard. Bin store moved into former vacant shop unit. Loading bay reinstated to base of new stair core. Stair core block set back. Gates added to loading bay on Albert Yard frontage.	JF	JC	14.04.2022

DO NOT SCALE OFF THIS DRAWING

ACUMEN DESIGNERS & ARCHITECTS

acumenarchitects.co.uk 01484 546 000
 Headrow House, Old Leeds Road, Huddersfield, HD1 1SG

Client: SA ASSOCIATES
 Project: 61-65 NEW STREET, HUDDERSFIELD

Project No: 2655 Drawing No: (100)20 Rev: E

Description: PROPOSED ELEVATIONS SHEET 1

Scale: 1:100@ A1 Date Drawn: JUN'21 Drawn By: JF Authorised By: JC

Purpose of Issue: Planning Building Regs Tender Construction Comment Info