

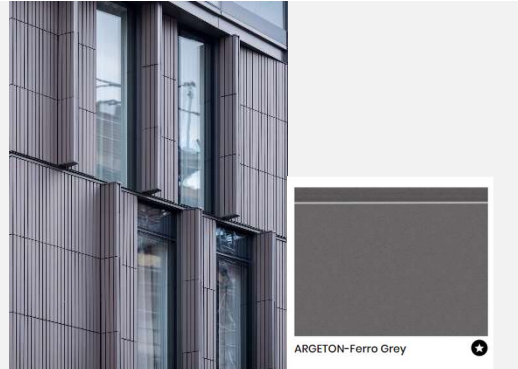
ACUMEN

DESIGNERS & ARCHITECTS

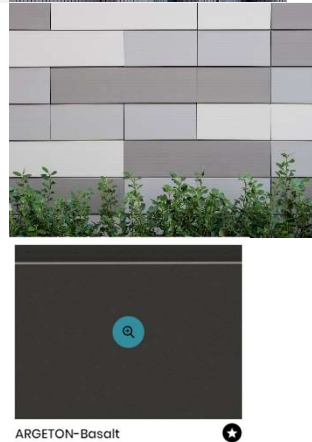
Material 18.04.2023 New JF & Job ref – 2655
Schedule REV A – 05.06.2023 Street HG

Item Description Location Image

1 Argeton Ferro grey fluted ceramic cladding New build tower element external walls



2 Argeton cladding rectangle profile Basalt Nb. First image shows format not colour. Feature wall wrap visible from cultural heart development & Corporation Street.







3 Regular coursed natural stone New stair core



4 Off white silicone render Infill panels on new stair tower



5	RAL 7016 aluminium windows with square profile	All windows within new tower	
6	RAL 7016 aluminium louvres	Infill between windows on new tower	
7	Crittall glazing	Glazing to new stair tower	
8	Vandal/ arson/ rodent resistant louvre doors	Bin stores	
9	Existing timber sanded down, primed and overcoated in new RAL 7016 paint. Window bars removed and new clear glazing installed in existing frames.	Oriel window off Albert Yard.	
10	General	Existing areas of walling will be cleaned to restore the surfaces and uplift the building.	