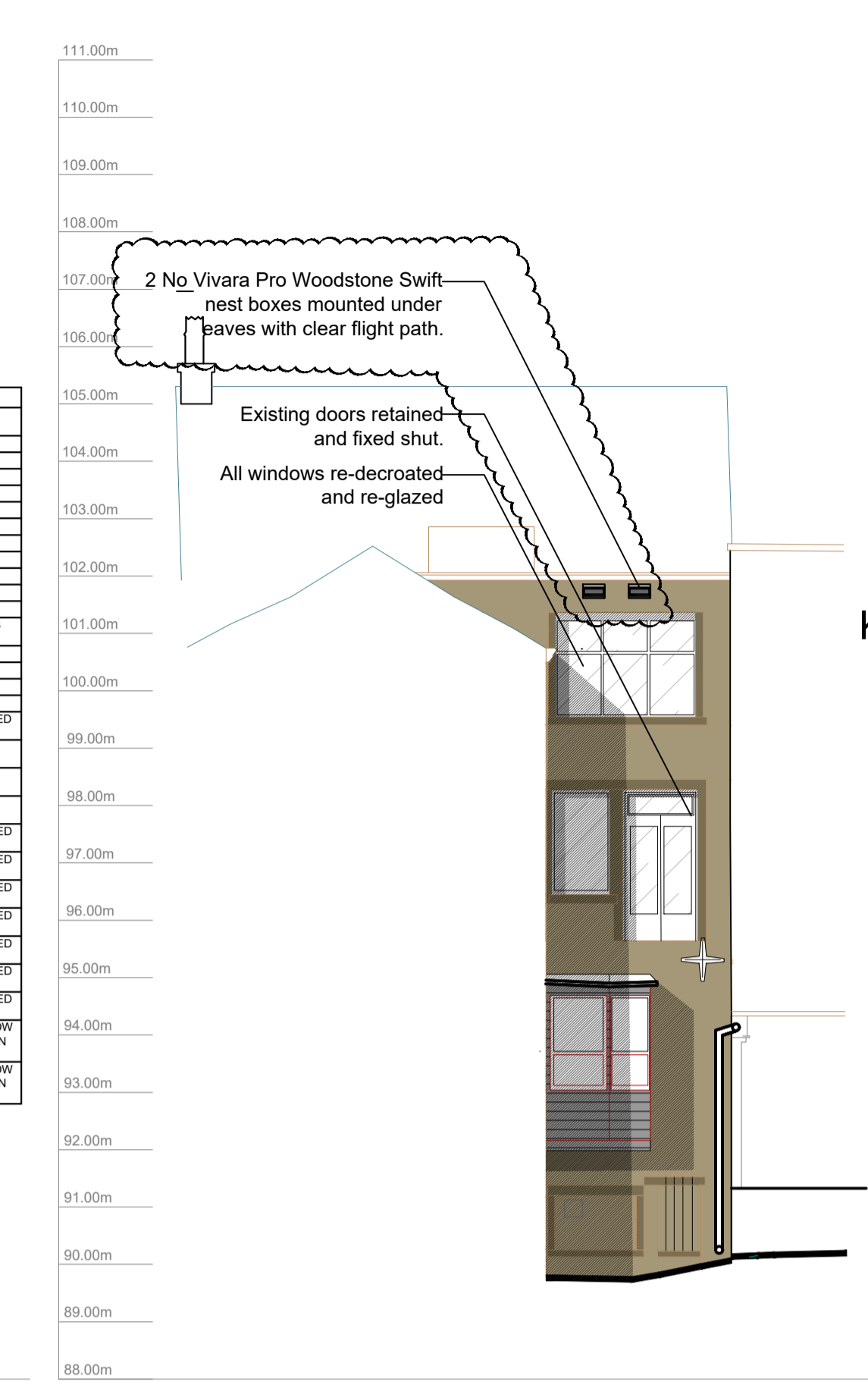


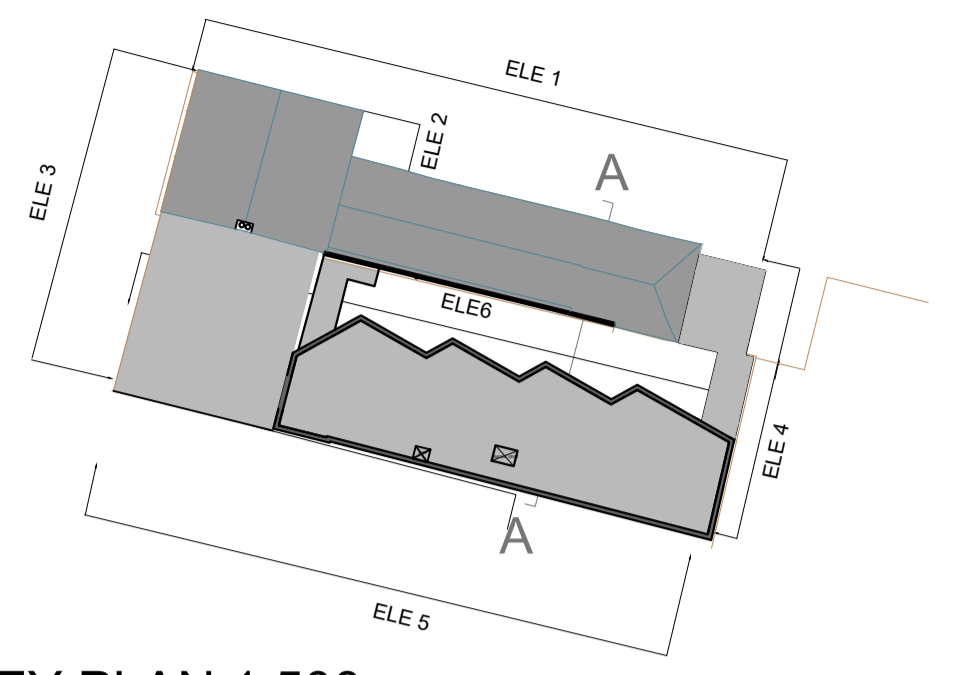
Only figured dimensions should be used.  
 Scaled dimensions should be checked with the Architect.  
 This drawing together with the design, is the property and copyright of the Architect and must not be reproduced without written permission



ELEVATION 1 - ALBERT YARD



ELEVATION 2 - ALBERT YARD



KEY PLAN 1:500



ELEVATION 3 - NEW STREET



ELEVATION 4 - ALBERT YARD

F	Bat & Swift nesting features added following LPA comment.	JF	JC	03.08.2023
E	Cladding materials updated following LPA comments.	JF	JC	05.06.2023
D	Traditional shop fronts shown to Albert Yard corner return to match New Street. Windows 22-30 shown as replacement casements at request of LPA. Feature cladding detail changed to darker colour. Panels between windows now shown as louvers to hide service ducting behind.	JF	JC	18.04.2023
C	Traditional shop fronts shown to New Street retail units. Office unit introduced on Albert Yard, window treatment schedule added for mill range windows. Cladding product added to drawings. Feature cladding shown to create visual interest from Corporation Street.	JF	JC	26.10.2022
B	Fifth floor omitted, floor to floor heights of new blocks reduced. Existing context surveyed and re-drawn.	JF	JC	26.10.2022
A	Residential access moved to former blocked openings of Albert Yard. Bin store moved into former vacant shop unit. Loading bay re-instated to base of new stair core. Stair core block set back. Gates added to loading bay on Albert Yard frontage.	JF	JC	14.04.2022

DO NOT SCALE OFF THIS DRAWING

rev	description	drawn	auth	date
-----	-------------	-------	------	------

**ACUMEN**  
 DESIGNERS & ARCHITECTS

acumenarchitects.co.uk 01484 546 000  
 Headrow House, Old Leeds Road, Huddersfield, HD1 1SG

Client  
**SA ASSOCIATES**

Project  
**61-65 NEW STREET, HUDDERSFIELD**

Project No	Drawing No	Rev
2655	(100)20	F

Description  
**PROPOSED ELEVATIONS SHEET 1**

Scale	Date Drawn	Drawn By	Authorised By
1:100@ A1	JUN'21	JF	JC

Purpose of Issue  
 Planning ● Building Regs ○ Tender ○ Construction ○ Comment ○ Info ○