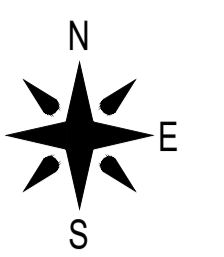


DO NOT SCALE

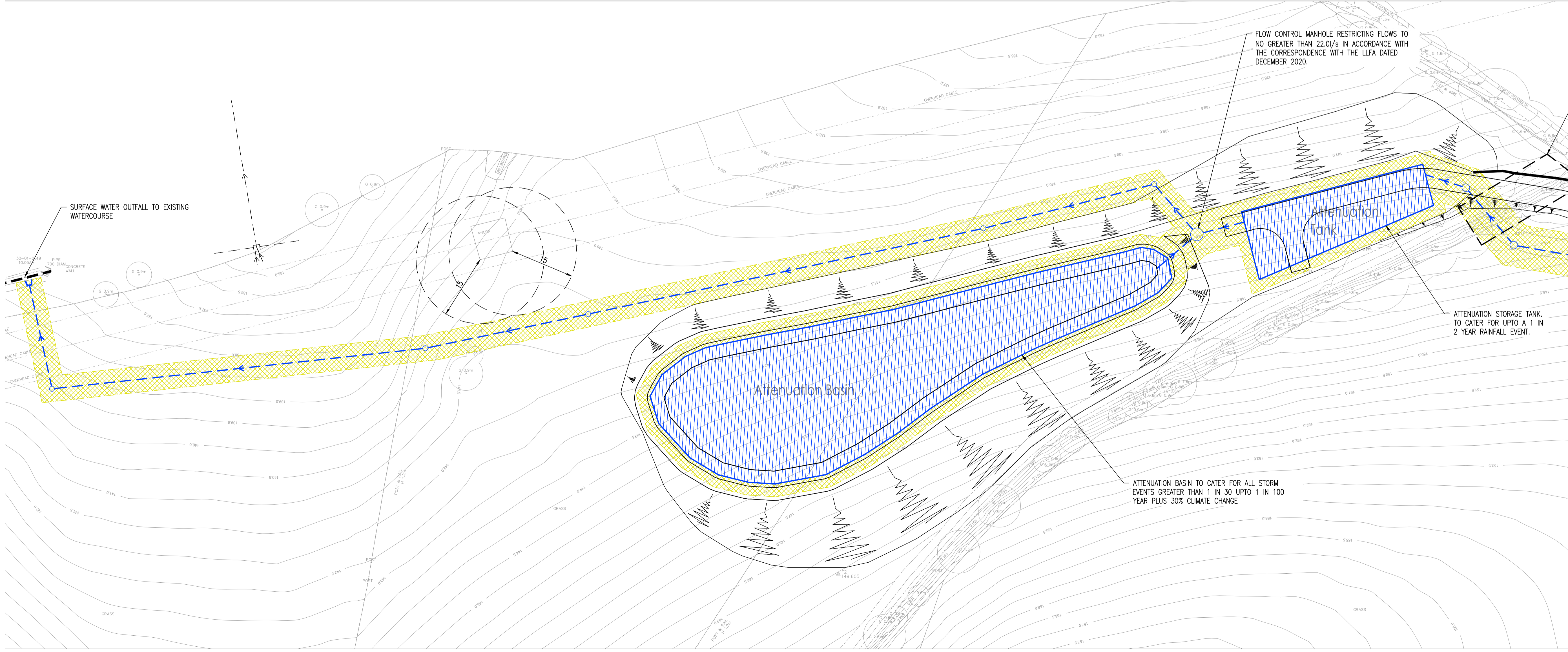
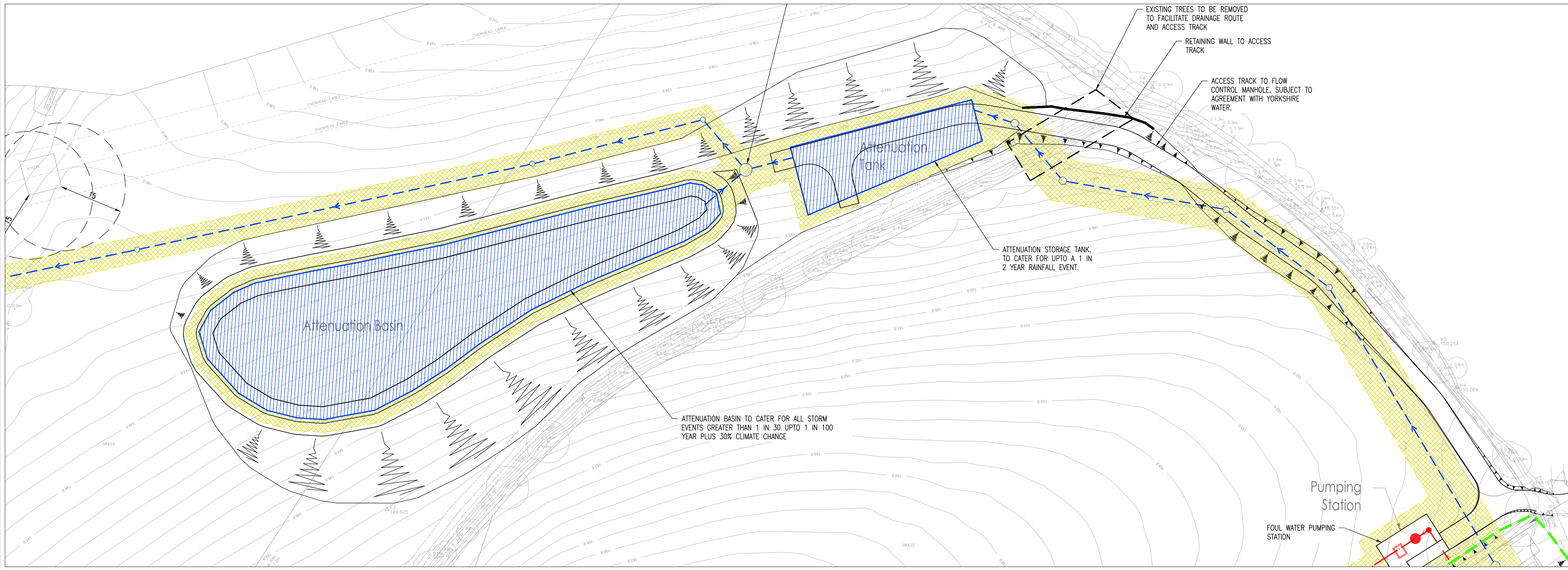


NOTES

1. THIS DRAWING IS BASE UPON REDROW HOMES INDICATIVE SITE LAYOUT DRAWING REF BVF-16-02-03 - PROPOSED SITE LAYOUT AND TOPOGRAPHICAL SURVEY PROVIDED BY THE VENDOR.

KEY

- DEVELOPMENT BOUNDARY
- EXISTING PUBLIC COMBINED DRAINAGE
- EXISTING PUBLIC SURFACE WATER DRAINAGE
- EXISTING PUBLIC FOUL WATER DRAINAGE
- PROPOSED FOUL WATER SEWER NETWORK 1
- PROPOSED FOUL WATER SEWER NETWORK 2
- PROPOSED FOUL RISING MAIN
- PROPOSED SURFACE WATER SEWER/MANHOLE (S104)
- DRAINAGE EASEMENT
- EXISTING WATERCOURSE



REV	DATE	BY	DESCRIPTION	APPROVED
C	28.04.2021	MML	Access track position amended	MML
B	28.04.2021	MML	Revision to attenuation position	MML
A	19.04.2021	MML	Revision to attenuation position	MML

REDROW HOMES

Redrow House, Brunel Road, Wakefield 41 Industrial Estate, WF2 0XG
Tel: +44 (0)1924 822 566 Fax: +44 (0)1924 822 599
www.redrow.co.uk

MARKETING NAME		-	
PROJECT		BRADLEY VILLA FARM HUDDERSFIELD	
TITLE		PROPOSED DRAINAGE LAYOUT OFF SITE SHEET 2 OF 2	
SCALE @ A1:	DESIGN/DRAWN:	APPROVED:	DATE:
1:500	MML	KL	MARCH 2021
PROJECT No:	DRAWING No:	REV:	
4607	4607-16-06-902	C	