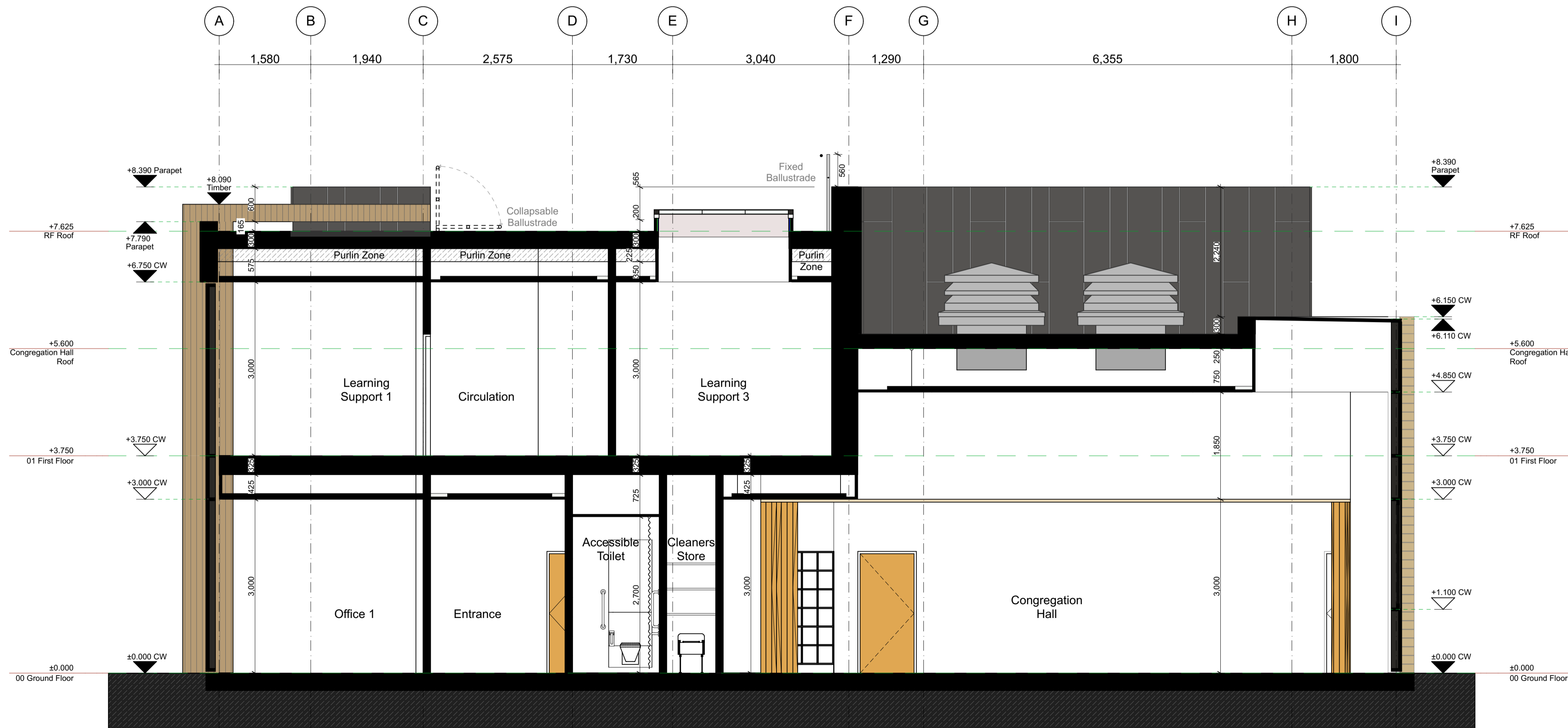


NOTE
Window openable areas and Penthouse Louvers shown indicatively, subject to ventilation strategy confirmation by Mechanical Engineer at Stage 3

Section A-A: Congregation Hall
1:50



P04	Issued for Planning: Parapet to cladding dropped by 385mm, and removed to front facade between GL's 3 & 7. Parapet to Ashlar dropped by 35mm to match block dims. Balustrades, PV zone, and purlins added	RR	CN	29.01.2021
P03	Revised to VE options confirmed by Gleeds in email 21/01/2020	RR	CN	25.01.2021
P02	Revised Stage 2 issue following end user consultation	RR	CN	23.11.2020
P01	Stage 2 Issue	RR	AM	06.11.2020
rev	description	drawn	checked	date

BOND BRYAN
The Church Studio Springvale Road Sheffield S10 1LP
t +44(0)114 266 2040 w www.bondbryan.com
e FCHU@bondbryan.co.uk

Faith Centre
Queensgate Campus
Faith Centre



GA SECTIONS SHEET 1

bba project ref	scale(s)	original paper size
18199	1:50	A0

name:	project	originator	volume	level	type	role	number
-------	---------	------------	--------	-------	------	------	--------

FCUH - BBA - ZZ - ZZ - DR - A - 4011

status:	suitability description:
S2	SUITABLE FOR INFORMATION
revision:	revision description:
P04	PRELIMINARY

This document is © Bond Bryan Architects Ltd. If in doubt ASK. Drawing measurements shall not be obtained by scaling. Verify all dimensions prior to construction. Immediately report any discrepancies on this document to the Architect. This document shall be read in conjunction with associated models, specifications and related consultant's documents.

Section B-B: Congregation Hall
1:50