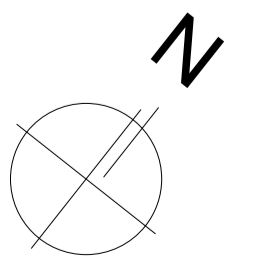
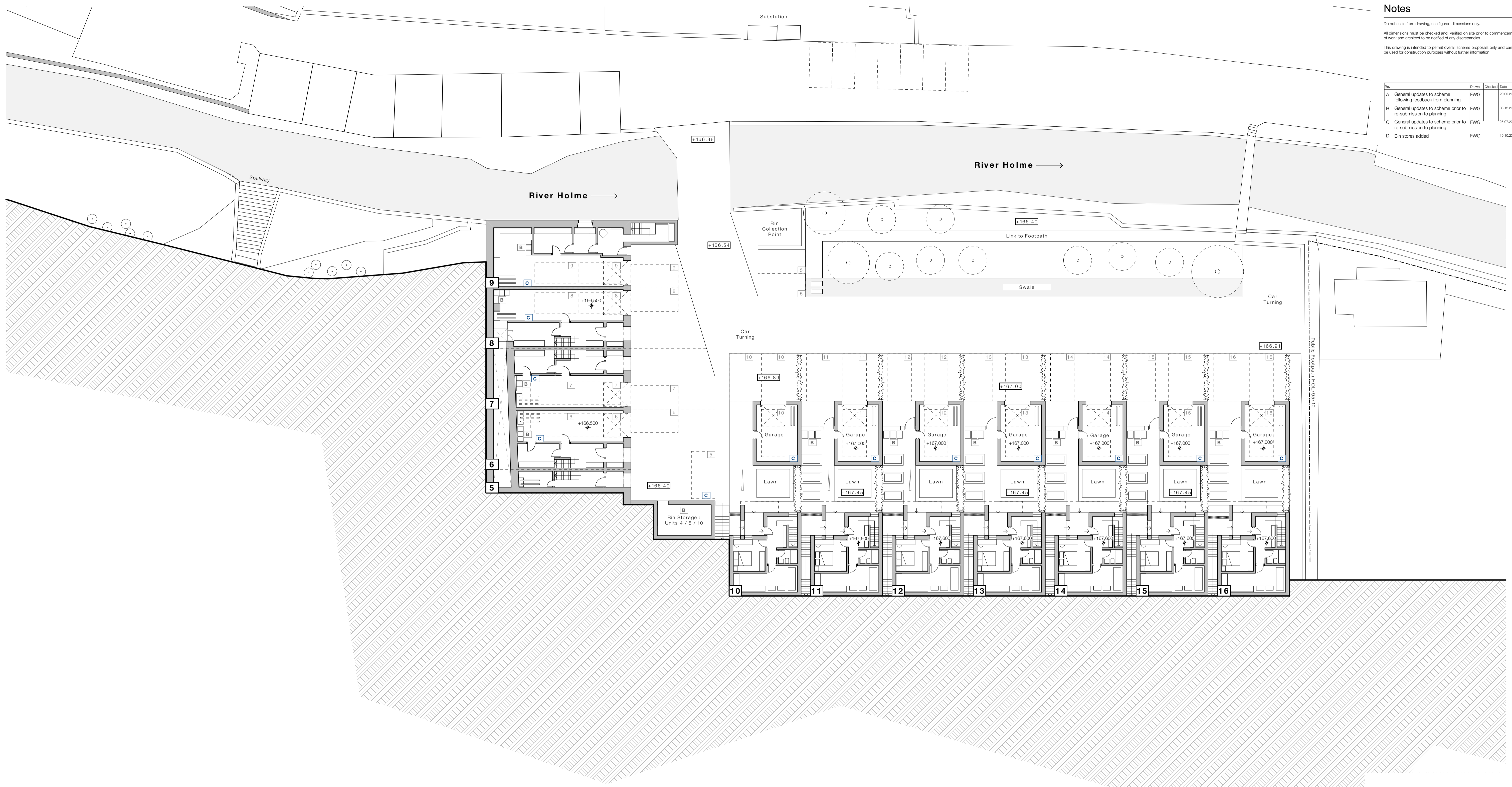


**Notes**

Do not scale from drawing, use figured dimensions only.  
 All dimensions must be checked and verified on site prior to commencement of work and architect to be notified of any discrepancies.  
 This drawing is intended to permit overall scheme proposals only and cannot be used for construction purposes without further information.

Rev	Description	Drawn	Checked	Date
A	General updates to scheme following feedback from planning	FWG		20.05.2021
B	General updates to scheme prior to re-submission to planning	FWG		03.12.2021
C	General updates to scheme prior to re-submission to planning	FWG		25.07.2022
D	Bin stores added	FWG		19.10.2022



<b>Job Title</b> Proposed Residential Development, Hinchcliffe Mill, Holmfirth, HD9 2NX	
<b>Client</b> MD One Ltd	<b>Company</b> AD
<b>Status</b> Planning	<b>Scale @ A1</b> Proposed Lower Ground Floor 1:200 Site Plan
<b>Date</b> Jan '21	<b>Drawn</b> FWG
<b>Drawing No.</b> 3372 (0-) 614	<b>Revision</b> D

**ONE17**  
 ARCHITECTS & INTERIOR DESIGNERS

The Dyehouse, Armitage Bridge  
 Huddersfield, West Yorkshire HD4 7PD  
 T 01484 668 000 F 01484 668 001  
 E solutions@one17design.com

**ONE17DESIGN.COM**