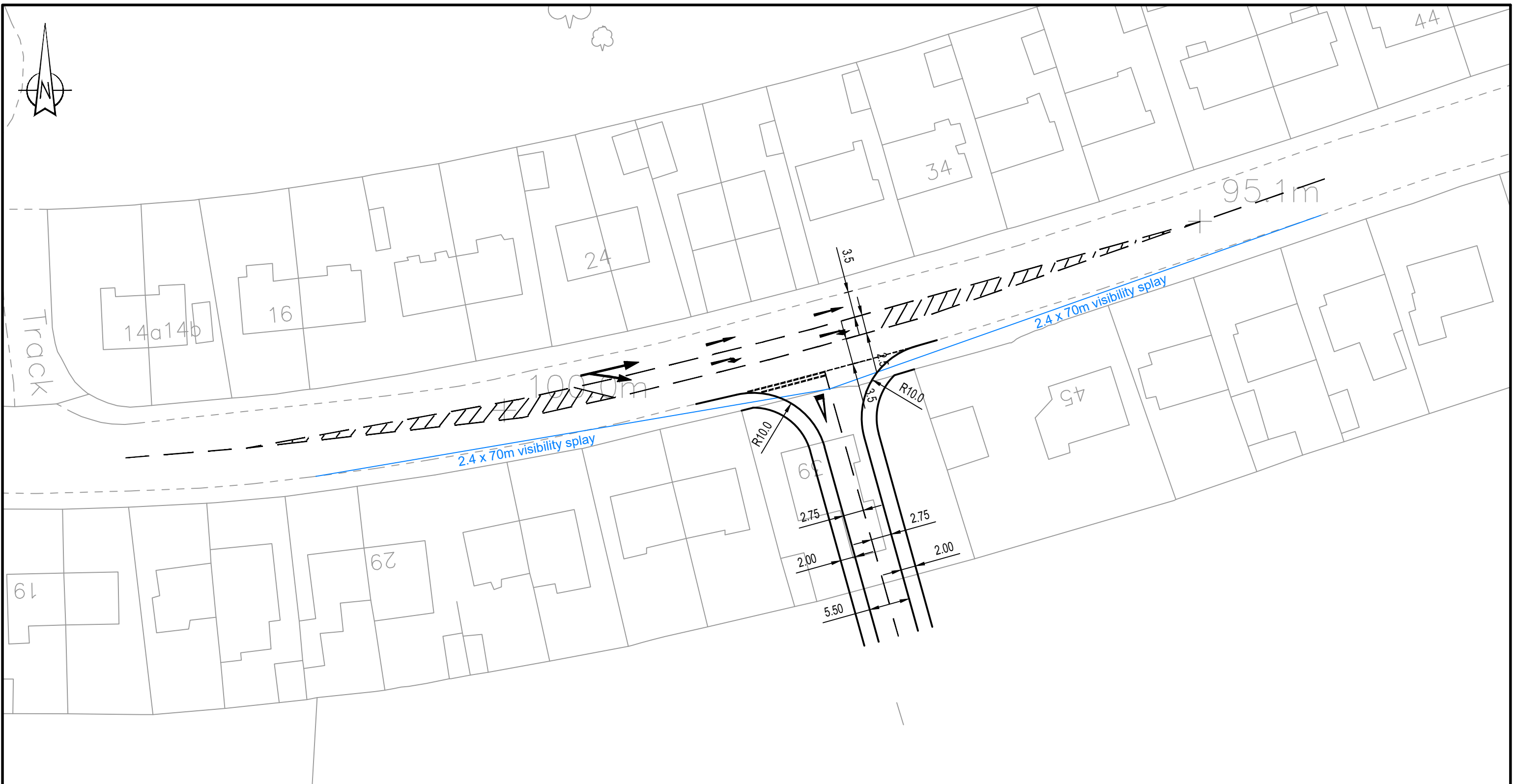


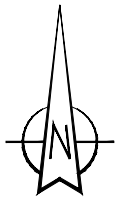
Appendix G – Proposed Site Access Arrangements



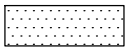
NOTE:
 1. Drawing based on SBA/WYG drawing no. A079758-A-11, dated 09.05.13
 2. Drawing based on Ordnance Survey base mapping.

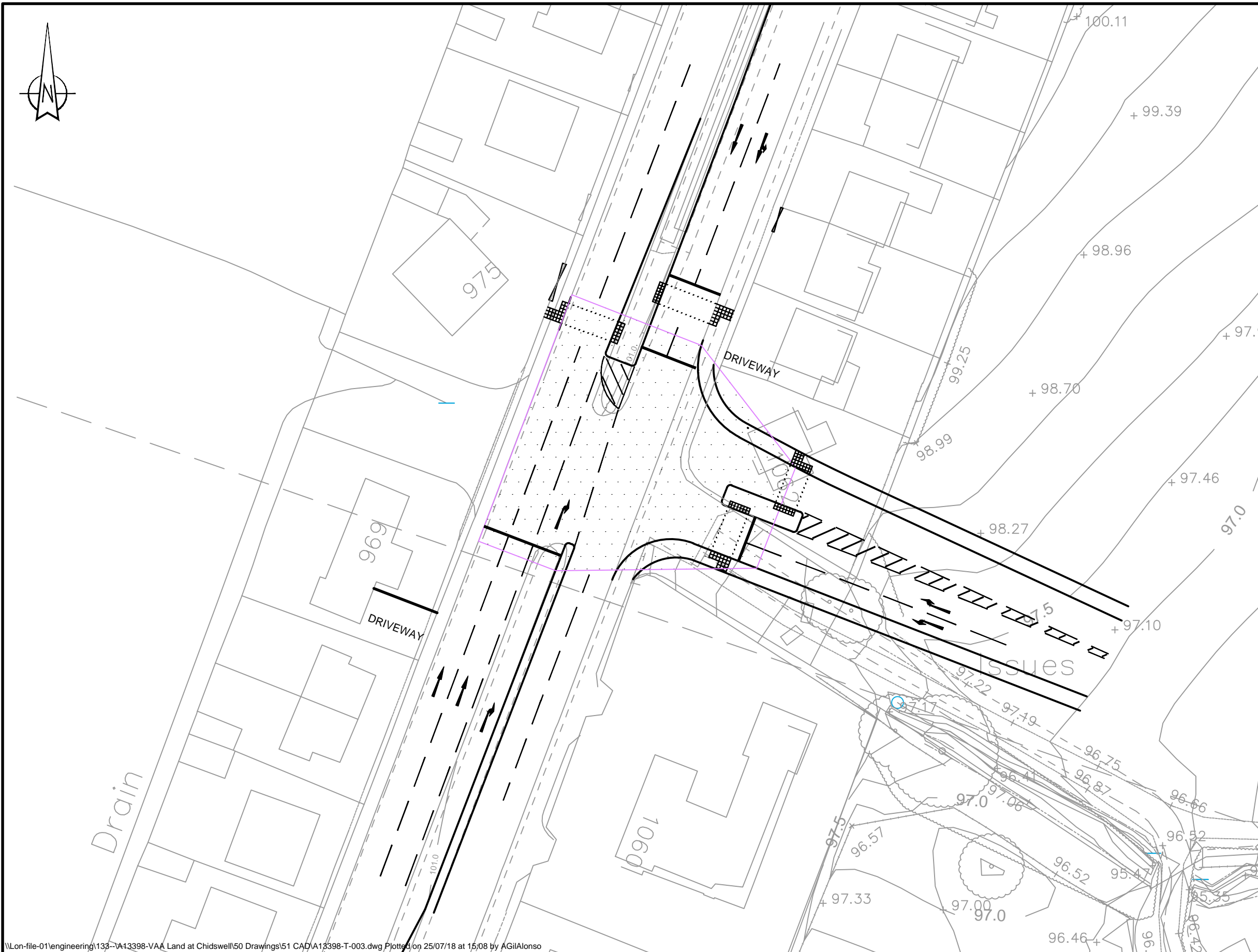
P:\133--VA13398-VAA Land at Chidswell\50 Drawings\51 CADVA13398-T-002-RevA.dwg Plotted on 21/11/19 at 10:35 by cosowski

<h1>Pell Frischmann</h1> <p>5 MANCHESTER SQUARE LONDON W1U 3PD</p> <p>Telephone +44 (0)20 7486 3661 Email: pflondon@pellfrischmann.com www.pellfrischmann.com</p>	Project	CC Projects / Church Commissioners for England Land at Chidswell, Dewsbury			Scale	1:500 @ A3	
	Drawing Title	Proposed Site Access - 39 Heybeck Lane			Drawn	CJO	21/11/2019
				Designed	CJO	21/11/2019	File No. A13398-T-002-RevA.dwg
				Checked	SME	21/11/2019	Drawing Status
				Approved	SME	21/11/2019	DRAFT
				Drawing No.	A13398-T-002		Revision
							A



NOTE:
 1. Drawing based on SBA/WYG drawing no. A079758-A-3, revision B, dated 30.06.15
 2. Drawing based on Ordnance Survey base mapping and Topographical Survey information received 17.09.13

 - Junction Intervisibility Zone



\\Lon-file-01\engineering\133--VA13398-VAA Land at Chidswell\50 Drawings\51 CAD\A13398-T-003.dwg Plotted on 25/07/18 at 15:08 by AGilAlonso

Pell Frischmann

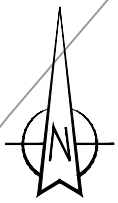
5 MANCHESTER SQUARE LONDON W1U 3PD

Telephone +44 (0)20 7486 3661
 Email: pflondon@pellfrischmann.com
 www.pellfrischmann.com


Project **CC Projects / Church Commissioners for England
 Land at Chidswell, Dewsbury**

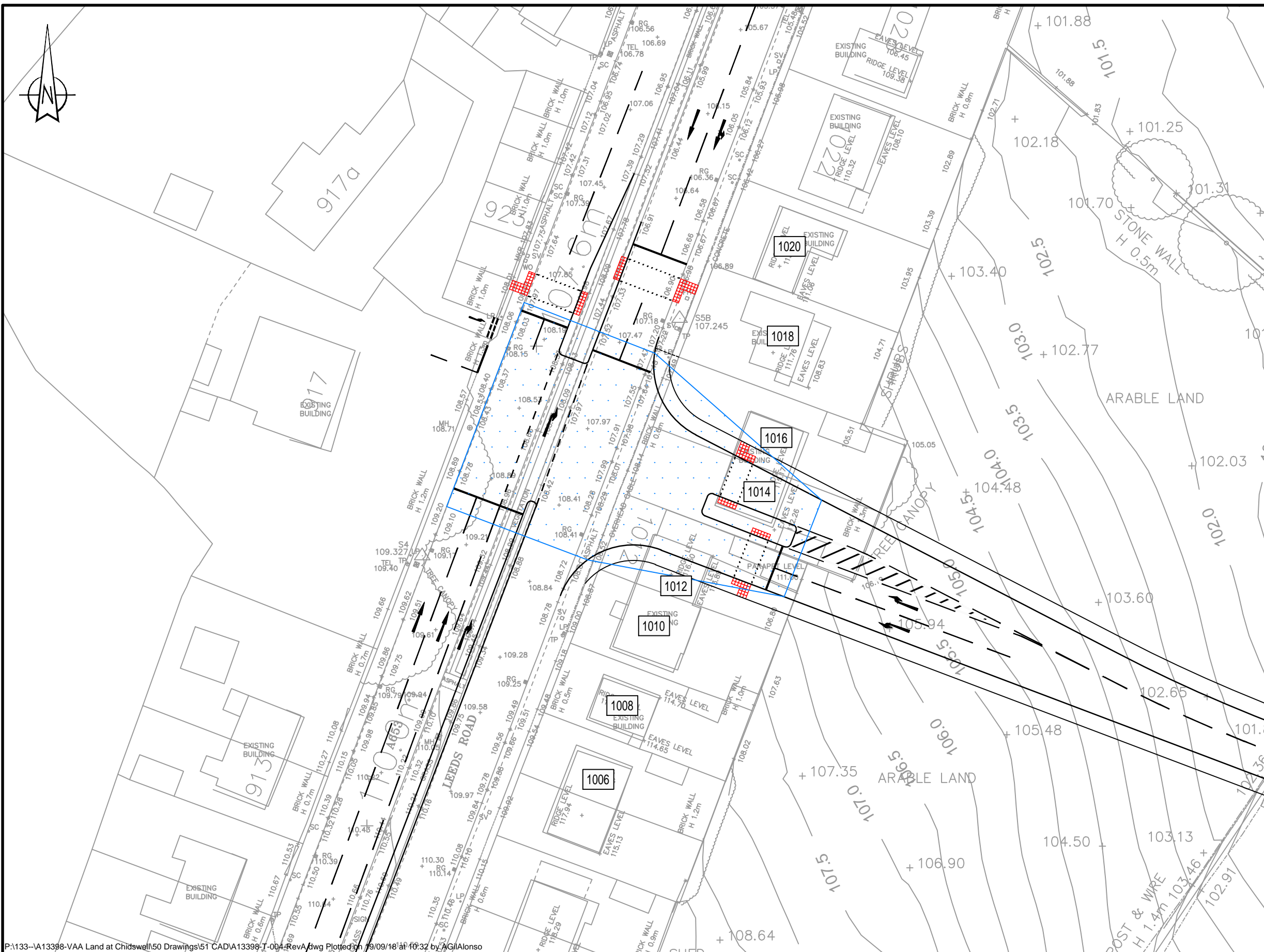
Drawing Title **Proposed Site Access - 1062 Leeds Road**

	Name	Date	Scale	1:500 @ A3
Drawn	AGA	25/07/18	File No.	A13398-T-003.dwg
Designed	AGA	25/07/18		
Checked	SME	25/07/18	Drawing Status	DRAFT
Approved	SME	25/07/18		
Drawing No.			A13398-T-003	
			Revision	



NOTE:
 1. Drawing based on SBA/WYG drawing no. A079758-A-14, dated 18.12.13
 2. Drawing based on Ordnance Survey base mapping and Topographical Survey information received 17.09.13

 Junction Intervisibility Zone



P:\133-V\13398-VAA Land at Chidswell\50 Drawings\51 CADA\13398-T-004-RevA.dwg Plotted on 19/09/18 at 10:32 by AGAlonso

Pell Frischmann
 5 MANCHESTER SQUARE LONDON W1U 3PD
 Telephone +44 (0)20 7486 3661
 Email: pflondon@pellfrischmann.com
 www.pellfrischmann.com

Project	CC Projects / Church Commissioners for England Land at Chidswell, Dewsbury
Drawing Title	Proposed Site Access - 1010 - 1016 Leeds Road

Name	AGA	Date	19/09/18	Scale	1:500 @ A3
Drawn	AGA	19/09/18		File No.	A13398-T-004-RevA.dwg
Designed	AGA	19/09/18		Drawing Status	
Checked	SME	19/09/18			
Approved	SME	19/09/18			
Drawing No.	A13398-T-004			Revision	A



NOTE:

1. Drawing based on SBA/WYG drawing no. A079758-A-9, Revision B dated 03.10.13
2. Drawing based on Ordnance Survey base mapping and Topographical Survey information received 17.09.13

KEY:

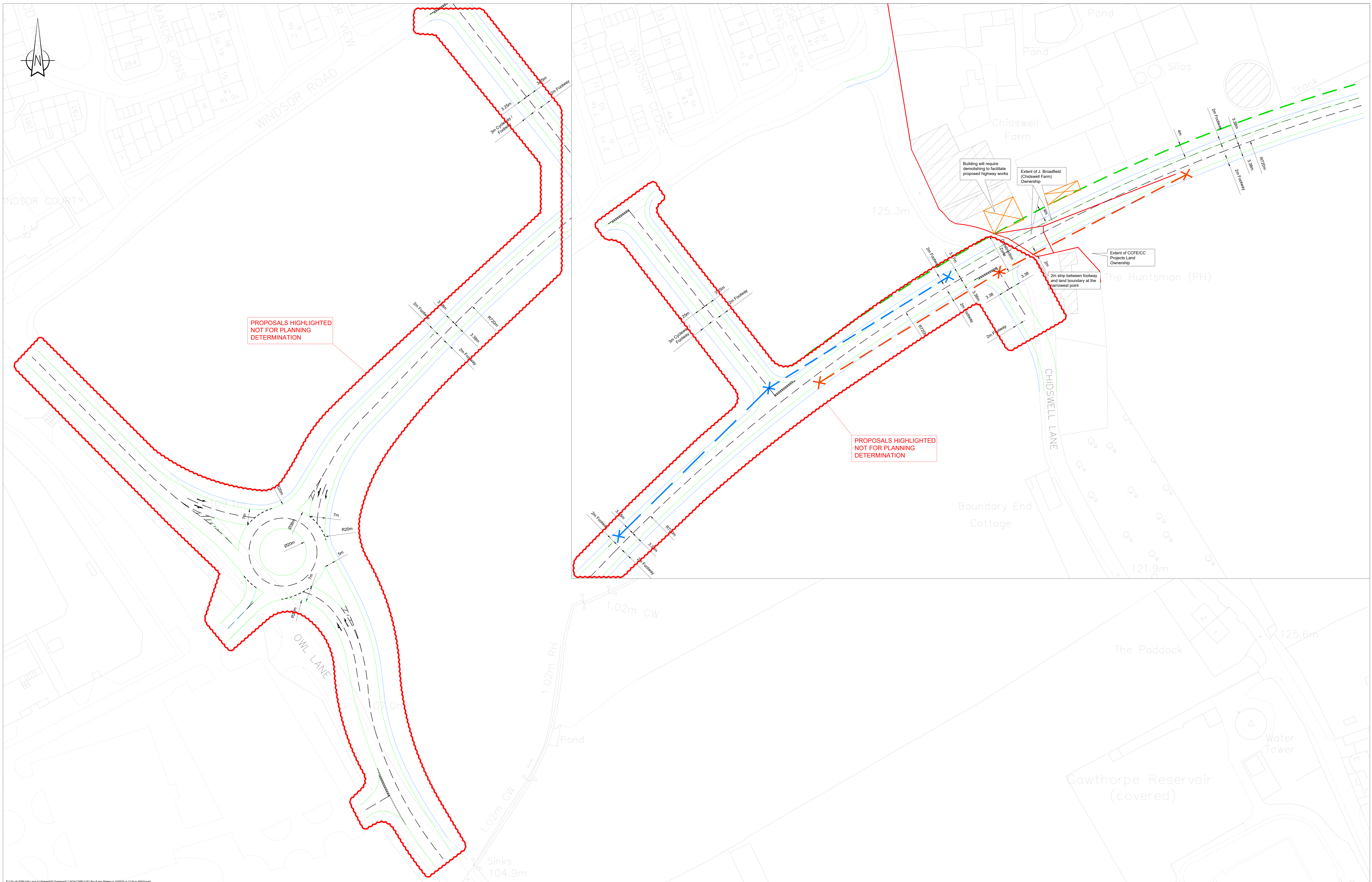
- Visibility splay 2,4m x 40,0m for 30mph road in accordance with Manual for Streets
- Visibility splay 2,4m x 70,0m for 30mph roads in accordance with Design Manual for Roads and Bridges (DMRB) Volume 6

P:\133-VA13398-VAA Land at Chidswell\50 Drawings\51 CADA\13398-T-005-RevA.dwg Plotted on 21/11/19 at 10:34 by cosowski

Pell Frischmann
 5 MANCHESTER SQUARE LONDON W1U 3PD
 Telephone +44 (0)20 7486 3661
 Email: pflondon@pellfrischmann.com
 www.pellfrischmann.com

Project	CC Projects / Church Commissioners for England Land at Chidswell, Dewsbury	
Drawing Title	Proposed Site Access - 97 Chidswell Lane	

Drawn	CJO	21/11/2019	Scale	1:500 @ A3
Designed	CJO	21/11/2019	File No.	A13398-T-005-RevA.dwg
Checked	SME	21/11/2019	Drawing Status	DRAFT
Approved	SME	21/11/2019	Drawing No.	A13398-T-005
				Revision
				A



PROPOSALS HIGHLIGHTED NOT FOR PLANNING DETERMINATION

PROPOSALS HIGHLIGHTED NOT FOR PLANNING DETERMINATION

REVISIONS					
REV	DESCRIPTION	DRN	CHK	APP	DATE
A	Alternative access adjacent to boundary end and cottage	ZB	TML		Jan 2020
B	Area of Planning Determination added	NM	SE		May 2020

NOTES:

GENERAL:

- Do not scale from drawing.
- All dimensions are in metres, unless stated otherwise.
- This drawing to be read in conjunction with other contract drawings.
- This drawing to be read in conjunction with other contract drawings.

DISCLAIMERS:

The information contained in this drawing is based on a combination of OS and survey data provided by others and Pell Frischmann shall not be liable for any inaccuracies or deficiencies.

Land taken from historic information, limits to be confirmed once topographical survey is obtained.

KEY:	
	4.5 x 90m VISIBILITY SPLAY
	2.4 x 90m VISIBILITY SPLAY
	LAND OWNERSHIP BOUNDARY
	4m BUFFER STRIP / CONSTRUCTION ZONE
	BUILDING WILL REQUIRE DEMOLISHING

DESIGN SPEED: 40mph (70KPH)

STOP SIGHT DISTANCE (TABLE 3 TD 9/93):

- DESIRABLE MINIMUM - 120m
- ONE STEP BELOW - 90m

HORIZONTAL CURVATURE (TABLE 3 TD 9/93):

- MINIMUM 1020m RADIUS WITHOUT ELIMINATION OF ADVERSE CAMBER AND TRANSITIONS
- MINIMUM 220m RADIUS WITH SUPERELEVATION OF 2.5%
- MINIMUM 510m RADIUS WITH SUPERELEVATION OF 3.5%
- MINIMUM 360m RADIUS WITH SUPERELEVATION OF 5%
- MINIMUM 255m RADIUS ONE STEP BELOW DESIRABLE MINIMUM R WITH SUPERELEVATION OF 7%
- MINIMUM 180m RADIUS TWO STEPS BELOW DESIRABLE MINIMUM RADIUS WITH SUPERELEVATION OF 7%

Architect/Client/Contractor		Date	
C.C. Projects		AGA	04/04/18
Pell Frischmann		AGL	04/04/18
5 MANCHESTER SQUARE LONDON W1U 3PD		SME	04/04/18
Telephone +44 (0)20 7486 3661		POB	04/04/18
Email: pflondon@pellfrischmann.com		For Planning Determination (Except areas highlighted)	
www.pellfrischmann.com		File No.	Scale
Project		A13398-T-001 Rev B.dwg	1:500 @ A0
Drawing Title		Revision	
Chidswell Lane / Owl Lane Access Arrangements		A13398-T-001	B