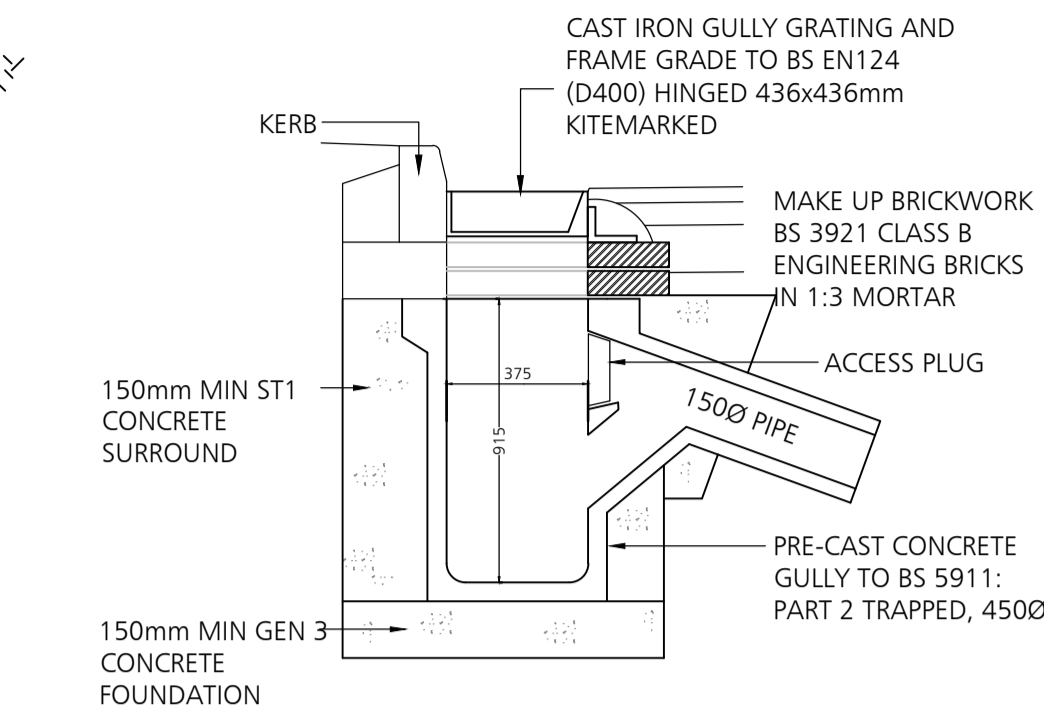
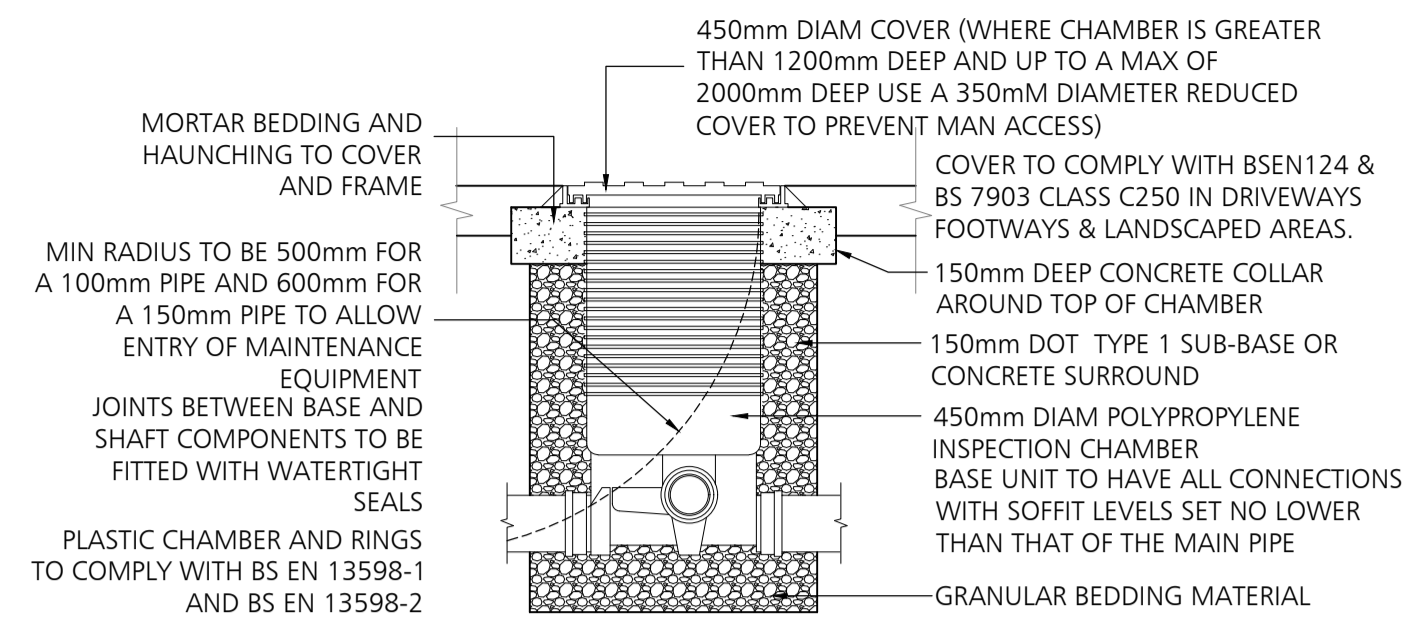


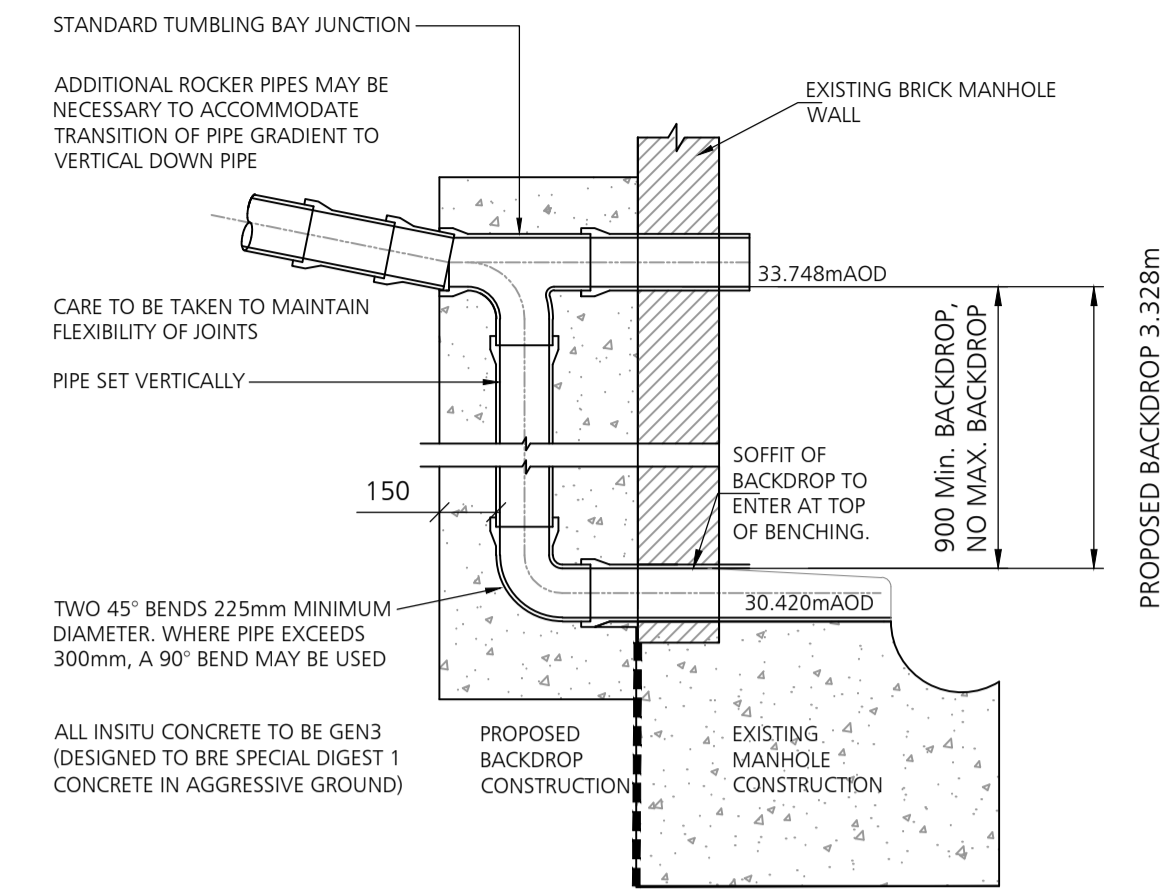
**DRAIN TRENCH EDGE MORE THAN 1M FROM FOOTING/FOUNDATION EDGE PRIVATE DRAINAGE**



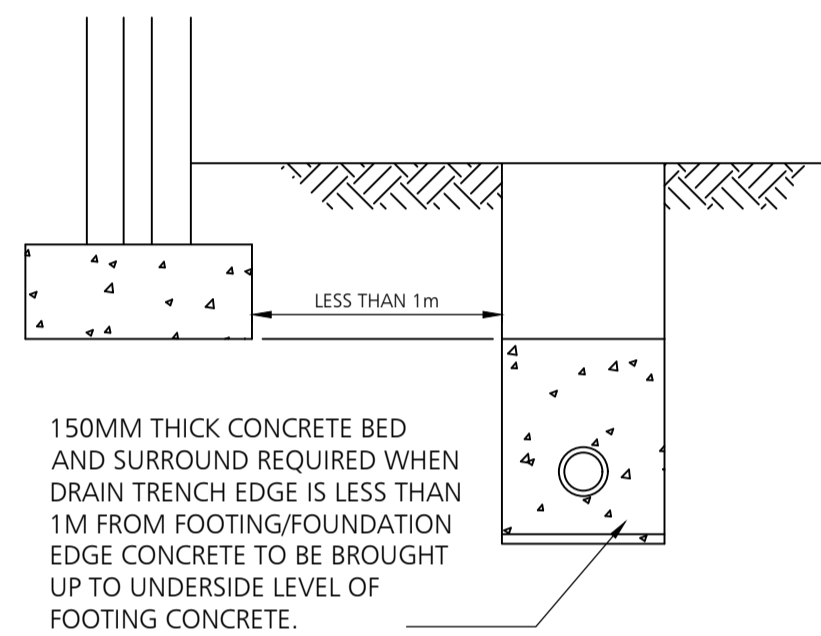
**TYPICAL PRECAST CONCRETE ROAD GULLY DETAIL PRIVATE DRAINAGE**



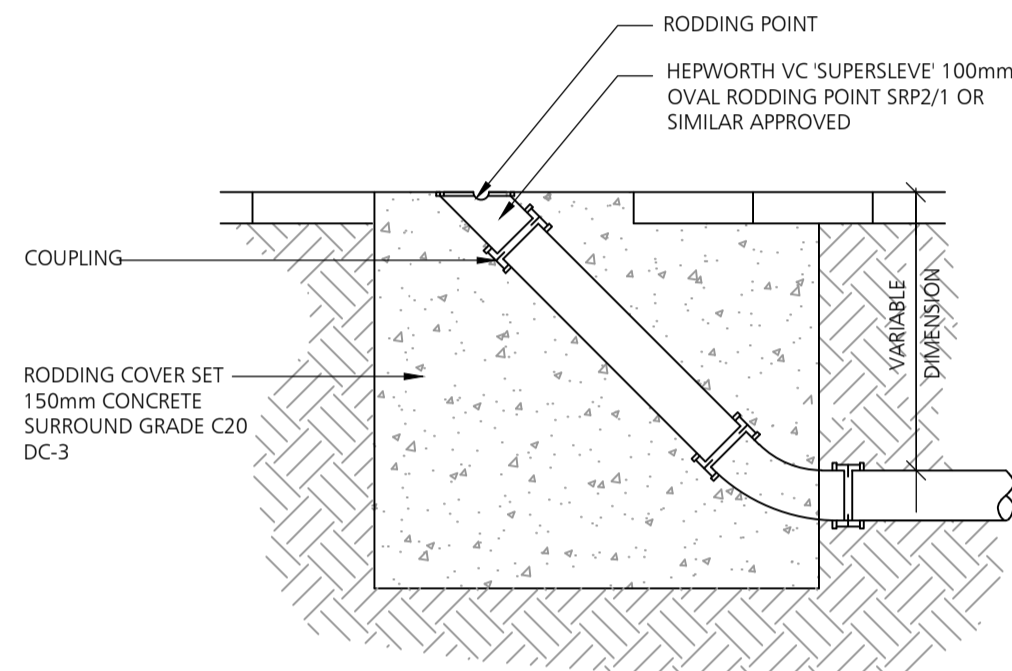
**POLYPROPYLENE INSPECTION CHAMBER (WHERE SITED IN DRIVEWAYS/PAVED AREAS) - MAX 2000 DEPTH PRIVATE DRAINAGE**



**VERTICAL BACKDROP DETAIL TO EXISTING BRICK MANHOLE**

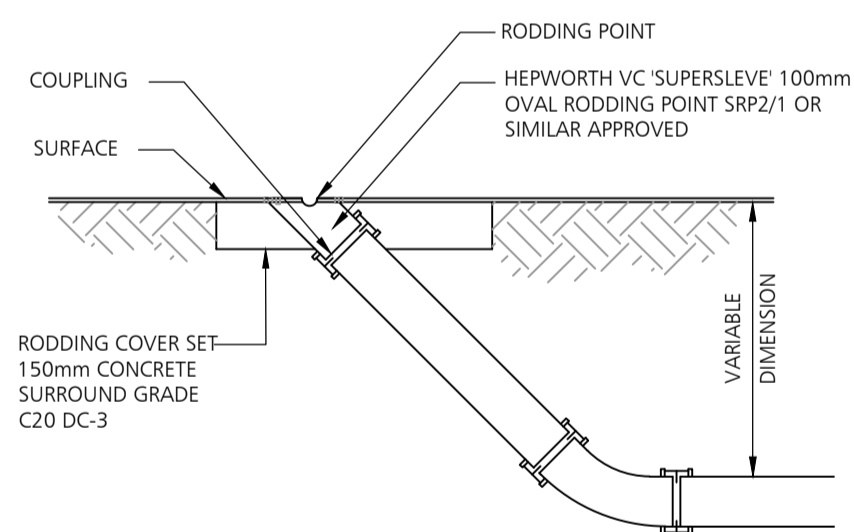


**DRAIN TRENCH EDGE LESS THAN 1M FROM FOOTING/FOUNDATION EDGE PRIVATE DRAINAGE**

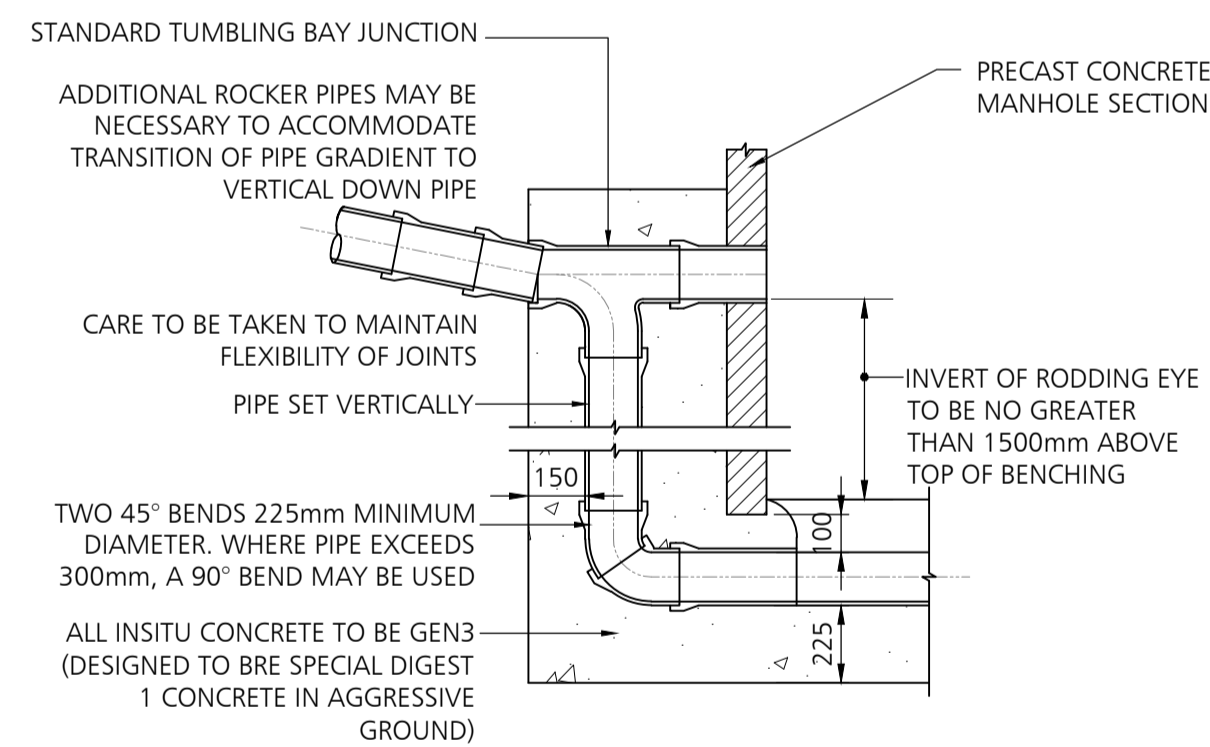


**RODDING EYE IN CARRIAGEWAY/HARD LANDSCAPE PRIVATE DRAINAGE**

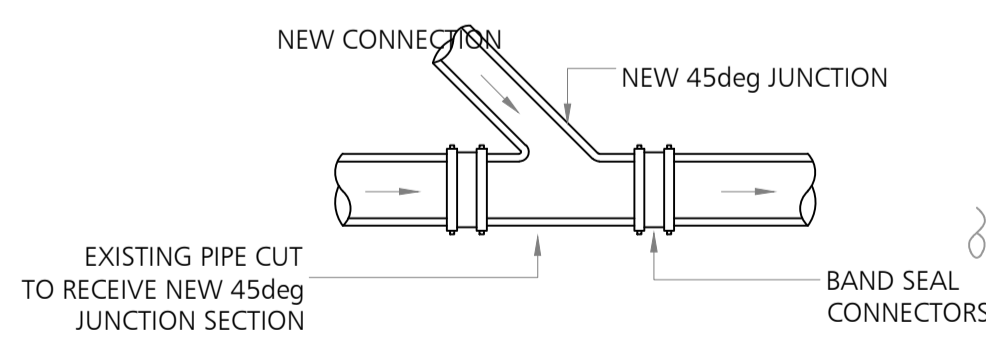
CONCRETE BED AND SURROUND TO BE DISCONTINUED AT EVERY PIPE JOINT (NOT TO EXCEED 5M) USING COMPRESSIBLE FILLER COMPRESSIBLE FILLER TO BE 18MM THICK FOR PIPEWORK UPTO 450MM DIAMETER FOR PIPES OVER 450MM FLEXCELL JOINTS TO BE 36MM THICK



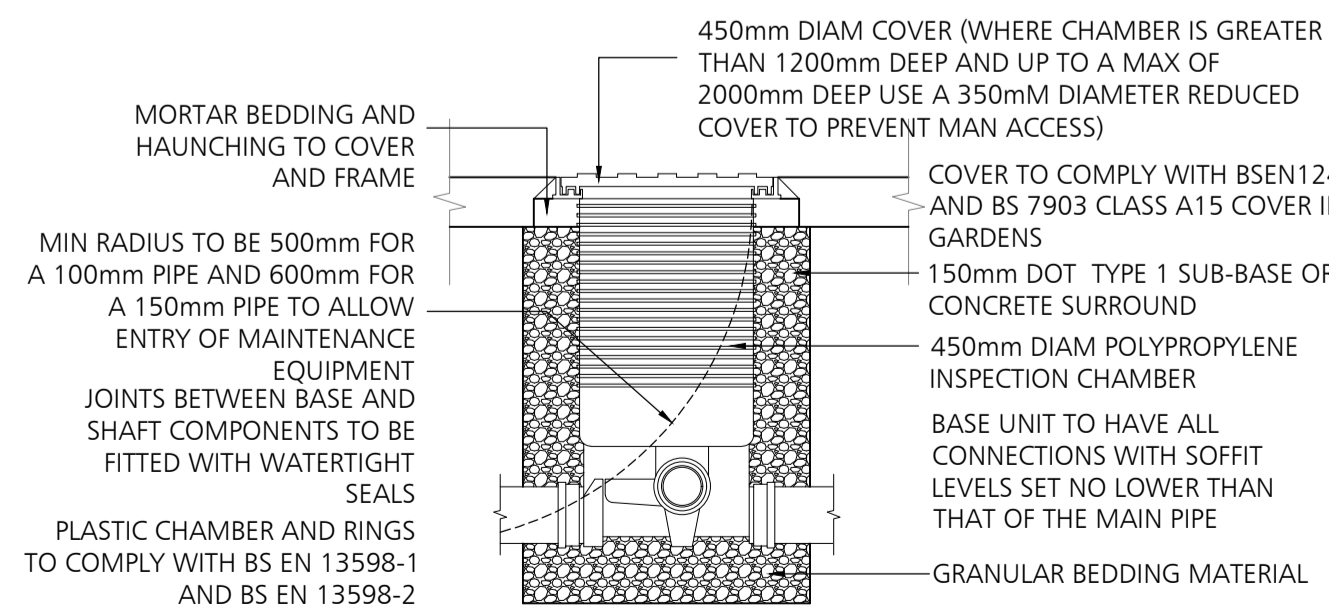
**RODDING EYE IN LANDSCAPE PRIVATE DRAINAGE**



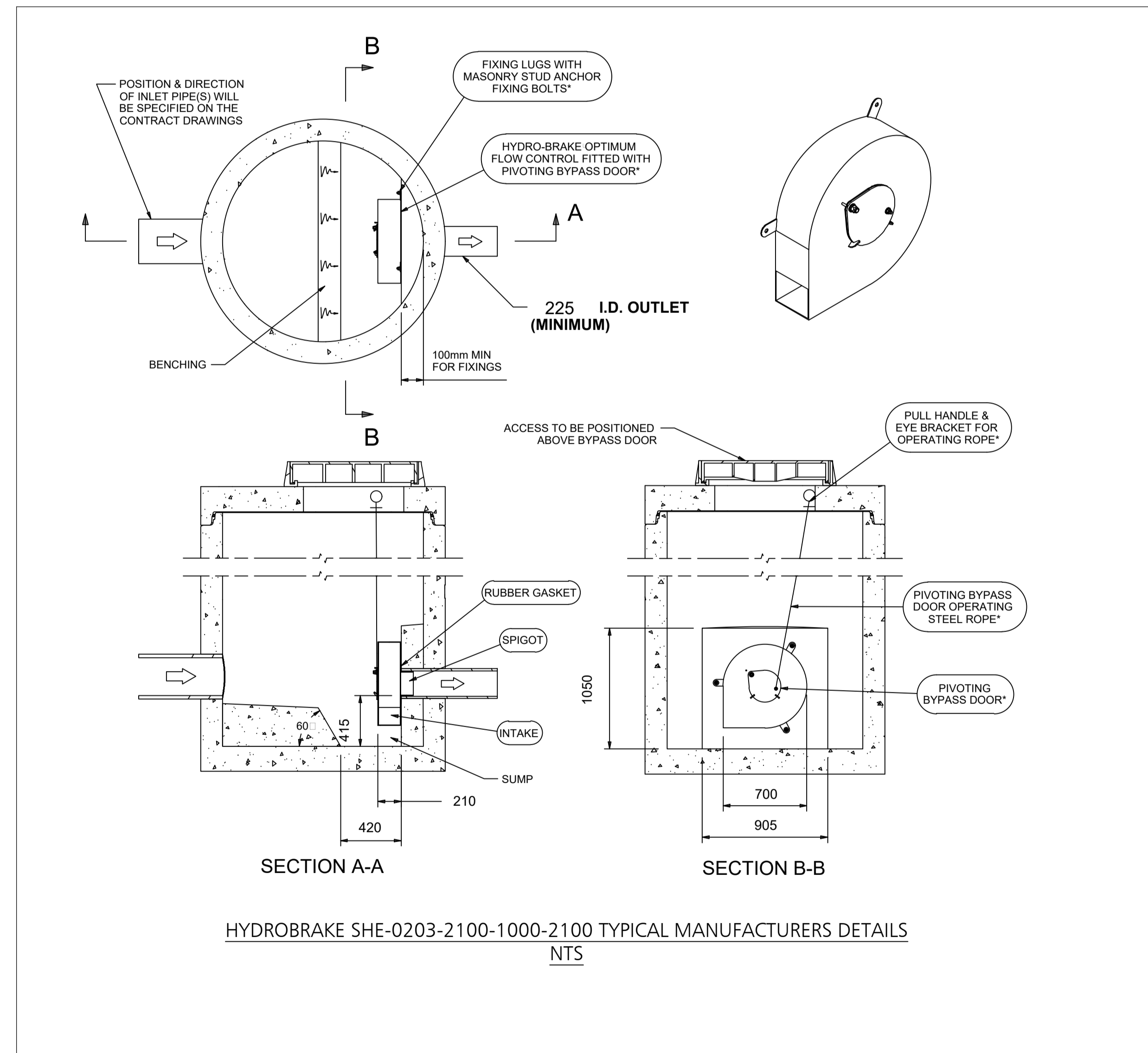
**TYPICAL EXTERNAL VERTICAL BACKDROP DETAIL PRIVATE DRAINAGE**



**BRANCH INSERTION DETAIL PRIVATE DRAINAGE**



**POLYPROPYLENE INSPECTION CHAMBER (WHERE SITED IN GARDENS) - MAX 2000 DEPTH PRIVATE DRAINAGE**



**HYDROBRAKE SHE-0203-2100-1000-2100 TYPICAL MANUFACTURERS DETAILS NTS**

**DO NOT SCALE**

**DESIGNERS HAZARD IDENTIFICATION**  
IT IS ASSUMED THAT ALL WORKS WILL BE UNDERTAKEN BY A COMPETENT CONTRACTOR WORKING, WHERE APPROPRIATE, TO AN APPROVED METHOD STATEMENT. IN ADDITION TO THE HAZARDS TYPICALLY ASSOCIATED WITH THE TYPES OF CONSTRUCTION DETAILED ON THIS DRAWING, ANY KNOWN ABNORMAL HAZARDS SPECIFIC TO THIS DRAWING HAVE BEEN IDENTIFIED.



1. FOR GENERAL DRAINAGE NOTES REFER TO DRAWING 19383-110

Date	07.08.20	Revision	PRELIMINARY ISSUE	By	HB	AMW	P1
------	----------	----------	-------------------	----	----	-----	----

**dudleys** Tith House  
35 Town Street  
Leeds  
LS18 5LJ  
Structural & Civil Consultants T:0113 258 3611  
E:info@dudleys.co.uk

Project  
**SUPPORTED LIVING RESIDENTIAL DEVELOPMENT MIRFIELD, WF14 8AZ**  
Title  
**DRAINAGE DETAILS SHEET 2 OF 2**

Scale	SHOWN	Paper	A1	Drawn	HB	Check	AMW
Date	JULY '20	Status	PRELIMINARY	Job No.	19383	Drng. No.	126
Rev.	P1						