

MMR  
CONSTRUCTION LTD.

# WHEELWRIGHT CENTRE

## Statement of Community Engagement



# Contents

- 1.0 Historical Engagement.....2
- 2.0 Recent Engagement.....3
- 3.0 Forthcoming Consultation Plans.....4
- 4.0 Indicative Public Consultation Materials.....5

## 1.0 Historical Engagement

The Wheelwright Centre (Part of Kirklees College, AKA. Batley Art School) has been closed since the academic year 2017-2018. Following the schools closure the building had been for sale for approximately 12 months.

In 2019, MMR Construction Ltd. Expressed their interest in the site, seeing the buildings stature they expressed their intentions of rekindling the buildings former glory and importance in the local community. While not a listed building, MMR recognised the buildings importance and historical value and commissioned architectural practice Beckwith Design Associates Ltd to produce a scheme for a conversion to residential units without taking away from the existing character of the building.

Both MMR & BDA sought consultation from Kirklees Council in determining development restrictions and a clear path forward in producing a viable scheme that the council could approved.



## 2.0 Recent Engagement

To increase the notoriety of MMR's plans to develop the Wheelwright Centre, actions were set into motion.

Beckwith Design Associates sought about measures of increasing the local communities knowledge of the proposed development, through;

- Multiple consultations with local planners and councillors
- Media advertisements in the local press & their online counter parts (The Dewsbury Reporter & The Huddersfield Examiner).
- Public Consultations at the proposed development (Wheelwright Centre)

The initial public consultation for the proposed development took place on 18/07/2019, held from midday until 17:00pm. Although the local press had been utilised and the local council made aware of the consultation, no members of the press, local authority or community were present throughout the day. Beckwith Design have taken measures to allow further site viewings and consultation, should any of the local community show interest in the development prior to the submission of the proposed developments planning application.



### 3.0 Forthcoming Consultation Plans

Following the initial public consultation and with the imminent submission of the proposed developments planning application, MMR and BDA have taken measures to allow further site viewings and consultations at the Wheelwright Centre based.

Since the initial public consultation members of the public have shown interest in the development and have requested a viewing of the site, showing particular interest toward the memorial plaques in the buildings foyer.

MMR & BDA will hold further consultations on request, with a full set of proposed; plans, sections and elevations concurrently on display at the development.

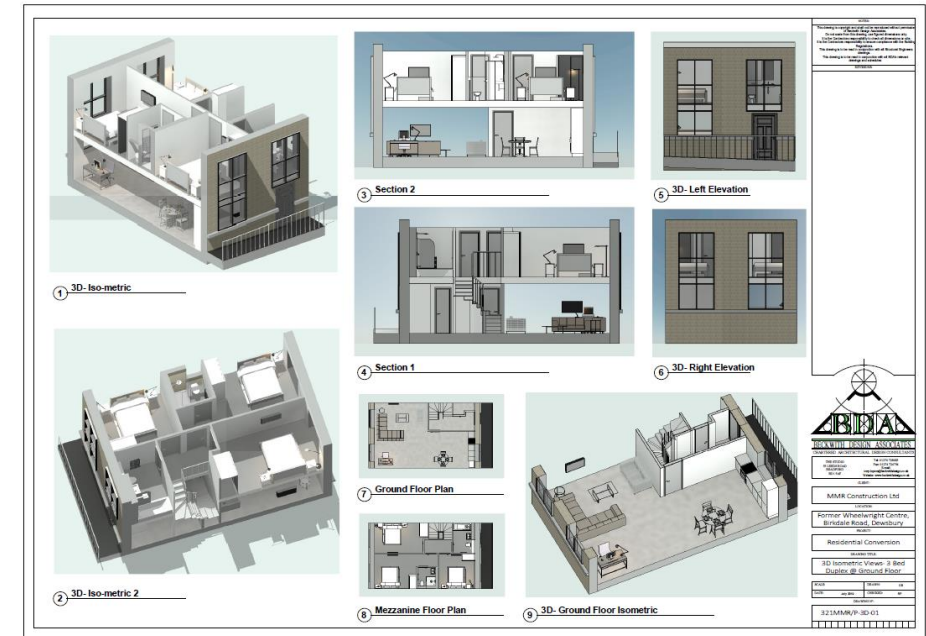


## 4.0 Indicative Public Consultation Materials

Beckwith Design Associates had proposed a full set of proposals for public viewing, including;

- Floor layout plans
- Elevations
- External landscaping plans
- 3D visualisation
- Proposed accommodation schedules (based on the scheme at planning stage).
- Proposal information sheets (background information on the developer & basic proposal information).

While, no persons attended the initial public consultation, all aforementioned documentation has been left on display at the Wheelwright Centre should any further consultation take place.



+ *Document Prepared By:*



The Studio, 53 Leeds Road  
Bradford, West Yorkshire, BD1 5AF

Tel: 01274 728683  
[www.beckwithdesign.co.uk](http://www.beckwithdesign.co.uk)