

SPEN VIEW - DBWS BURY MOOR 06/06/2019.



FOUL MANHOLE
COVER \approx 66.07
1000MM INVERT
DROPS OFF DEEP
SO CONFIDENT
WE CAN CONNECT
MANHOLE
1M INVERT.
COVER
66.07.

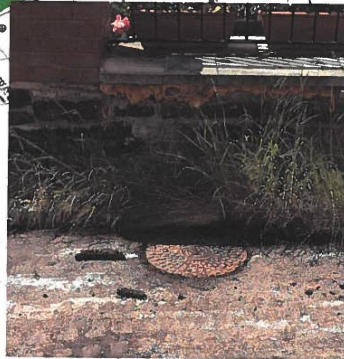
YW
FOUL.

MANHOLE GULLY

ASSUMED



GULLY FOUND
06/06/2019.
SPEN VIEW



SURFACE WATER
MANHOLE FOUND 06/06/2019.
COVER \approx 64.90
DRAINAGE SURVEY TO GIVE
INVERT

SW MANHOLE NEEDS
CLEANING OUT.
TO SURVEY WHERE
IT GOES.

6507

