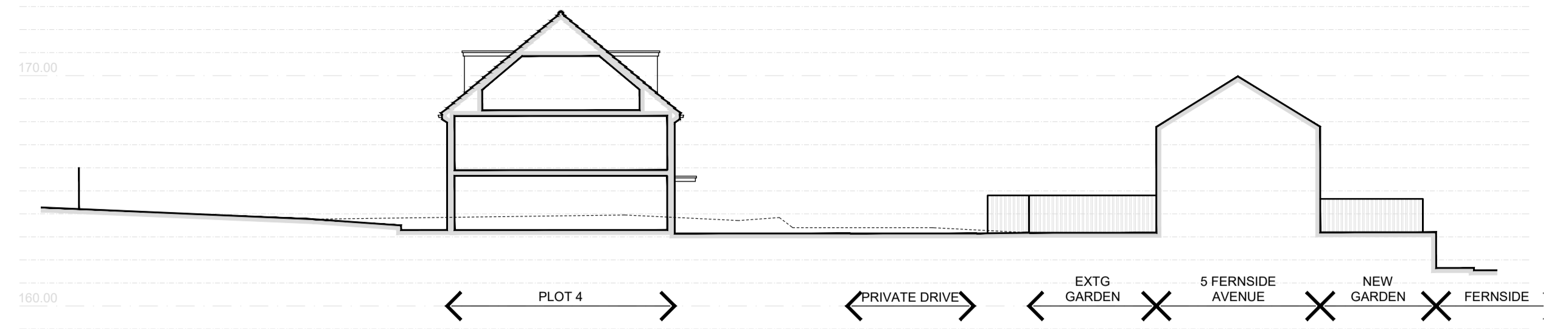
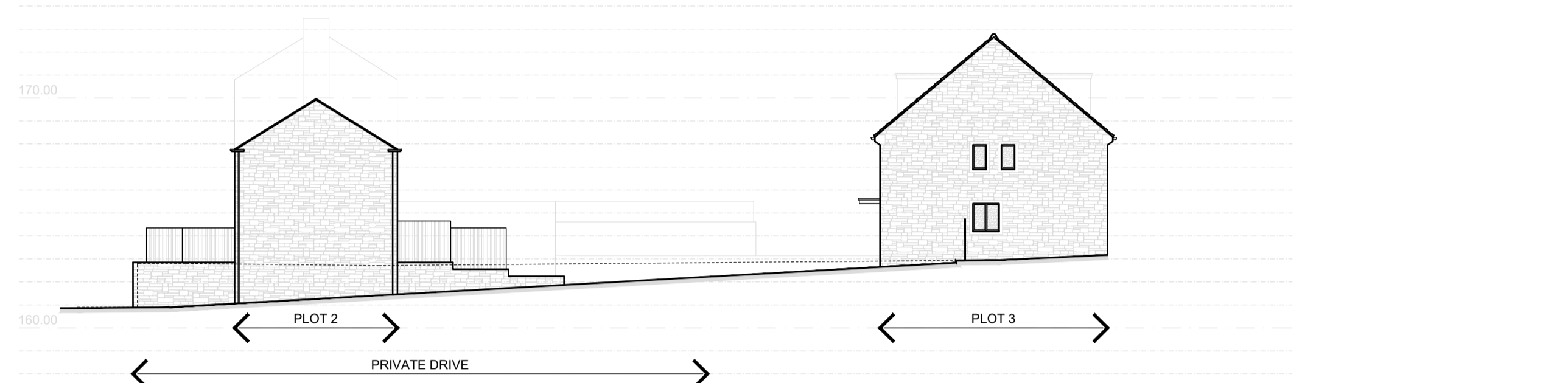




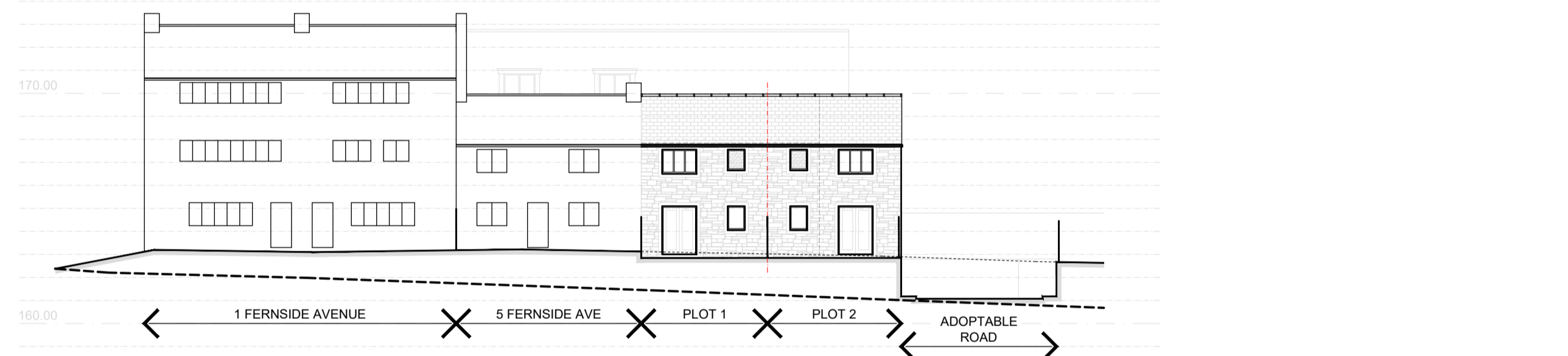
PROPOSED SITE BLOCK PLAN
SCALE 1:200



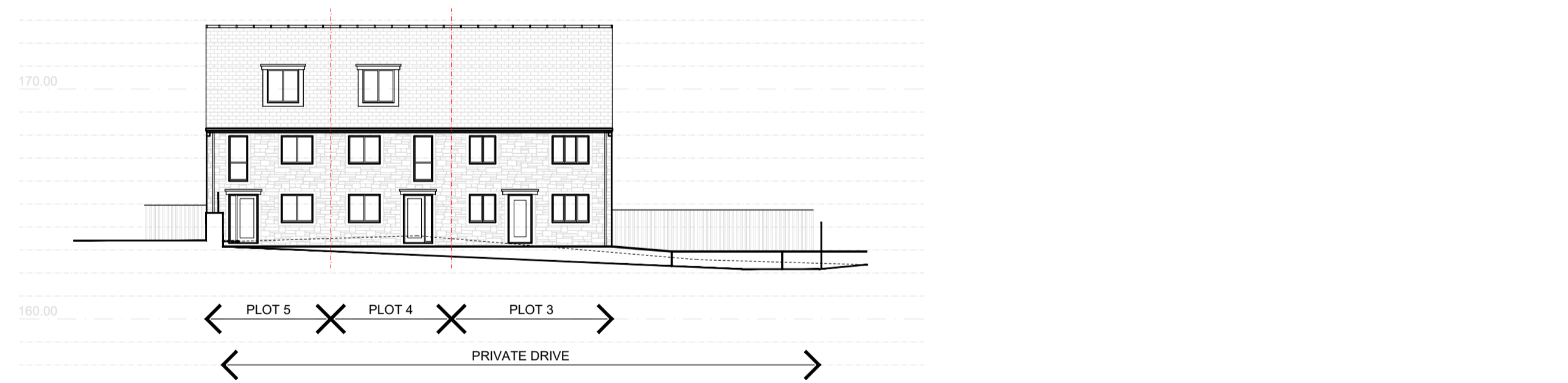
PROPOSED SITE SECTION A-A
SCALE 1:200



PROPOSED SITE SECTION B-B
SCALE 1:200

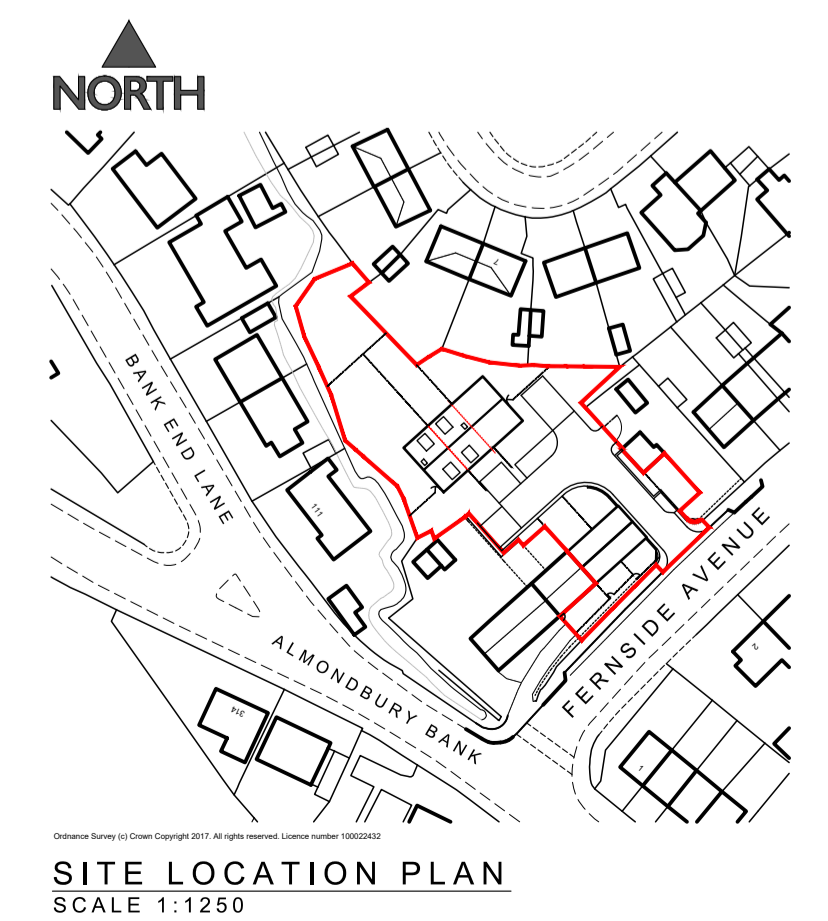


PROPOSED SITE SECTION C-C
SCALE 1:200



PROPOSED SITE SECTION D-D
SCALE 1:200

- KEY**
- TARMAC ADOPTABLE ACCESS ROAD & FOOTWAY TO HIGHWAY ENGINEERS DESIGN
 - CONCRETE BLOCK PAVING TO PRIVATE DRIVE & PARKING AREAS TO HIGHWAY ENGINEERS DESIGN
 - CONCRETE SLAB PAVING
 - GRASS/VEGETATION
 - 1.8M HIGH CONCRETE POST FENCE WITH CLOSE BOARDED TIMBER INFILL & 300MM HIGH CONCRETE GRAVEL BOARD
 - 0.9M HIGH CONCRETE POST FENCE WITH CLOSE BOARDED TIMBER INFILL & 300MM HIGH CONCRETE GRAVEL BOARD
 - PROPOSED FOUL DRAINAGE (INDICATIVE ONLY - TO DRAINAGE ENGINEERS DESIGN)
 - PROPOSED SURFACE WATER DRAINAGE (INDICATIVE ONLY - TO DRAINAGE ENGINEERS DESIGN)
 - 99.05 PROPOSED GROUND/ FLOOR LEVEL
 - 99.44 EXISTING GROUND LEVEL



SITE LOCATION PLAN
SCALE 1:1250

PLANNING APPLICATION			
Rev	Description	Date	By / App'd
NORTHLIGHT ARCHITECTURE LTD			
Client: Connah Construction Ltd			
Project: Housing Developments at - Ferside Avenue, Almondbury			
Drawing title: Proposed Site Block Plan & Site Sections			
Drawn by: CG	Date: Apr '19	App'd: -	
Drawing no: (AL)30	Project no: 17.1002	Scale @ A1: 1:200	Rev: -