

**Key**

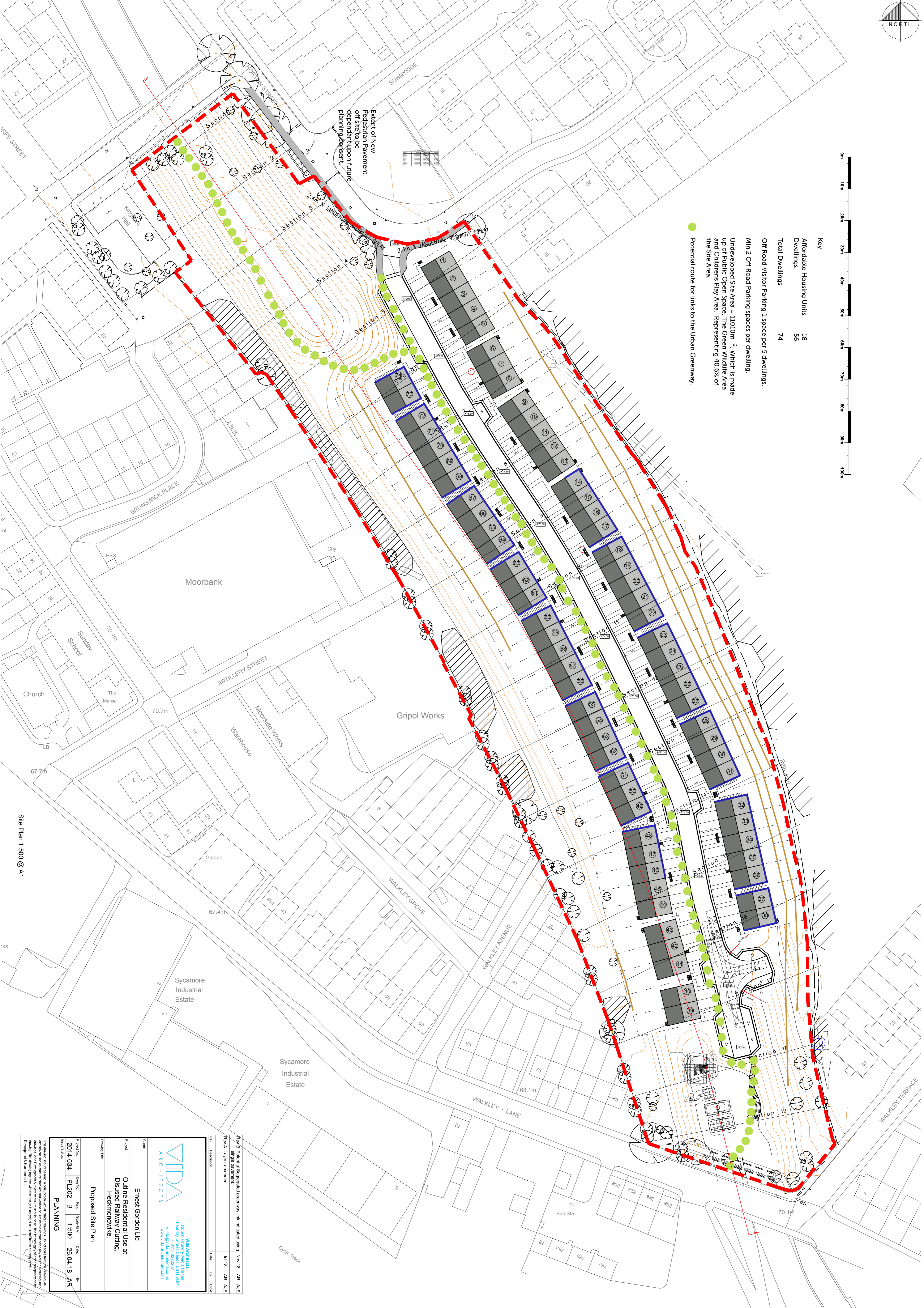
- Affordable Housing Units 18
- Dwellings 56
- Total Dwellings 74

Off Road Visitor Parking 1 space per 5 dwellings.  
 Min 2 Off Road Parking spaces per dwelling.

Undeveloped Site Area = 11010m<sup>2</sup>. Which is made up of Public Open Space, The Green Wildlife Area and Childrens Play Area. Representing 40.6% of the Site Area.

● Potential route for links to the Urban Greenway.

Extent of New Pedestrian Pavement off site to be dependant upon future planning consent.



Site Plan 1:500 @ A1

<p><b>Vida Architects</b>          Richard Fildes Architects Ltd          100, The Quadrant, Brighton, BN1 1UG          T: 01323 827287          E: info@vida-architects.co.uk          www.vida-architects.com</p>		<p><b>Ernest Gordon Ltd</b>          Outline Residential Use at          Disused Railway Cutting,          Heckmondwike.</p>	
<p><b>Proposed Site Plan</b></p>		<p><b>PLANNING</b></p>	
Project No.	2014-034	Drawn By	PL202 B
Scale @ A1	1:500	Date	26.04.18
Drawn By	ARF	Checked By	ARF
Drawn Date	Jul 18	Checked Date	ARF
Drawn By	ARF	Checked By	ARF
Drawn Date	ARF	Checked Date	ARF

Rev B: Potential Staggered greenway link indicated using single pavement.  
 Rev A: Layout amended.

This drawing should be read in conjunction with all related drawings. Do not scale from this drawing. All dimensions are given in millimetres and are to be used as a guide only. The drawing is the property of Vida Architects & Ernest Gordon Ltd. The drawing is the property of Ernest Gordon Ltd. The drawing is the property of Ernest Gordon Ltd. The drawing is the property of Ernest Gordon Ltd.