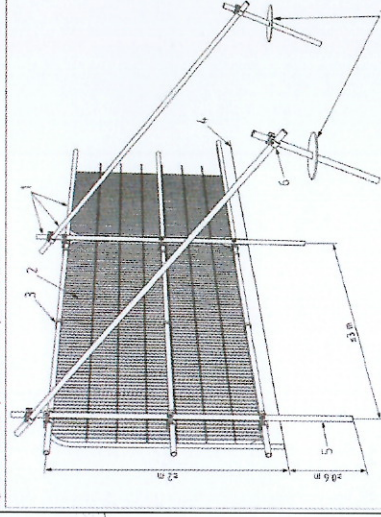


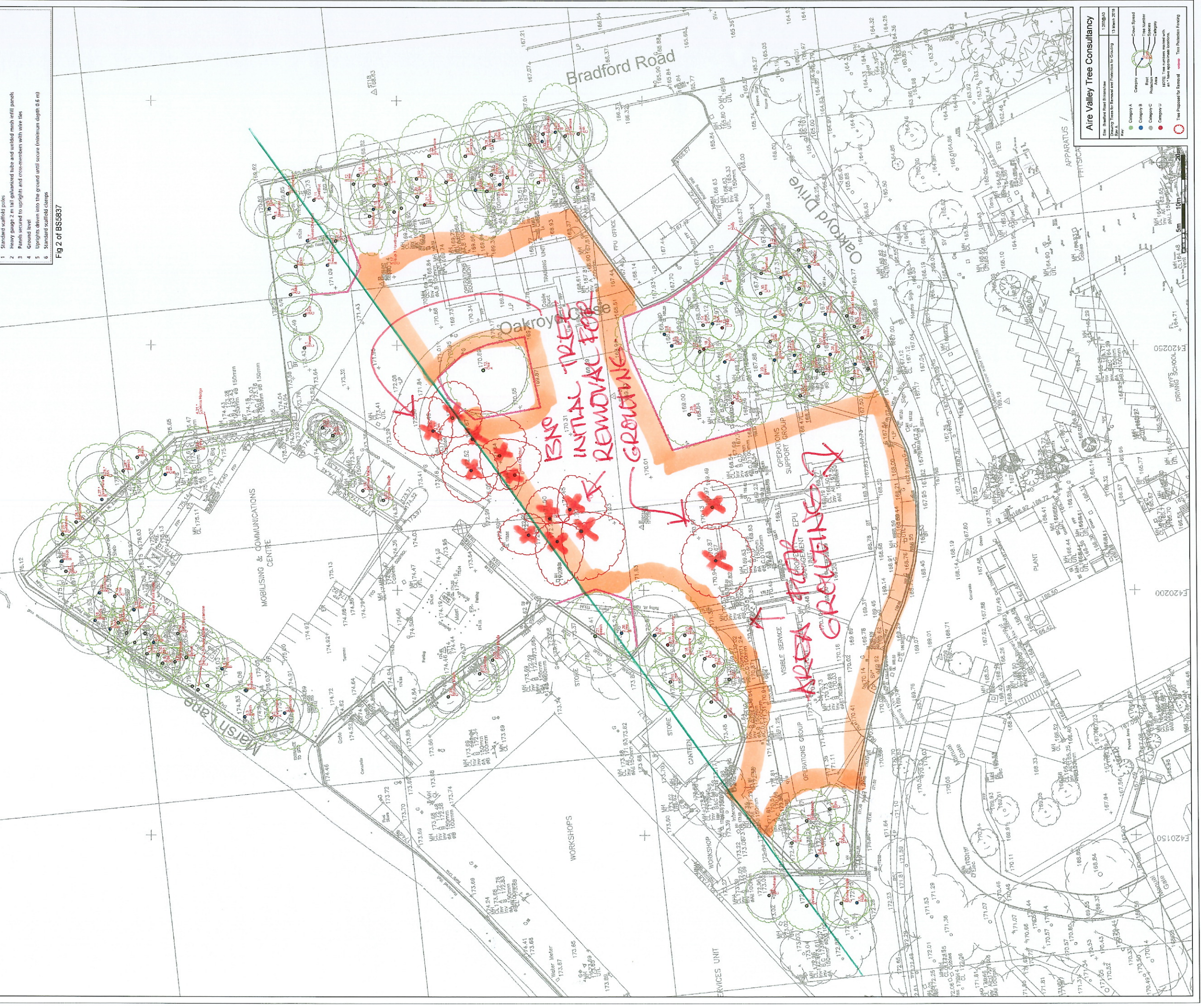
INITIAL TREE REMOVAL FOR GROUTINGS

Figure 2 Default specification for protective barrier



- 1 Standard scaffold poles
- 2 Heavy gauge 2 m tall galvanized tube and welded mesh infill panels
- 3 Panels secured to uprights and crossmembers with wire ties
- 4 Ground level
- 5 Uprights driven into the ground until secure (minimum depth 0.6 m)
- 6 Standard scaffold clamps

Fig 2 of BS5837



**Aire Valley Tree Consultancy**

Site: Bradford Road Birmingham  
Drawing: Trees for Removal and Protection for Groouting  
Date: 13 March 2019

**Key**

- Category A
- Category B
- Category C
- Category D
- Category E

Tree Number  
Tree Category  
Tree Status  
Tree to be removed with an appropriate location  
Tree Proposed for Removal  
Tree Protection Fencing