

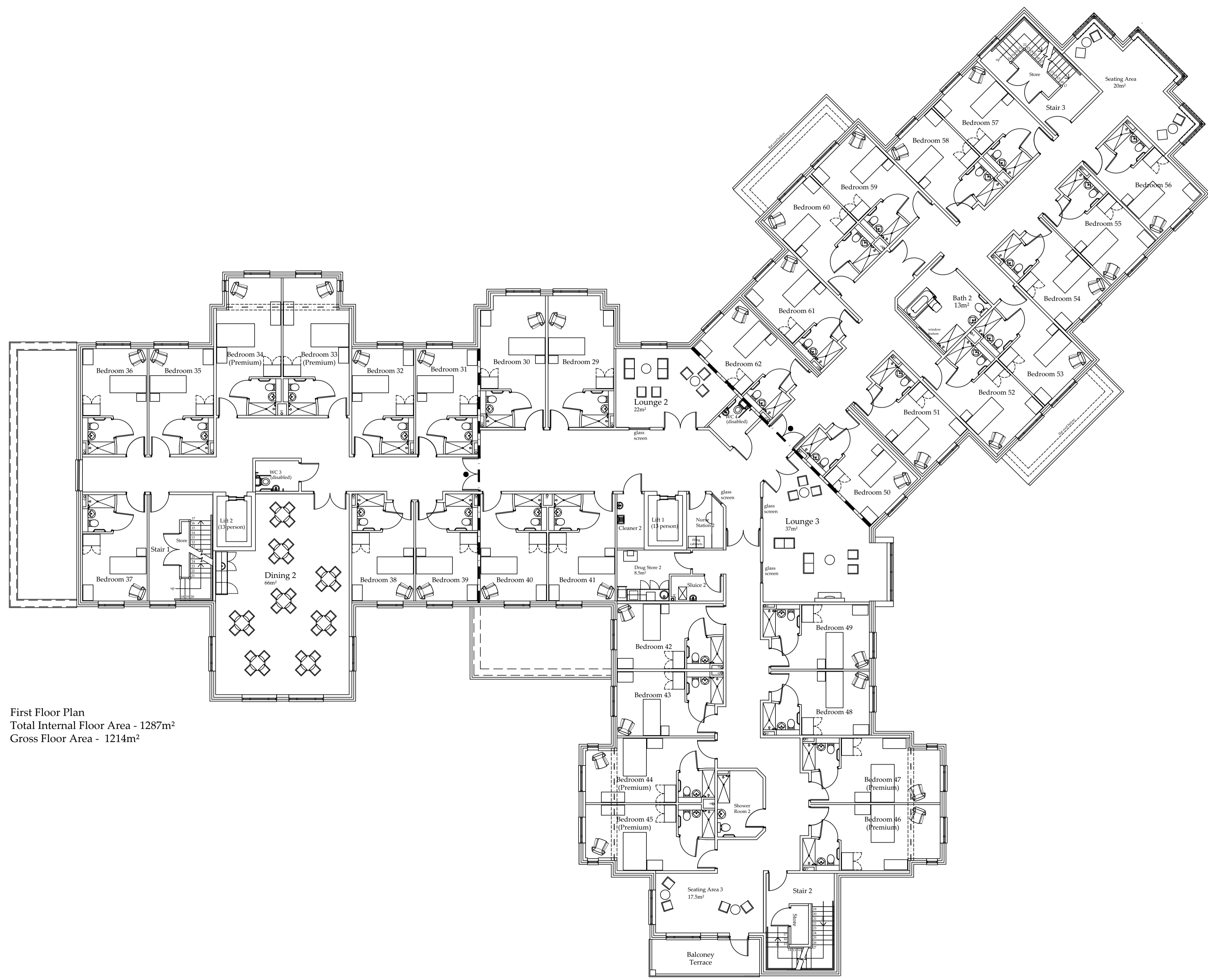
Design Criteria

Site to comply with the following design criteria subject to confirmation of the form of construction and assessment by an external accredited assessor.

- Design and Quality Standards: (NA)
- Code for Sustainable Homes Level: (NA)
- BREEM Rating: (NA)
- Lifetime Homes: (No)
- Building For Life Minimum Score: (NA)
- Secured by Design: (NA)

Revisions:

Rev. Note	Date	By/Chk
A	10.08.17	KP
Roof terrace reduced in area.		
B	13.08.17	KP
Roof terrace removed.		



Accommodation Schedule

Dining 2 - 66m²
 Lounge 2 - 22m²
 Lounge 3 - 37m²
 Total Lounge / Dining area - 125m²

Seating Area 3 - 17.5m²
 Seating Area 4 - 20m²

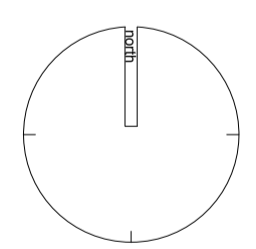
34 Single Bedrooms with Ensuites

- 2 Lifts (2 x 13 person)
- 1 Bathroom
- 1 Shower Room
- 2 Disabled WC
- 1 Drug Store
- 1 Sluice
- Nurse Station
- Cleaner's Store
- Stores

Key

- Line of 1 hr fire barrier
- - - Beam over
- rwp Rain water pipe
- big Back inlet gully
- sp Soil pipe
- ss Stub stack
- Fire rated FD60S
- Fire Alarm Panel

First Floor Plan
 Total Internal Floor Area - 1287m²
 Gross Floor Area - 1214m²



DARRINGTON HEALTH CARE LTD	
Drawing Status	
<input type="checkbox"/> preliminary	<input checked="" type="checkbox"/> planning
<input type="checkbox"/> information	<input type="checkbox"/> tender
<input type="checkbox"/> comment	<input type="checkbox"/> construction
<input type="checkbox"/> approval	<input type="checkbox"/> records/built
Scale	1:100 @ a1
Date	April 2017
Drawn/Checked	kpliam
Dwg No	NE-2106-03-01-AC-012B

**Level 2 Plan
 as Proposed**
 Serpentine Road, Cleckheaton
 Darrington Healthcare

