



Habitat boxes (003) x 3

To be incorporated into wall structure, located under the eaves/ soffit boxing at least 3m above ground.



9A Schwegler House Martin Nests x 2

Site under eaves on external walls of building at least 3m above ground. Backing board can be painted to match soffit boxing or similar. Also suitable for Swallows. Avoid placing above windows or doors.



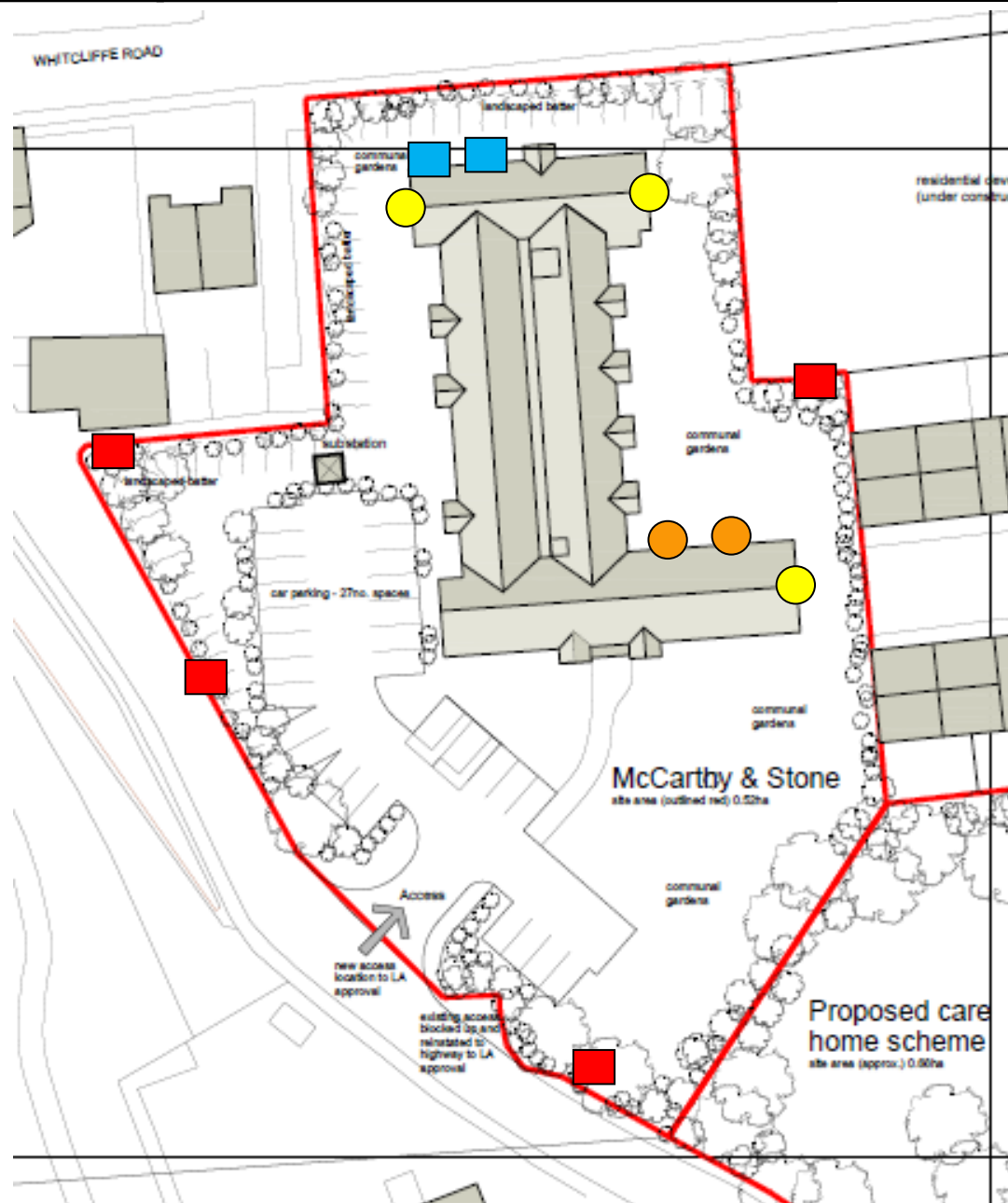
Bee and Bug Biome x 4

Attractive to ladybirds, earwigs and lacewings. Place within shrubby areas or on fence posts with climbers.



1SP Schwegler Sparrow Terrace x 2

To be built into the masonry of the wall at least 3m above ground located under eaves or soffit boxing, avoid placing above windows or doors.



Controlled Lighting

Recommended reduced lighting/ darkness zone where bat and bird boxes are present.

Use of light restriction measures throughout site where suitable:

- Darkness hours through switching off lighting when not required (i.e. 23:00 to 05:30 Variable Lighting Scheme)
- Use of PIR timers activated by large objects (not bats)
- Cowling of slight sources/ directional lighting
- Use of Narrow Spectrum Lights with no UV content, Low pressure sodium and warm white LED.
- No lighting to be directed towards bat or bird box locations.

Biodiversity Plan:

Serpentine Road, Cleckheaton, West Yorkshire, BD19 3HU

T.0330 380 1036

E: planningES@uk.innovation-group.com

Unit 4 Linnet Court, Cawledge Business Park, Alnwick, NE66 2GD



The aim of the bat and bird box plan is to ensure that mitigation and enhancement is appropriate based on previously undertaken protected species surveys. Landscaping plans and tree survey reports are used to guide siting of new hibernacula, sympathetic to the Biodiversity Action Plan and site location.

Landscape Planting –

Native trees and shrubs, or trees and shrubs of benefit to wildlife such as fruit bearing and nectar rich vegetation will be used to landscape garden areas wherever possible.

