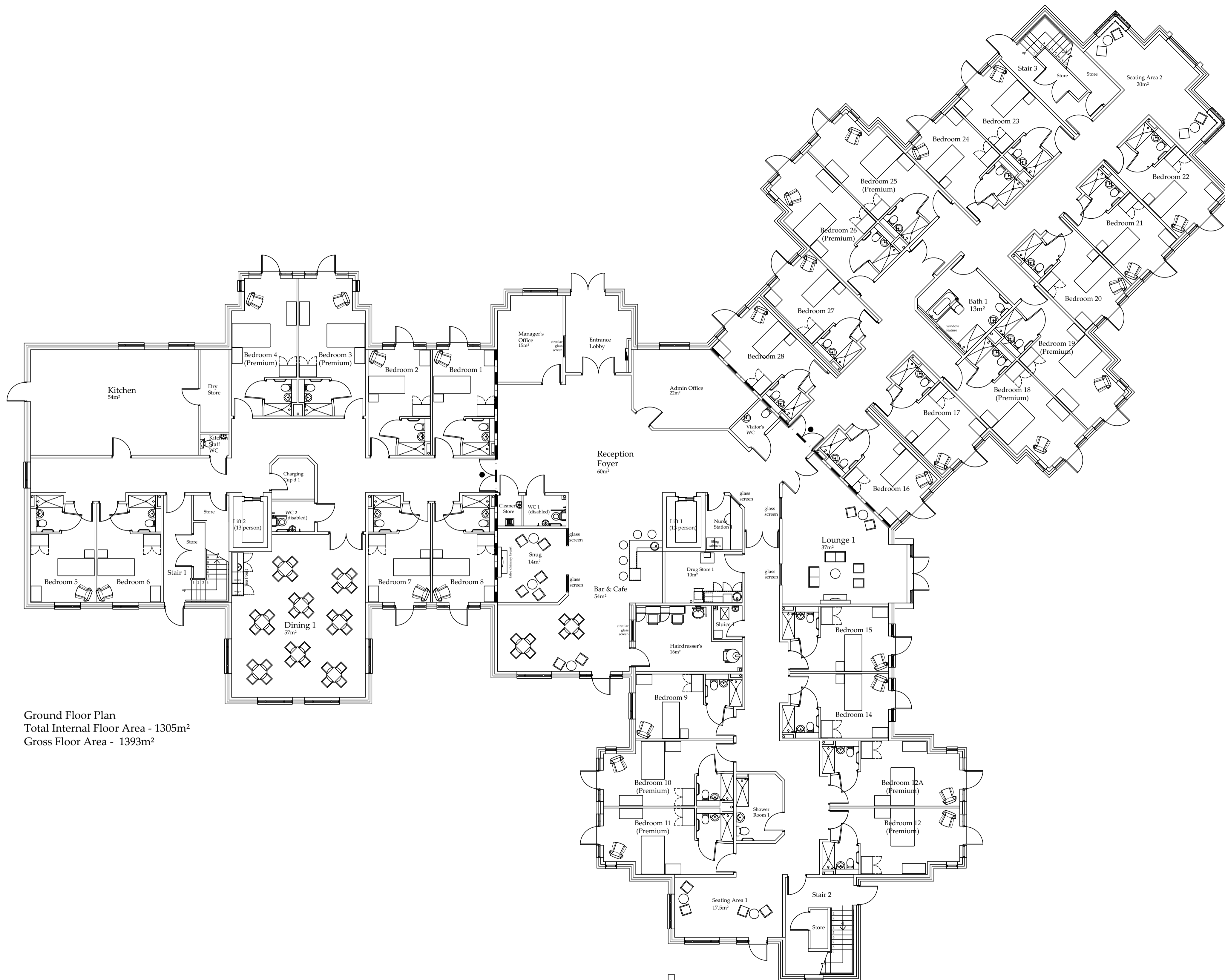


- Design and Quality Standards: (NA)
- Code for Sustainable Homes Level: (NA)
- BREEAM Rating: (NA)
- Lifetime Homes: (No)
- Building For Life Minimum Score: (NA)
- Secured by Design: (NA)

Rev.	Date	By/Chk



Ground Floor Plan  
 Total Internal Floor Area - 1305m<sup>2</sup>  
 Gross Floor Area - 1393m<sup>2</sup>

**Accommodation Schedule**

Dining 1 - 57m<sup>2</sup>  
 Lounge 1 - 37m<sup>2</sup>  
 Snug - 14m<sup>2</sup>  
 Total Lounge / Dining area - 108m<sup>2</sup>

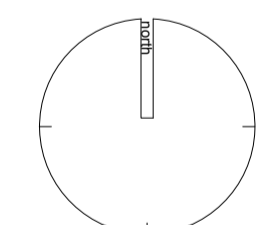
Reception Foyer - 60m<sup>2</sup>  
 Cafe & Bar - 51m<sup>2</sup>  
 Seating Area 1 - 17.5m<sup>2</sup>  
 Seating Area 2 - 20m<sup>2</sup>

28 Single Bedrooms with Ensuites

- Hairdresser's
- Manager's Office
- Admin Office
- 2 Lifts (2 x 13 person)
- 1 Bathroom
- 1 Shower Room
- 2 Disabled WC
- 1 Visitor's WC
- 1 Drug Store
- 1 Sluice
- Nurse Station
- Cleaner's Store
- Charging Cup'd
- Stores

**Key**

- Line of 1 hr fire barrier
- Beam over
- rwp Rain water pipe
- big Back inlet gully
- sp Soil pipe
- ss Stub stack
- Fire rated FD60S
- Fire Alarm Panel



Drawing Status			
<input type="checkbox"/> preliminary	<input type="checkbox"/> information	<input type="checkbox"/> planning	<input type="checkbox"/> tender
<input type="checkbox"/> comment	<input type="checkbox"/> approval	<input type="checkbox"/> construction	<input type="checkbox"/> record/as built
Scale		1:100 @ a1	
Date		April 2017	
Drawn/Checked		kpl/iam	
Dwg No		NE-2106-03-01-AC-011	

**Level 1 Plan  
 as Proposed**  
 Serpentine Road, Cleckheaton  
 Darrington Healthcare

