

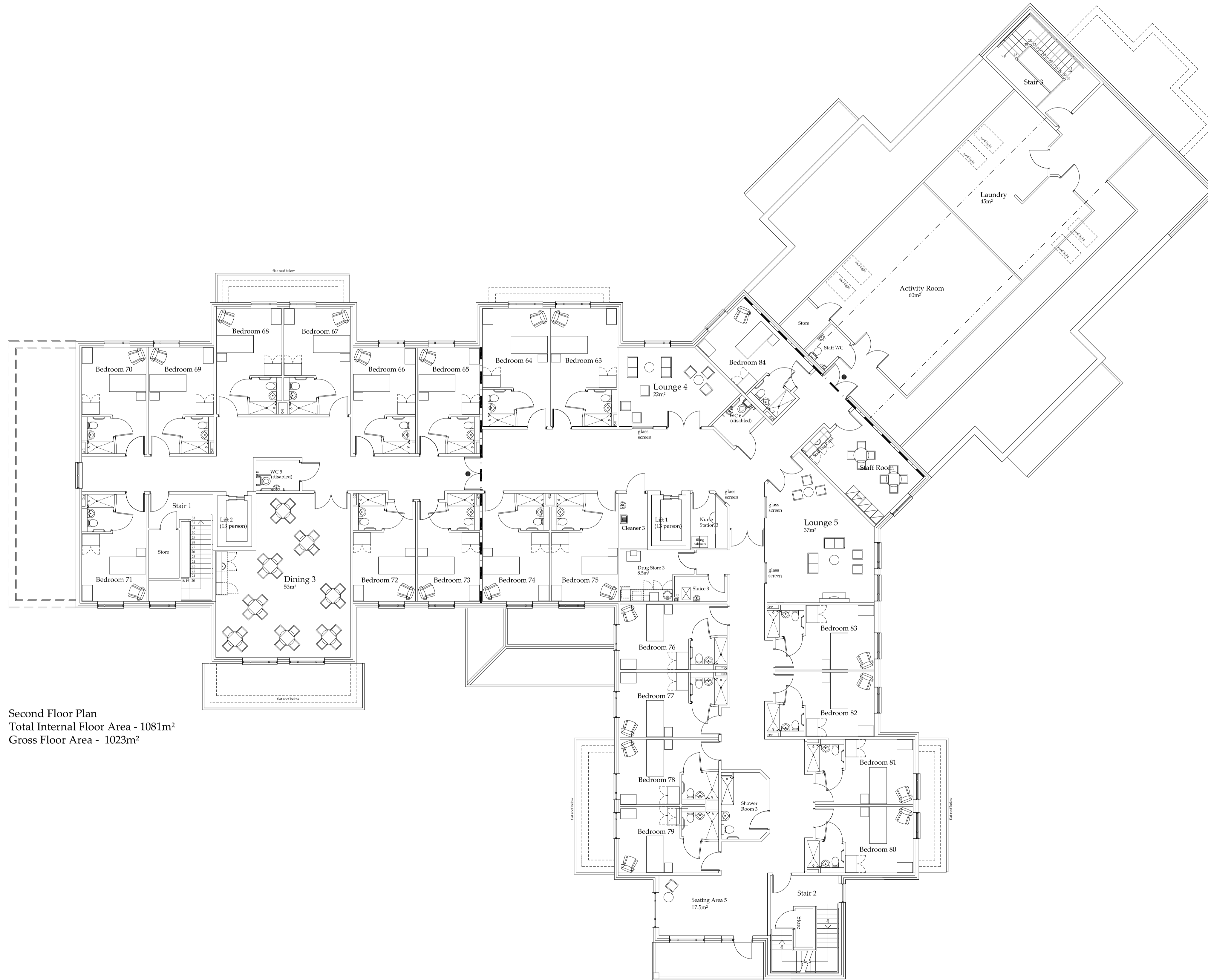
Design Criteria

Site to comply with the following design criteria subject to confirmation of the form of construction and assessment by an external accredited assessor.

- Design and Quality Standards: (NA)
- Code for Sustainable Homes Level: (NA)
- BREEM Rating: (NA)
- Lifetime Homes: (No)
- Building For Life Minimum Score: (NA)
- Secured by Design: (NA)

Revisions:

Rev.	Date	By/CHK



Second Floor Plan
Total Internal Floor Area - 1081m²
Gross Floor Area - 1023m²

Accommodation Schedule

Activity Room - 24m²
Dining 3 - 53m²
Lounge 4 - 22m²
Lounge 5 - 37m²
Total Lounge / Dining area - 127m²

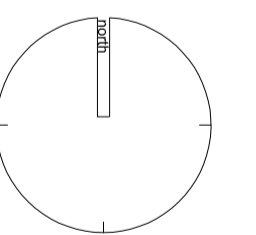
Seating Area 5 - 12.5m²

22 Single Bedrooms with Ensuities

2 Lifts (2 x 13 person)
1 Shower Room
2 Disabled WC
1 Drug Store
1 Sluice
Nurse Station
Cleaner's Store
Stores

Key

- Line of 1 hr fire barrier
- Beam over
- Rain water pipe
- Back inlet gully
- Soil pipe
- Stub stack
- Fire rated FD60S
- Fire Alarm Panel



Drawing Status	
<input type="checkbox"/> preliminary	<input type="checkbox"/> planning
<input type="checkbox"/> information	<input type="checkbox"/> tender
<input type="checkbox"/> comment	<input type="checkbox"/> construction
<input type="checkbox"/> approval	<input type="checkbox"/> record/as built
Scale	1:100 @ a1
Date	April 2017
Drawn/Checked	kp/iam
Dwg.No	NE-2106-03-01-AC-013

Level 3 Plan as Proposed

Serpentine Road, Cleckheaton
Darrington Healthcare

