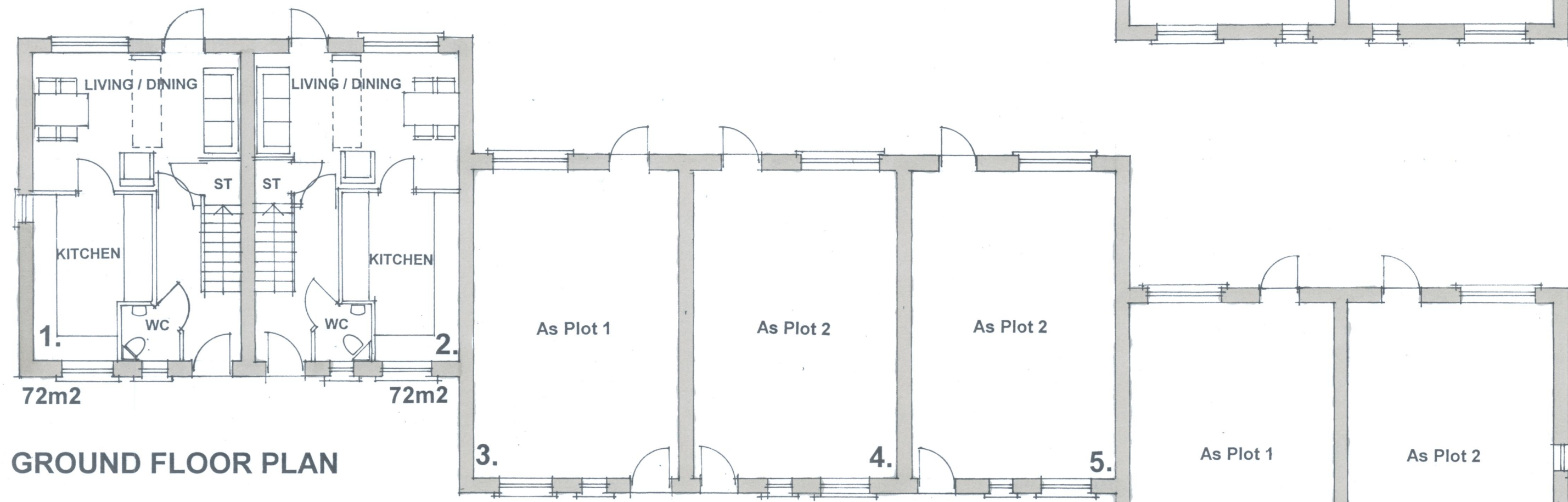


FIRST FLOOR PLAN



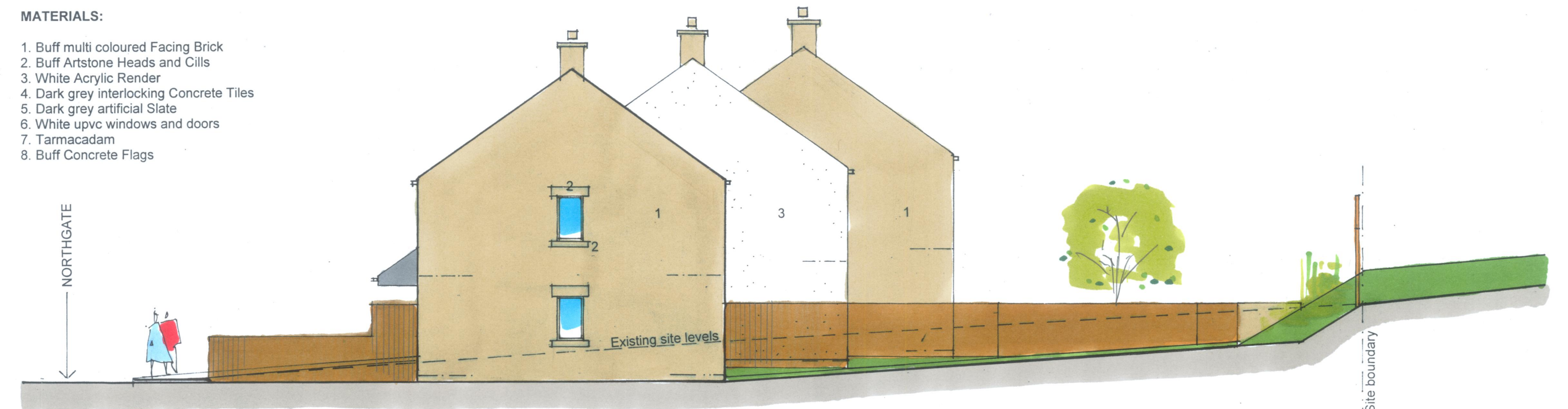
GROUND FLOOR PLAN



ELEVATION FACING NORTHGATE

MATERIALS:

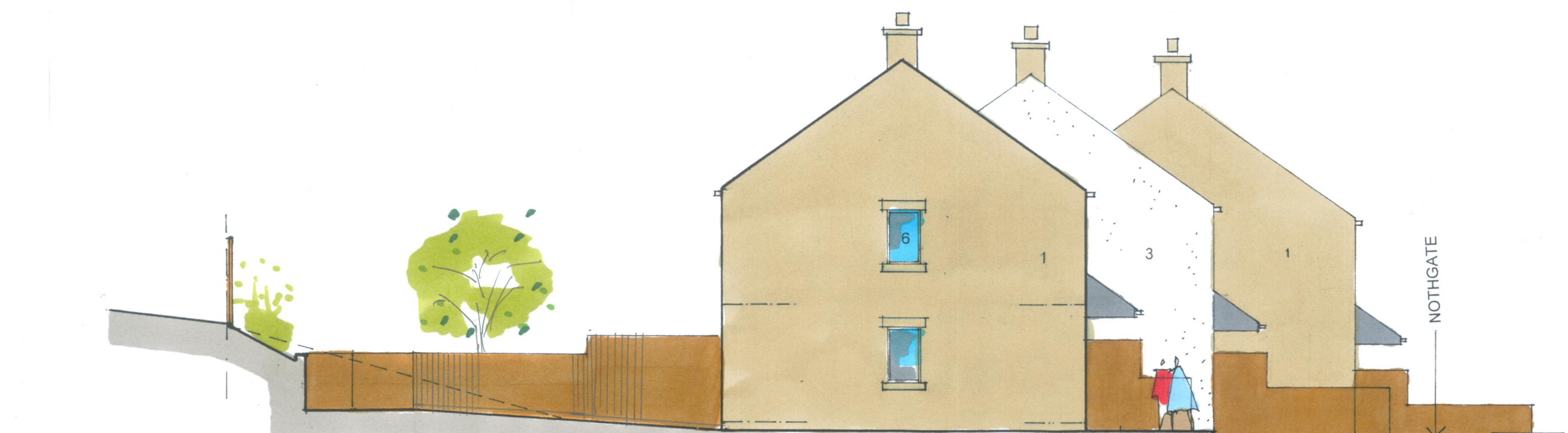
- 1. Buff multi coloured Facing Brick
- 2. Buff Artstone Heads and Cills
- 3. White Acrylic Render
- 4. Dark grey interlocking Concrete Tiles
- 5. Dark grey artificial Slate
- 6. White upvc windows and doors
- 7. Tarmacadam
- 8. Buff Concrete Flags



GABLE ELEVATION / SECTION SS



REAR ELEVATION



GABLE ELEVATION / SECTION YY



SITE LAYOUT PLAN