

A Cultural and Heritage Assessment was prepared by BWB in November 2016. With respect to prehistoric to Roman finds, their report noted that the proposal area contains one archaeological site from this period. (27) It is described as “a large, irregularly shaped enclosure with two or three parallel linear ditches is visible on aerial photographs as a crop mark feature. Dating evidence has not been produced in association with this site, although similar crop mark sites in the area typically date from the Iron Age or Romano- British periods”.

The BWB report concludes that there is the potential for archaeological deposits and or features to survive within the site.

“The proposed development site occupies land that has been used for agricultural purposes throughout its researchable history and remains largely undeveloped to the present day.

It goes on to recommend that a targeted geophysical survey is undertaken on parts of the site to further assess this.

Site 40 to the south of the Lees Hall Road site is recorded as an industrial site, the Cromwell Colliery was in operation in the 19th and 20th centuries. It is recorded as Inghams Pit by the time of the 1894 OS Map. The colliery has been largely demolished and the whilst the railway line to it has been removed , it remains as a track.

Impact on Setting

The BWB report notes that development of the two sites will have limited additional impact on the listed heritage

assets found in the wider area, given the built form around these monuments and to some degree the intervening mature vegetation including woodland.

Whilst the wider site area is currently in agricultural use, it has in the past, supported heavy industrial uses, with a number of collieries adjacent to the two sites.

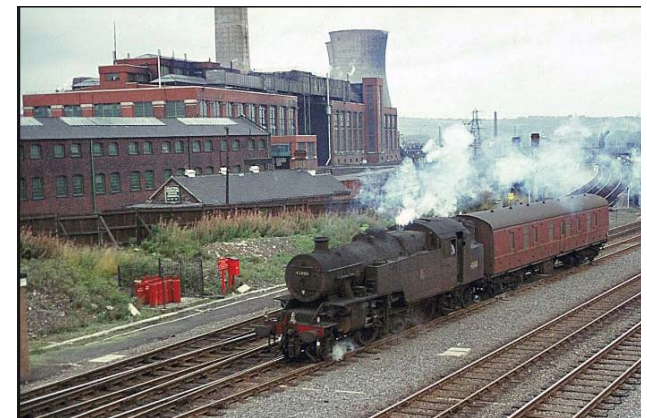
Combs Pit Thornhill circa 1971

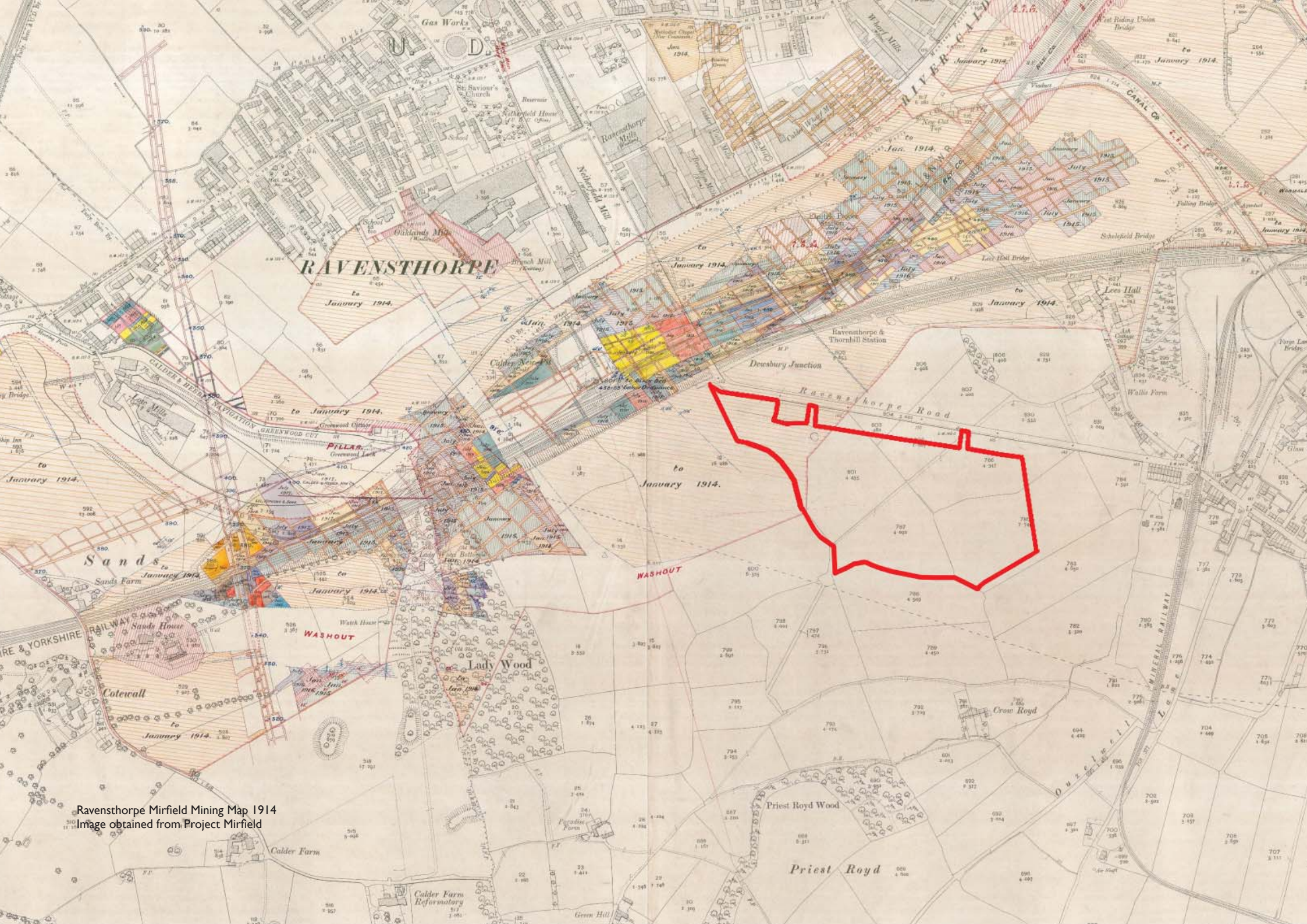


Thornhill Colliery circa 1893



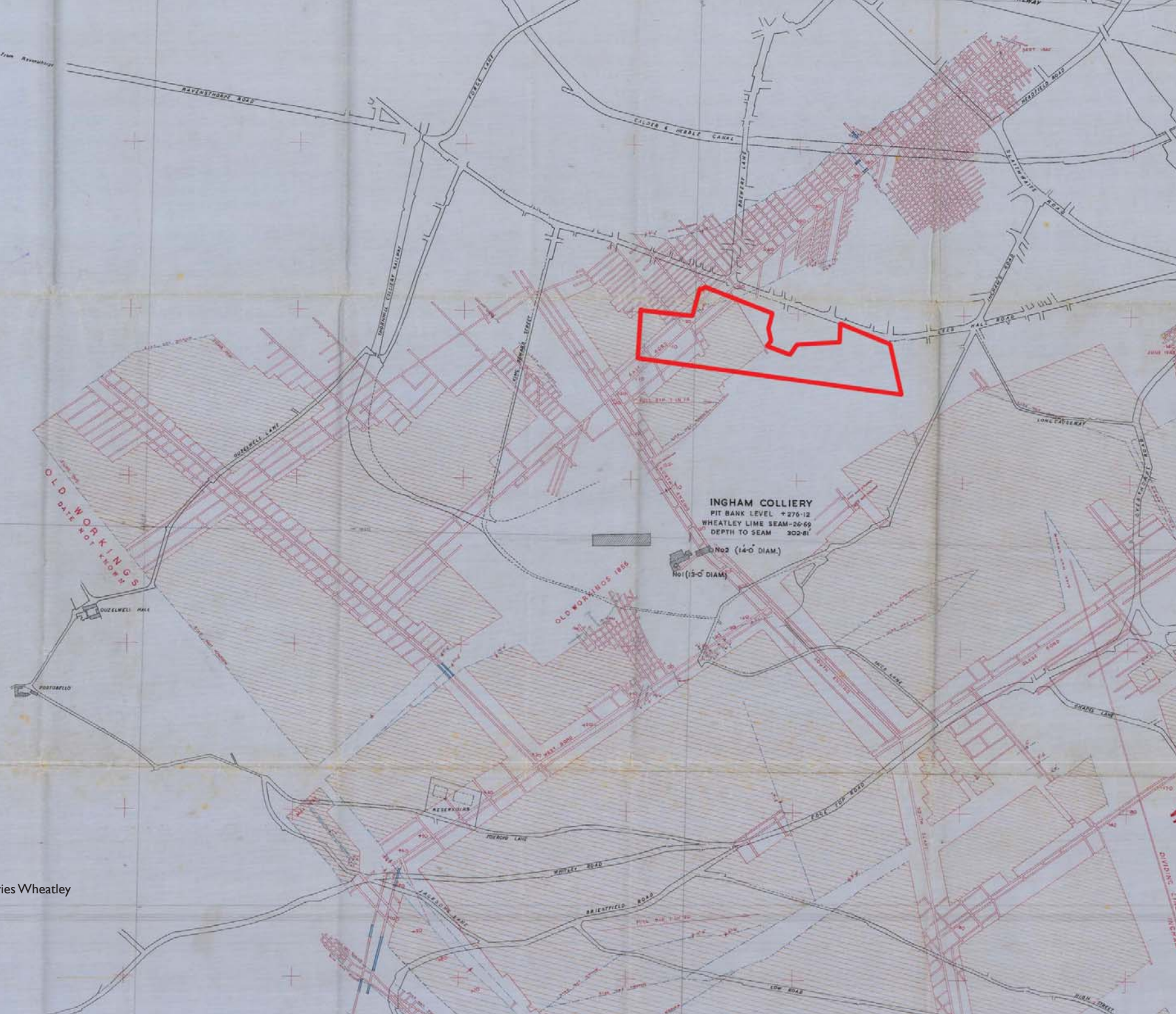
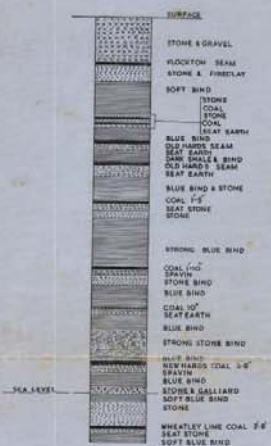
Ravensthorpe power Station circa 1967





Ravensthorpe Mirfield Mining Map 1914
Image obtained from Project Mirfield

INGHAM No 2 SHAFT SECTION
 SCALE: 40 FEET PER INCH.



Ingham and Combs Collieries Wheatley
 Lime Seam: April 1949