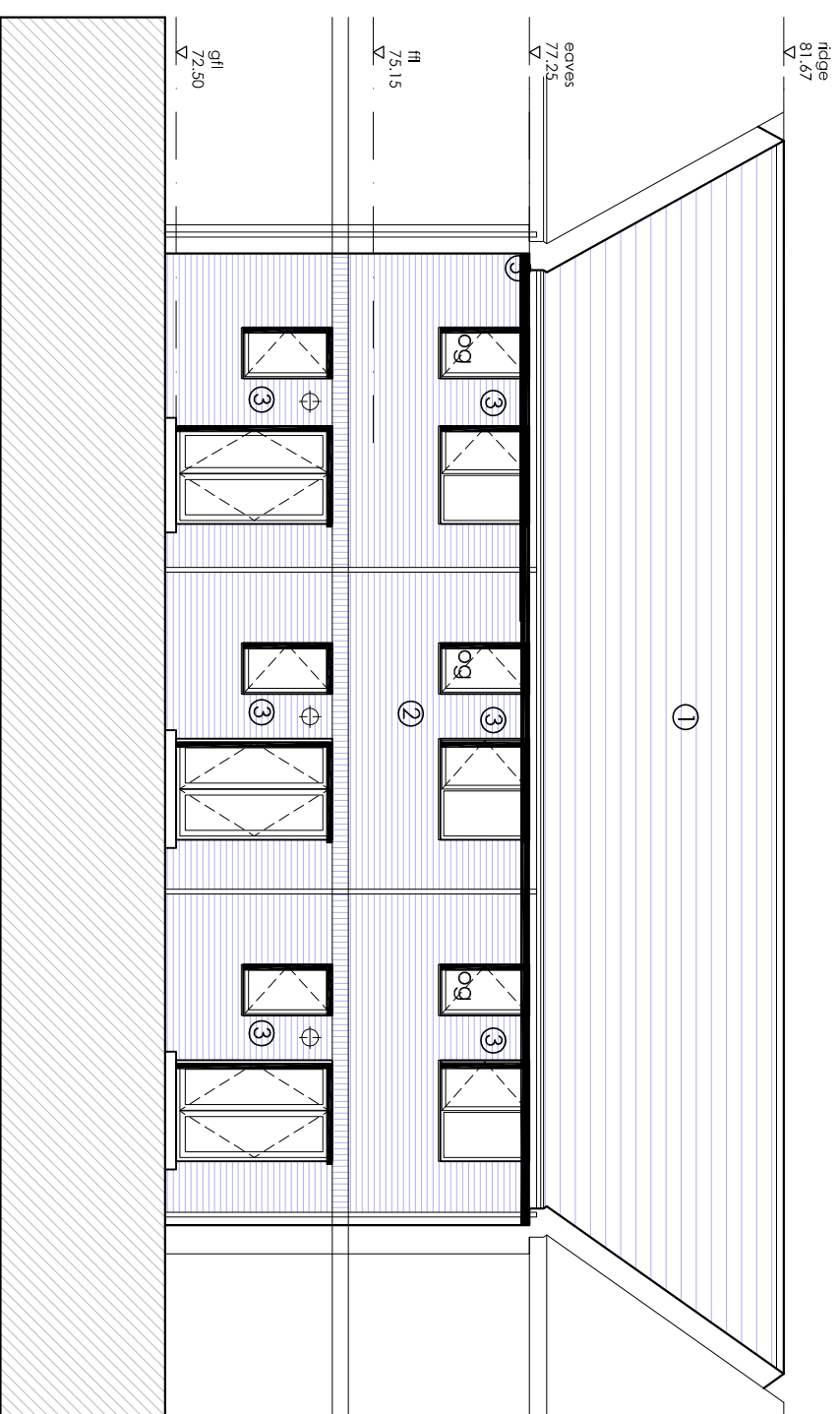
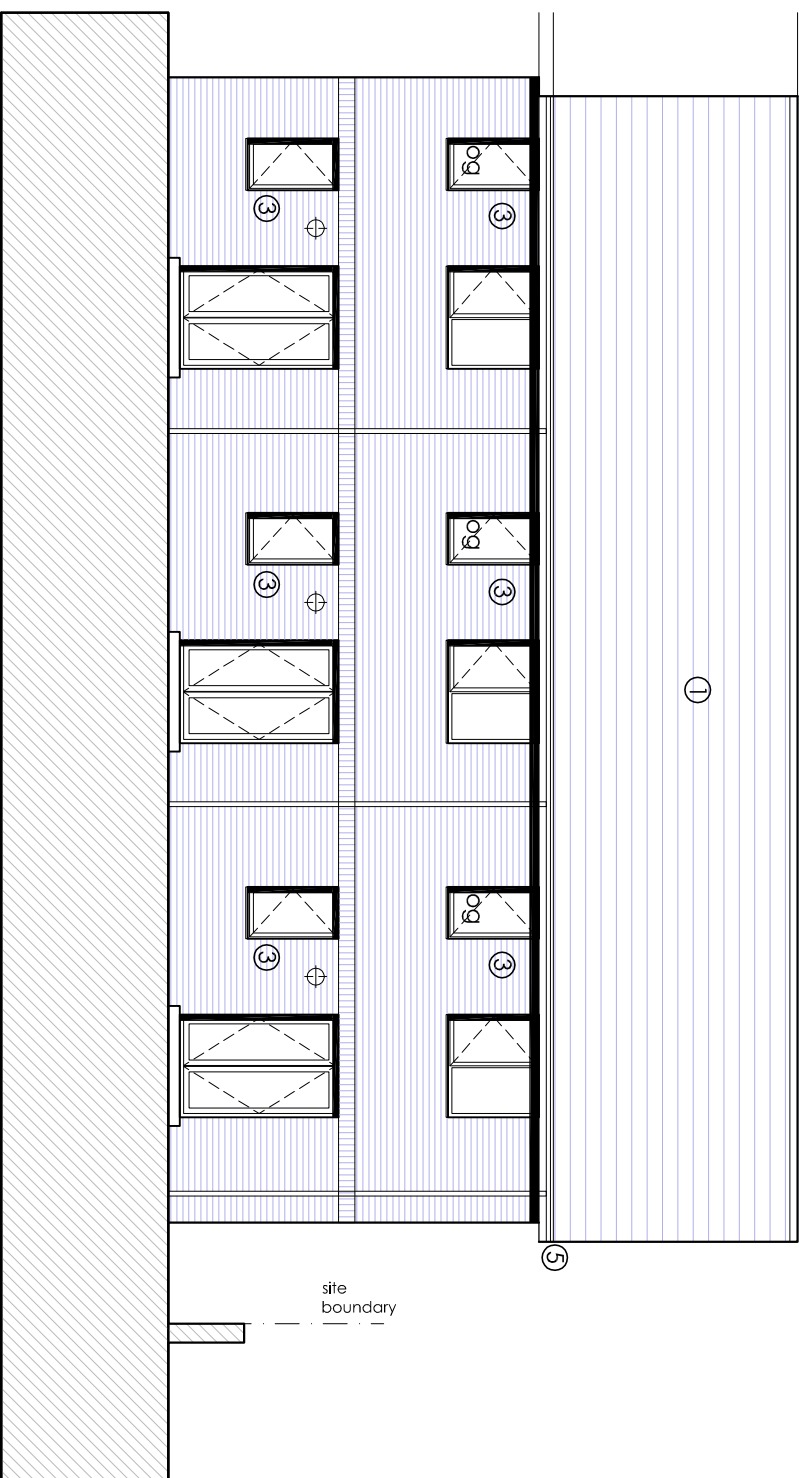


block a / rear elevation, unit 07



block a / rear elevation, units 04 - 06



block a / rear elevation, units 01 - 03

This drawing may be based on site information as supplied by third parties and as such Barrett+Barrett Ltd make no guarantees as to its accuracy. The features as illustrated are thus approximate and subject to a detailed Topographical and/or Measured Building Survey. Statutory Service enquiries and the confirmation by the client of all legal boundaries.

Scaling from this drawing will not be permitted under any circumstances and figured dimensions must be worked in all cases, taken from the face of existing partitions, grid lines or any other elements as prescribed on the drawing. Discrepancies must be reported to Barrett+Barrett Ltd prior to commencement of any work.

Barrett+Barrett Ltd grant licence to the intended recipient to employ the information as contained in this drawing for the purposes connected with the related project only. Copyright of this information remains solely the property of Barrett+Barrett Ltd unless otherwise assigned in writing. Any breach of the terms of this licence results in the termination of the licence and the medium and any resulting copies must be returned to Barrett+Barrett Ltd immediately.

Graphic Scale 1:100



schedule of materials

- ① blue/ black Matley Modern tile
- ② buff brickwork
- ③ grey upvc windows/ doors
- ④ grey composite door
- ⑤ black upvc fascias, gutter and downpipes
- ⑥ vertical composite "wood" weather board
- ⑦ grey single ply membrane flat roof
- og obscure glass

Barrett+Barrett Chartered architects

Barrett+Barrett Architects Ltd
 Morvic Office Park
 York Road
 Leeds
 LS15 4TA
 Tel: 0113 8232888
 info@barrettarchitects.com
 www.barrettarchitects.com

Project: Residential Development of former Public House
 Chickenley Lane, Dewsbury, WF12 8NE

Client: Mr Daniel Buck

Dwg title: Proposed Rear Elevations
 Block A - Units 01-07

Date:	Scale:	Drawn:	Checked:
May 2016	1:100 @ A3	SC	PAB
Project No:	Dwg No:	Rev:	Stage:
1342	131	-	Planning