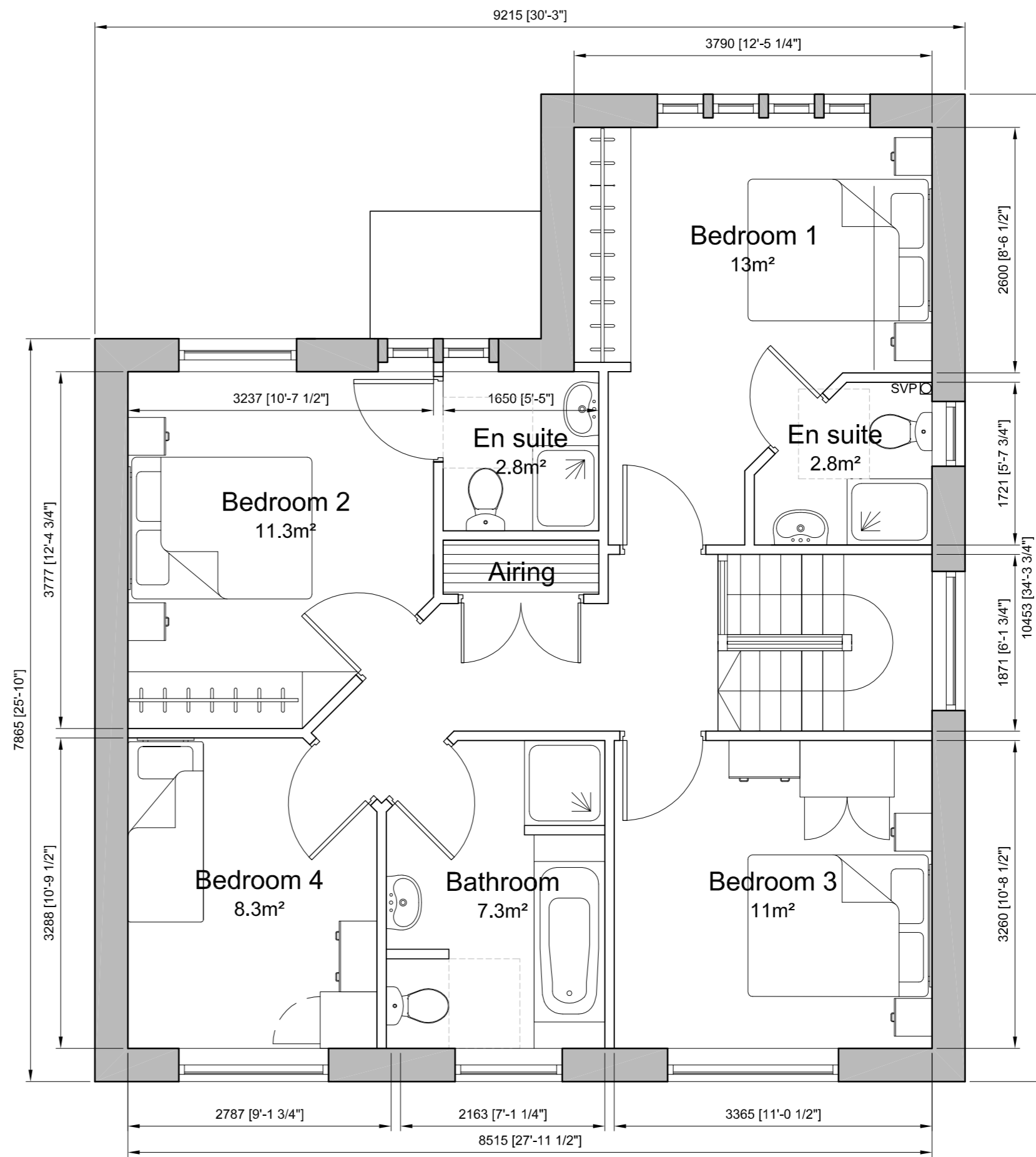


Ground floor
Type F - 'The Limerick'
 4B Detached House
 141.5m²/ 1523 sqft



First floor

REV: A | DATE: 9.5.15 | DRAWN: GJ | CHECKED: GJ
 HOUSE TYPE RENAMED TO 'LIMERICK'

REVISIONS

This design is copyright ©

**Mark Oliver
 Homes**

Residential Development
 Cowlersley Lane
 Cowlersley, Huddersfield.

Floor Plans
 Type F: The Limerick
 4-Bed Detached House

Drawn: GJ | Scale: 1:50@A2
 Date: 25.4.16 | Checked:

brewsterbye architects
 5 NORTH HILL ROAD
 HEADINGLEY
 LEEDS
 LS6 2EN
 telephone
 0113 2754000
 facsimile
 0113 2844250
 email
 info@brewsterbye.co.uk

Dwg No: 486/01(02)016 A