





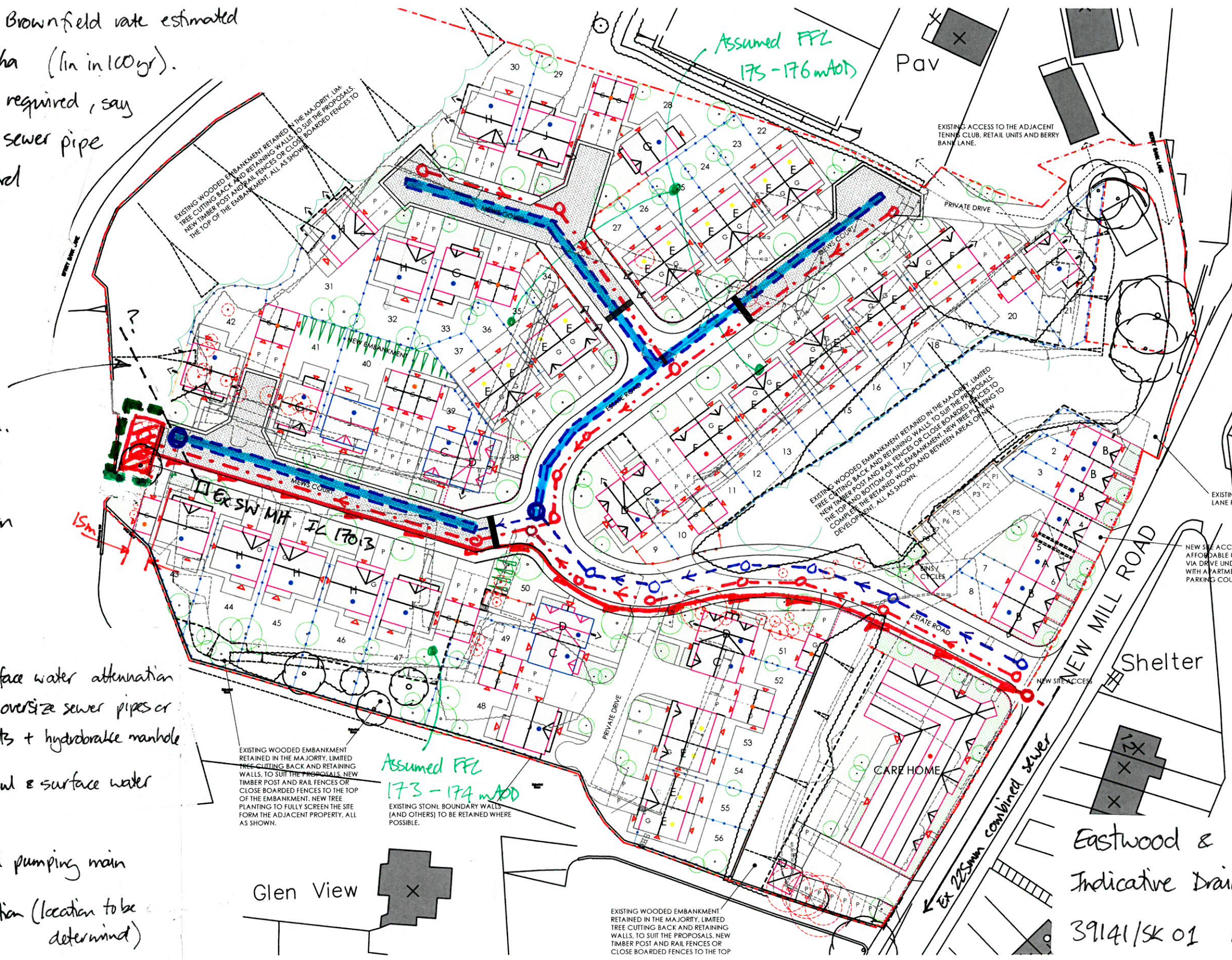


Surface water discharge to watercourse via existing drain. Brownfield rate estimated to be 22 l/s/ha (ln in 100yr).
 350m³ storage required, say
 200m x 1500φ sewer pipe
 + 2N^o flow control manholes

Assumed route of existing 300 mm surface water drain. Connection from site chased downstream. Drain route & condition to be surveyed to outfall.

- Key
-  Proposed surface water attenuation storage in oversize sewer pipes or box culverts + hydrobrake manhole
 -  Proposed foul & surface water sewers
 -  Sewers
 -  Proposed foul pumping main
 -  Pumping station (location to be determined)
 -  Retaining wall



1:750 @ A3  25m

Eastwood & Partners
 Indicative Drainage Layout
 39141/SK 01 Rev A