

0m
0m
0m
0m

Scale 1:50
Scale 1:100
Scale 1:200
Scale 1:1250

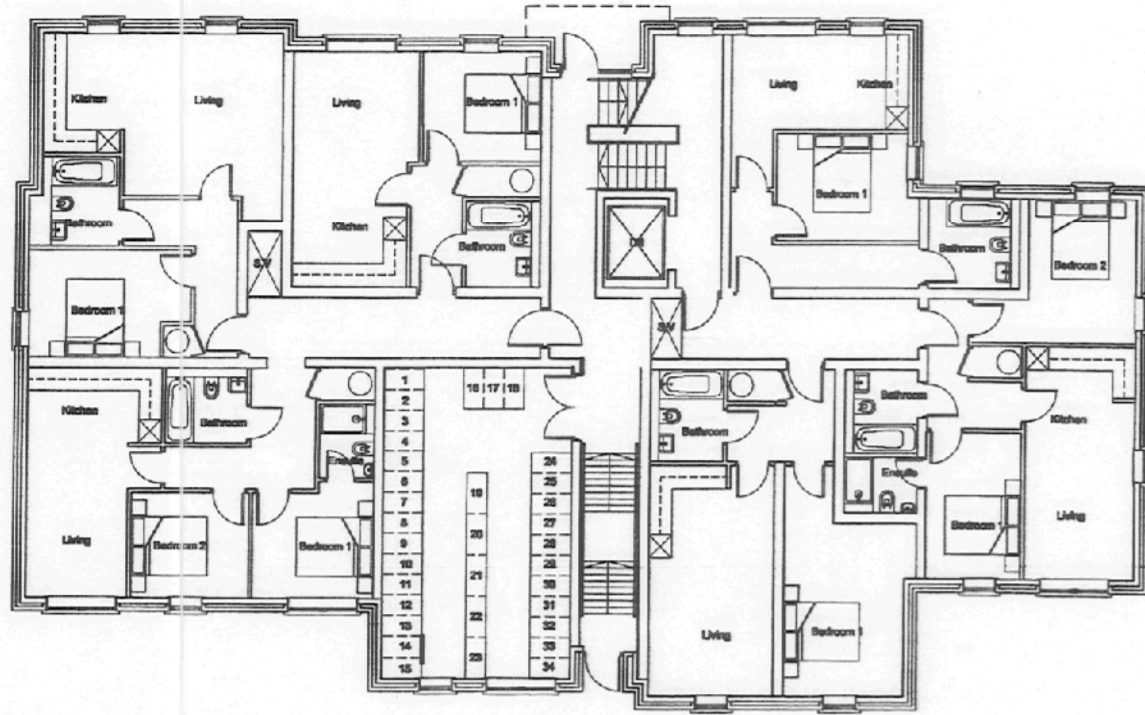
4m
8m
16m
100m

[When to scale of original plan, bar = 8cm]

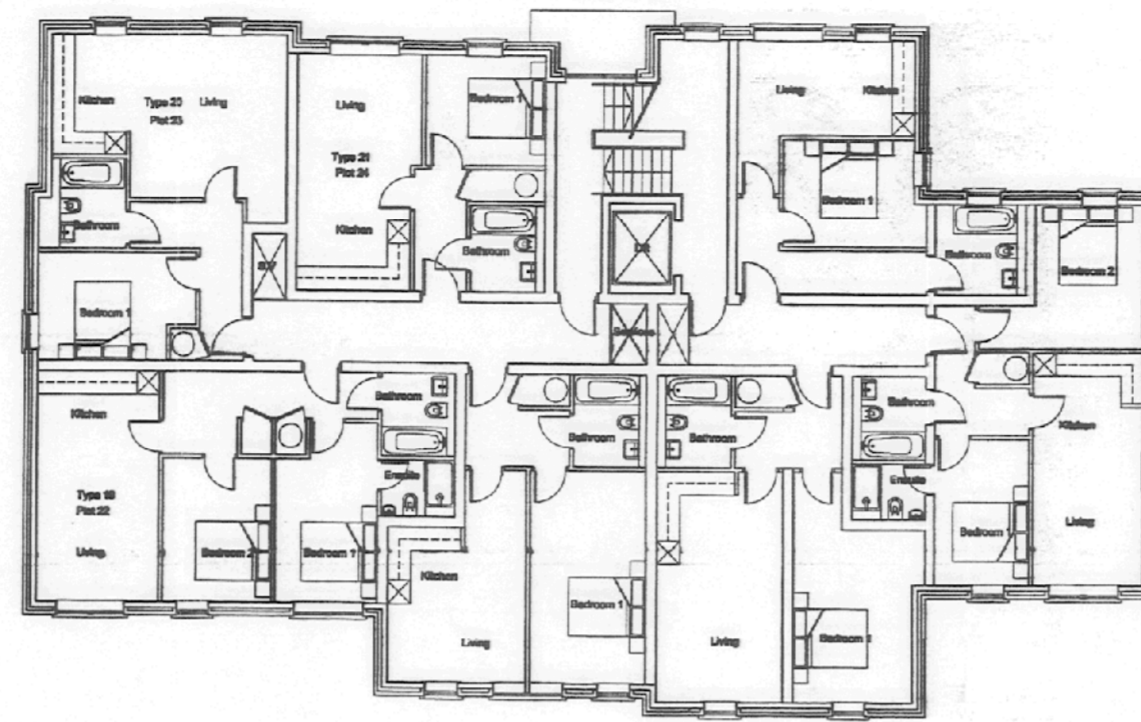
© Copyright Kirklees Metropolitan Council

- 087 077 000
- DO NOT SCALE FROM THIS DRAWING - USE FIGURED DIMENSIONS ONLY
 - TO BE READ IN CONJUNCTION WITH ALL OTHER CONSULTANTS / SPECIALISTS DRAWINGS. REPORT ANY DISCREPANCIES BEFORE AFFECTED WORK COMMENCES
 - ALL SETTING OUT DIMENSIONS TO BE CHECKED ON SITE BY CONTRACTOR BEFORE WORK COMMENCES

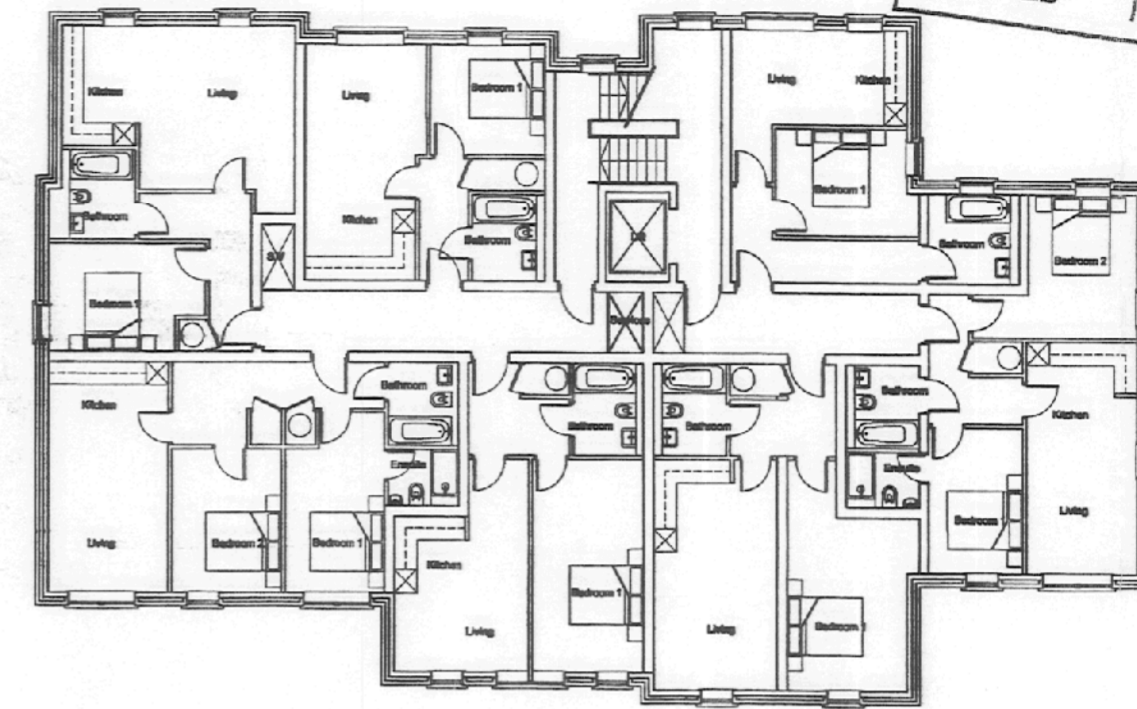
AMENDED PLAN
RECEIVED- 11 AUG 2008



Ground Floor



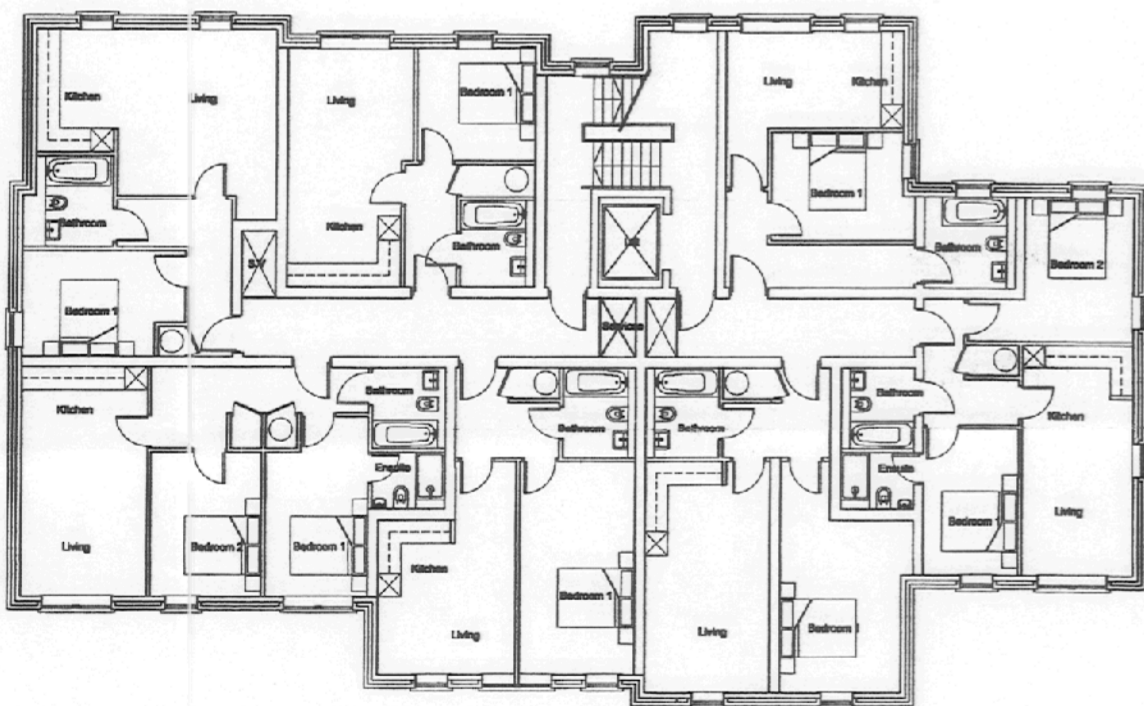
First Floor



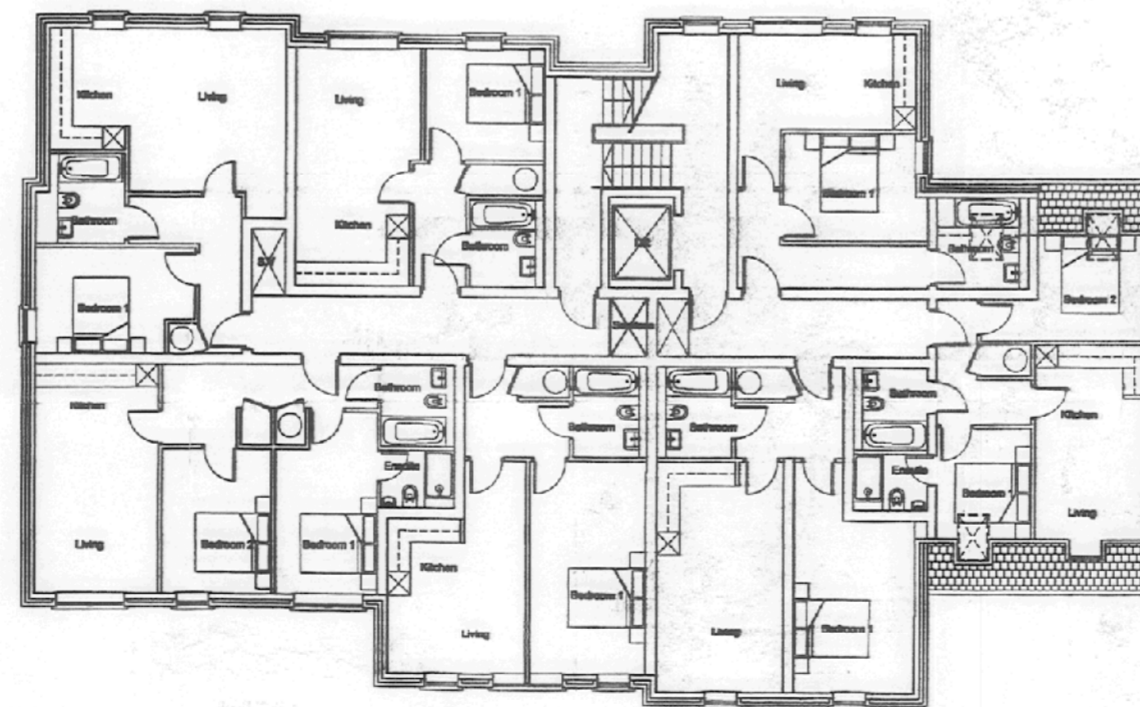
Second Floor

Schedule of Accommodation

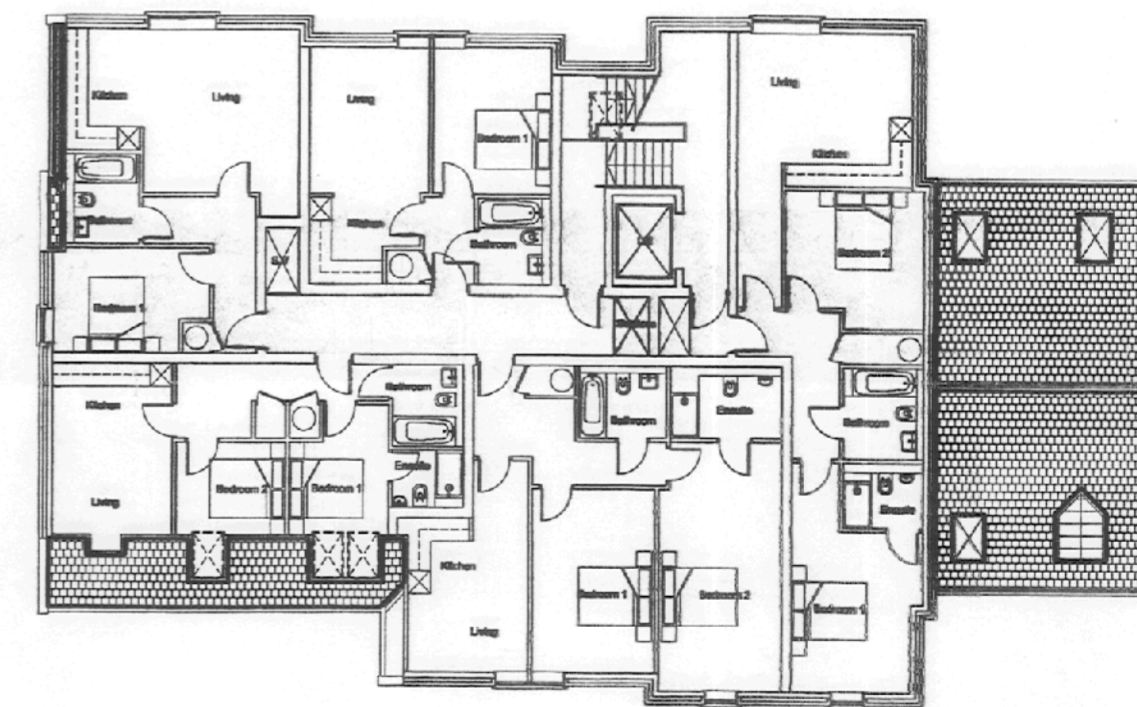
- 26 No 1 Bed Apartments
- 13 No 2 Bed Apartments
- 39 Apartments in Total
- Overall reduction of 2 Apartment
- Cycle Spaces
- 35 "vertical cycle lockers"



Third Floor



Fourth Floor



Fifth Floor

rev. description

client Amco Developments (Dewsbury) Limited

project Carlton Road, Dewsbury

Building Two - Plans

drawing title

drawing number 060136_231

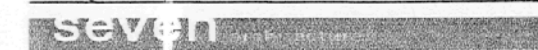
revision

drawing status Planning

scale 1:200 @ A2

date 8th August 2008

drawn by AK



Severn Architecture office at:
The White House, Widderspool Park, WARRINGTON, Cheshire, WA4 6PL
t: 01925 438105
Suite 1, The Exchange, Station Parade, HARROGATE, North Yorkshire, HG1 1TS
t: 01423 708607
e: info@severnarchitecture.co.uk www.severnarchitecture.co.uk