

- DO NOT SCALE FROM THIS DRAWING - USE FIGURED DIMENSIONS ONLY
- TO BE READ IN CONJUNCTION WITH ALL OTHER CONSULTANTS / SPECIALISTS DRAWINGS. REPORT ANY DISCREPANCIES BEFORE AFFECTED WORK COMMENCES
- ALL SETTING OUT DIMENSIONS TO BE CHECKED ON SITE BY CONTRACTOR BEFORE WORK COMMENCES

0m 0m 0m 0m

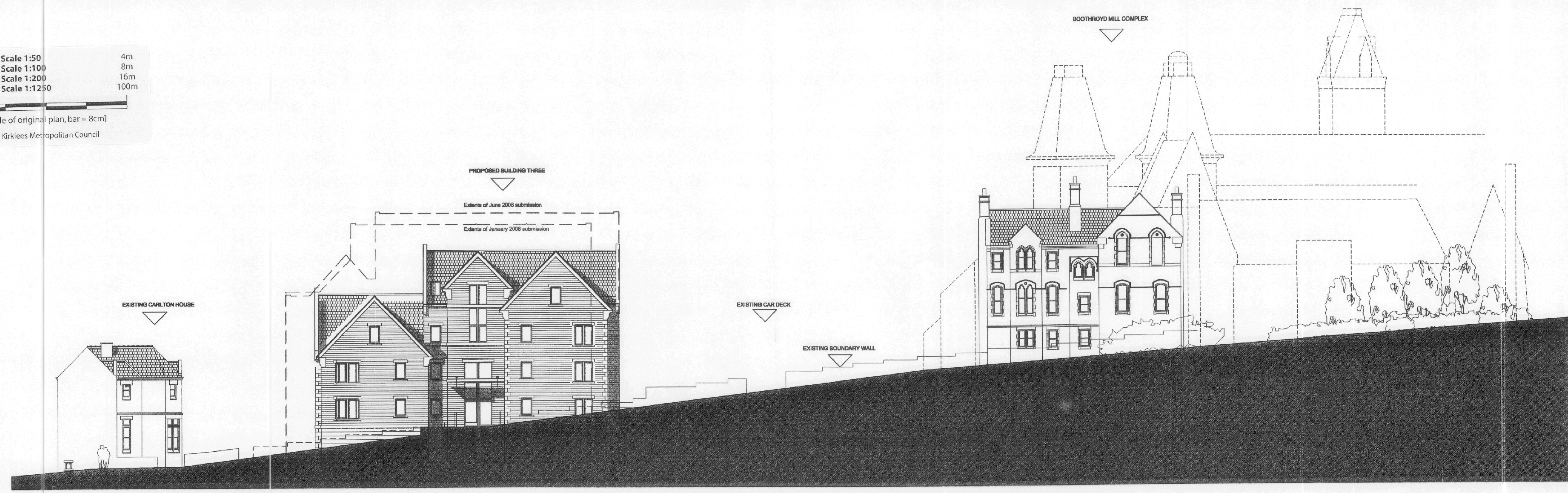
Scale 1:50
Scale 1:100
Scale 1:200
Scale 1:1250

4m
8m
16m
100m

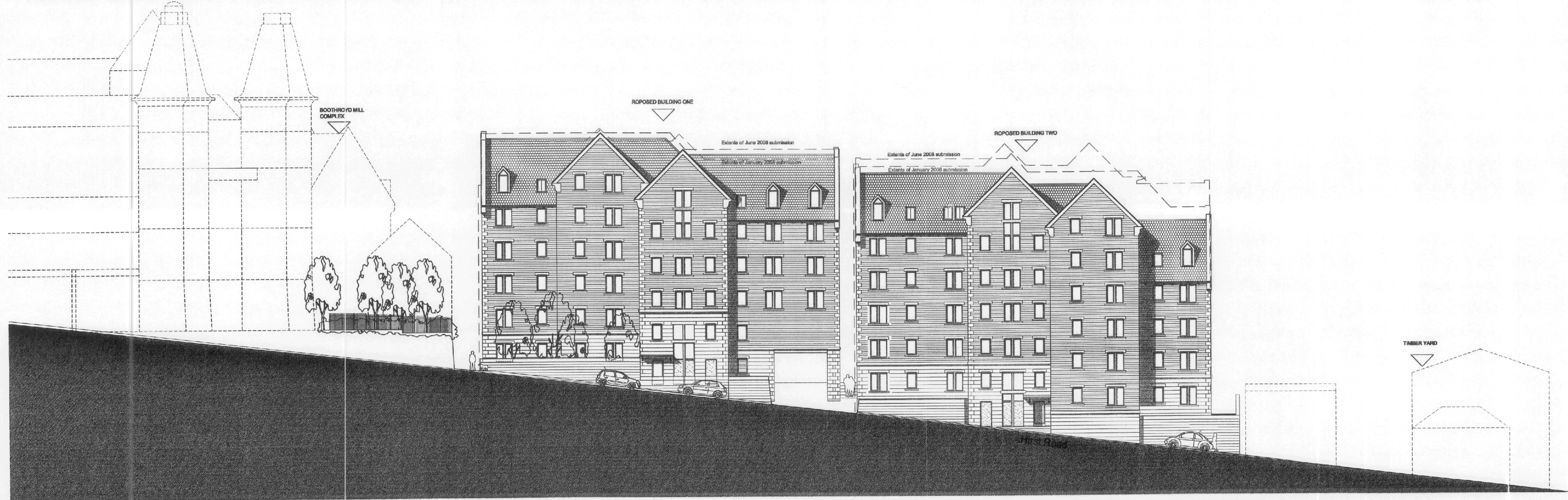
[When to scale of original plan, bar = 8cm]

© Copyright Kirklees Metropolitan Council

AMENDED PLAN
RECEIVED- 02 OCT 2008

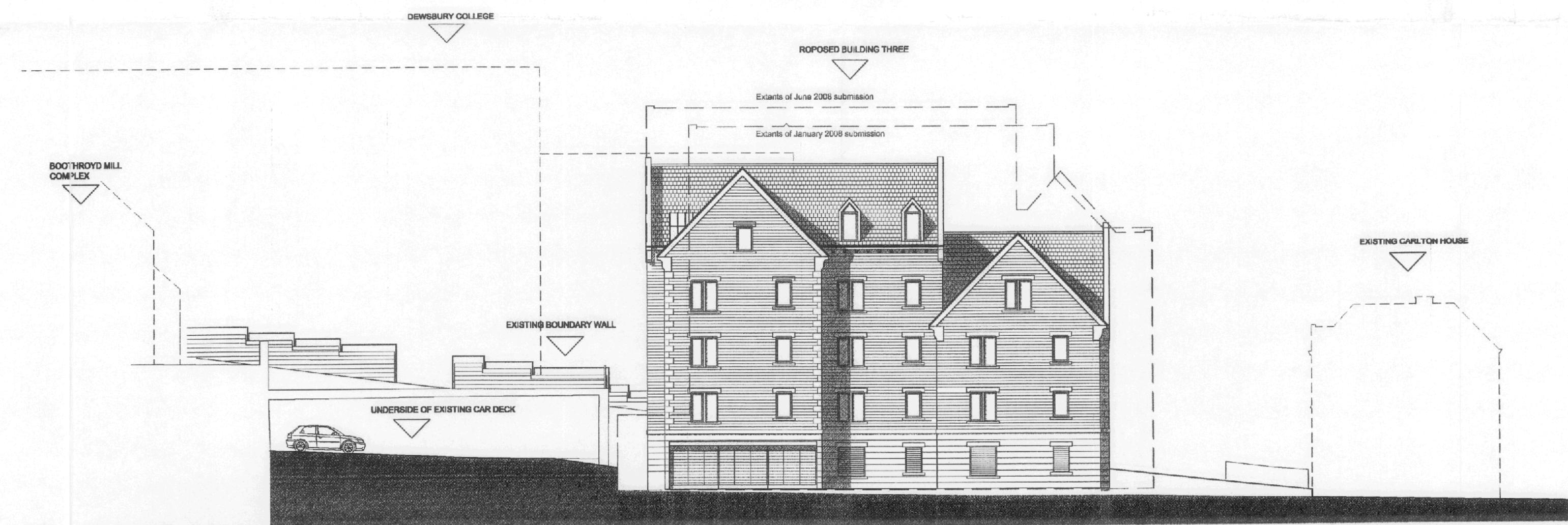


View from Carlton Road



View from Hirst Road

rev.	description	A	29/08/08	AK	IC
	Amendments following planning feedback received 24/08/08				



View from Court Yard towards Carlton Road

client Amco Developments (Dewsbury) Limited

project Carlton Road, Dewsbury

drawing title Contextual Elevations

drawing number 060136_236

revision A

drawing status Planning

scale 1:200 @ A1

date 8th August 2008

drawn by AK

seven Architecture

Seven Architecture offices at:
The White House, Widenesport Park, WARRINGTON, Cheshire, WA4 6RL
t: 01925 438100
Suite 1, The Exchange, Station Parade, HARRINGTON, North Yorkshire, HG1 1TS
t: 01423 708807
e: info@sevenarchitecture.co.uk www.sevenarchitecture.co.uk