
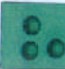




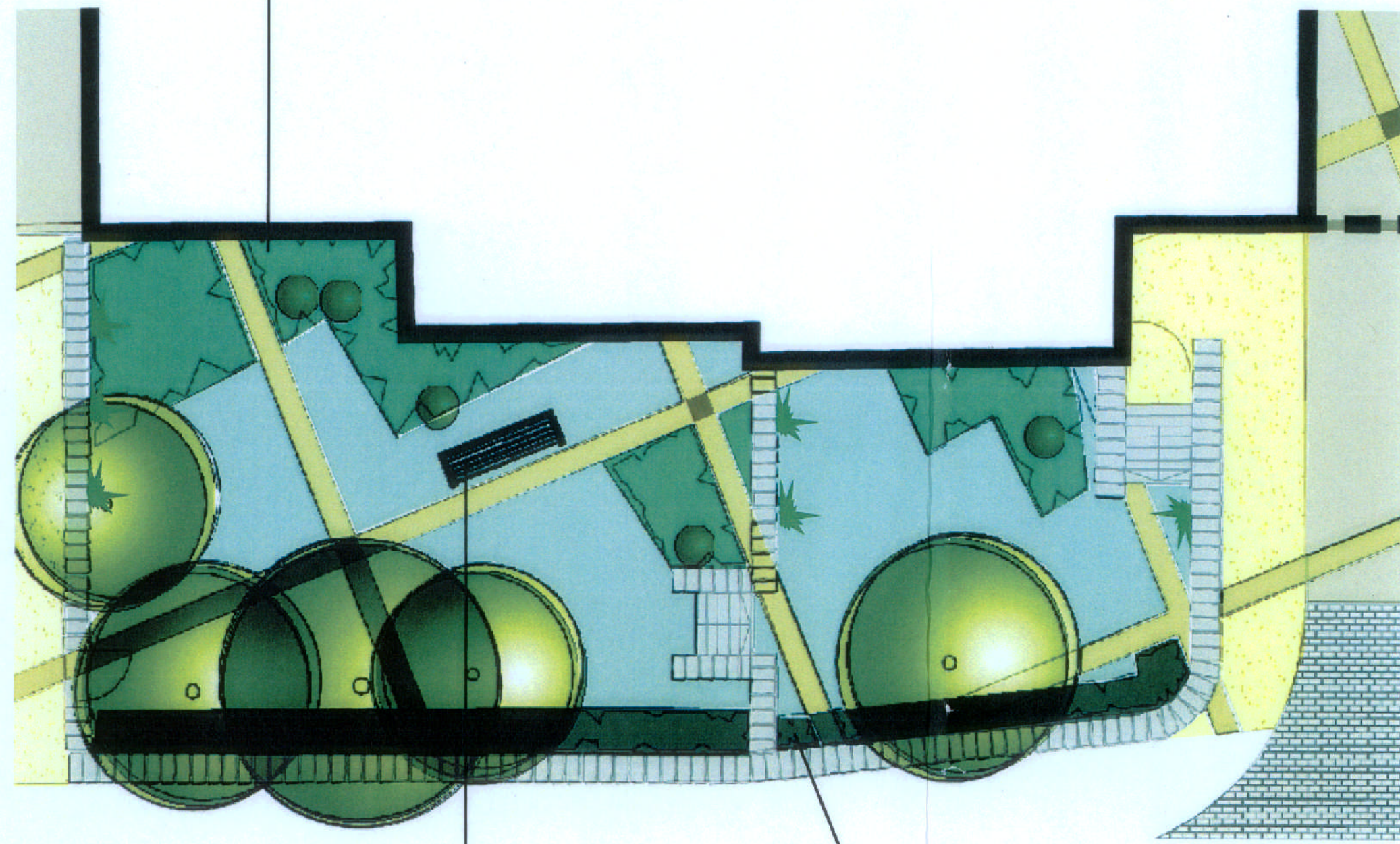


Key: 8/61/90245/E2

-  Proposed trees
-  Proposed shrub planting
-  Proposed climbers
-  Proposed turf
-  Proposed climbers on pergolas over parking spaces
-  Proposed hedges

- Materials**
-  **Internal Roads and Paths** - Tegula block paving. Traditional colour, random laying pattern. Supplied by Marshalls.
 -  **Bands of Tegula Cobbles** - Tegula cobbles. 480mm wide grid. Harvest colour. Supplied by Marshalls.
 -  **Parking Bays** - Resin bound gravel 6mm Tuscan Pebble. Supplied by Addagrip.
 -  **Pedestrian Frontages** - Marshalls Perfecta - Buff.
 -  **Front Rumble Strip** - Natural Yorkstone cobbles. Greenmoor Rustic, laid stretcher bond. Supplied by Marshalls.
 -  **Amenity Seating Areas** - 450x450mm Saxon paving flags, buff. Supplied by Marshalls.
 -  1.8m Timber Bench

Shrub planting areas beneath ground floor windows are to be low in height and are to incorporate plants that are spiny in nature in accordance with secure by design principles.



The seating area exploits its vantage point by borrowing views of the surrounding landscape. The south facing aspect of this space will benefit from the light shade provided by Rowan and Birch trees.

The distant views are a considerable feature of this amenity space and therefore the proposed beech hedging is to be maintained at a level no higher than 600mm above the top of the retained wall.

AMENDED PLAN
RECEIVED:- 10 NOV 2008

0m	Scale 1:50	4m
0m	Scale 1:100	8m
0m	Scale 1:200	16m
0m	Scale 1:1250	100m



[When to scale of original plan, bar = 8cm]

© Copyright Kirklees Metropolitan Council

COURTYARD 2 DETAIL

Carlton Road, Dewsbury

SCALE: NTS 08/02/08

