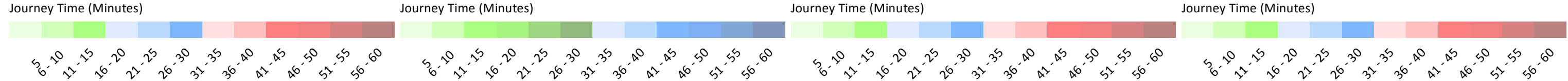
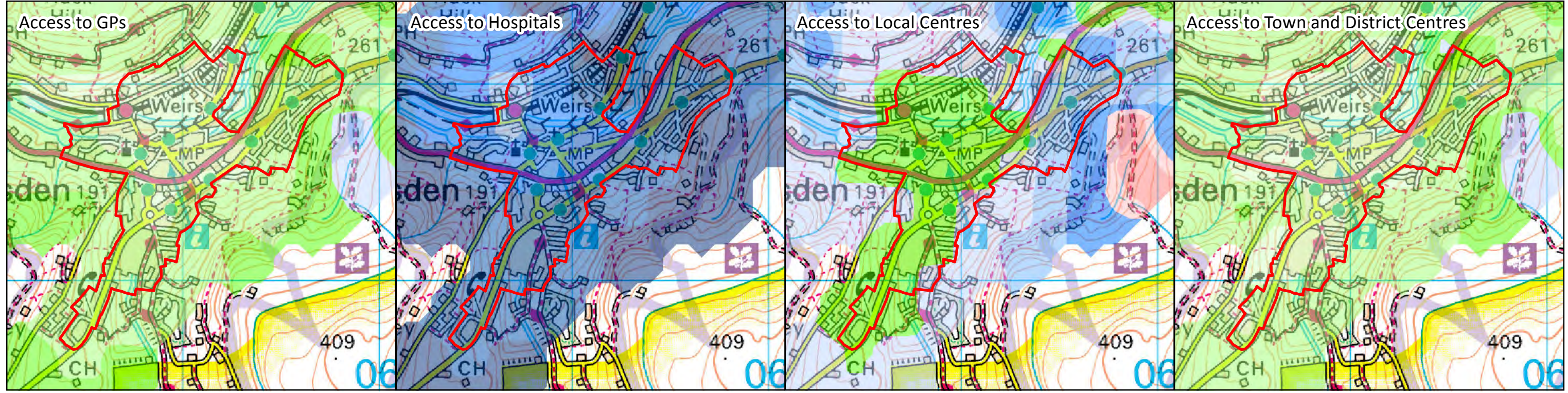
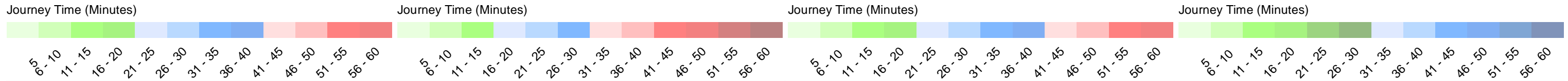
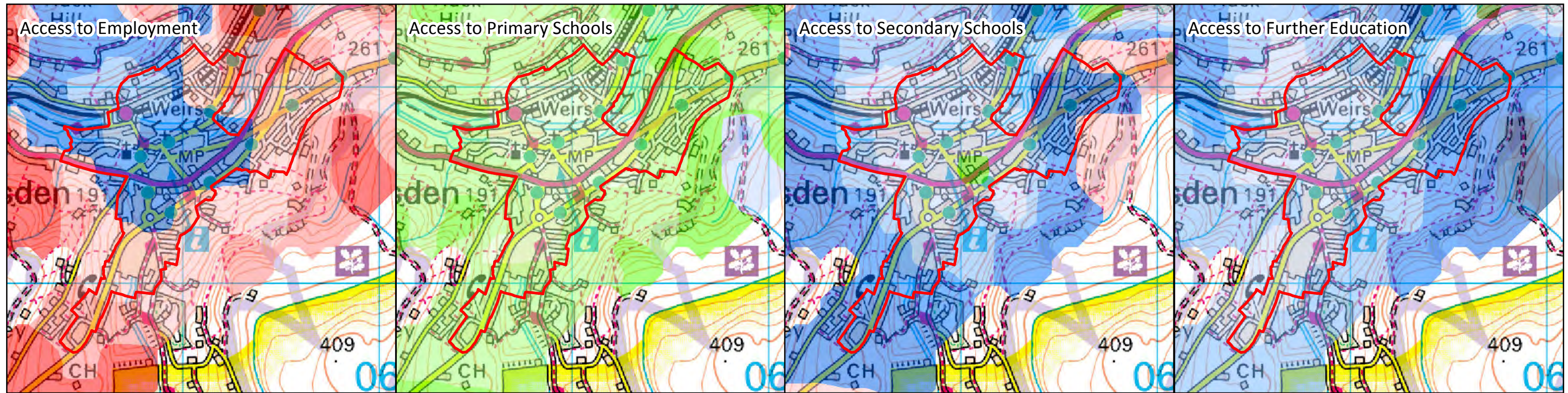
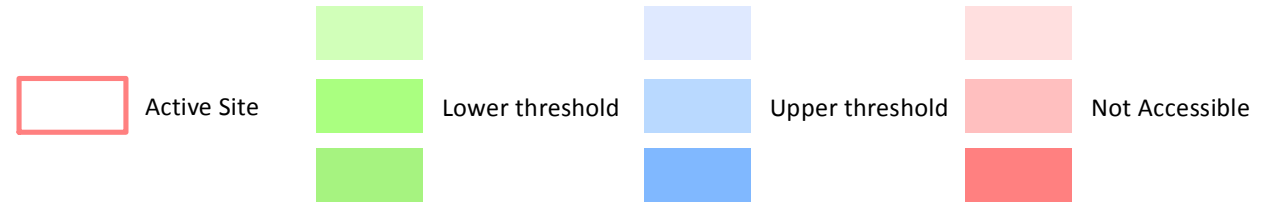


# Kirklees Council Housing Allocations - Accessibility Assessments March 2015

Public Transport Journey Time Thresholds

## Local Settlements: Marsden

The following travel time indicators are based on the travel time to reach each destination type by public transport to a maximum of 60 minutes journey time. The assessments are based on a AM peak period.



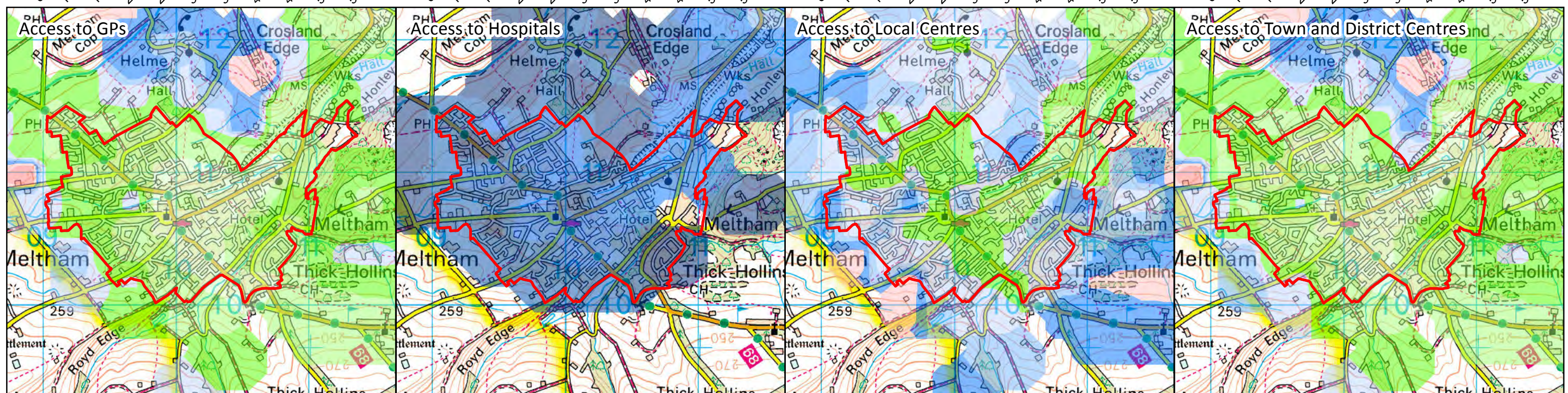
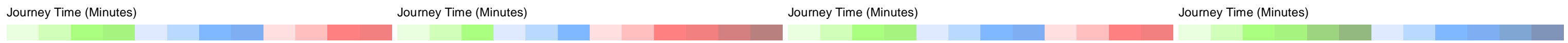
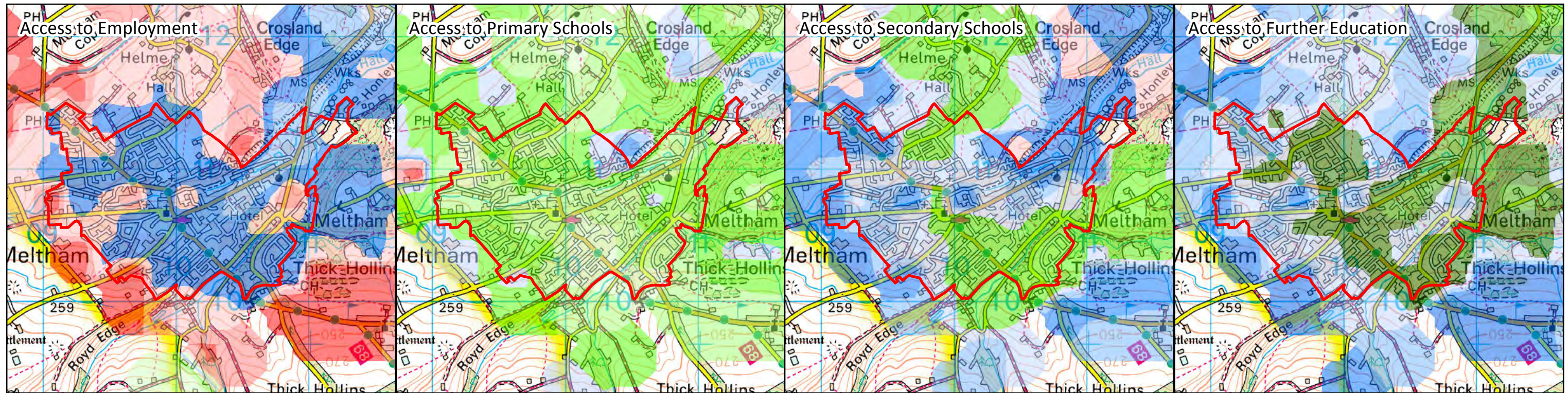
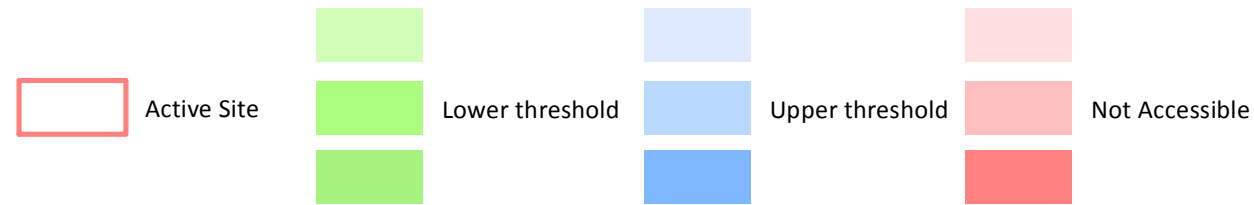
# Kirklees Council Housing Allocations - Accessibility Assessments March 2015

Public Transport Journey Time Thresholds



## Local Settlements: Meltham

The following travel time indicators are based on the travel time to reach each destination type by public transport to a maximum of 60 minutes journey time. The assessments are based on a AM peak period.

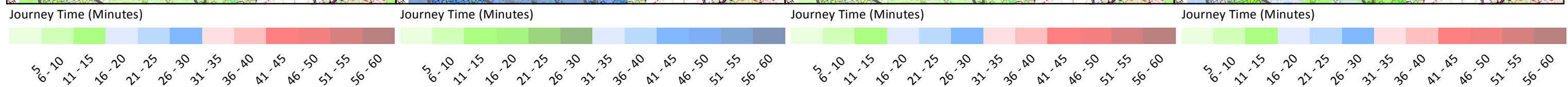
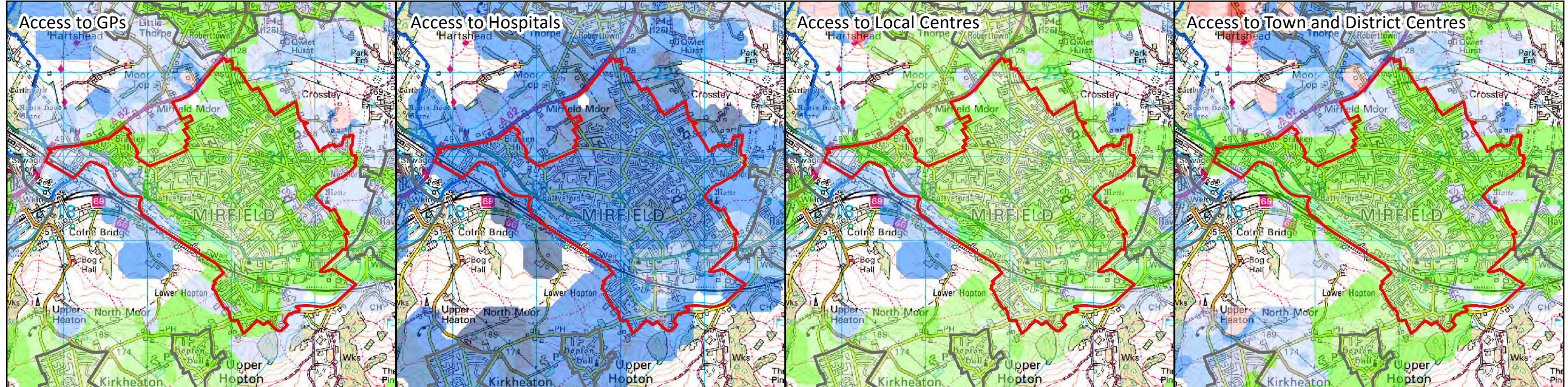
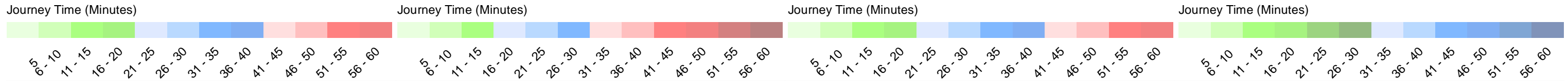
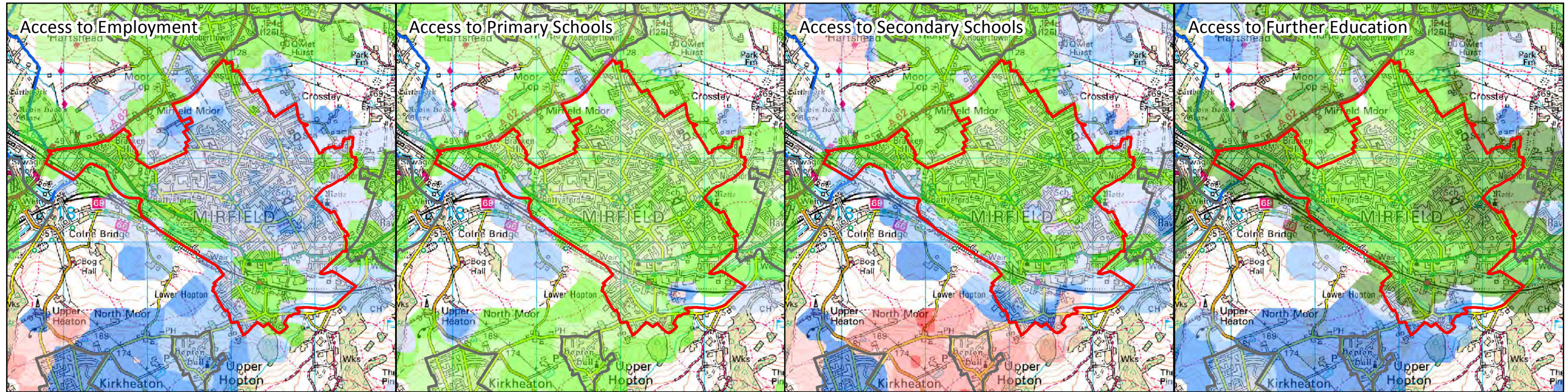
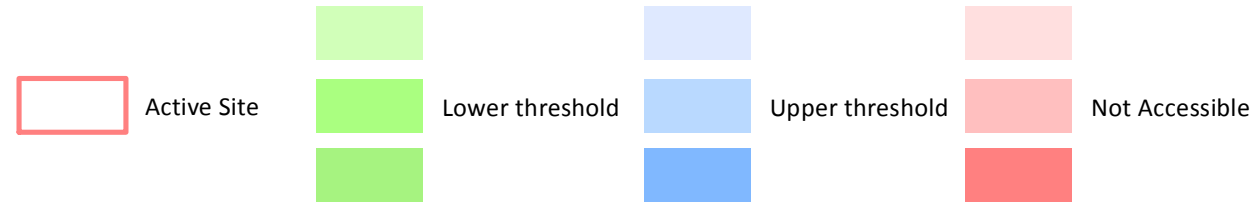


# Kirklees Council Housing Allocations - Accessibility Assessments March 2015

Public Transport Journey Time Thresholds

## Local Settlements: Mirfield

The following travel time indicators are based on the travel time to reach each destination type by public transport to a maximum of 60 minutes journey time. The assessments are based on a AM peak period.



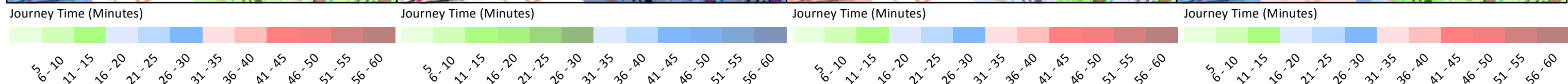
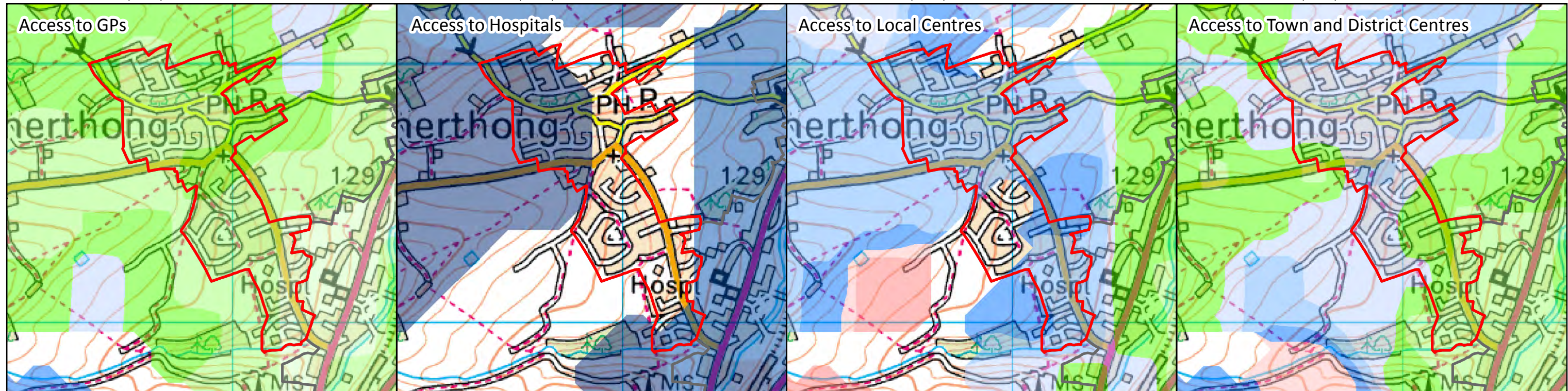
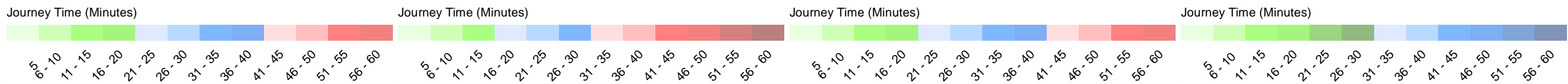
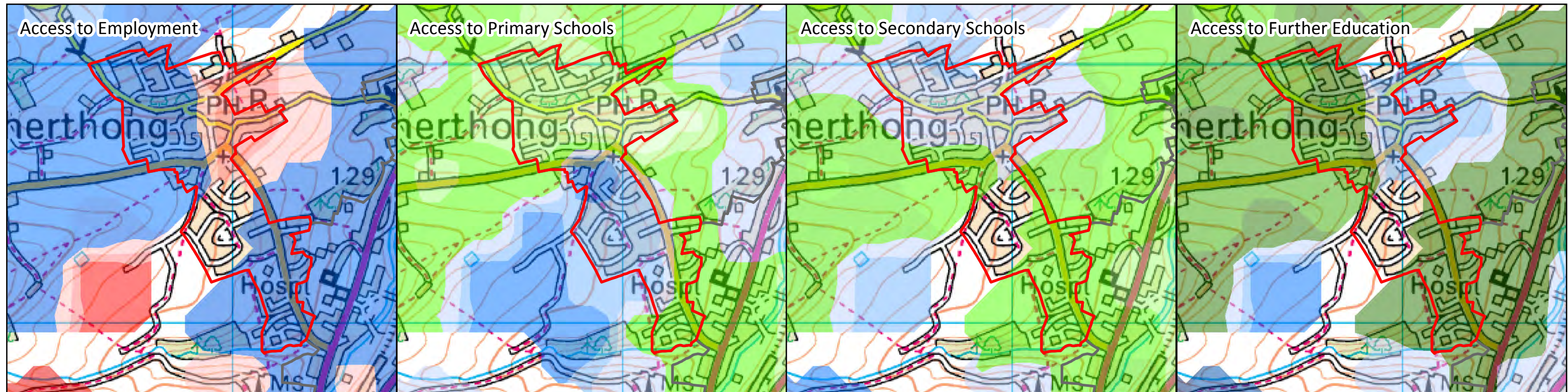
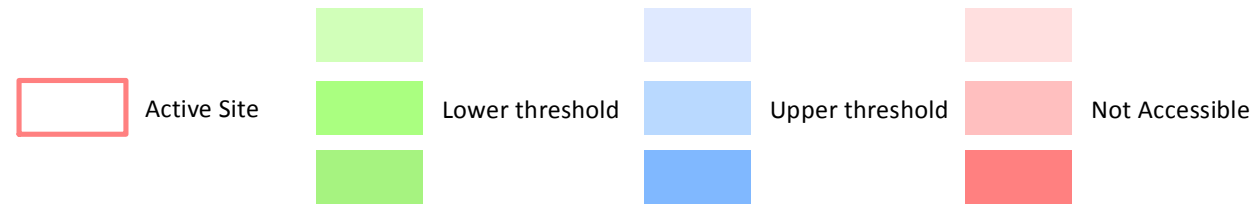
# Kirklees Council Housing Allocations - Accessibility Assessments March 2015

Public Transport Journey Time Thresholds



## Local Settlements: Netherthong

The following travel time indicators are based on the travel time to reach each destination type by public transport to a maximum of 60 minutes journey time. The assessments are based on a AM peak period.

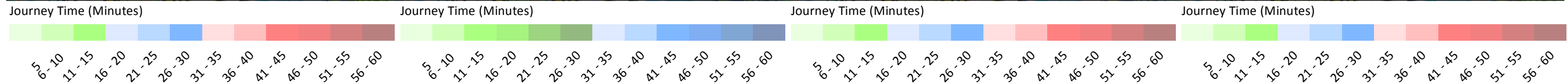
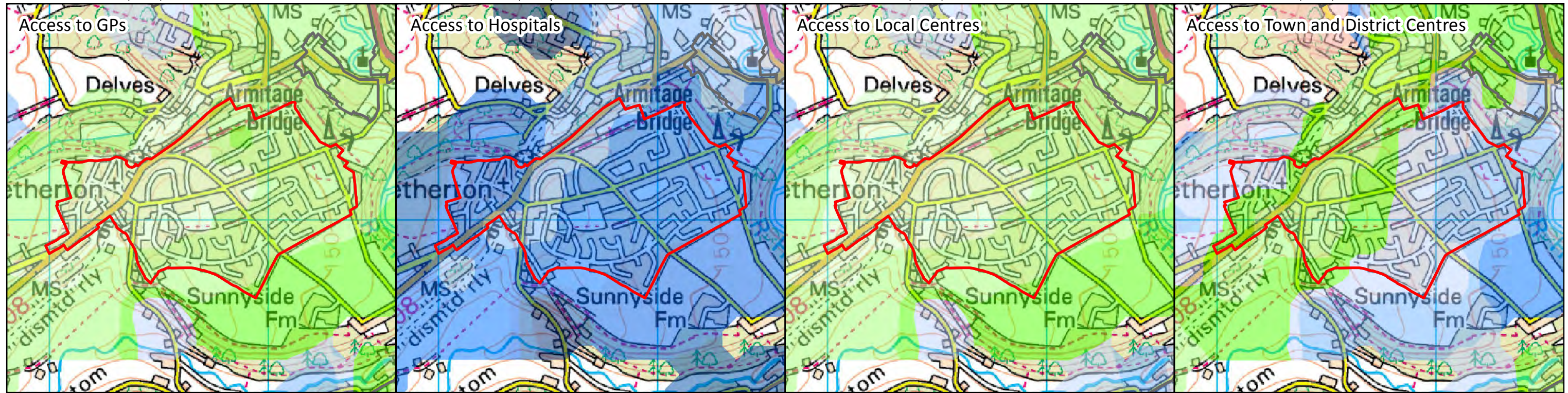
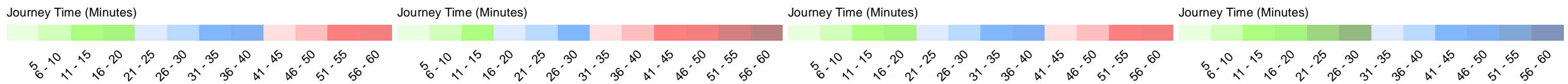
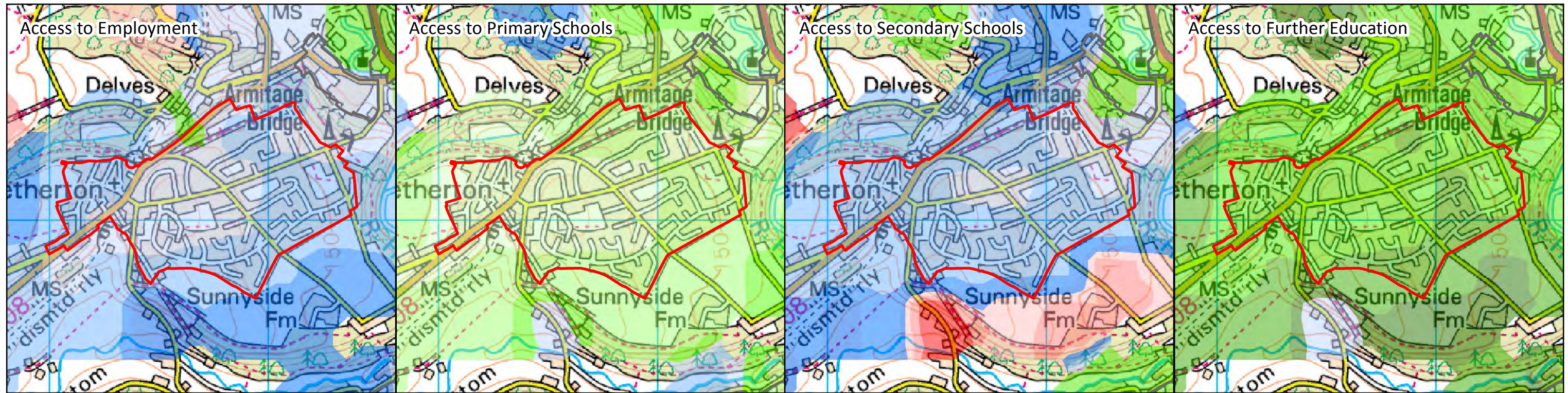
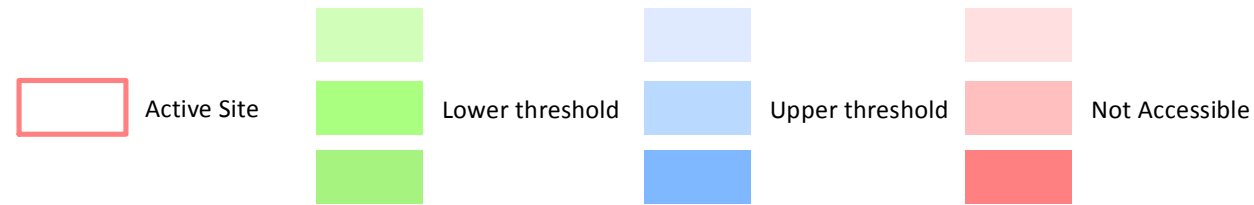


# Kirklees Council Housing Allocations - Accessibility Assessments March 2015

Public Transport Journey Time Thresholds

## Local Settlements: Netherton

The following travel time indicators are based on the travel time to reach each destination type by public transport to a maximum of 60 minutes journey time. The assessments are based on a AM peak period.



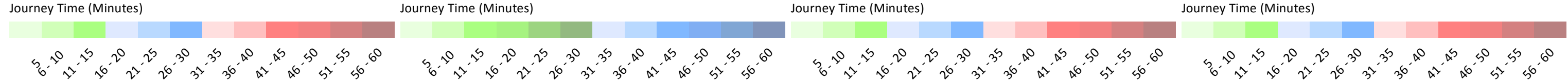
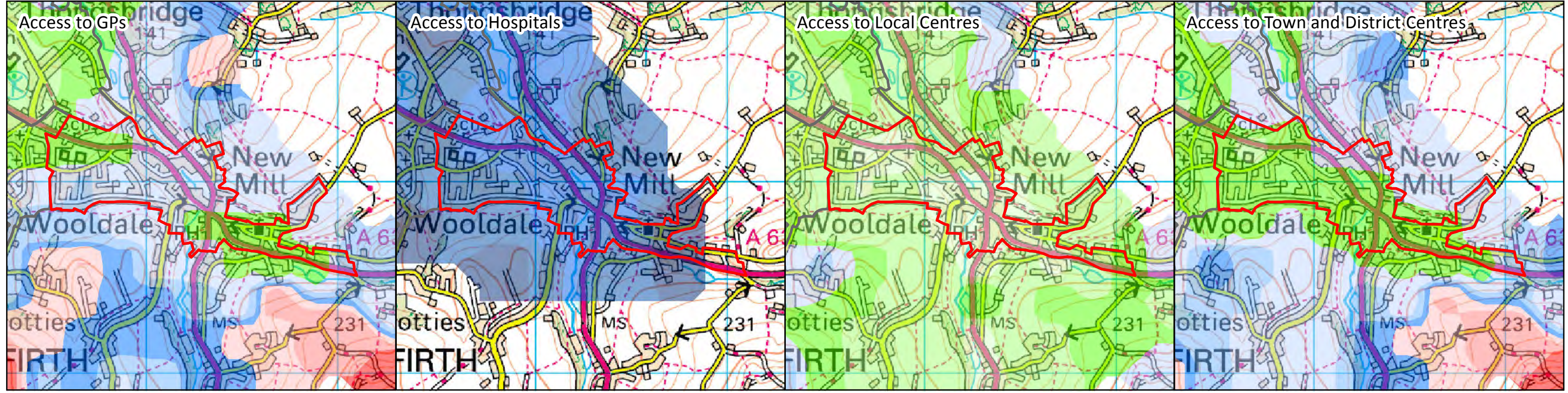
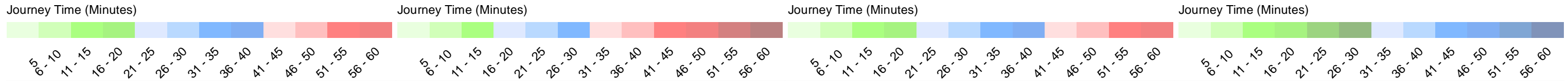
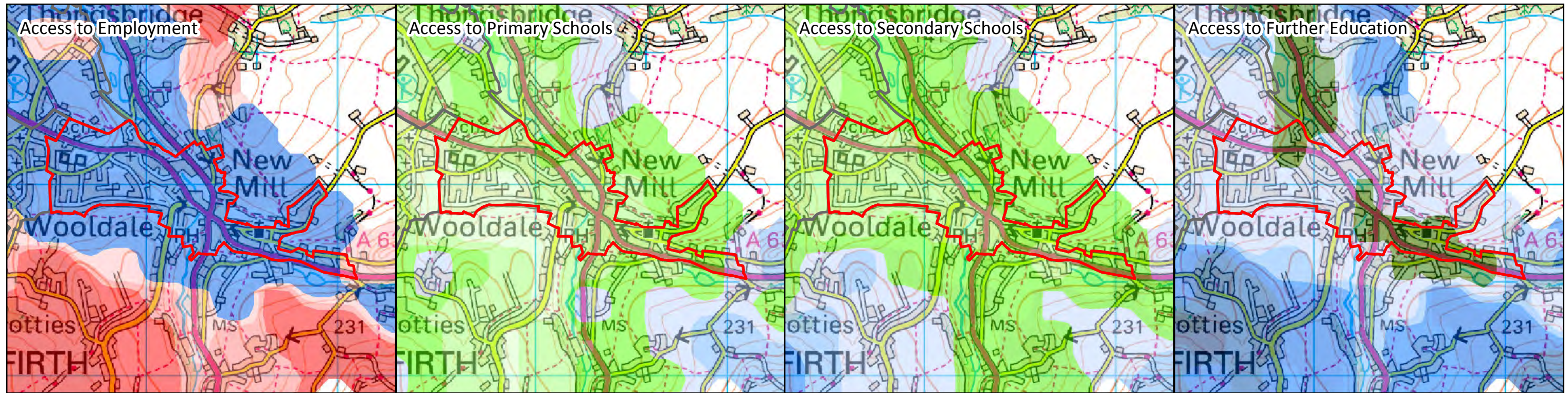
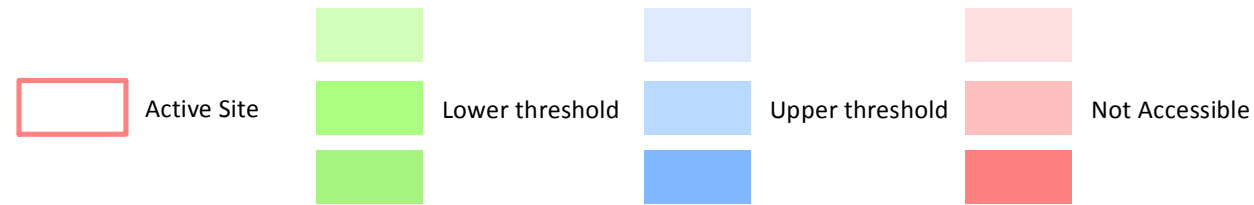
# Kirklees Council Housing Allocations - Accessibility Assessments March 2015

Public Transport Journey Time Thresholds



## Local Settlements: New Mill

The following travel time indicators are based on the travel time to reach each destination type by public transport to a maximum of 60 minutes journey time. The assessments are based on a AM peak period.

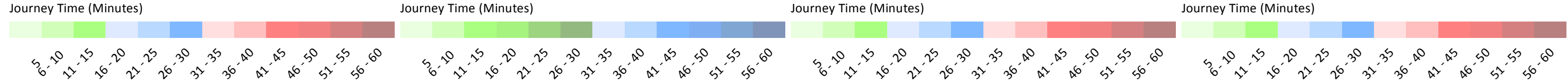
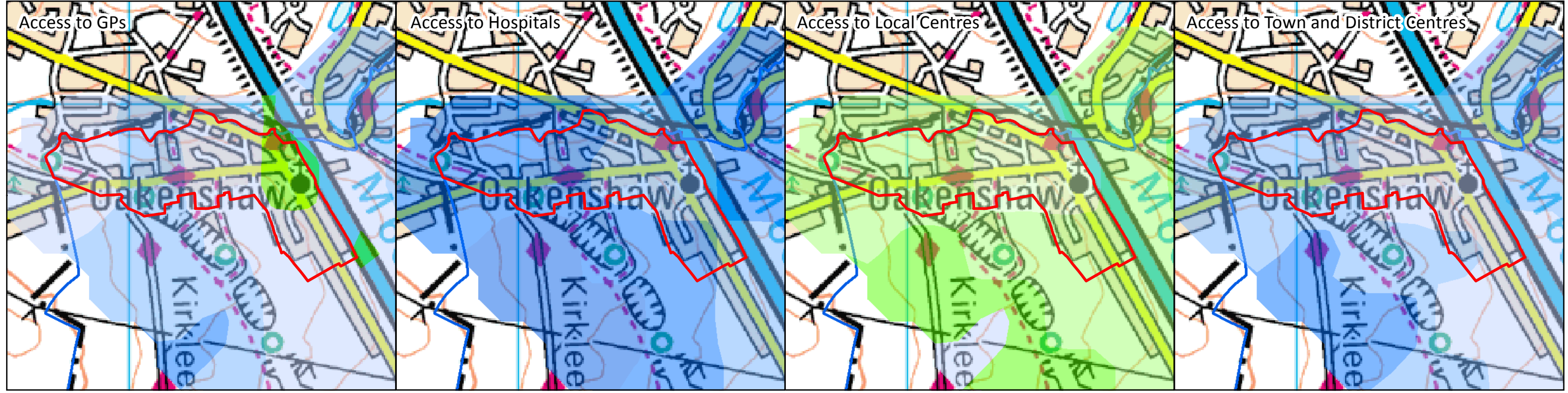
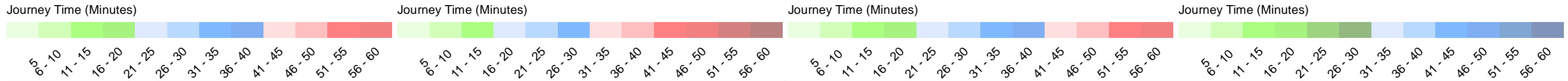
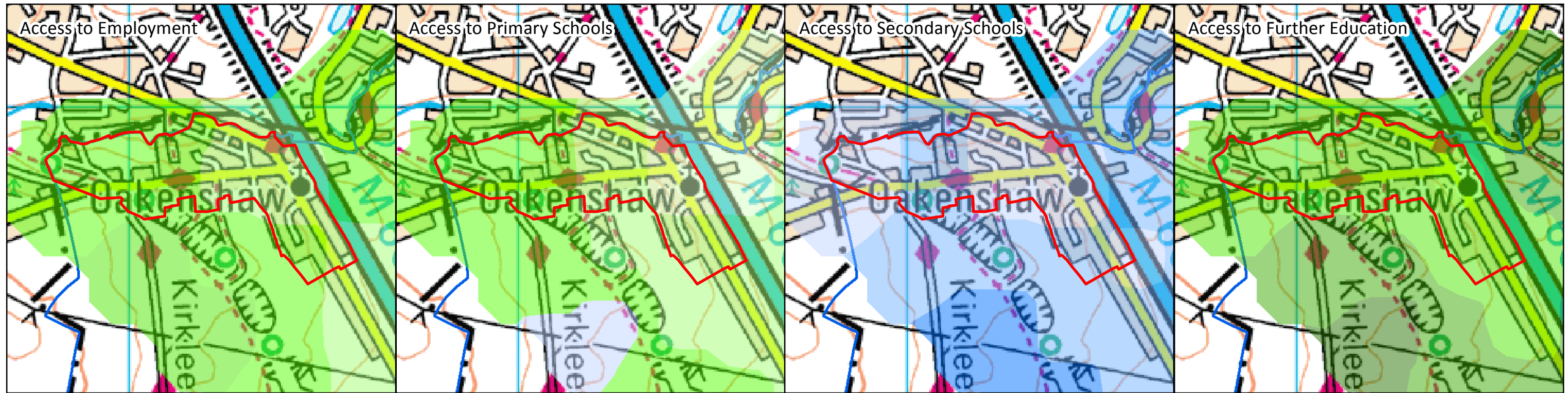
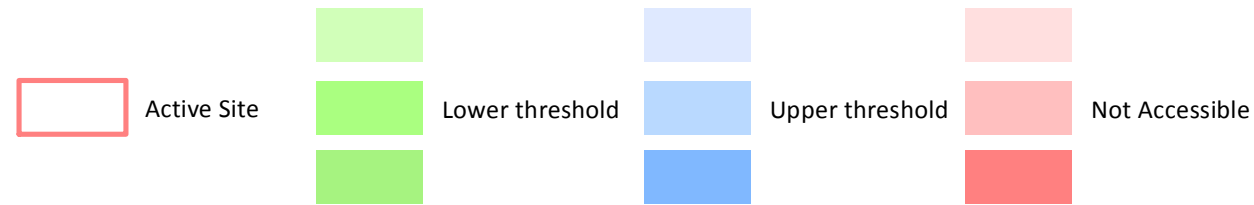


# Kirklees Council Housing Allocations - Accessibility Assessments March 2015

Public Transport Journey Time Thresholds

## Local Settlements: Oakenshaw

The following travel time indicators are based on the travel time to reach each destination type by public transport to a maximum of 60 minutes journey time. The assessments are based on a AM peak period.



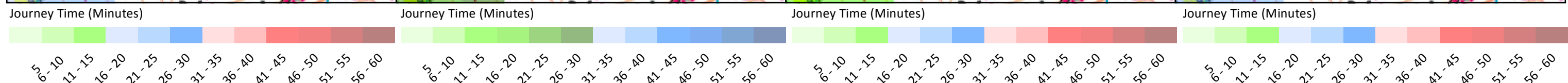
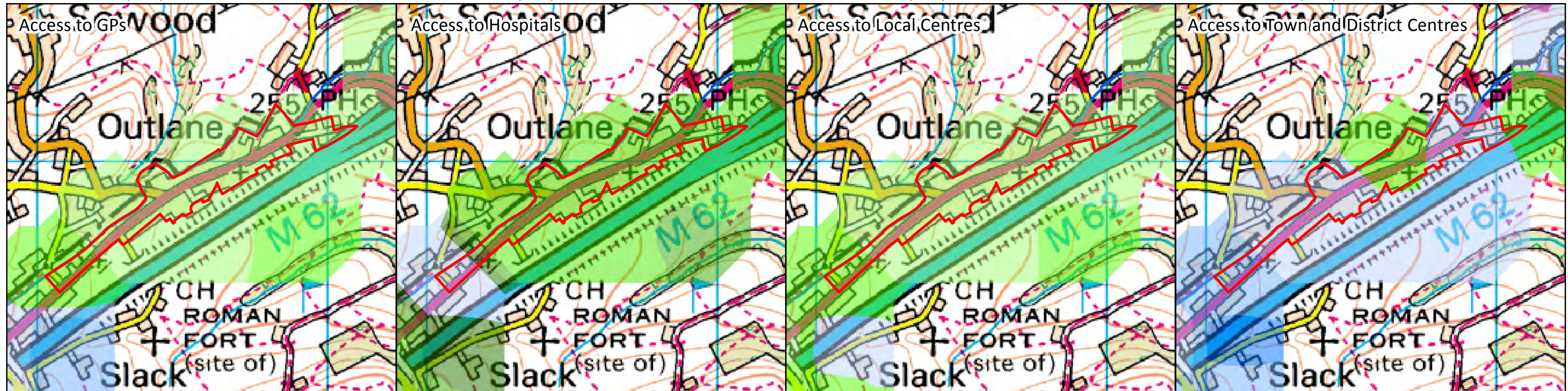
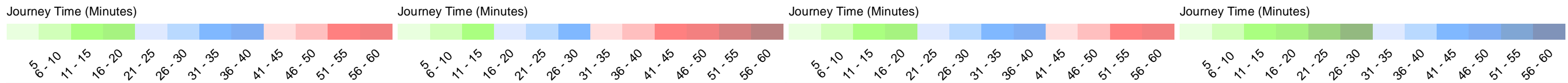
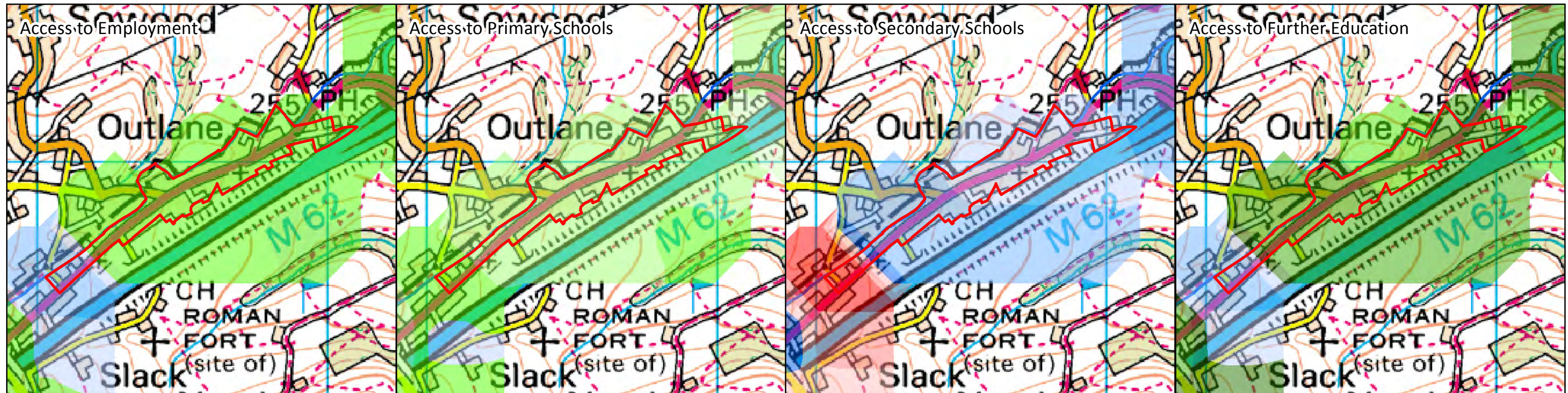
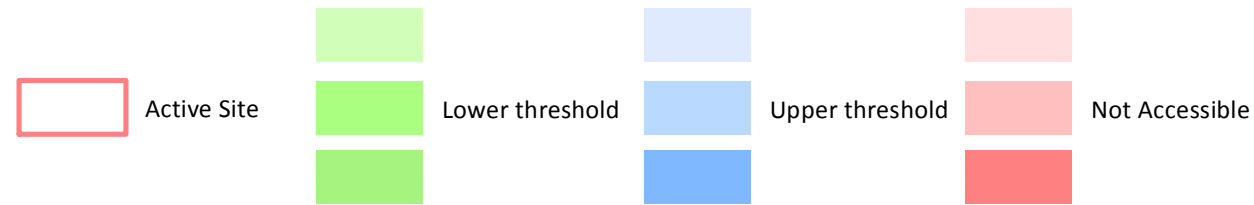
# Kirklees Council Housing Allocations - Accessibility Assessments March 2015

Public Transport Journey Time Thresholds



## Local Settlements: Outlane

The following travel time indicators are based on the travel time to reach each destination type by public transport to a maximum of 60 minutes journey time. The assessments are based on a AM peak period.





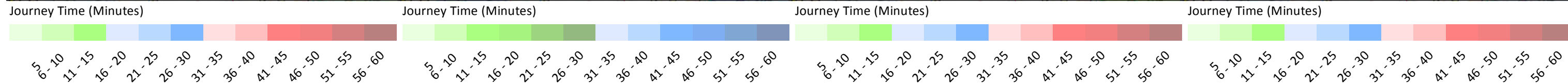
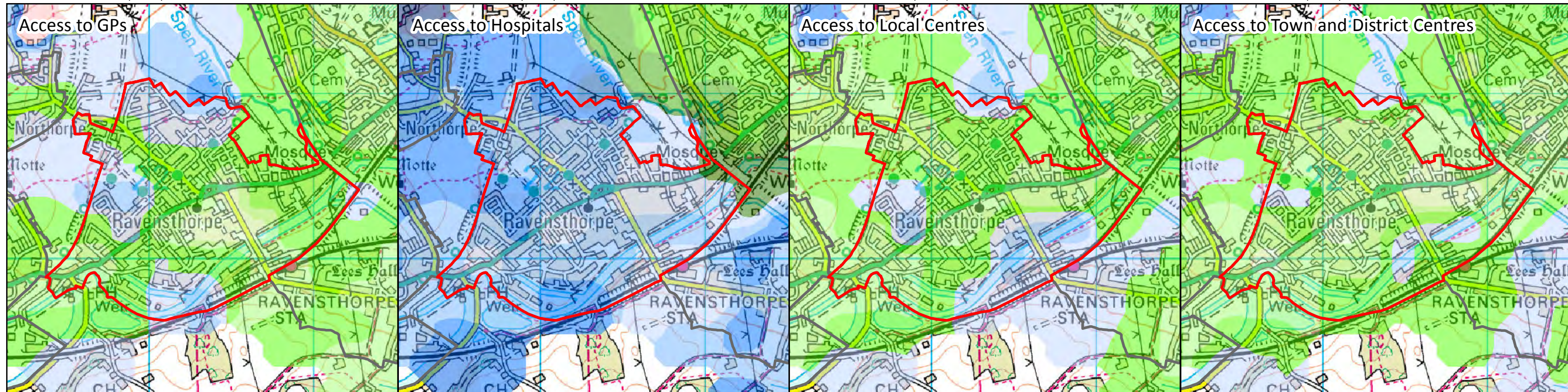
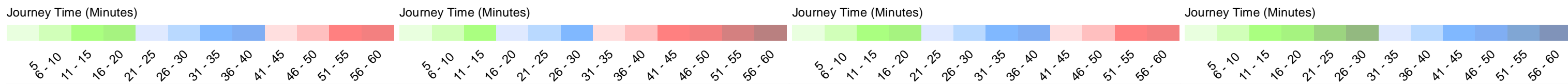
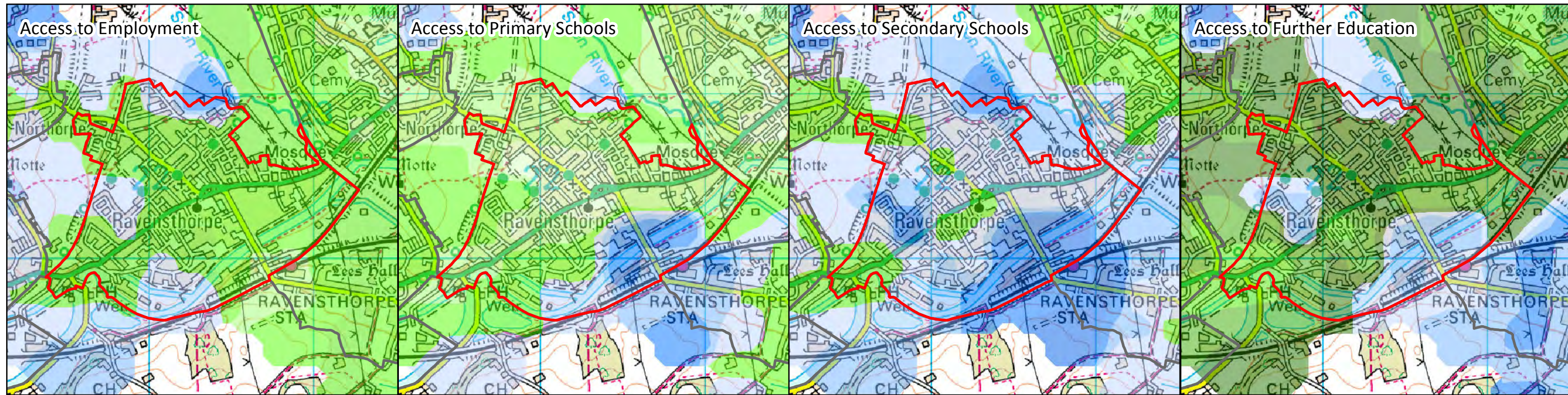
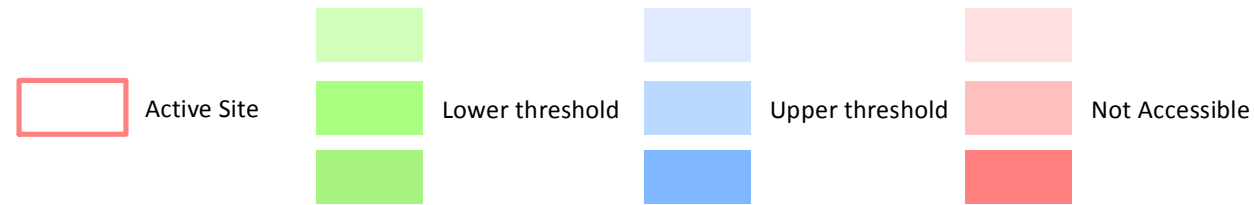
# Kirklees Council Housing Allocations - Accessibility Assessments March 2015

Public Transport Journey Time Thresholds



## Local Settlements: Ravensthorpe

The following travel time indicators are based on the travel time to reach each destination type by public transport to a maximum of 60 minutes journey time. The assessments are based on a AM peak period.



# Kirklees Council Housing Allocations - Accessibility Assessments March 2015

Public Transport Journey Time Thresholds



## Local Settlements: Roberttown

The following travel time indicators are based on the travel time to reach each destination type by public transport to a maximum of 60 minutes journey time. The assessments are based on a AM peak period.

