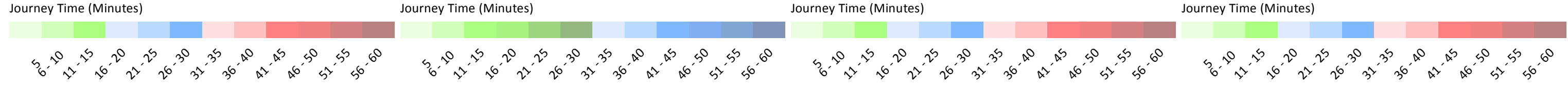
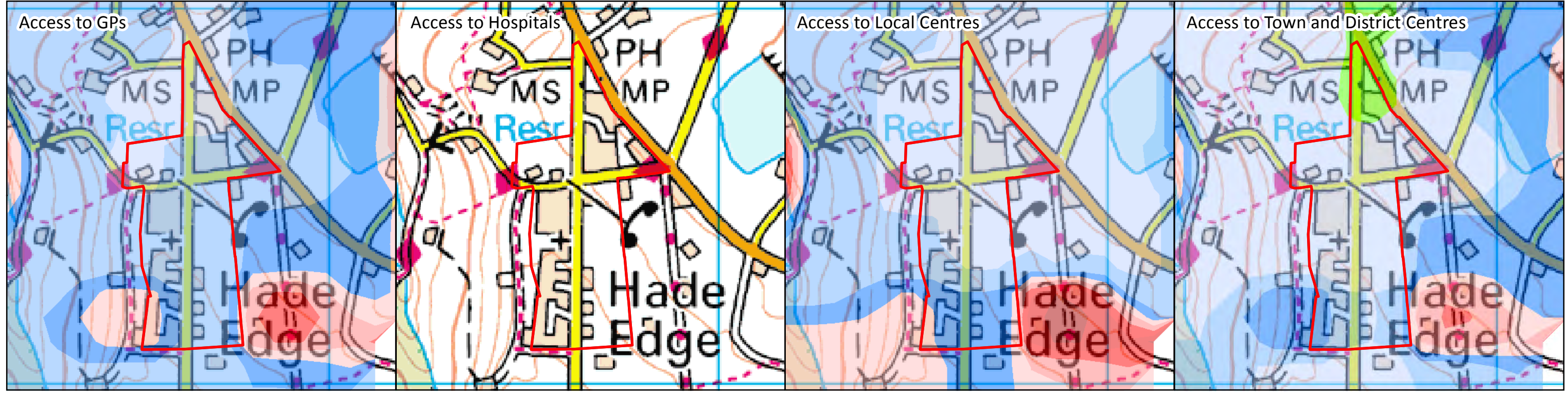
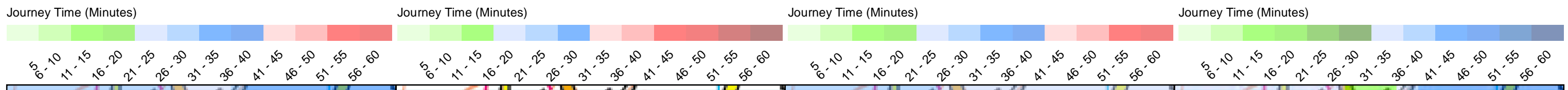
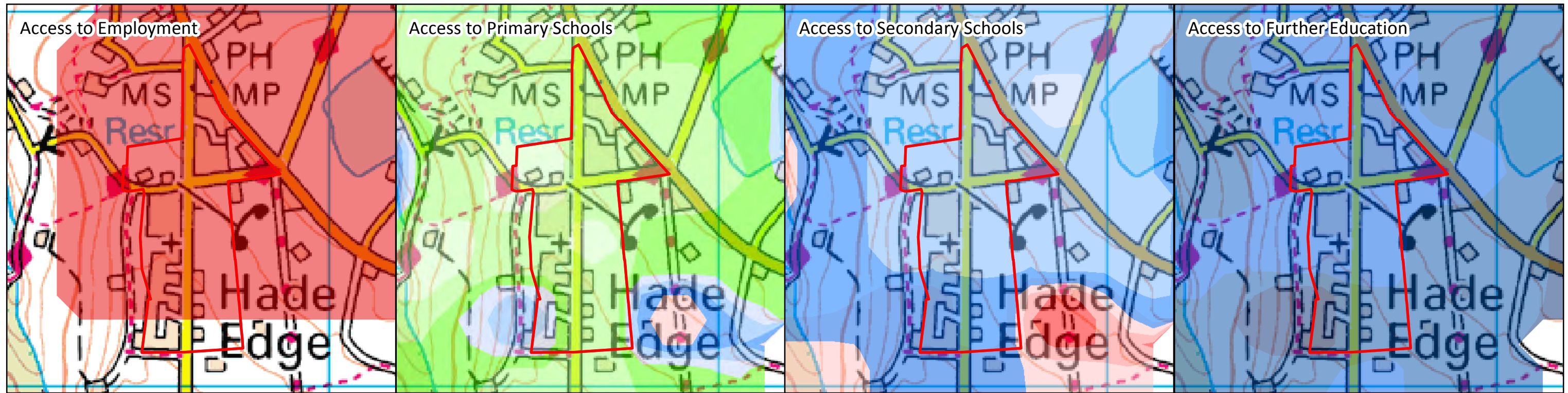
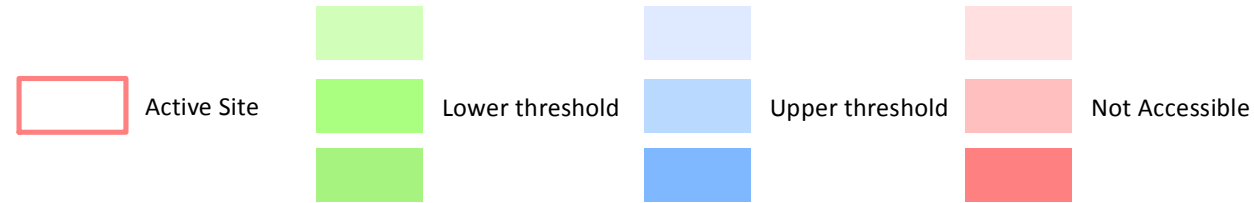


Kirklees Council Housing Allocations - Accessibility Assessments March 2015

Public Transport Journey Time Thresholds

Local Settlements: Hade Edge

The following travel time indicators are based on the travel time to reach each destination type by public transport to a maximum of 60 minutes journey time. The assessments are based on a AM peak period.



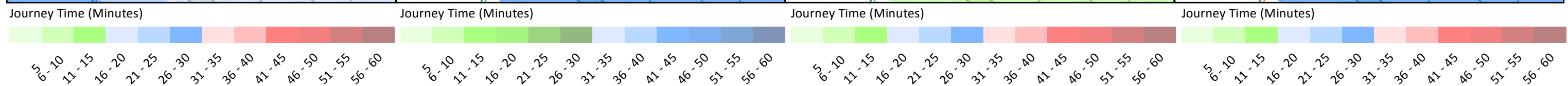
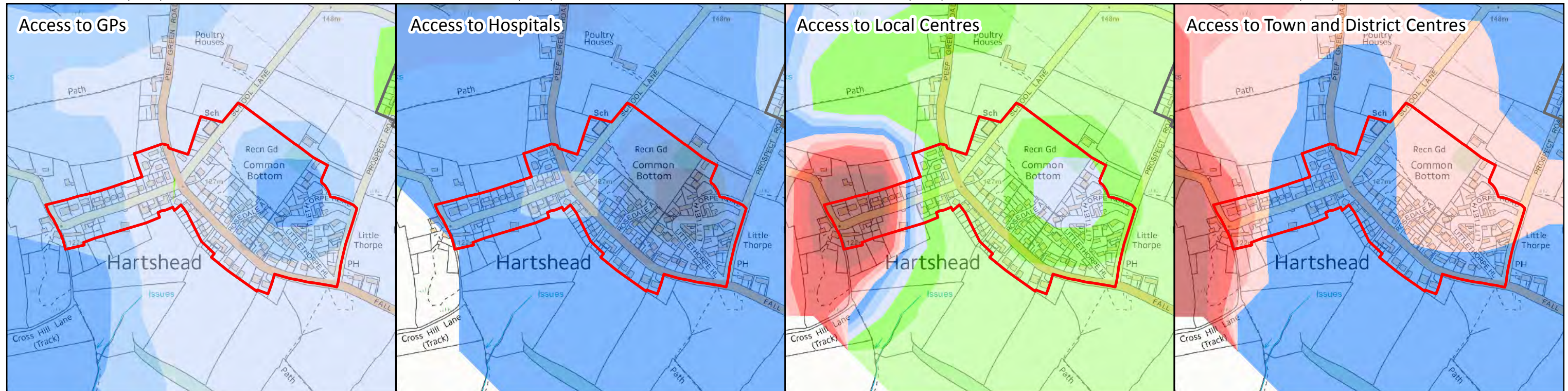
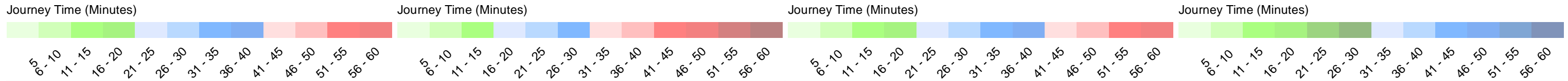
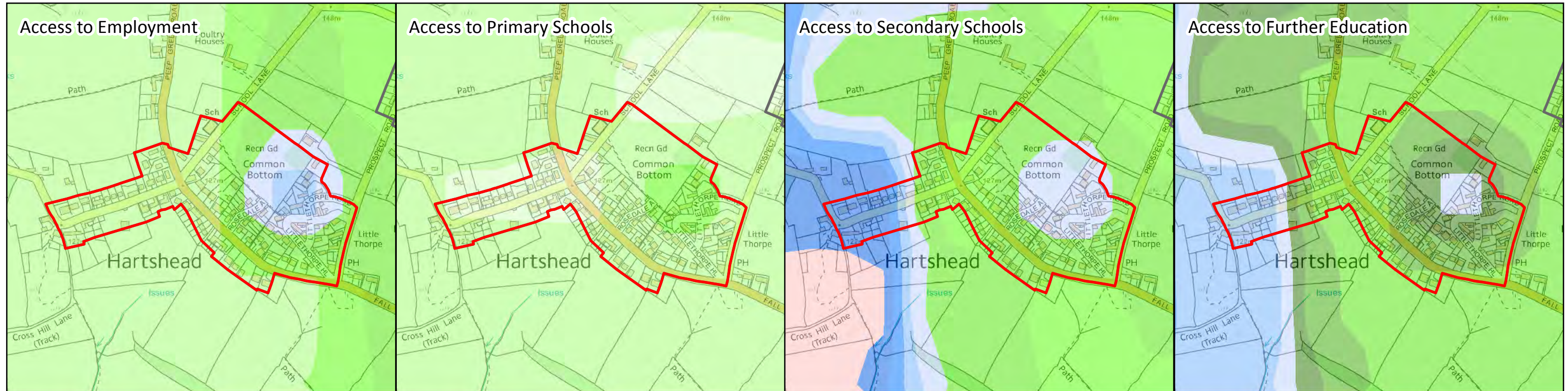
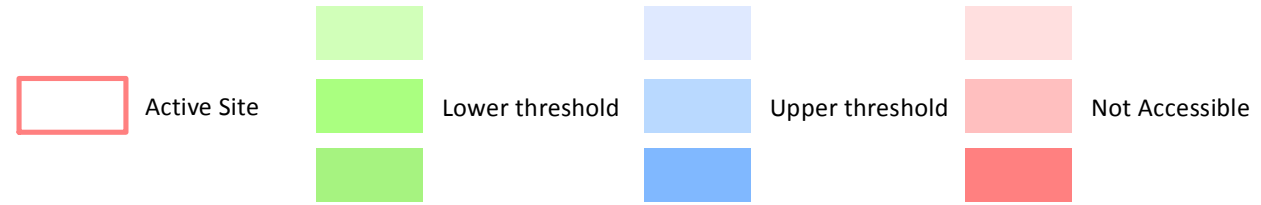
Kirklees Council Housing Allocations - Accessibility Assessments March 2015

Public Transport Journey Time Thresholds



Local Settlements: Hartshead

The following travel time indicators are based on the travel time to reach each destination type by public transport to a maximum of 60 minutes journey time. The assessments are based on a AM peak period.

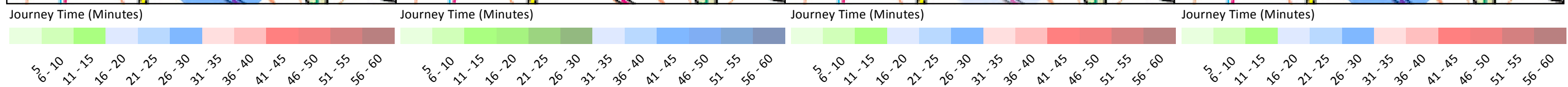
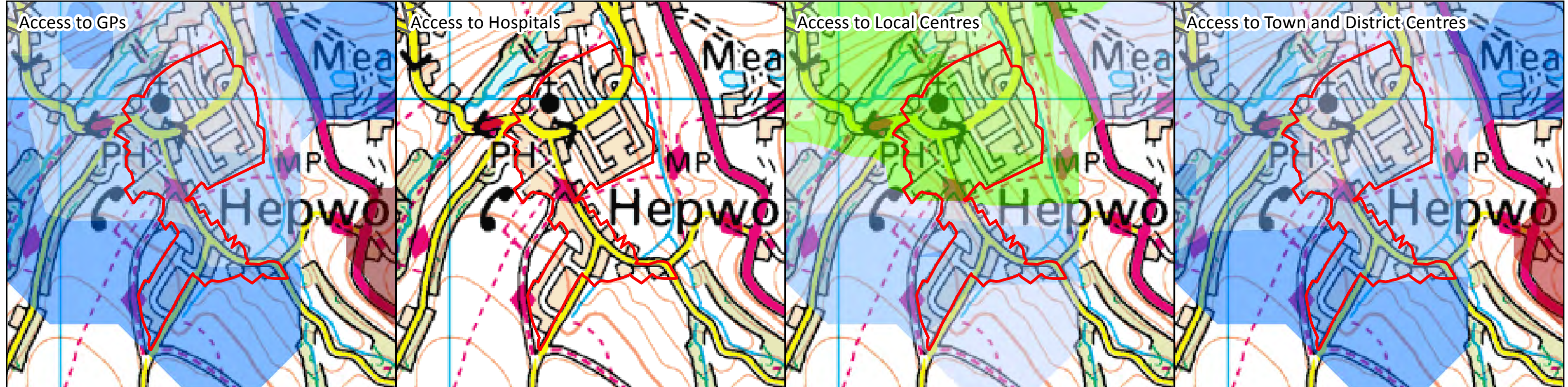
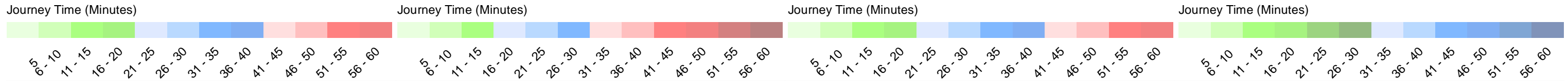
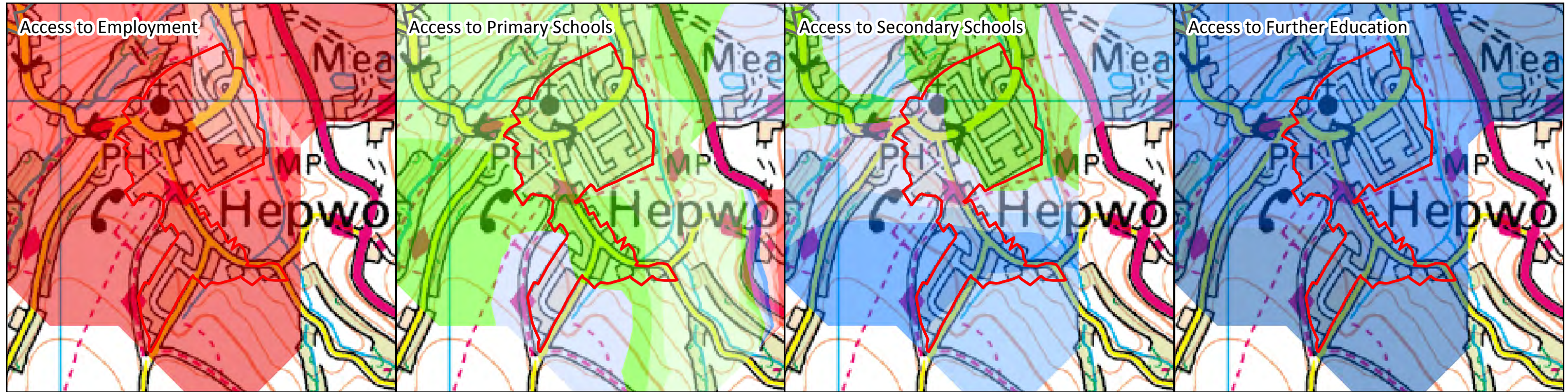
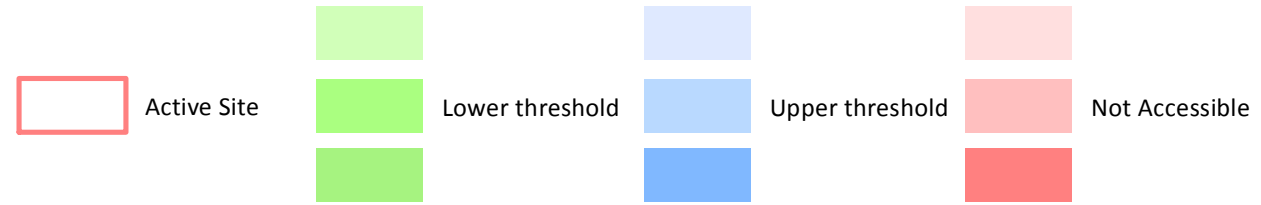


Kirklees Council Housing Allocations - Accessibility Assessments March 2015

Public Transport Journey Time Thresholds

Local Settlements: Hepworth

The following travel time indicators are based on the travel time to reach each destination type by public transport to a maximum of 60 minutes journey time. The assessments are based on a AM peak period.



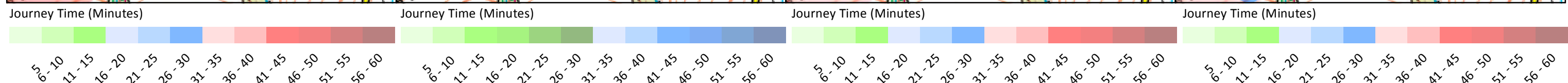
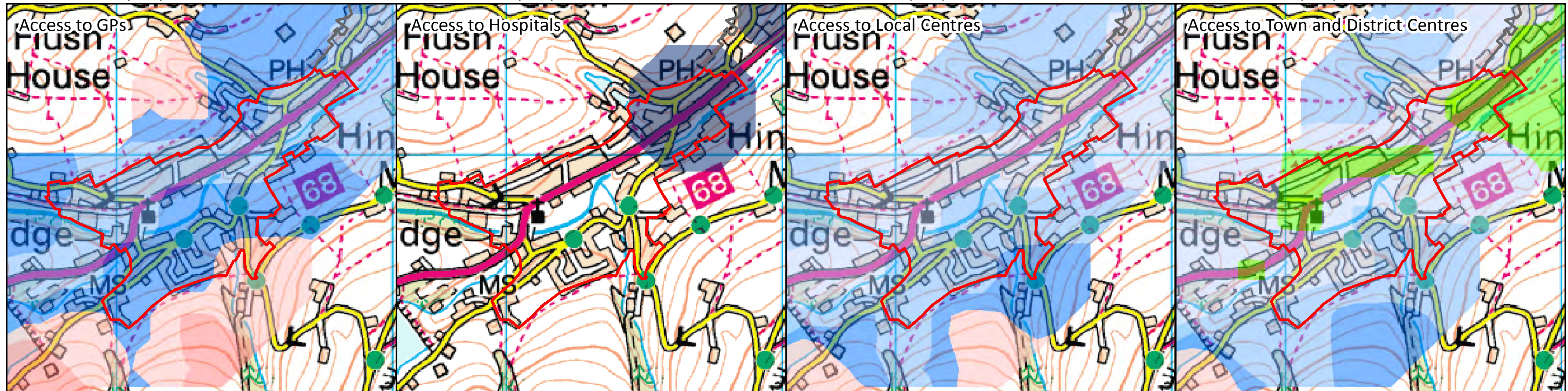
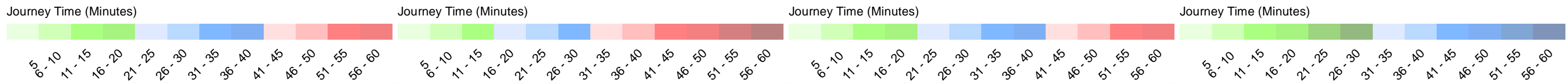
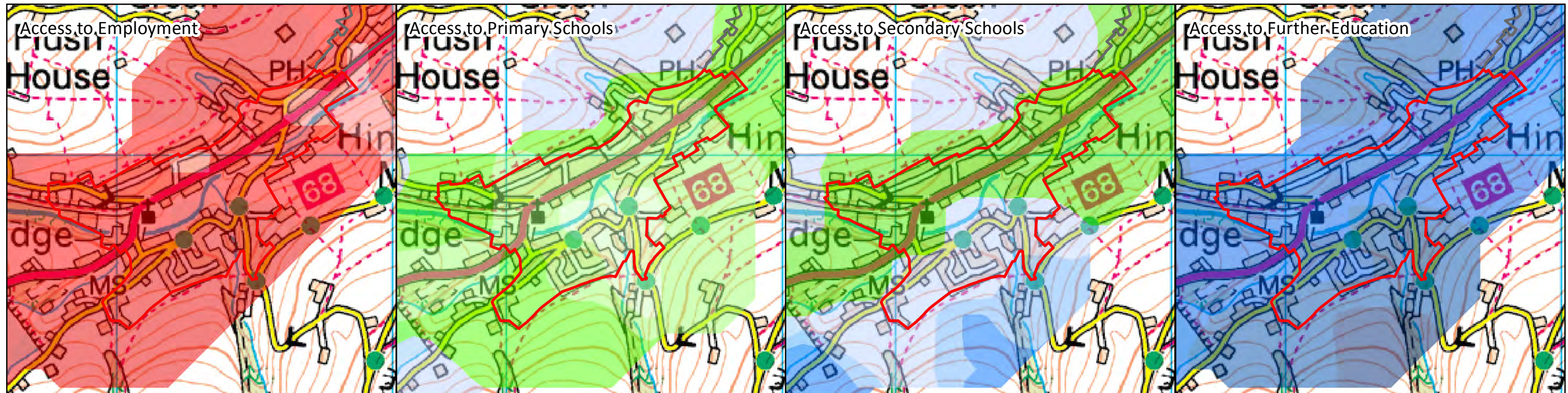
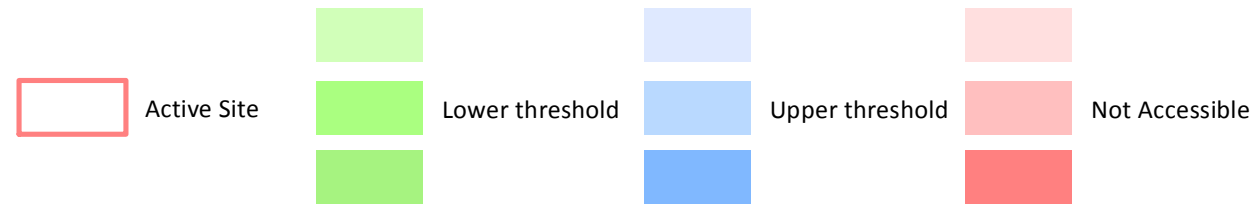
Kirklees Council Housing Allocations - Accessibility Assessments March 2015

Public Transport Journey Time Thresholds



Local Settlements: Holmbridge

The following travel time indicators are based on the travel time to reach each destination type by public transport to a maximum of 60 minutes journey time. The assessments are based on a AM peak period.



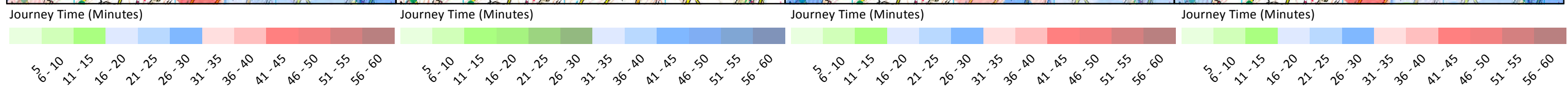
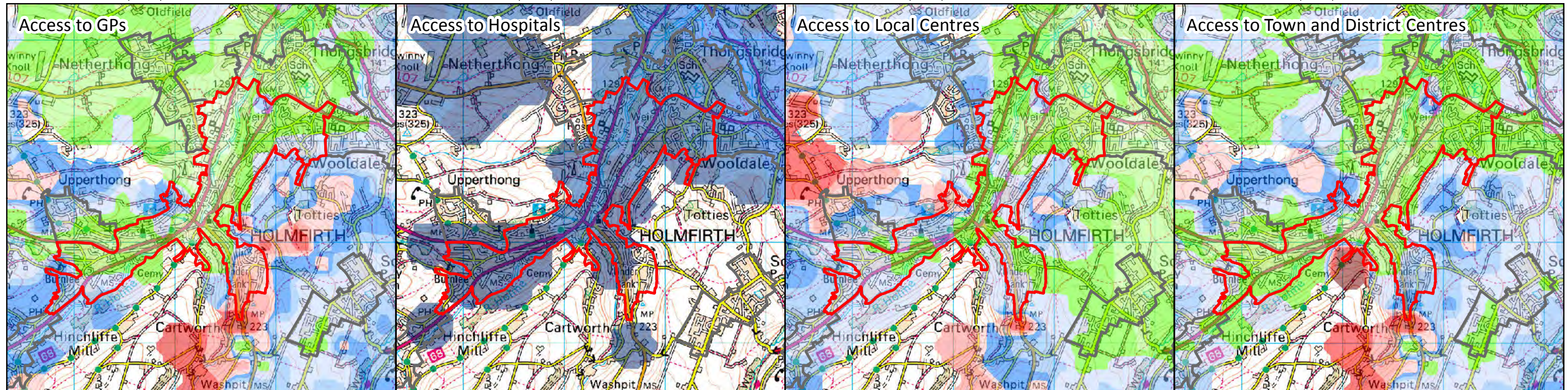
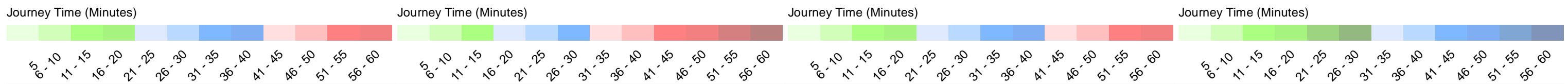
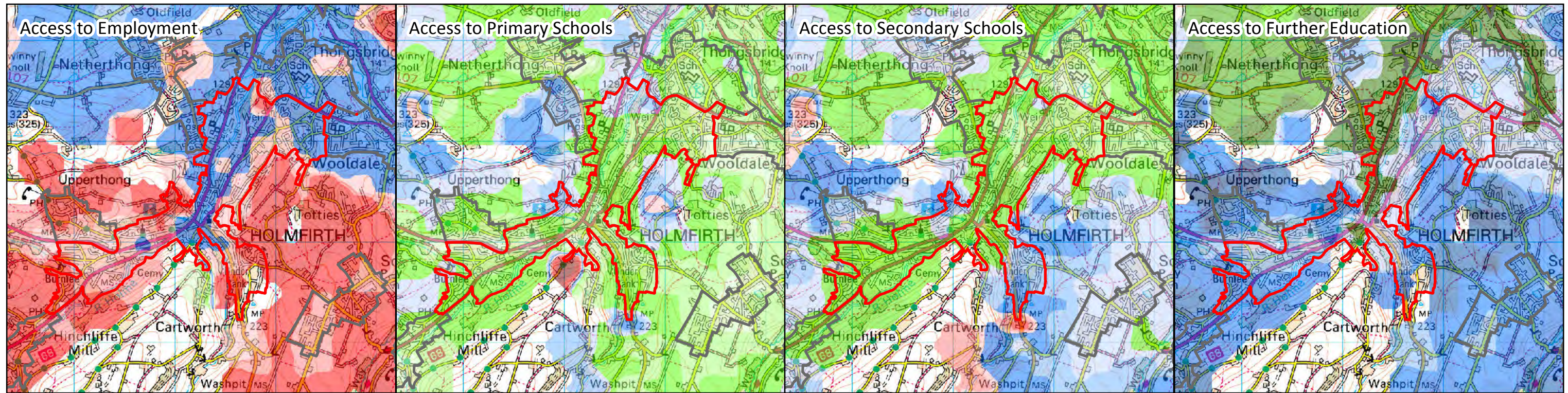
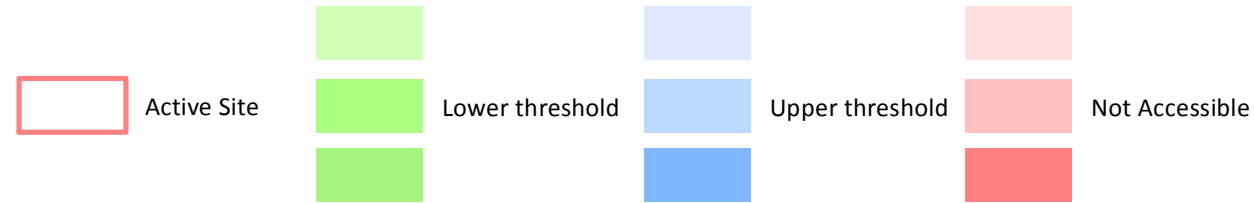
Kirklees Council Housing Allocations - Accessibility Assessments March 2015

Public Transport Journey Time Thresholds



Local Settlements: Holmfirth

The following travel time indicators are based on the travel time to reach each destination type by public transport to a maximum of 60 minutes journey time. The assessments are based on a AM peak period.

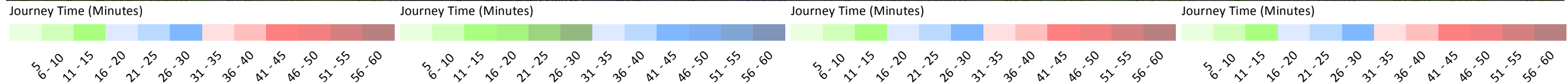
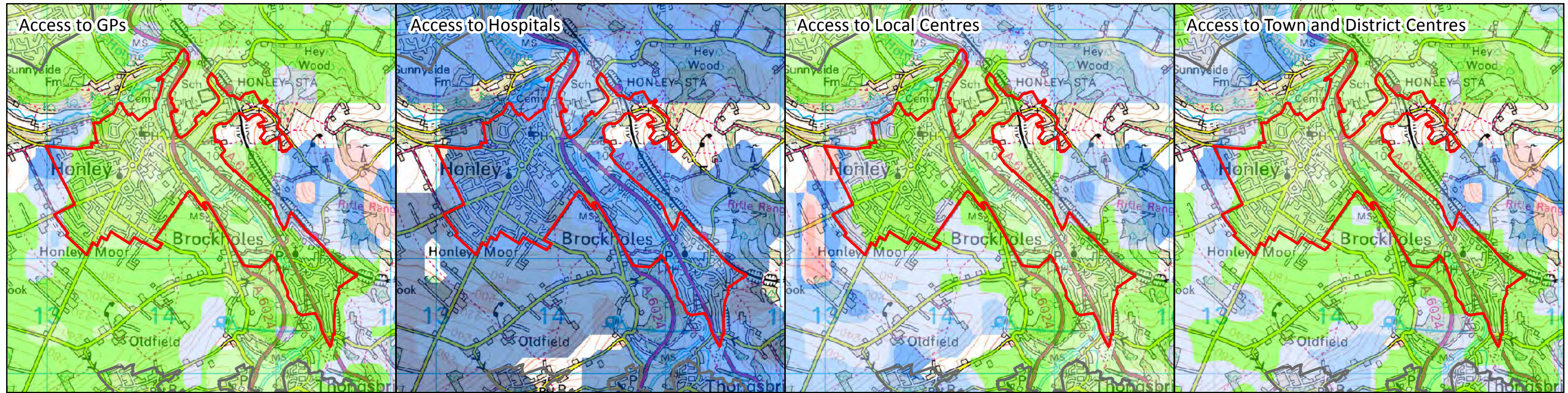
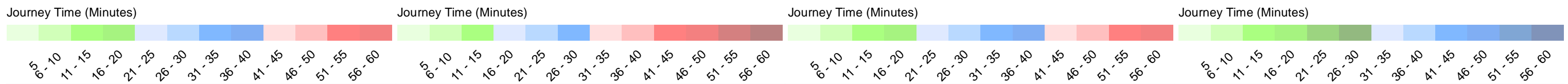
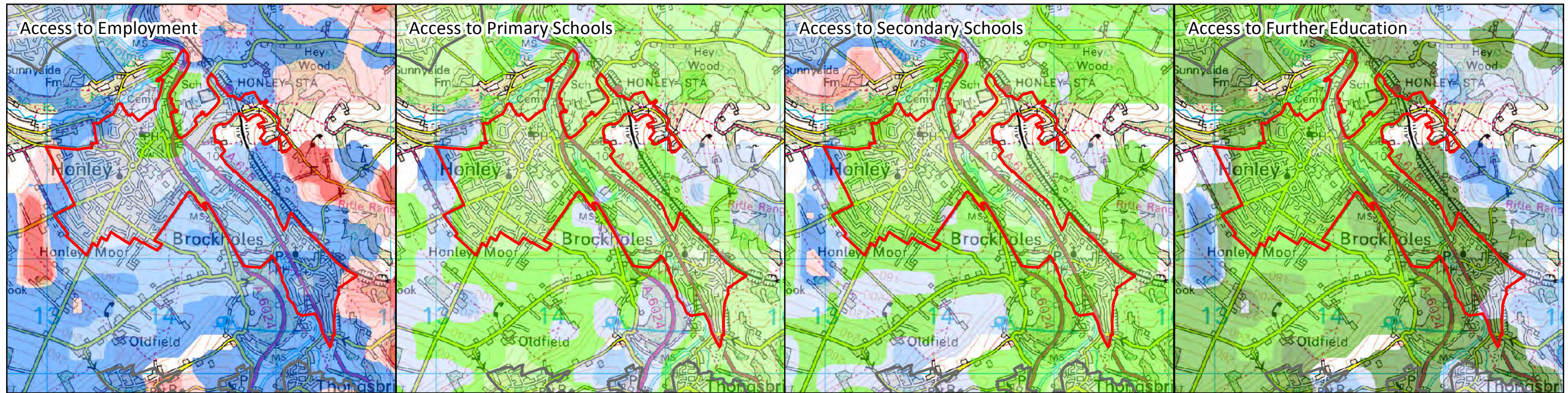
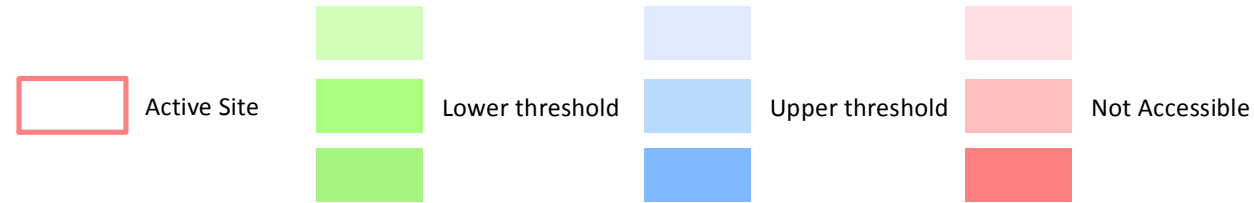


Kirklees Council Housing Allocations - Accessibility Assessments March 2015

Public Transport Journey Time Thresholds

Local Settlements: Honley/Brockholes

The following travel time indicators are based on the travel time to reach each destination type by public transport to a maximum of 60 minutes journey time. The assessments are based on a AM peak period.



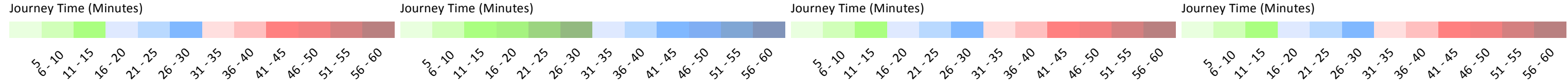
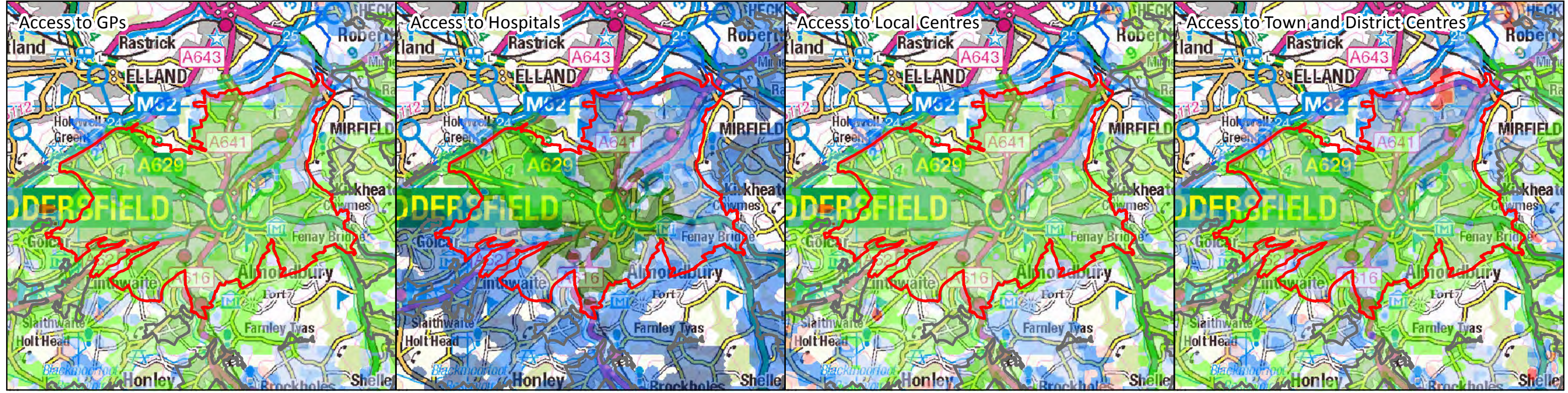
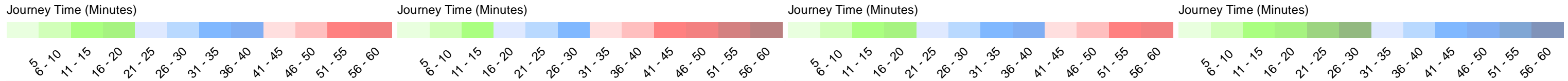
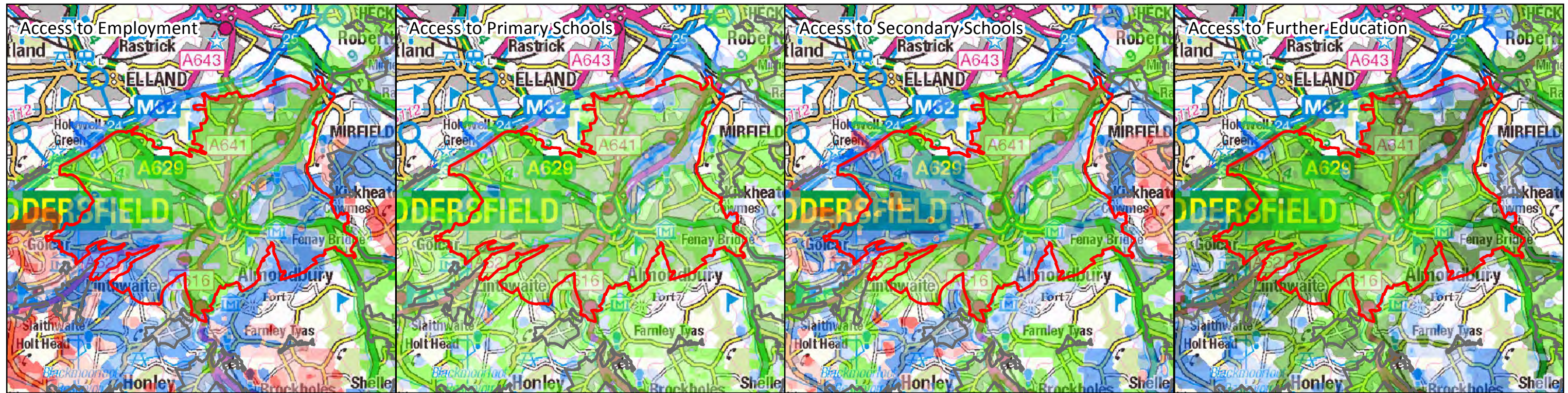
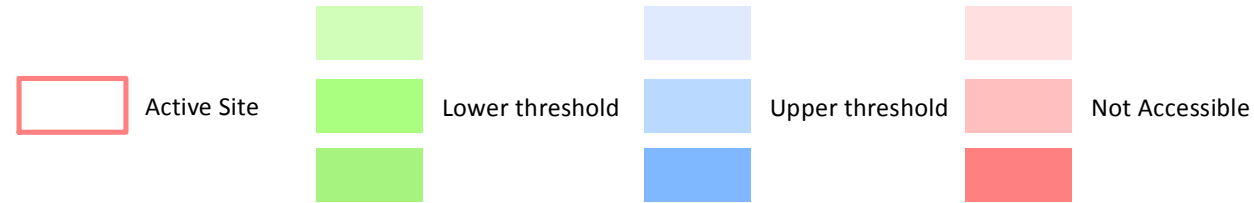
Kirklees Council Housing Allocations - Accessibility Assessments March 2015

Public Transport Journey Time Thresholds



Local Settlements: Huddersfield

The following travel time indicators are based on the travel time to reach each destination type by public transport to a maximum of 60 minutes journey time. The assessments are based on a AM peak period.



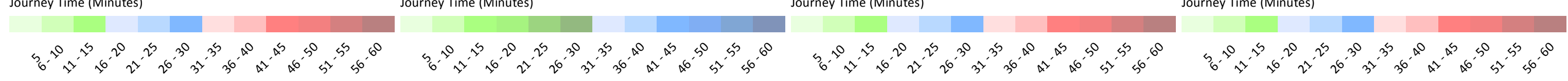
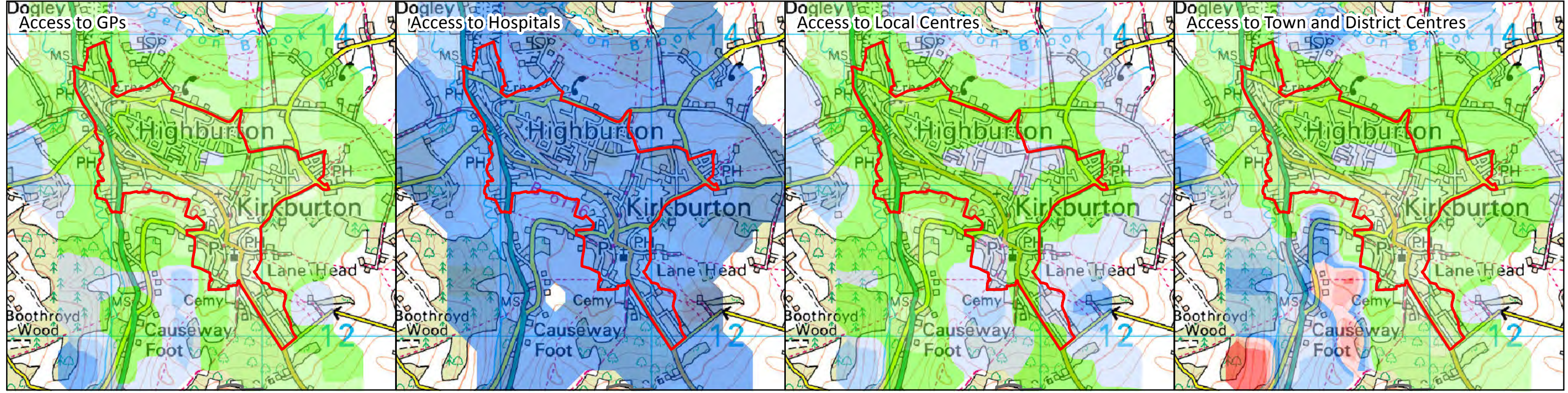
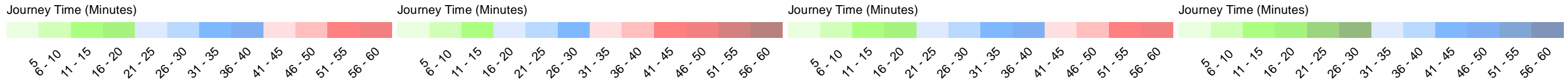
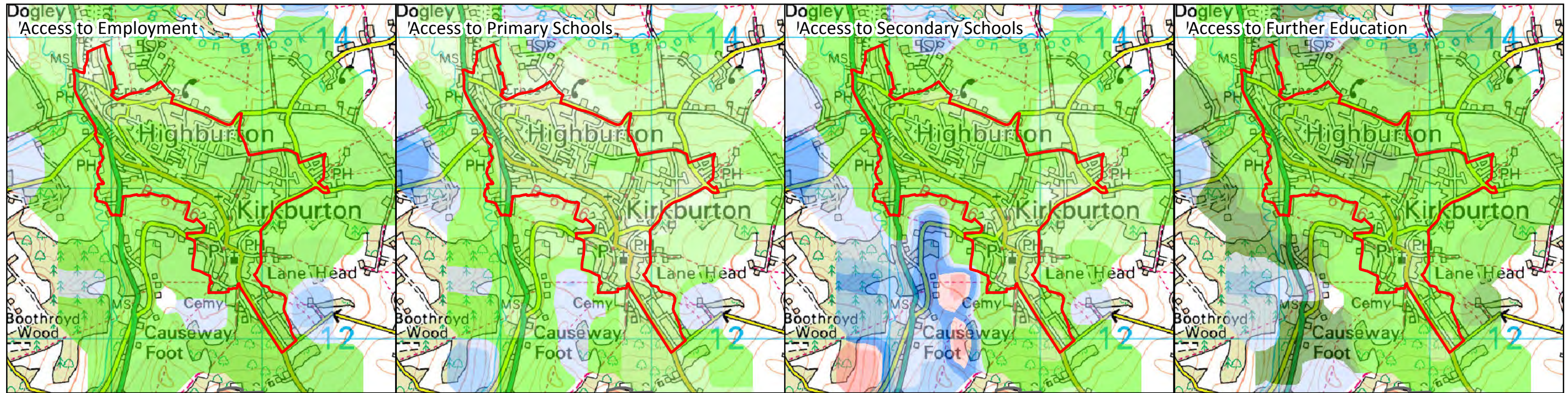
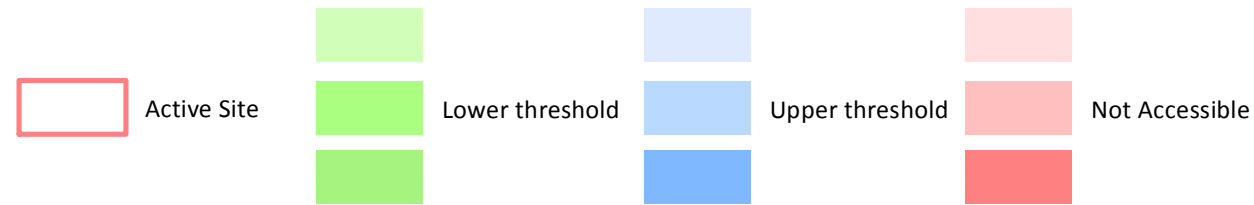
Kirklees Council Housing Allocations - Accessibility Assessments March 2015

Public Transport Journey Time Thresholds



Local Settlements: Kirkburton/Highburton

The following travel time indicators are based on the travel time to reach each destination type by public transport to a maximum of 60 minutes journey time. The assessments are based on a AM peak period.

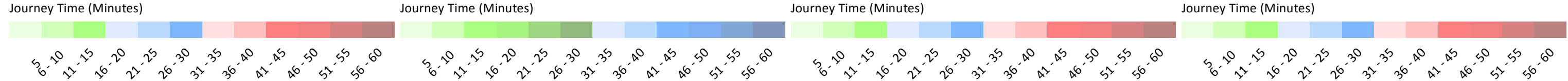
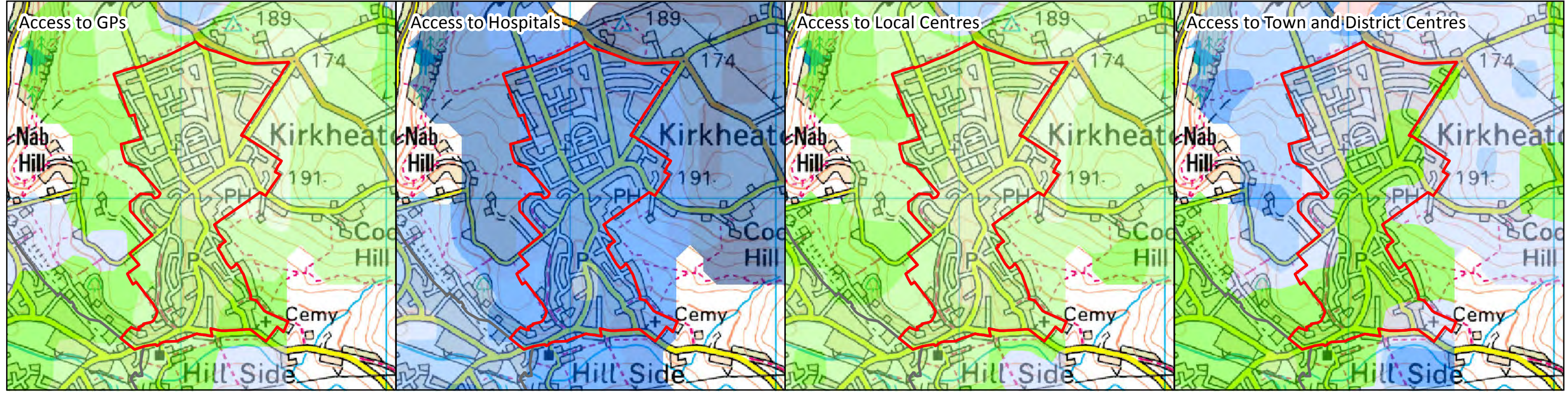
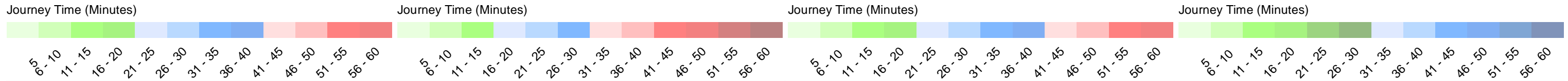
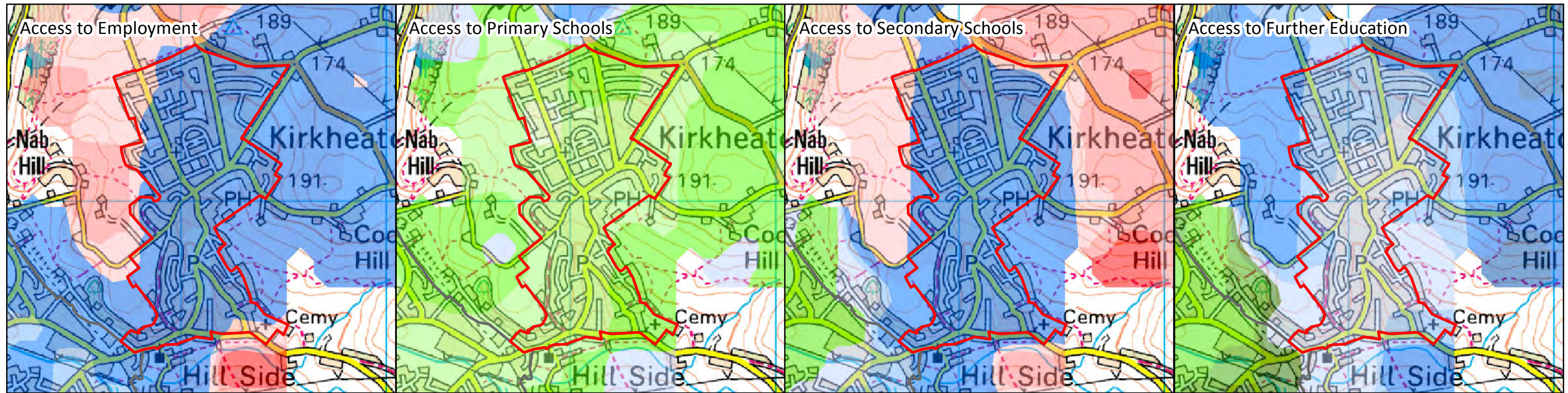
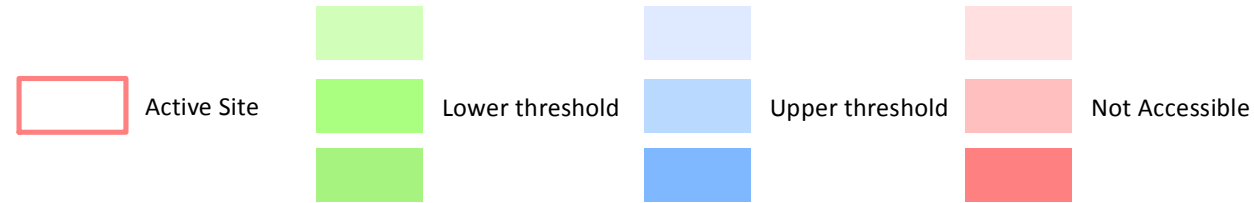


Kirklees Council Housing Allocations - Accessibility Assessments March 2015

Public Transport Journey Time Thresholds

Local Settlements: Kirkheaton

The following travel time indicators are based on the travel time to reach each destination type by public transport to a maximum of 60 minutes journey time. The assessments are based on a AM peak period.

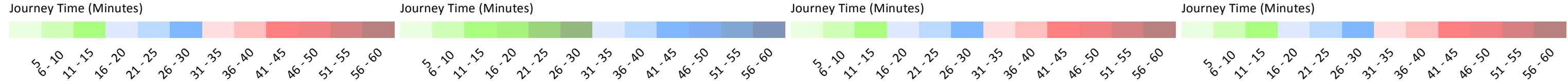
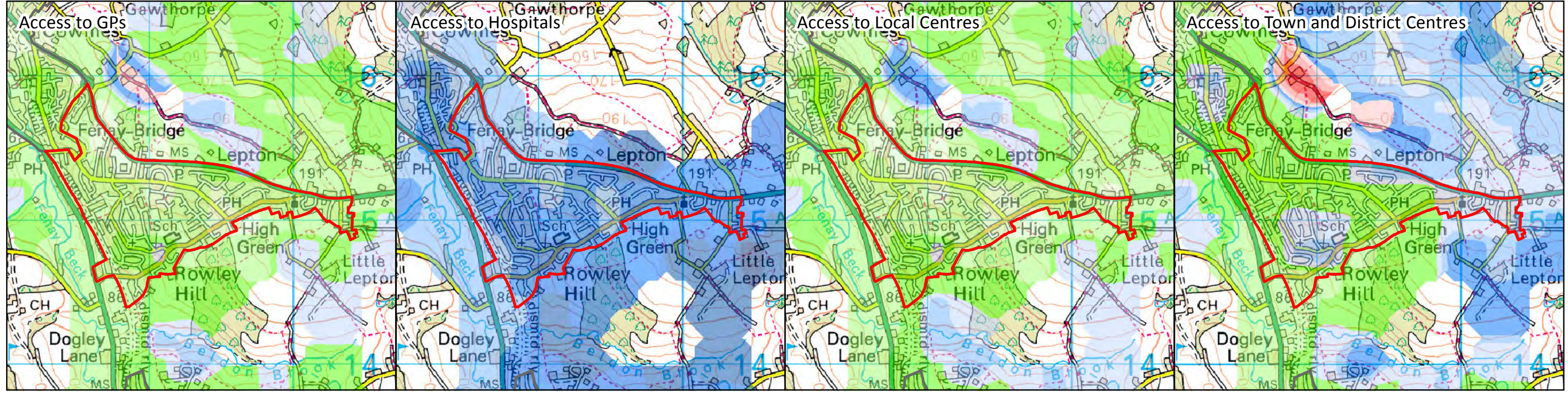
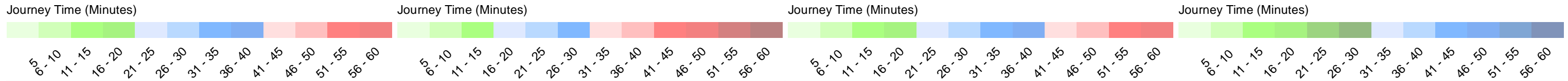
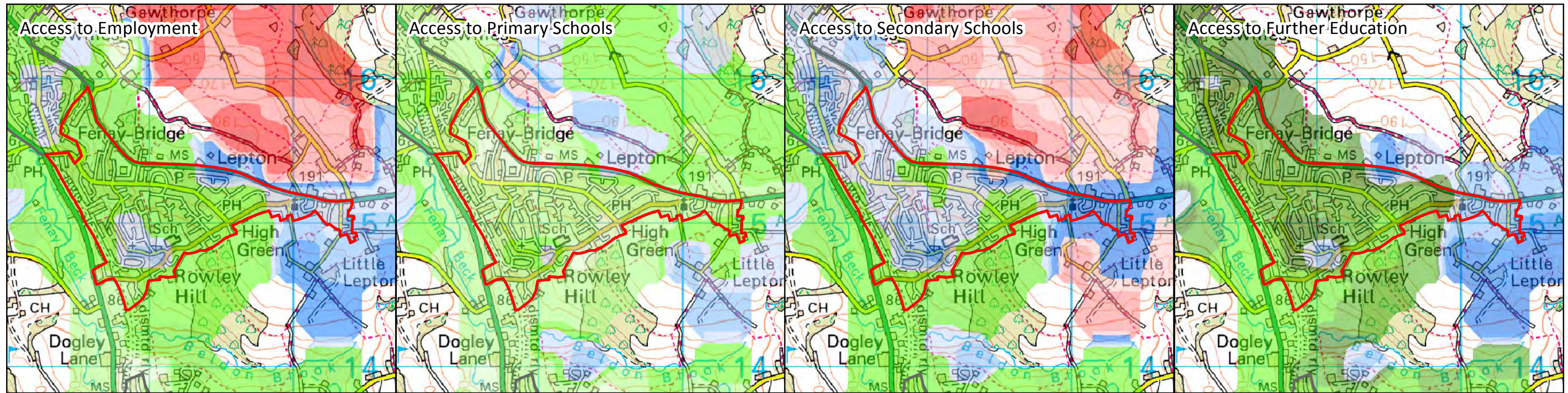
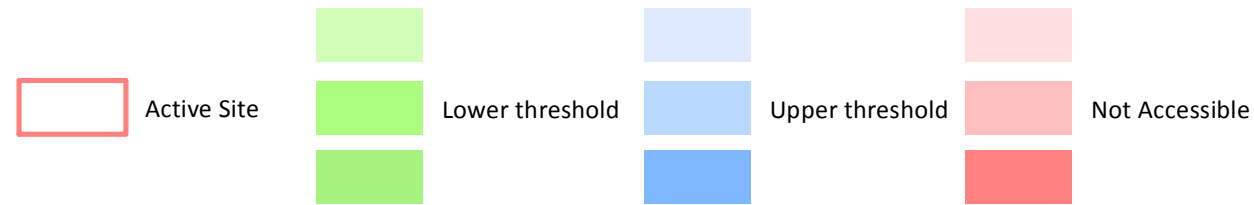


Kirklees Council Housing Allocations - Accessibility Assessments March 2015

Public Transport Journey Time Thresholds

Local Settlements: Lepton

The following travel time indicators are based on the travel time to reach each destination type by public transport to a maximum of 60 minutes journey time. The assessments are based on a AM peak period.

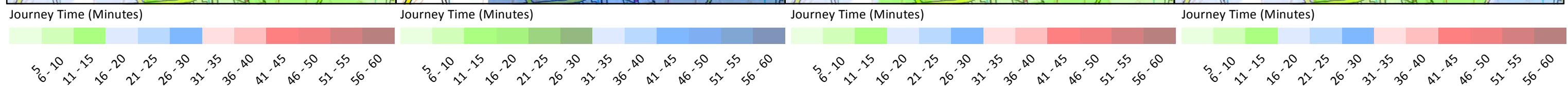
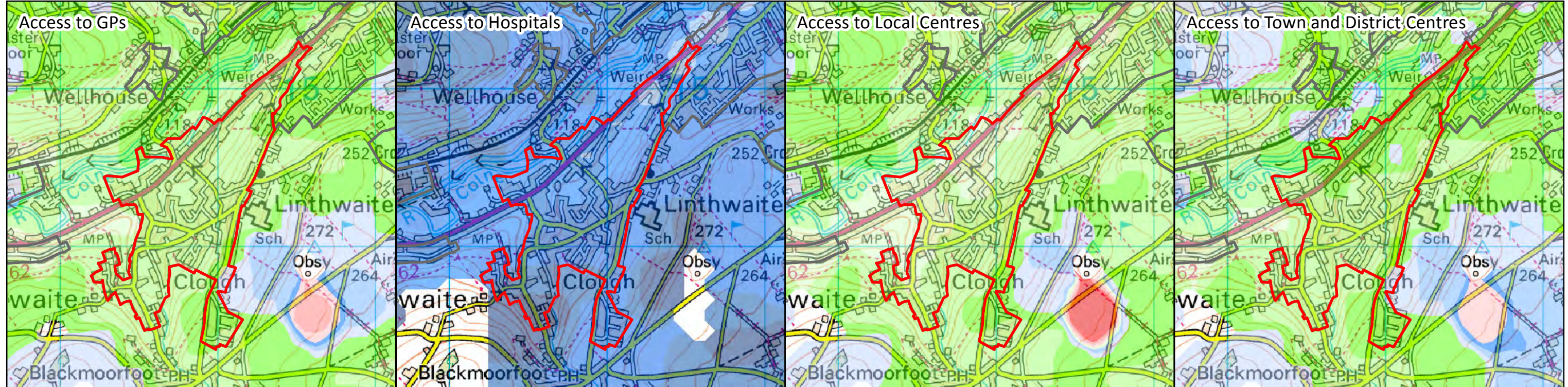
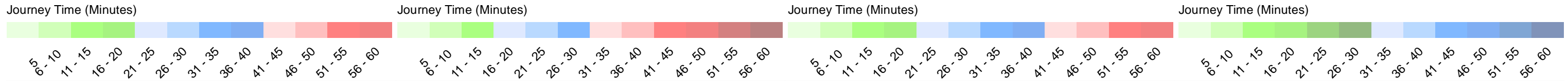
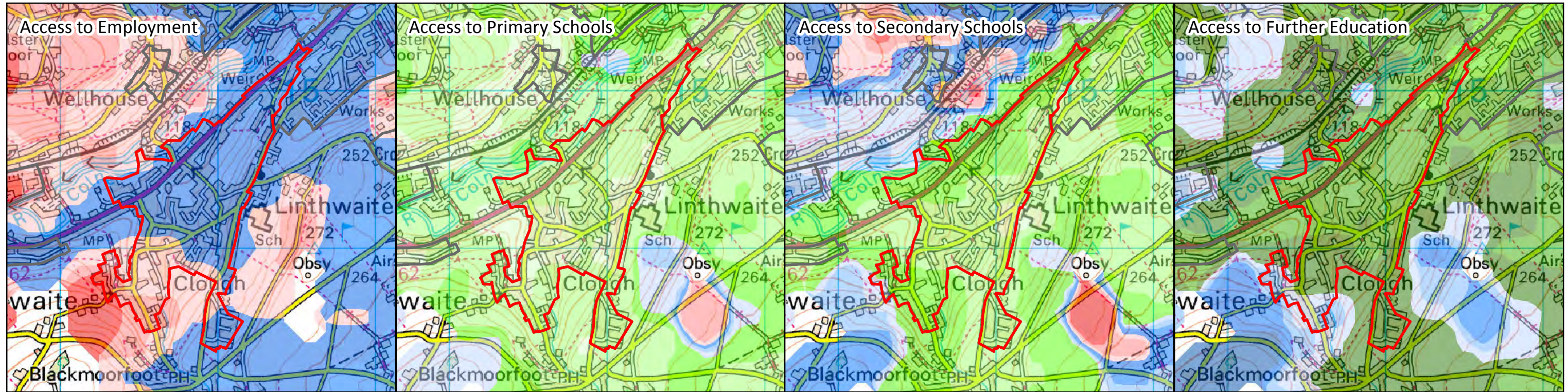
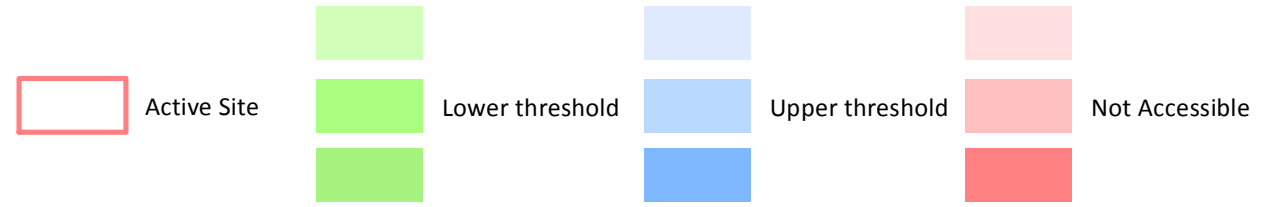


Kirklees Council Housing Allocations - Accessibility Assessments March 2015

Public Transport Journey Time Thresholds

Local Settlements: Linthwaite

The following travel time indicators are based on the travel time to reach each destination type by public transport to a maximum of 60 minutes journey time. The assessments are based on a AM peak period.



Kirklees Council Housing Allocations - Accessibility Assessments March 2015

Public Transport Journey Time Thresholds



Local Settlements: Lower Cumberworth

The following travel time indicators are based on the travel time to reach each destination type by public transport to a maximum of 60 minutes journey time. The assessments are based on a AM peak period.

