

Land south of Whitehall
Road, Cleckheaton
Landscape Character
Assessment

Site ID: E1831



**KIRKLEES COUNCIL
LANDSCAPE ARCHITECTS**

SEPTEMBER 15

Landscape Character Assessment

Introduction

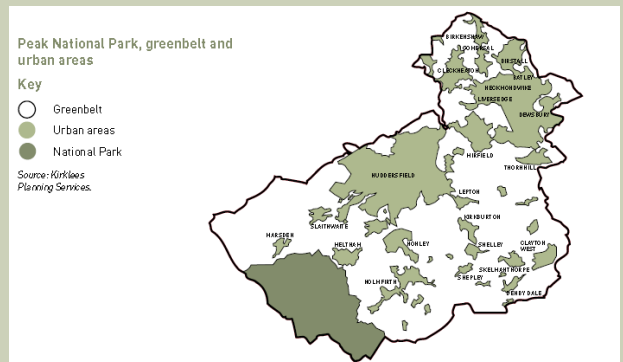
Background

The Kirklees district is situated in the south west of West Yorkshire, and is bounded by the boroughs of Calderdale and Bradford to the north, Leeds and Wakefield to the east and the Peak District National Park to the south and Greater Manchester to the west.

Kirklees occupies an area of approximately 409 square kilometres, making it the 3rd largest metropolitan district in terms of area.

Although Kirklees is comprised of urban areas, including Huddersfield, Dewsbury, Mirfield, Batley, Marsden and Holmfirth, there are extensive swathes of countryside within the district, the majority of which are designated as Green Belt.

11% (4,574 hectares) of the borough is located within the Peak District National Park.



The objectives of the landscape assessment is to...

(i) describe and analyse the landscape character of a specific area identifying individual landscape types and those features/elements which characterise them;

(ii) provide a landscape framework to:

- guide and inform those responsible for development, landscape change and the management of landscape;
- seek to conserve and enhance the characteristic landscape types of the area;
- seek to avoid management methods and forms of development which would be detrimental to landscape character;
- specify measures to meet land management objectives;
- identify areas where little or no original fabric remains, where there are opportunities to create new landscapes.

(iii) identify the factors which have had an influence upon landscape change in the past and those that are likely to do so in the future, in making recommendations on how to respond to these changes;

(iv) have regard to local perceptions of landscape both past and present, 'sense of place' and areas of local landscape value.

Landscape Character Assessment

3

Key to Landscape types

Fringe farming



Traditional farming



Open plateau



Maintained grassland parkland



Valley side



Woodland development



Woodland brownfield



Industrial



Methodology

Landscape Character Assessment is a standard methodology for identifying, describing, classifying and mapping what is distinctive about our landscapes. It shows us their variety, and helps us to understand what makes one landscape different from another.

This Landscape Character Assessment has been produced following nationally recognised guidelines.

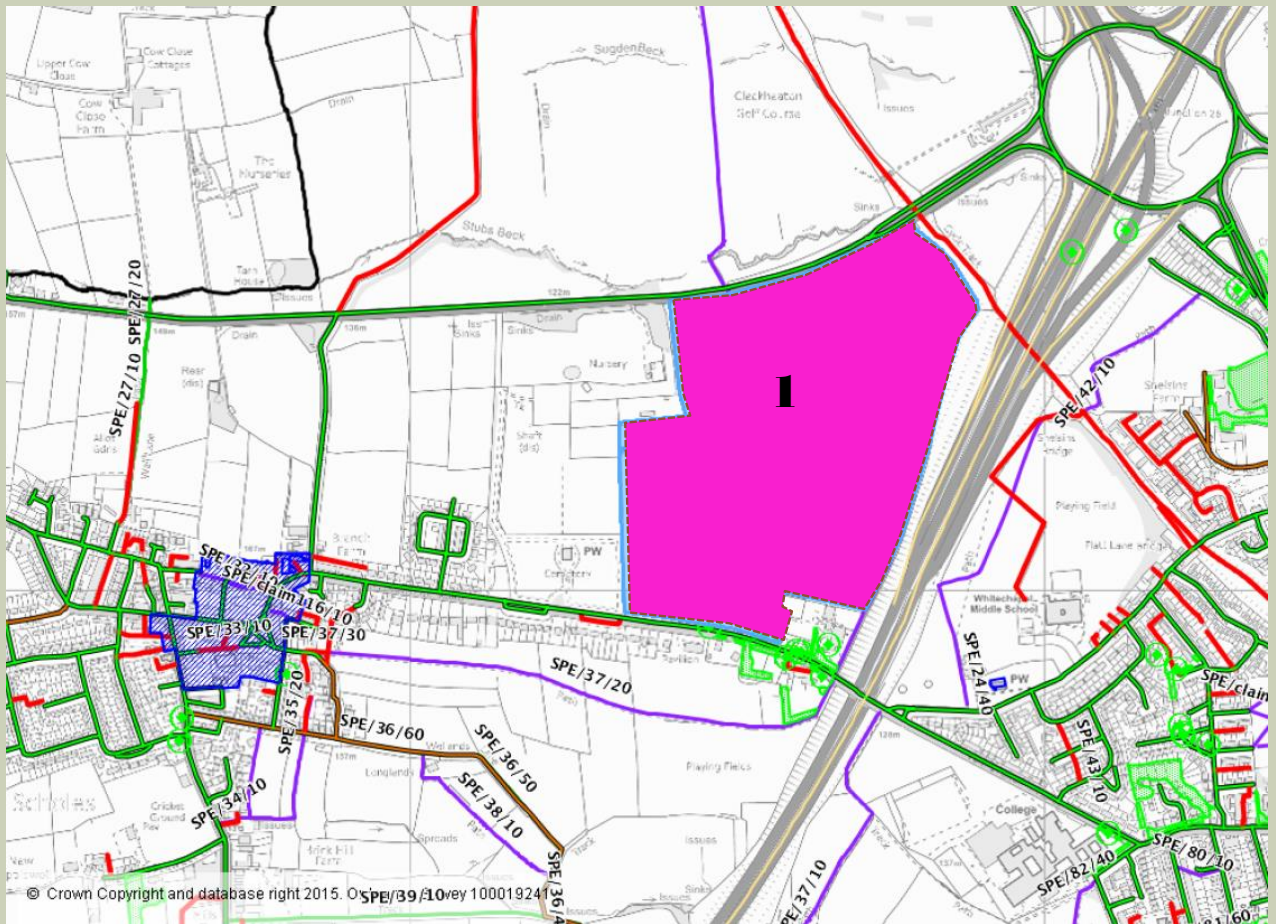
The methodology follows three steps;

- i) collection and review of data as a desk study, giving a general preliminary indication of landscape character areas or types
- ii) a period of field study recording both objective data and subjective responses to the landscape itself and testing the draft character areas;
- iii) an analysis and description of the collected information in the form of the report, with recommendations such as landscape guidelines or planning policy guidance, as required.

Landscape types plan

Land south of Whitehall Road, Cleckheaton

4



This area highlighted in blue is on the fringes of the existing residential/urban development North-West of Cleckheaton and just west of the M62 Motorway.

It lies within the Kirklees Character Profile area LCA K1: Thornton and Queensbury and the National Character Area Profile No. 37 - Yorkshire Southern Pennine Fringe.

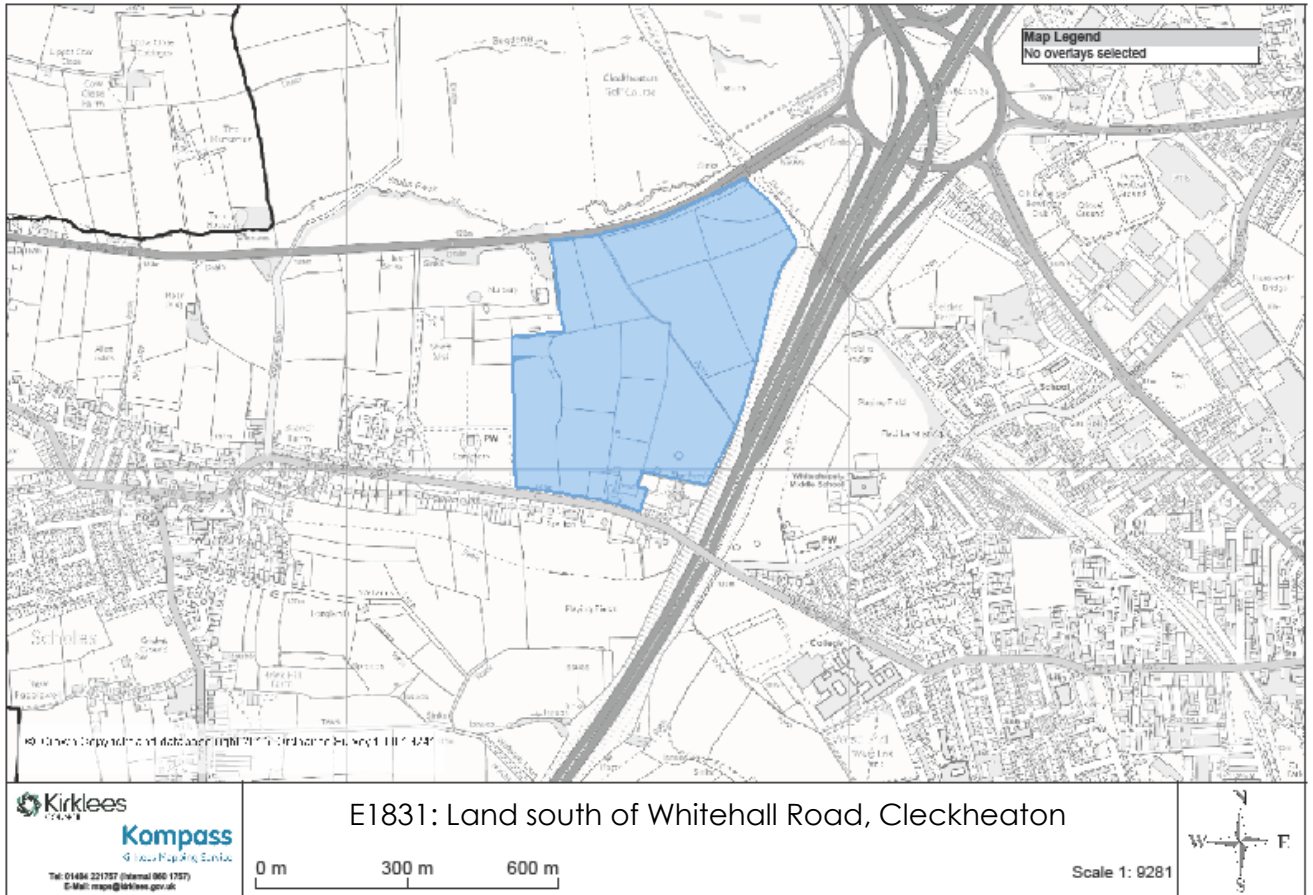
The site area can be classified as local character area:

1- Fringe farmland

Context Plan

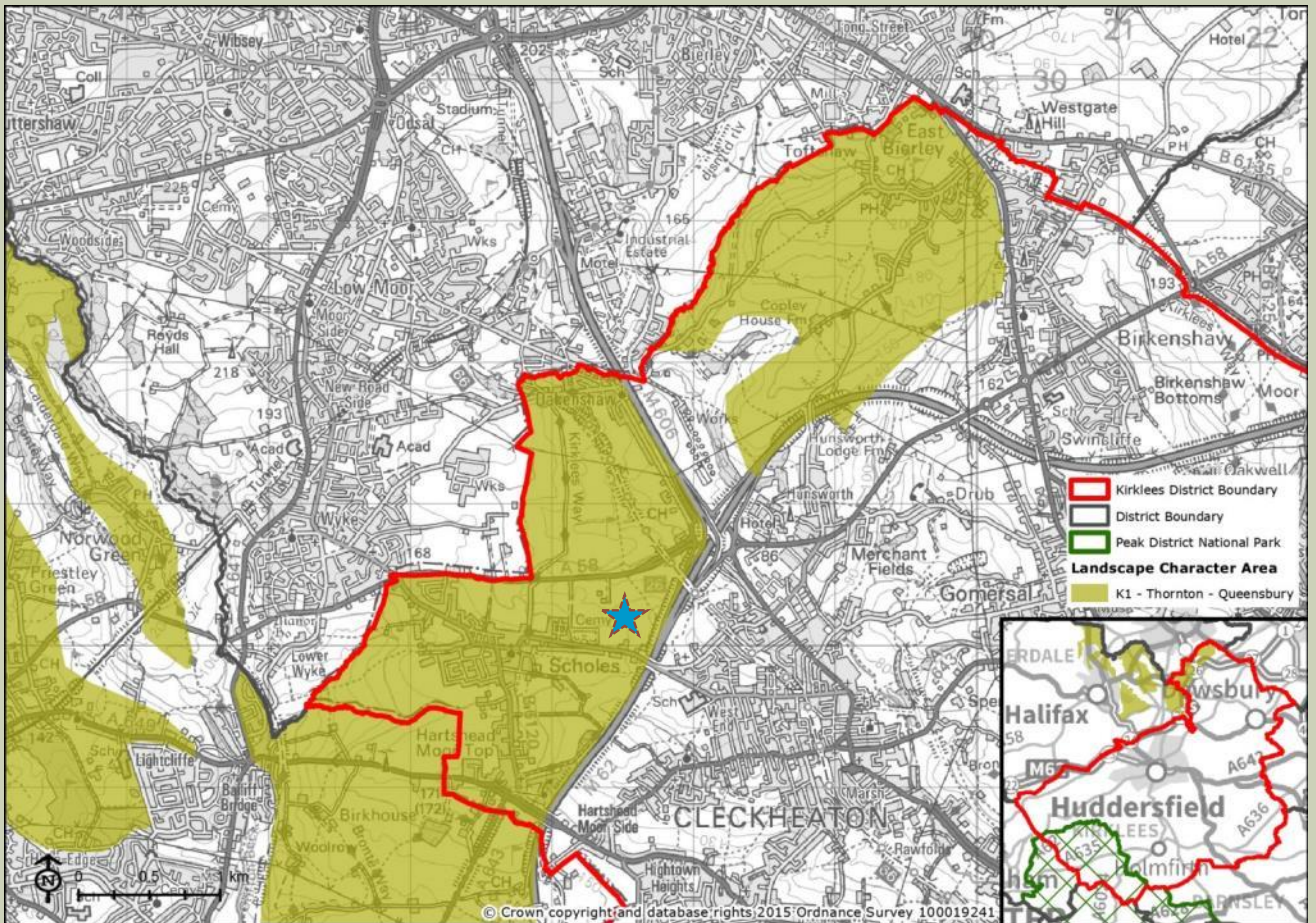
Land south of Whitehall Road, Cleckheaton

5



Local Landscape Character Plan

6



This LCA covers rural land in the north east of Kirklees, which rises up above Cleckheaton, Birkenshaw and the southern suburbs of Bradford. There are two parts of the LCA within Kirklees District. The LCA continues to the north-west into Calderdale District.

Kirklees Character Profile Area LCA K1: Thornton and Queensbury. The site is marked by a blue star

Landscape Character area Summary

7

• Physical influences

• Topography

- This site sits within Kirklees LCA K1 Coalfield edge Urban Fringe farmland in the north east of Kirklees, which rises up above Cleckheaton, Birkenshaw and the southern suburbs of Bradford. The site comprises gently undulating ground sloping up from the M62 motorway and down toward the A58

• Geology

- Shares a common underlying geology with most of the District, with the Pennine Lower Coal Measures formation which is underlain by Millstone Grit.

• Ecological influences

- Mature native trees along field boundaries and within fields provide interest in the farmed and urban fringe landscape.

• Human influences

- Within this rural fringe, there are buildings of a traditional local stone vernacular mixed with more modern house styles along the south boundary, a nursery business bounding the north western boundary and a cemetery to the west.
- The area is bounded by main roads connecting the large cities in the surrounding districts. The M62 with M606 junction and A58 bound the sides of this site and create much noise. A former railway line now cycle track forms the north-east boundary.
- **Past settlement**
- A rural feeling landscape which has gradually absorbed the encroaching towns and settlements and has become greatly affected by roads and transport. This site has remained farm land for 150 years with virtually the same boundaries and field shapes.

• Industrial patterns

- The site has never accommodated any industrial activity.

• Visual Character

- The character of the site is gradual undulating farmland of mixed grazing and arable land crossed with varied hedgerow boundaries, wire fencing and the remnants of stone walls. There is some residential to the south and Cleckheaton and District golf club beyond the A58 to the north.

Landscape Type 1.

Fringe Farming

8

• **Key Characteristics**

- Residential properties along Whitechapel Road B6120 that back onto a mixture of arable and pasture farmland of similar character to the site. Softy rolling topography, not flat and with some bands of trees to the north, north-west.

• **Landform**

- Gentle incline from north to south

• **Vegetation**

- Native hedgerows along field boundaries with some trees. A small area of parkland type tree planting in the south-east corner.

• **Tree cover**

- Minimal tree cover mostly restricted to the south-east corner of the site.

• **Land Use**

- Large arable fields, smaller area of pasture in the south-east corner.

• **Enclosure and views**

- The enclosure and divisions of the site are a mixture of native hedgerow, post and wire fence and remnants of dry stone wall within the site with intact stone walls to the south boundary. Views beyond are of a semi-rural, residential landscape with pockets of urban settlement and industrial and major roadways.

• **Settlement and buildings**

- Mixed residential strip of housing below the south boundary (not on the site) Farm buildings are included just inside the south site boundary.

• **Transport and Access**

- The site is wedged between three roads, access can easily be gained from Whitcliffe Road (B6120) and Whitehall Road (A58). The M62 Motorway runs slightly to the east of the site but not along the boundary. The Spen Way Heritage Trail, PROW footpath SPE/24/30 edges the site in the south-east then run diagonally through the centre of the site toward the north-west.

• **Landscape condition**

- The landscape is managed semi-improved grassland with large areas of arable. The landscape condition is moderate.

Landscape Type 1.

Fringe farming

9

- **Recreational**

- The only recreational use for the public of this site is the PROW that runs centrally through the site, SPE/24/30.

- **Noise**

- There is a high level of traffic noise generated from the M62 Motorway to the south eastern edge of the site and to the northern extent, from the A58.

- **Historical cultural**

- This has always been agricultural land. The farm building has been present on the site for approximately 200 years. By the 1920's the cemetery to the west and some dwellings have appeared along Whitcliffe Road at different time intervals up to present day.

- **Subjective description.**

- Within the site it is easy to believe that the site is rural pleasant farmlands. The extensive traffic noise from the M62 motorway makes this site very much urban fringe towards the eastern extents.



Typical images of character area 1



Landscape Character Area 1.

Fringe farming

10

Main strategies

Conserve where landscape character is strong, in good condition and has features, which distinguish the area from other areas.

Restore where the underlying character is still reasonable strong but the overall structure and individual elements and features are in decline.

Enhance where the underlying character is weak with no clear defining structure, and where positive action is needed to create an improved landscape structure.

Create where there is opportunity for a radical change to the existing landscape.

		STRENGTHEN	STRENGTHEN AND CONSERVE	CONSERVE
Condition	Good			
	Declining	STRENGTHEN AND ENHANCE	CONSERVE AND ENHANCE	CONSERVE AND RESTORE
Condition	Poor	CREATION	RESTORE AND ENHANCE	RESTORE
		weak	moderate	Strong
		Character		

Condition /character matrix

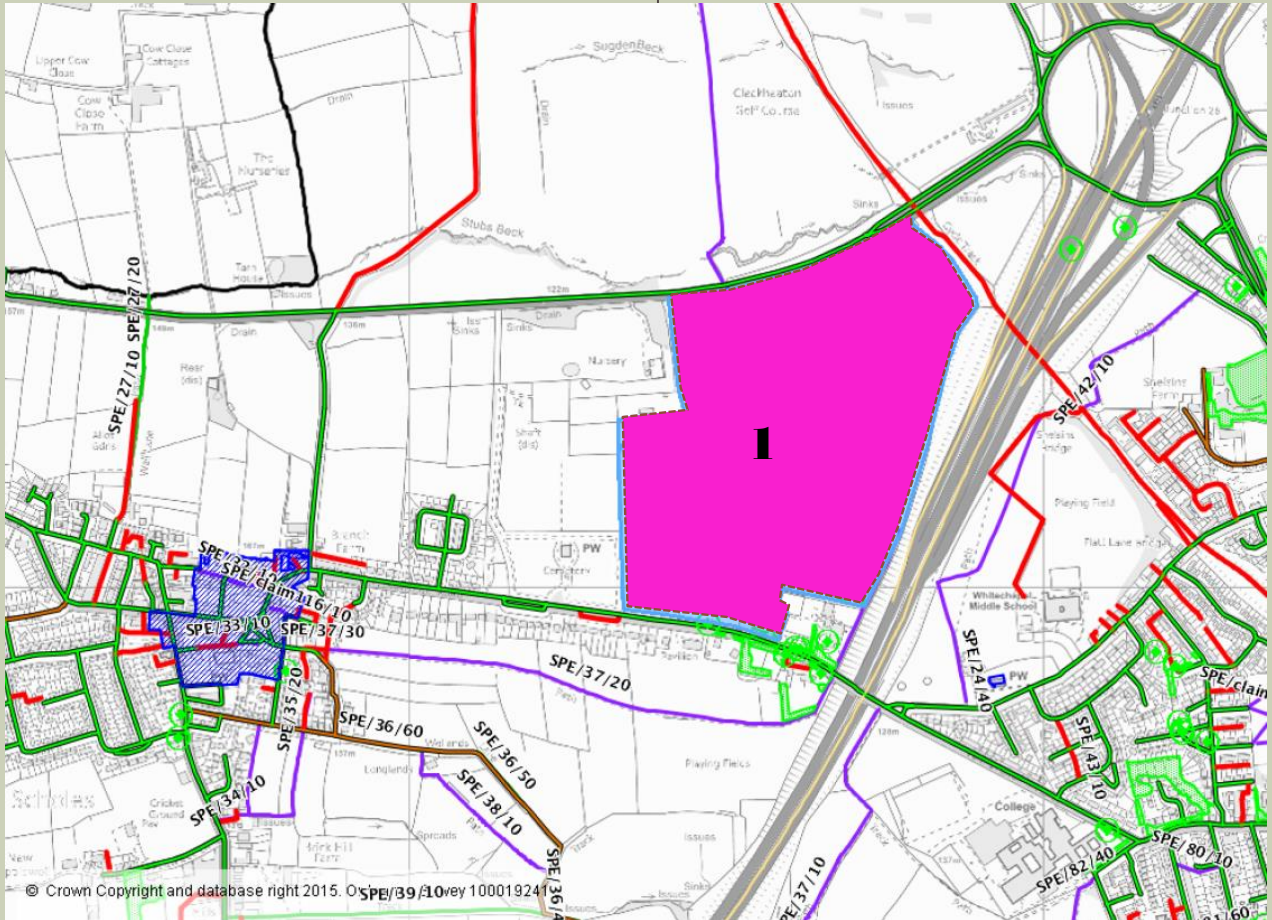
Conclusion:

The area is of declining character due to the influence of traffic noise from nearby major roads. While the site itself is of moderate condition, sensitive and appropriate development will strengthen character.

Conclusions Plan

Land south of Whitehall Road, Cleckheaton

11



Conclusion: Conserve and enhance

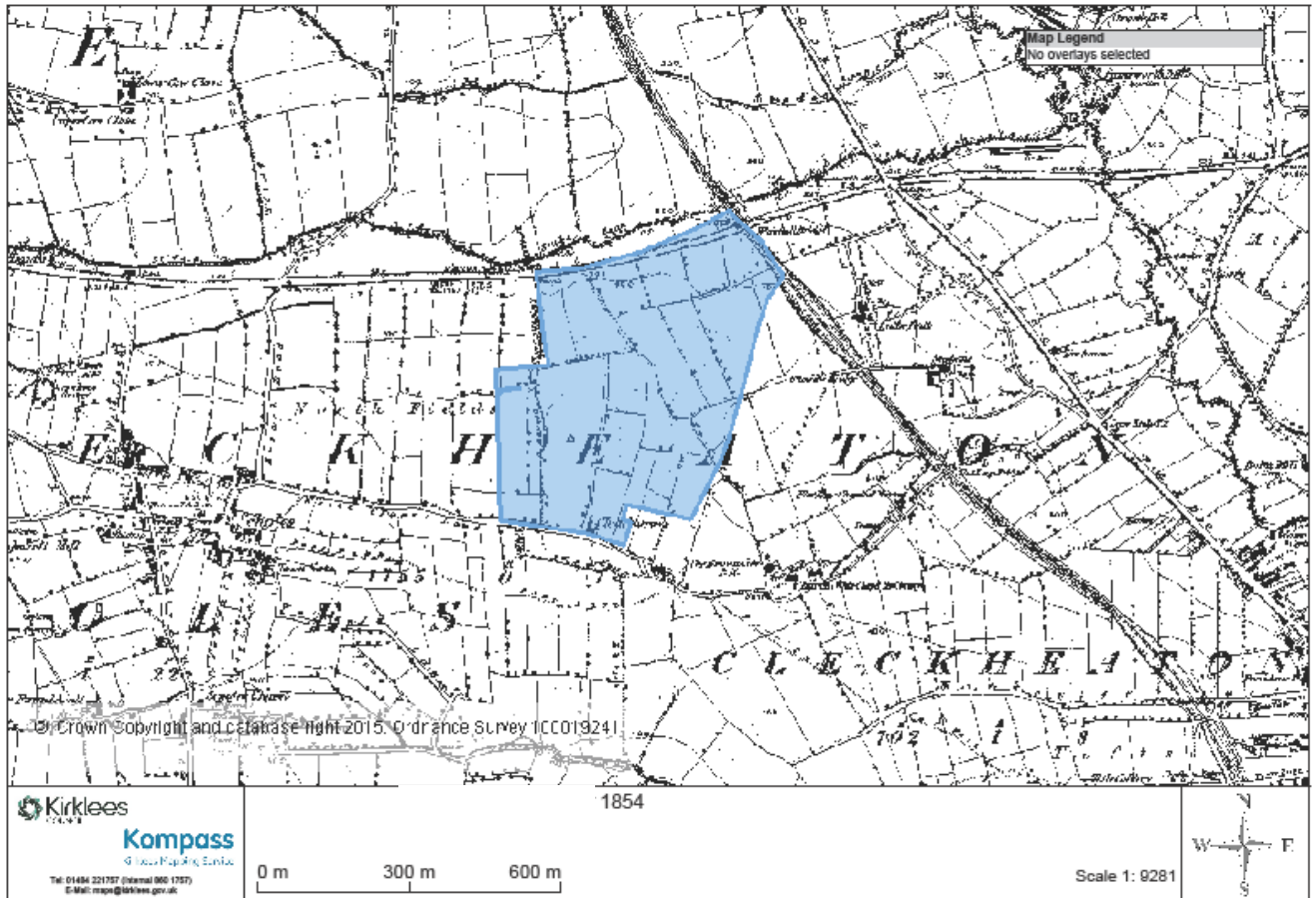
- Condition: declining
- Character : moderate

The site is of moderate landscape character suffering under the influence of the major roads around it. Landscape mitigation will be key for the development to act as a buffer to the urban fringe.

Historical Plan

Land south of Whitehall Road, Cleckheaton

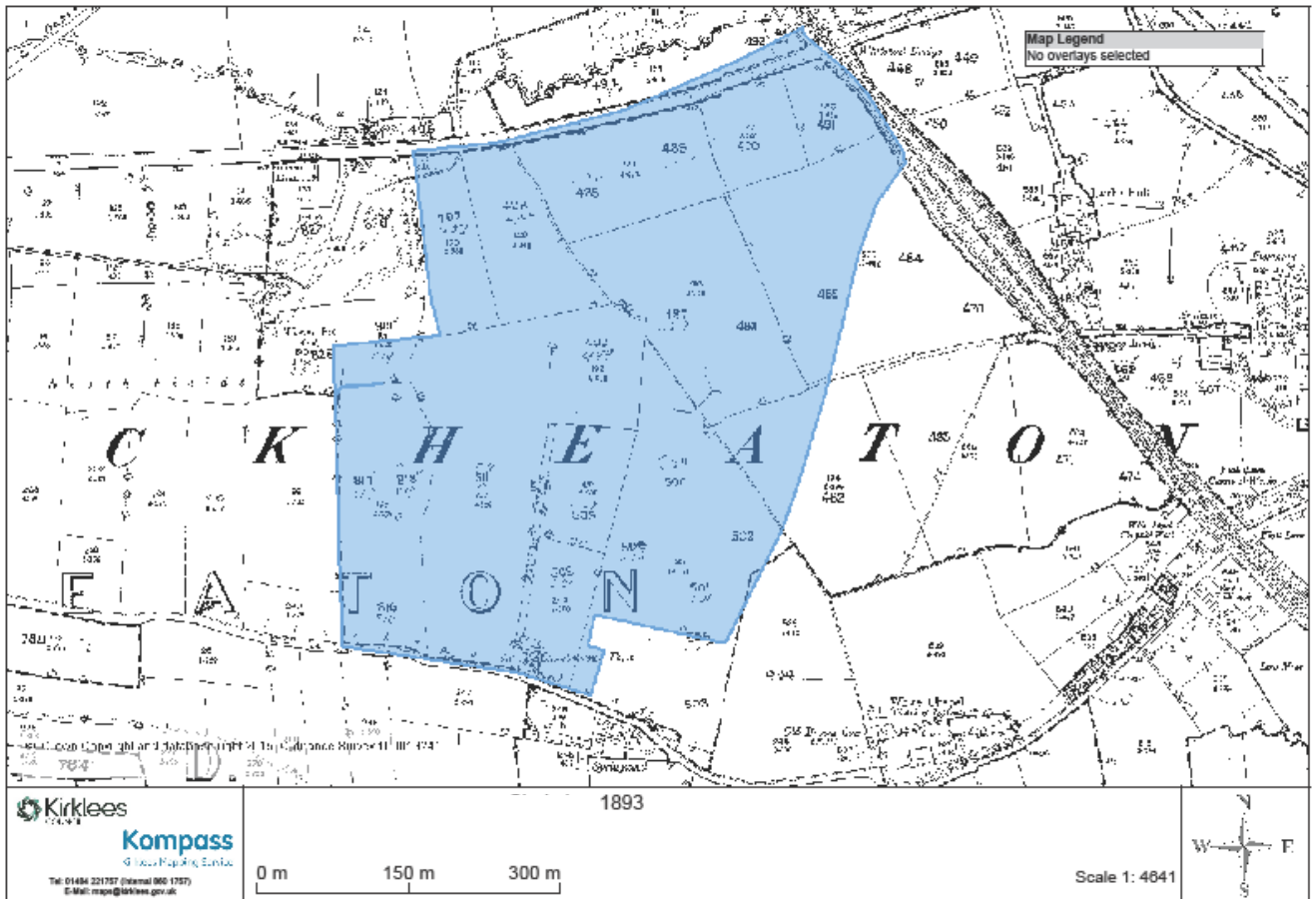
12



Historical Plan

Land south of Whitehall Road, Cleckheaton

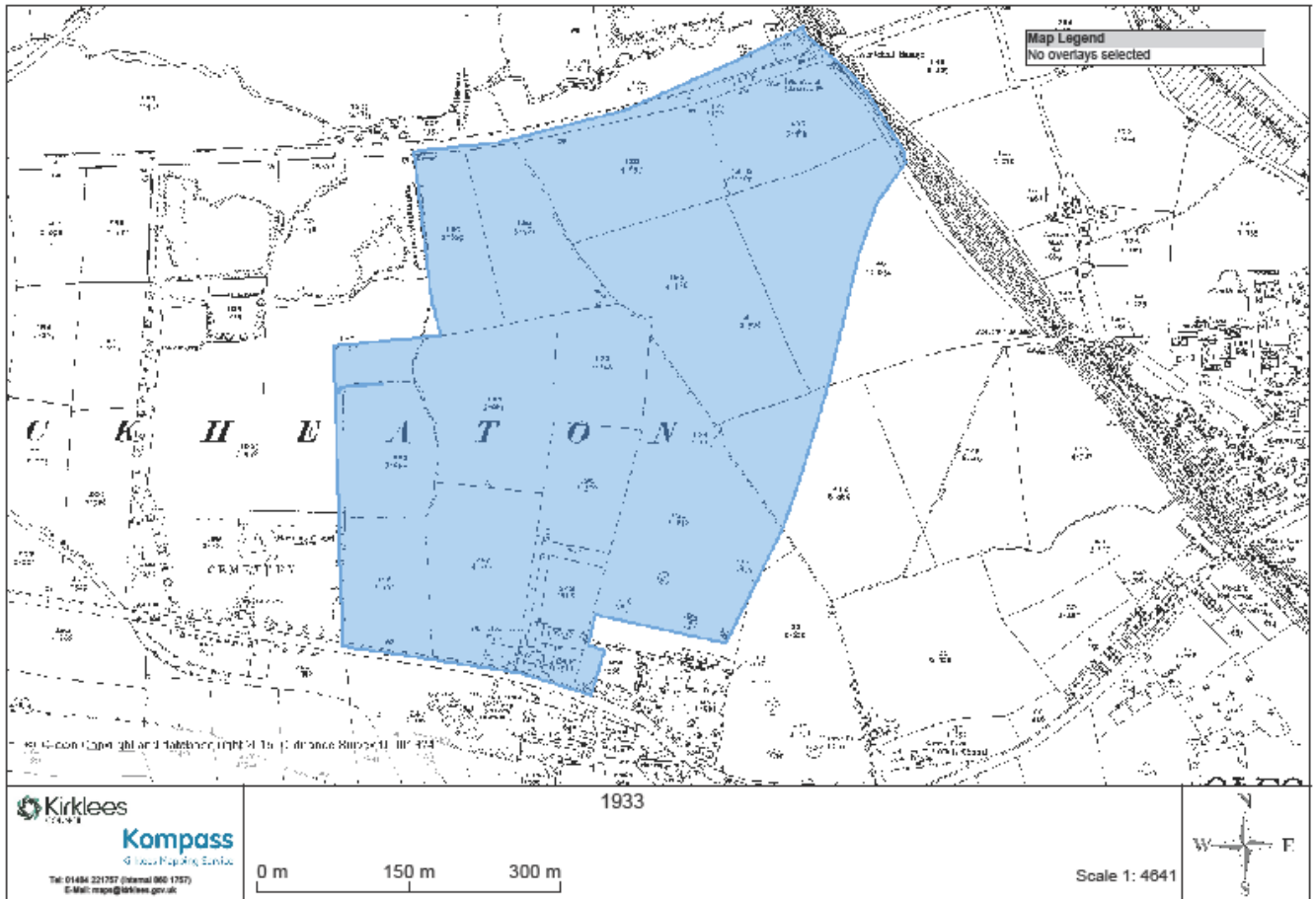
13



Historical Plan

Land south of Whitehall Road, Cleckheaton

14



Information Plan

Land south of Whitehall Road, Cleckheaton

15

