

Land to the north and south of
Wakefield Road Clayton West,
Huddersfield

Landscape Character
Assessment

Site ID: E2333



**KIRKLEES COUNCIL
LANDSCAPE ARCHITECTS**

SUMMER 2015

Landscape Character Assessment

2

Introduction

Background

The Kirklees district is situated in the south west of West Yorkshire, and is bounded by the boroughs of Calderdale and Bradford to the north, Leeds and Wakefield to the east and the Peak District National Park to the south—and Greater Manchester to the west. Kirklees occupies an area of approximately 409 square kilometres, making it the 3rd largest metropolitan district in terms of area.

Although Kirklees is comprised of urban areas, including Huddersfield, Dewsbury, Mirfield, Batley, Marsden and Holmfirth, there are extensive swathes of countryside within the district, the majority of which are designated as Green Belt.

11% (4,574 hectares) of the borough is located within the Peak District National Park.

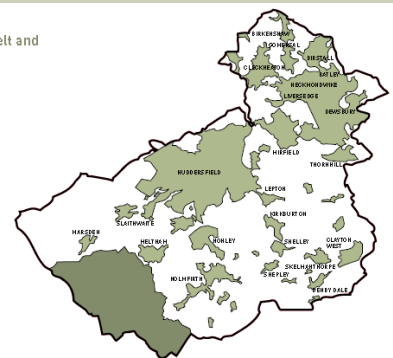


Peak National Park, greenbelt and urban areas

Key

- Greenbelt
- Urban areas
- National Park

Source: Kirklees Planning Services



The objectives of the landscape assessment is to...

(i) describe and analyse the landscape character of a specific area identifying individual landscape types and those features/elements which characterise them;

(ii) provide a landscape framework to:

- guide and inform those responsible for development, landscape change and the management of landscape;
- seek to conserve and enhance the characteristic landscape types of the area;
- seek to avoid management methods and forms of development which would be detrimental to landscape character;
- specify measures to meet land management objectives;
- identify areas where little or no original fabric remains, where there are opportunities to create new landscapes.

(iii) identify the factors which have had an influence upon landscape change in the past and those that are likely to do so in the future, in making recommendations on how to respond to these changes;

(iv) have regard to local perceptions of landscape both past and present, 'sense of place' and areas of local landscape value.

Landscape Character Assessment

3

Key to Landscape types

Fringe farming	
Traditional farming	
Open plateau	
Maintained grassland parkland	
Valley side	
Woodland development	
Woodland brownfield	
Industrial	

Methodology

Landscape Character Assessment is a standard methodology for identifying, describing, classifying and mapping what is distinctive about our landscapes. It shows us their variety, and helps us to understand what makes one landscape different from another

This Landscape Character Assessment has been produced following nationally recognised guidelines.

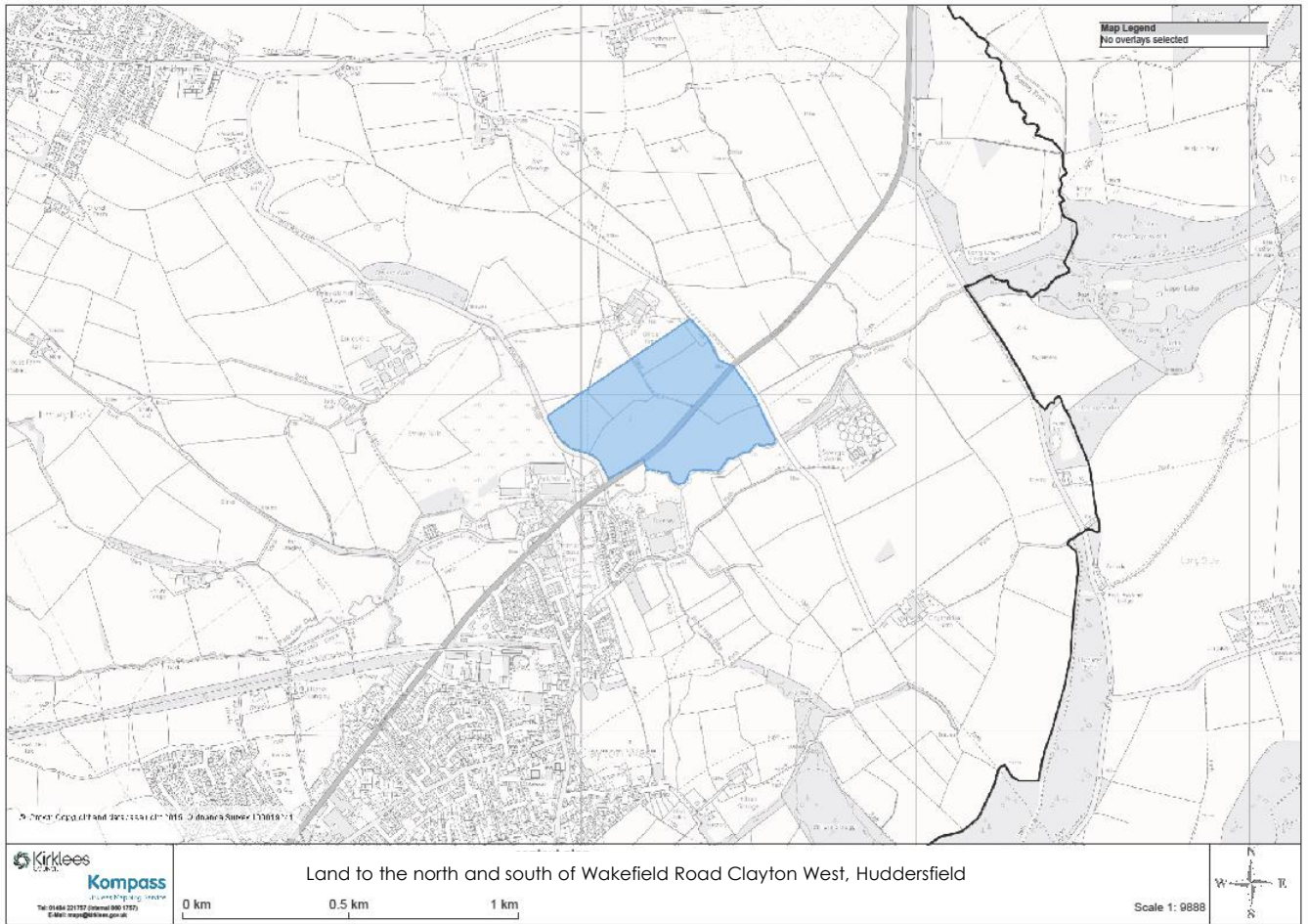
The methodology follows three steps;

- i) collection and review of data as a desk study, giving a general preliminary indication of landscape character areas or types
- ii) a period of field study recording both objective data and subjective responses to the landscape itself and testing the draft character areas;
- iii) an analysis and description of the collected information in the form of the report, with recommendations such as landscape guidelines or planning policy guidance, as required.

Context plan

Land to the north and south of Wakefield Road Clayton West, Huddersfield

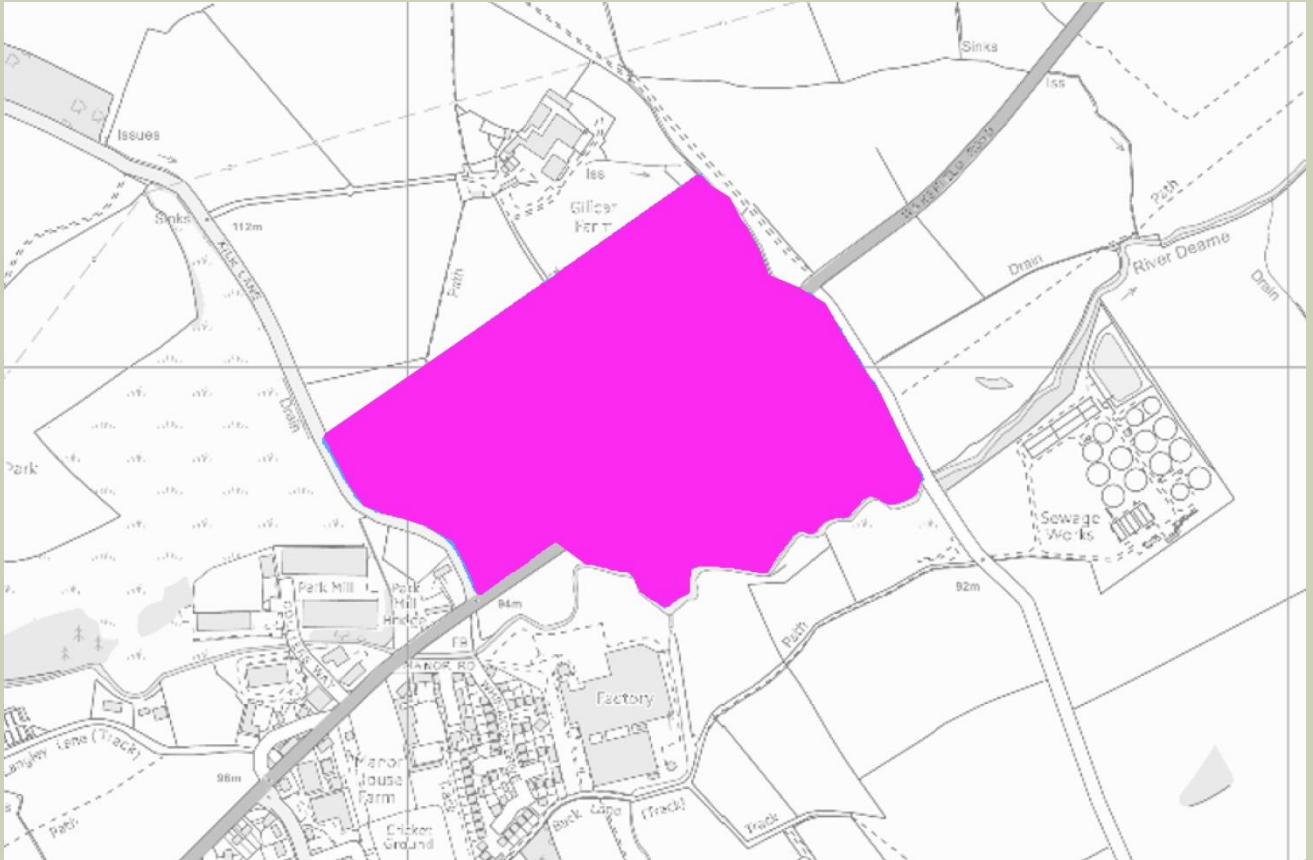
4



Landscape types plan

Land to the north and south of Wakefield Road Clayton West, Huddersfield

5



This area is in a pocket of land Enclosed and edged by the river Dearne along the southern edge, with mature trees growing along it's banks and the sloping topography to the north west.

It lies within the Local Character Profile area LCA G10: River Dearne Valley

National Character Area Profile No. 37 - Yorkshire Southern Pennine Fringe

The area consists of 1 landscape type.

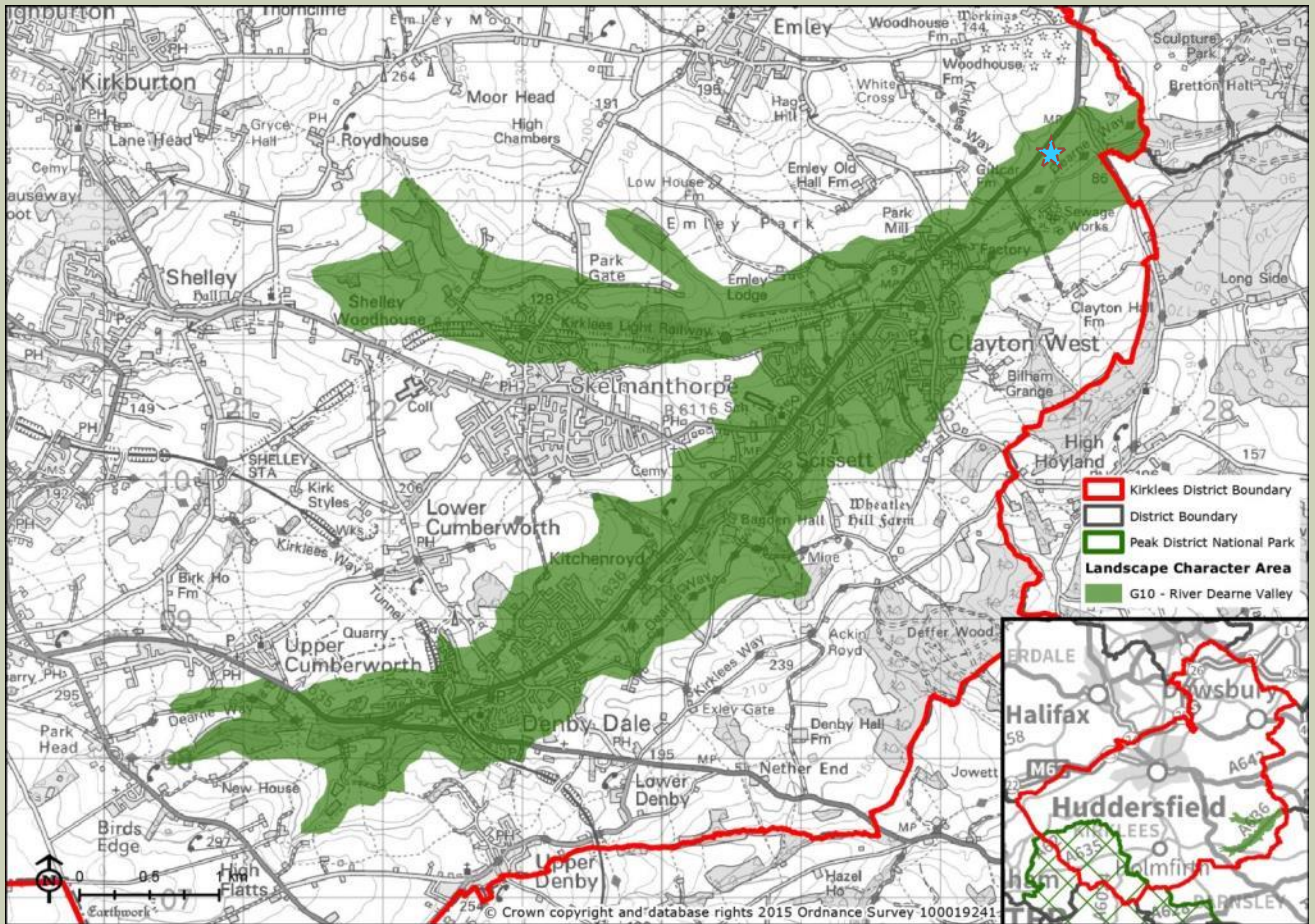
1- Fringe farming



Local character profile area

Land to the north and south of Wakefield Road Clayton West, Huddersfield

6



Local Character Profile area LCA G10: River Dearne Valley

National Character Area Profile No. 37 - Yorkshire Southern Pennine Fringe

Landscape Character area Summary

Land to the north and south of Wakefield Road Clayton West, Huddersfield

7

• **Physical influences**

• **Topography**

- The dominant landscape characteristic in this area is low lying topography, which gently slopes up to the north.
- "Relatively broad valleys associated with the upper parts of the River Dearne and its tributaries." –LCA G10.

• **Geology**

- "Underlying bedrock of Millstone Grit dating from the Upper Carboniferous period, overlain by the Pennine Lower Coal Formation which is characteristic of much of the wider area." –LCA G10.

• **Ecological influences**

- The site is edged by the river Dearne which supports a variety of wildlife.
- The site also has .."A high level of broadleaved woodland cover, particularly on the slopes adjacent to watercourses.." –LCA G10.

• **Human influences**

- The area is agricultural land, with some evidence of early quarrying on the site, which seems to have ended by the early 1900's. Outside the site boundary to the west is Park Mill Colliery, which was actively mined from late 1890's until 1989.

• **Past settlement**

- *The site has been used for farming/quarrying, with no settlement within the boundary.*

• **Industrial patterns**

- The site has been used for small scale quarrying in the past.

• **Visual Character**

- The visual character within the site is of low lying/valley bottom, with many mature trees following the line of the river Dearne. The busy road (A636) cuts through the site and detracts from the appearance of a remote agricultural setting.

Landscape Type 1.

Fringe farming

8

- **Key Characteristics**

- Agricultural fields, mature trees and hedgerow, River Dearne.

- **Landform**

- Gentle incline to the north with level valley bottom.

- **Vegetation**

- Mostly mature trees following the river, with riverbank species, including Japanese knotweed.

- **Tree cover**

- Tree cover following length of river Dearne.

- **Land Use**

- The land is used as agricultural/crop growing fields.

- **Enclosure and views**

- The area is enclosed by the landform and woodland, minimal views out of the site, except along the road corridor.

- **Settlement and buildings**

- No settlement on the site.

- **Transport and Access**

- The area is dissected by the A636 Wakefield Road. And is accessible on foot via two public rights of way:

- DEN/13/10

- Den/14/10

- The site is bounded on the west by Kiln road and to the southeast by public bridleway, DEN/15/30

- **Landscape condition**

- The landscape is used for growing crops and is in good condition, with well maintained hedgerows and stone walls.

Landscape Type 1.

Fringe farming

9

- **Recreational**

- The site is intersected by two rights of way, which are used for recreational walking/cycling.

- **Noise**

- The site is dominated by the noise of speeding cars along the A636 Wakefield Road.

- **Historical cultural**

- There is evidence of historical quarrying on site. Adjacent the site to the west was used as a colliery.

- **Subjective description.**

- The area feels very removed from any significant urban centre, although Clayton west village is just west of the site. The fast road, detracts from what would otherwise be a very tranquil quiet area.
- The site feels well enclosed on all sides by the topography and trees/hedgerows.



Typical images of landscape type 1 

Landscape Character area 1.

Fringe farming

10

Main strategies

Conserve where landscape character is strong, in good condition and has features, which distinguish the area from other areas.

Restore where the underlying character is still reasonably strong but the overall structure and individual elements and features are in decline.

Enhance where the underlying character is weak with no clear defining structure, and where positive action is needed to create an improved landscape structure.

Create where there is opportunity for a radical change to the existing landscape.

Condition /character matrix

Conclusion: Strengthen.

Condition: Good

Character: Weak

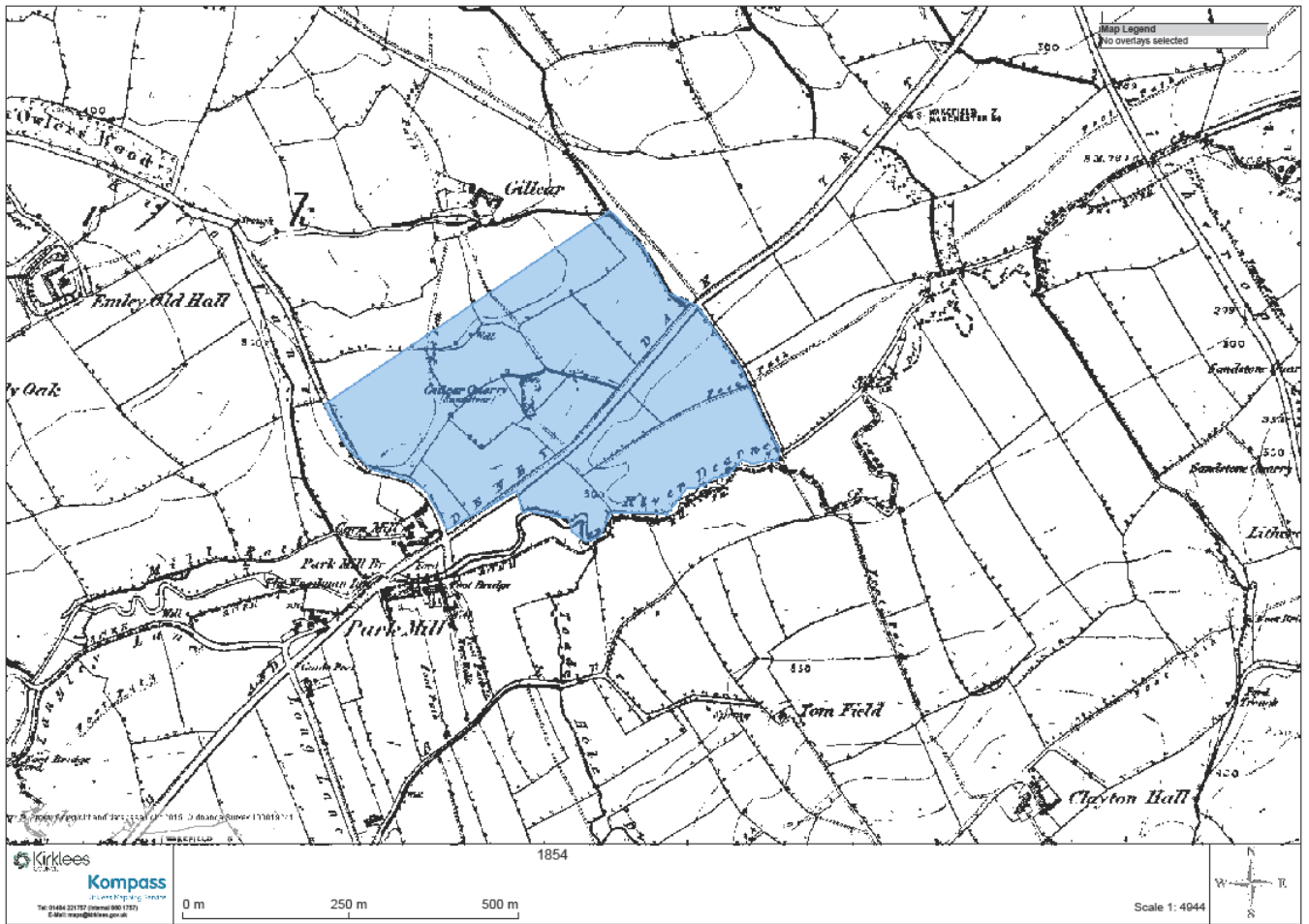
The area is of good condition with well maintained stone walling and hedgerows, but the character is weak due to the area mainly being large open fields used for agriculture.

The use of local materials and retaining existing features could strengthen the character of the site. Sympathetic development including the road could help to give the site a cohesive feel and relationship to the existing village.

Condition	Good	Strengthen	Strengthen And Conserve	Conserve
	Declining	Strengthen And Enhance	Conserve And Enhance	Conserve And Restore
	Poor	Creation	Restore And Enhance	Restore
		Weak	Moderate	Strong
		Character		

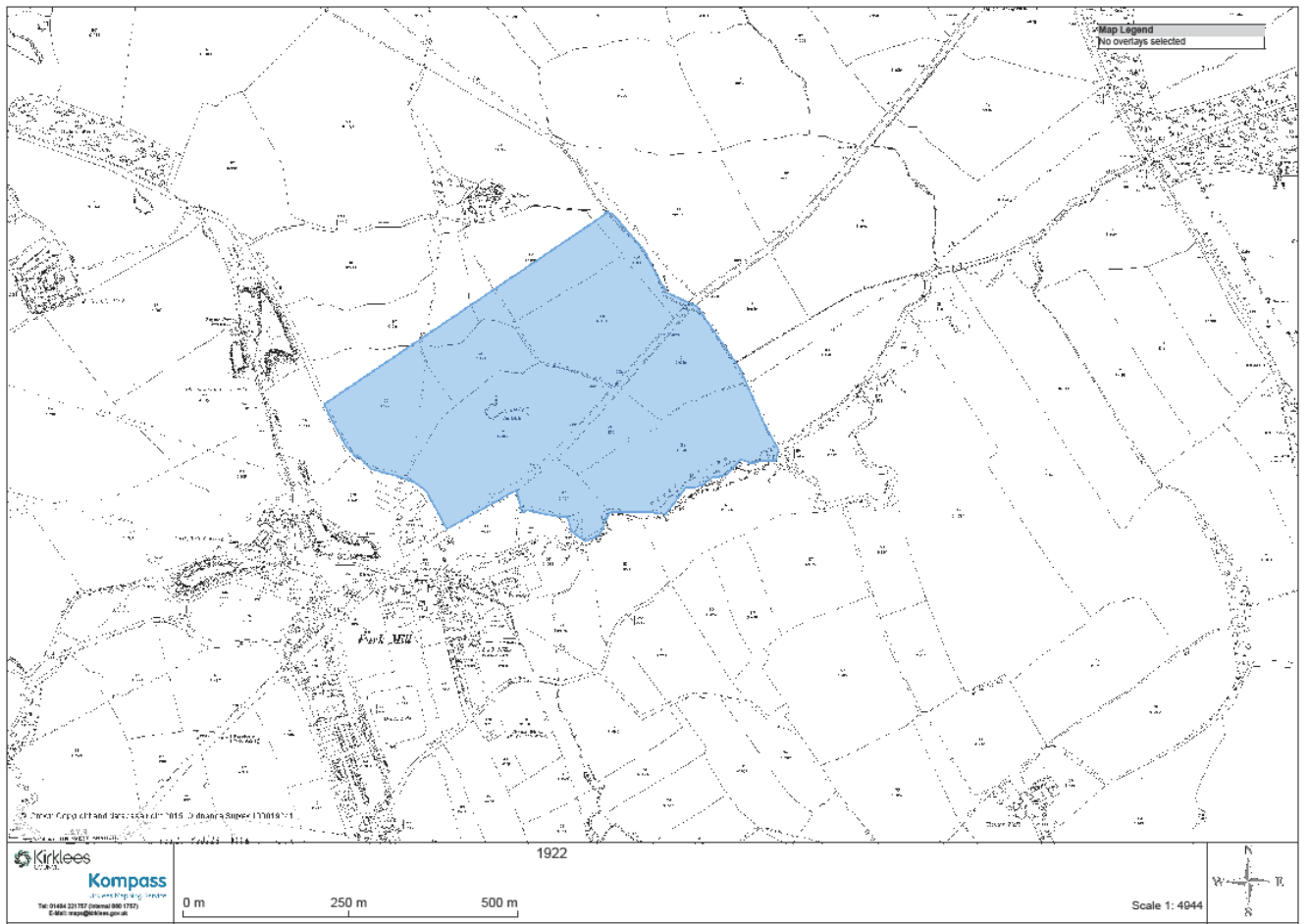
Historical Plans

11



Historical Plans

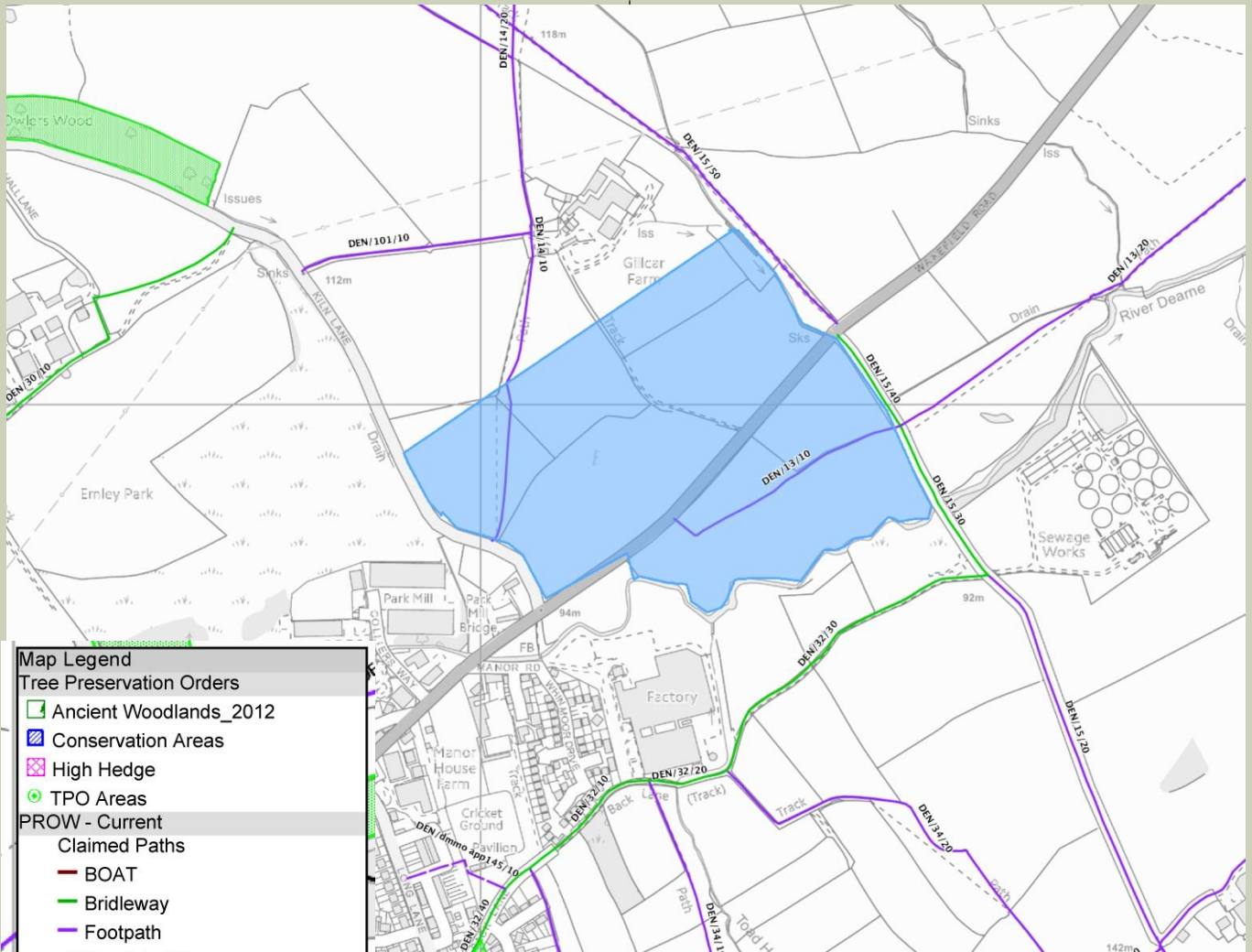
12



Information Plan

Land to the north and south of Wakefield Road Clayton West, Huddersfield

13



Map Legend

Tree Preservation Orders

- Ancient Woodlands_2012
- Conservation Areas
- High Hedge
- TPO Areas

PROW - Current

- Claimed Paths**
- BOAT
- Bridleway
- Footpath
- Restricted Byway
- all others
- PROW**
- Bridleway
- Byway
- Footpath
- all others
- Pennine Way
- PW_Sections