

Land at Storthes Hall,  
Kirkburton  
Landscape Character  
Assessment

Site ID: MDGB2134



**KIRKLEES COUNCIL  
LANDSCAPE ARCHITECTS**

**SUMMER 2015**

# Landscape Character Assessment

## Introduction

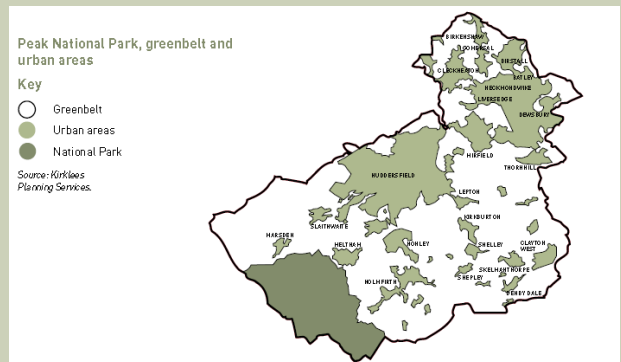
### Background

The Kirklees district is situated in the south west of West Yorkshire, and is bounded by the boroughs of Calderdale and Bradford to the north, Leeds and Wakefield to the east and the Peak District National Park to the south—and Greater Manchester to the west.

Kirklees occupies an area of approximately 409 square kilometres, making it the 3<sup>rd</sup> largest metropolitan district in terms of area.

Although Kirklees is comprised of urban areas, including Huddersfield, Dewsbury, Mirfield, Batley, Marsden and Holmfirth, there are extensive swathes of countryside within the district, the majority of which are designated as Green Belt.

11% (4,574 hectares) of the borough is located within the Peak District National Park.



The objectives of the landscape assessment is to...

(i) describe and analyse the landscape character of a specific area identifying individual landscape types and those features/elements which characterise them;

(ii) provide a landscape framework to:

- guide and inform those responsible for development, landscape change and the management of landscape;
- seek to conserve and enhance the characteristic landscape types of the area;
- seek to avoid management methods and forms of development which would be detrimental to landscape character;
- specify measures to meet land management objectives;
- identify areas where little or no original fabric remains, where there are opportunities to create new landscapes.

(iii) identify the factors which have had an influence upon landscape change in the past and those that are likely to do so in the future, in making recommendations on how to respond to these changes;

(iv) have regard to local perceptions of landscape both past and present, 'sense of place' and areas of local landscape value.

# Landscape Character Assessment

3

## Key to Landscape types

Fringe farming	
Traditional farming	
Open plateau	
Maintained grassland parkland	
Valley side	
Woodland development	
Woodland brownfield	
Industrial	

## Methodology

Landscape Character Assessment is a standard methodology for identifying, describing, classifying and mapping what is distinctive about our landscapes. It shows us their variety, and helps us to understand what makes one landscape different from another

This Landscape Character Assessment has been produced following nationally recognised guidelines.

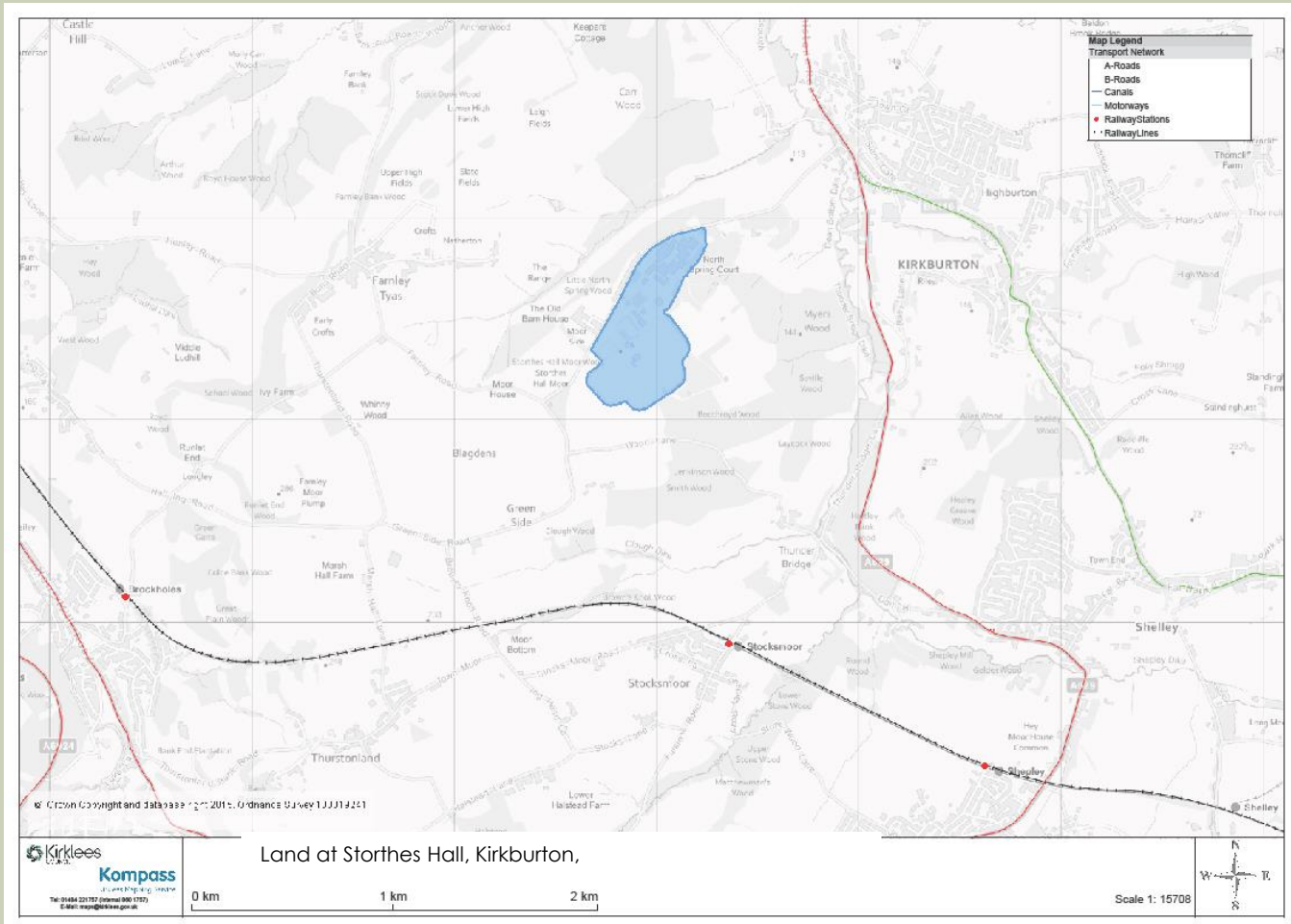
The methodology follows three steps;

- i) collection and review of data as a desk study, giving a general preliminary indication of landscape character areas or types
- ii) a period of field study recording both objective data and subjective responses to the landscape itself and testing the draft character areas;
- iii) an analysis and description of the collected information in the form of the report, with recommendations such as landscape guidelines or planning policy guidance, as required.

# Context plan

## Land at Storthes Hall, Kirkburton

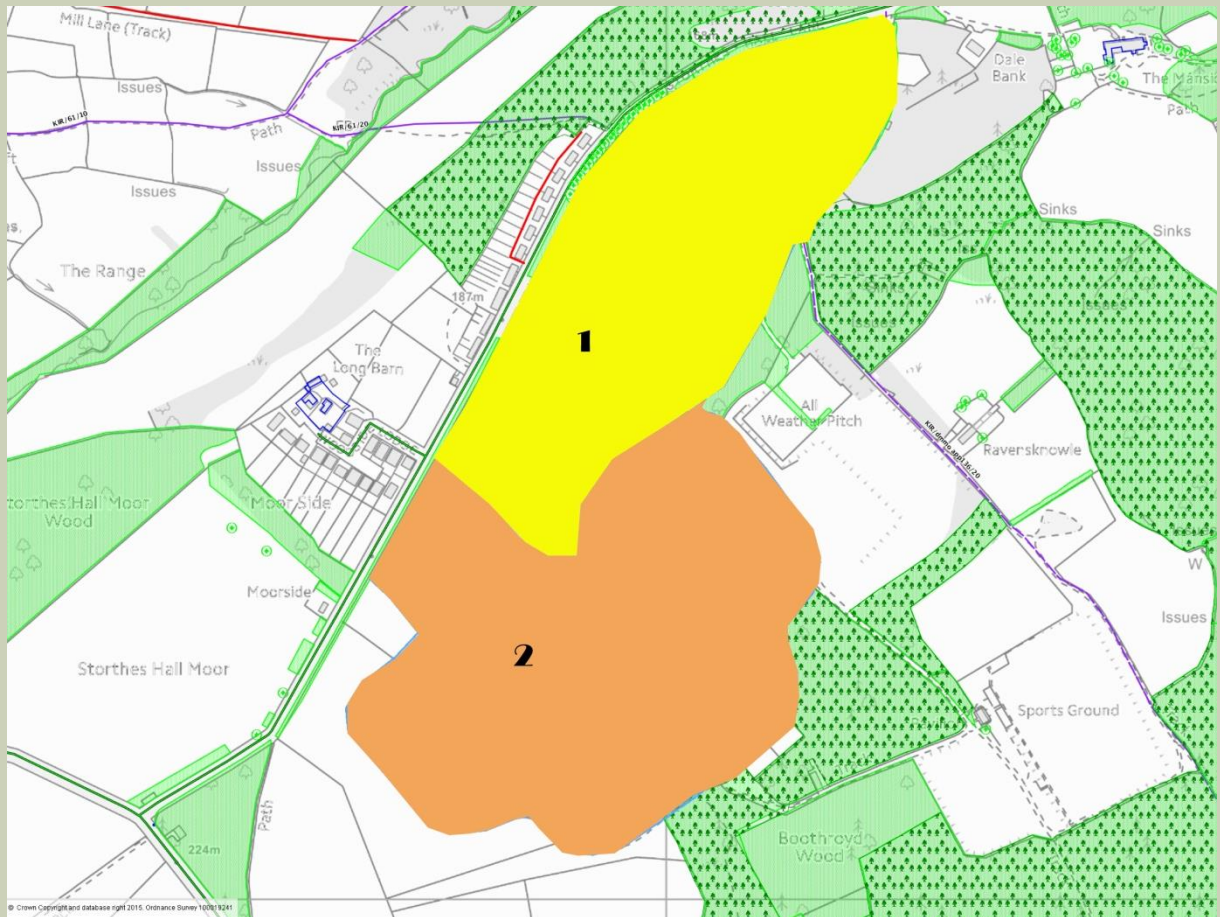
4



# Landscape types plan

## Land at Storthes Hall, Kirkburton

5



This area is in a pocket of land bordered on all side by mature and ancient woodland. The site has been developed as a woodland pocket development, half the site used as student residential halls and the other half of the site retains the half demolished remains of a former hospital site.

It lies mostly within the Local Character Profile area LCA E6: Fenay Beck Valley Rural Fringes, and partly (the northern most part of the site) lies within LCA G9: Fenay Beck Valley & Tributaries National Character Area Profile No. 37 - Yorkshire Southern Pennine Fringe

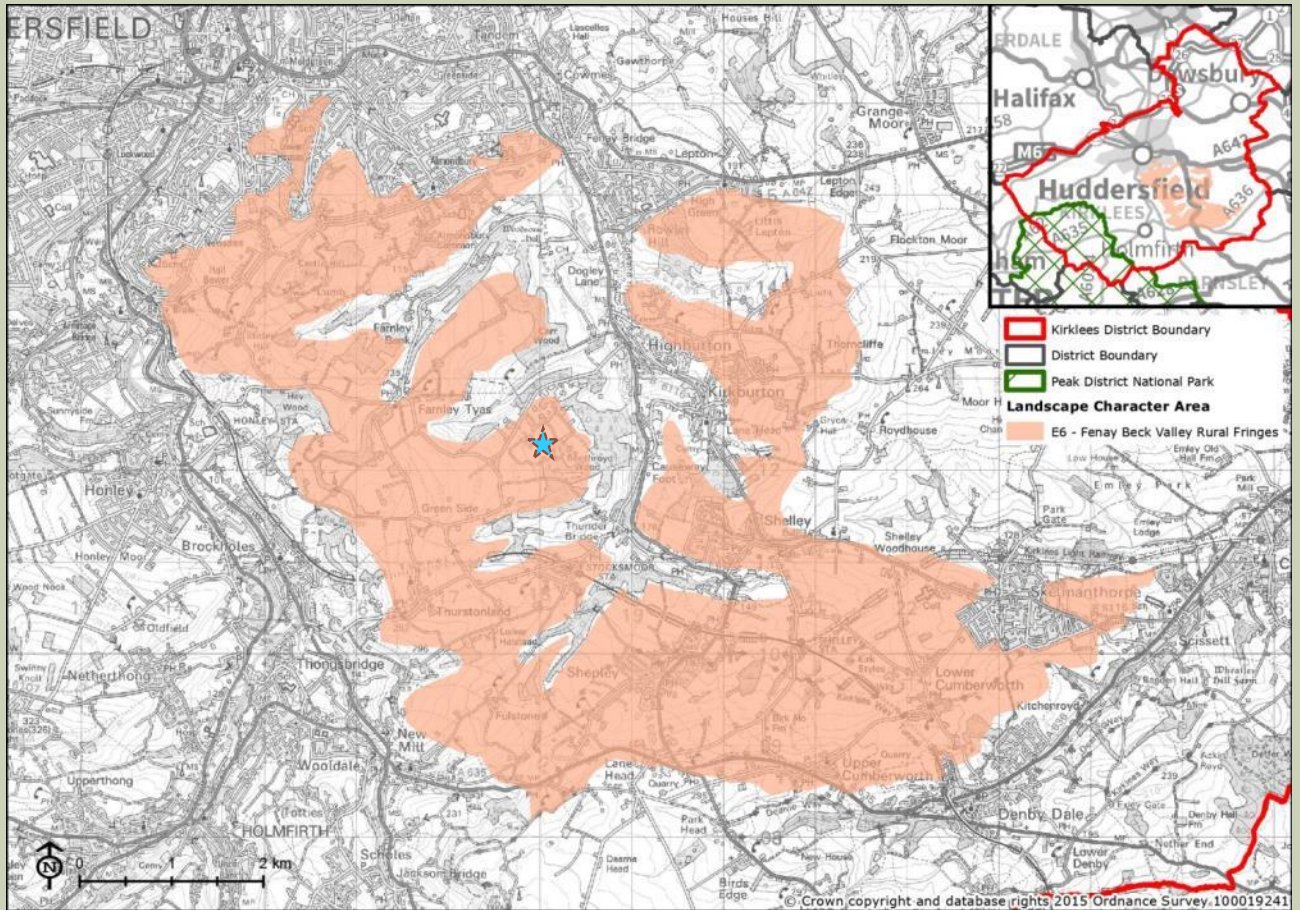
The area consists of 2 landscape type.

- 1- Woodland development 
- 2- Woodland brownfield site 

# Local Character Profile Plan

## Land at Storthes Hall, Kirkburton

6



Local Character Profile area LCA E6: Fenay Beck Valley Rural Fringes

# Landscape Character area Summary

## Land at Storthes Hall, Kirkburton

7

- **Physical influences**

- **Topography**

- The dominant landscape characteristics of this area is the mature and ancient woodland which edges and encroaches the site. The topography of the site is relatively flat with a gentle incline from the north to the south.

- **Geology**

- ... "Pennine Lower Coal Formation underlain by Millstone Grit – typical of the geology in this area". -Local LCA

- **Ecological influences**

- The site is bordered by mature and ancient woodland.

- **Human influences**

- The area was historically a hospital but was later closed and half the site was redeveloped as accommodation for students of Huddersfield University.

- **Past settlement**

- *The site was partially developed from 1900's onwards as a hospital, which eventually covered the whole site by the early 1920's.*

- **Industrial patterns**

- The area has never accommodated any industrial activity.

- **Visual Character**

- The visual character within the site is of a pocket development set within dense mature woodland, which is dominant and encroaching the site at every viewpoint.

# Landscape Type 1.

## Woodland Development

8

- **Key Characteristics**

- Mature woodland with modern low student residency blocks and associated infrastructure.

- **Landform**

- The land is gently inclining from north to south.

- **Vegetation**

- Mature / ancient woodland edge the site. Some ornamental species remain within the site as remnants of the former hospital gardens.

- **Tree cover**

- The site is dominated by mature woodland which edges and encroaches the site giving the feeling of an enclosed canopy.

- **Land Use**

- Location for student accommodation village.

- **Enclosure and views**

- The site is very much enclosed by woodland and views out or into the site are blocked by trees.

- **Settlement and buildings**

- The buildings on the site form the students accommodation.

- **Transport and Access**

- The site is accessible from Storthes Hall Lane, the claimed footpath KIR/dmno app 136/20 traverses the site just inside the north eastern boundary.

- **Landscape condition**

- The site is well maintained and in good overall condition.



# Landscape Type 1.

## Woodland Development

9

- **Recreational**

- The site is used by locals walking through the campus and it also incorporates sports facilities, such as a sports pitch area.

- **Noise**

- The noise within the site is produced mainly through movement of the trees, minimal external site noise can be heard.

- **Historical cultural**

- Since the early 1900's the site has been developed as a hospital site.

- **Subjective description.**

- The area gives the feeling of being very secluded and with a larger forest area, the trees are very mature and dominate the space, giving a feeling of enclosure and reduced light levels due to the tree canopies. The mature trees, give the area a strong sense of character.



Typical images of landscape type 1



# Landscape Type 1.

## Woodland Development

10

### Main strategies

**Conserve** where landscape character is strong, in good condition and has features, which distinguish the area from other areas.

**Restore** where the underlying character is still reasonably strong but the overall structure and individual elements and features are in decline.

**Enhance** where the underlying character is weak with no clear defining structure, and where positive action is needed to create an improved landscape structure.

**Create** where there is opportunity for a radical change to the existing landscape.

### Condition /character matrix

#### Conclusion:

The area is of strong character and good condition, the mature woodland setting should be conserved as much as possible, any future development needs to be sympathetic to the character that the trees create and also to enhance this as much as possible. A tree protection plan and methodology of working in proximity to the trees would need to be provided, along with a thorough tree survey to identify condition and species of trees on site.

Condition	Good	Strengthen	Strengthen And Conserve	Conserve
	Declining	Strengthen And Enhance	Conserve And Enhance	Conserve And Restore
	Poor	Creation	Restore And Enhance	Restore
		Weak	Moderate	Strong
		Character		

# Landscape Type 2.

## Woodland Brownfield

11

- **Key Characteristics**

- Mature woodland encroaching a derelict area , with half demolished buildings.
- **Landform**
  - The land is gently inclining from north to south.
- **Vegetation**
  - Mature / ancient woodland edge the site. The woodland undergrowth has taken over the site, along with rough wild grasses.
- **Tree cover**
  - The site is dominated by mature woodland which edges and encroaches the site giving the feeling of an enclosed canopy.
- **Land Use**
  - No use at the moment the site is secured and not accessible.
- **Enclosure and views**
  - The site is surrounded by woodland and views out or into the site are blocked.
- **Settlement and buildings**
  - The buildings on the site, are now in ruin and partly demolished, it was once part of a former hospital complex.

- **Transport and Access**

- No access through or into the site is currently allowed due to the dangerous condition of the buildings
- **Landscape condition**
  - The site is in a poor condition because of its neglect and because of dangerous abandoned buildings, scrubby undergrowth covers much of the site. However the woodland edges are of good quality.

# Landscape Type 2.

## Woodland Brownfield

12

- **Recreational**
- No current recreational use.
  
- **Noise**
- Only noise within the site would be sound generated by the wind and the trees and occasional wildlife .
  
- **Historical cultural**
- Since the early 1920's the site has been developed as an extension to the existing hospital site adjacent.
  
- **Subjective description.**
- The area gives the feeling of being very secluded because of the surrounding woodland area, the trees are very mature and dominate the space , giving a feeling of enclosure and reduced light levels due to the tree canopies. The mature trees, give the area a strong sense of character. The abandoned buildings make the place feel forgotten and neglected.



Typical images of landscape type 2 

# Landscape Type 2.

## Woodland Brownfield

13

### Main strategies

**Conserve** where landscape character is strong, in good condition and has features, which distinguish the area from other areas.

**Restore** where the underlying character is still reasonably strong but the overall structure and individual elements and features are in decline.

**Enhance** where the underlying character is weak with no clear defining structure, and where positive action is needed to create an improved landscape structure.

**Create** where there is opportunity for a radical change to the existing landscape.

### Condition /character matrix



### Conclusion:

The area remains of strong character though poor condition,. The character which is of mature woodland setting should be restored as much as possible, any future development needs to be sympathetic to the character that the trees create and also to enhance this as much as possible. Through clever and sympathetic development the site could be restored to a wonderful setting with strong character and good condition.

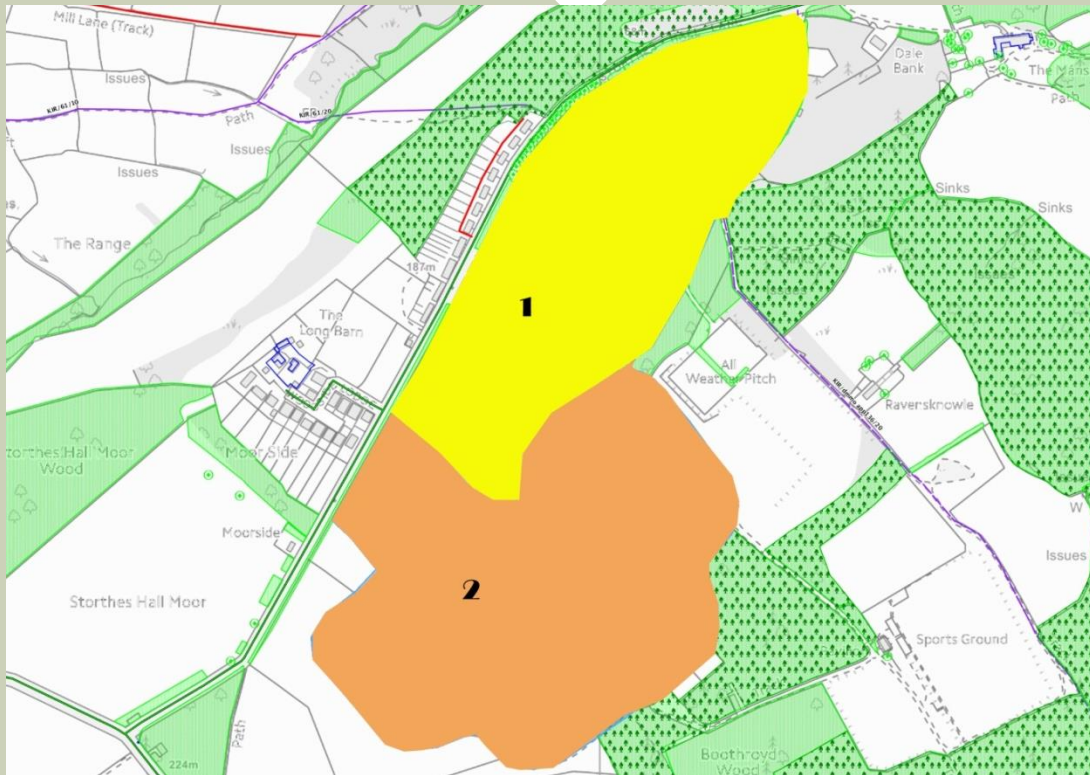
A tree protection plan and methodology of working in proximity to the trees would need to be provided, along with a thorough tree survey to identify condition and species of trees on site.

Condition	Good	Strengthen	Strengthen And Conserve	Conserve
	Declining	Strengthen And Enhance	Conserve And Enhance	Conserve And Restore
	Poor	Creation	Restore And Enhance	Restore
		Weak	Moderate	Strong
		Character		

# Conclusion Plan

## Land at Storthes Hall, Kirkburton

14



### Landscape Type 1

**Character : Strong**

**Condition: Good**

**Conclusion: CONSERVE**

The area is of strong character and in good condition, the mature woodland setting should be conserved as much as possible, any future development needs to be sympathetic to the character that the trees create and also to enhance this as much as possible. A tree protection plan and methodology of working in proximity to the trees would need to be provided, along with a thorough tree survey to identify condition and species of trees on site.

### Landscape Type 2

**Character : Strong**

**Condition: Poor**

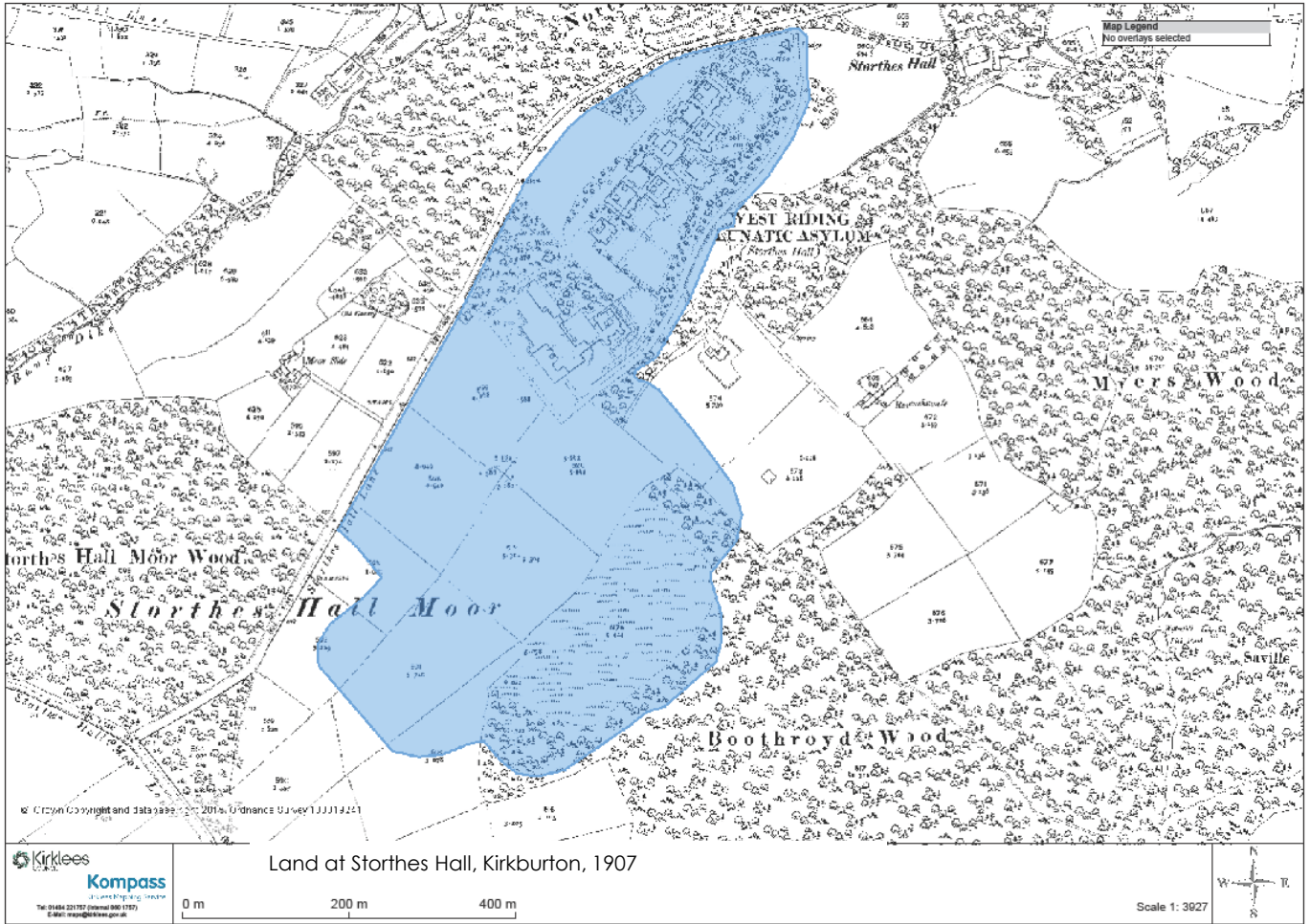
**Conclusion: RESTORE**

The area remains of strong character, but in a poor condition, the mature woodland setting should be restored as much as possible, any future development needs to be sympathetic to the character that the trees create and also to enhance this as much as possible. Through clever and sympathetic development the site could be restored to a landscape of strong character and good condition.

A tree protection plan and methodology of working in proximity to the trees would need to be provided, along with a thorough tree survey to identify condition and species of trees on site.

# Historical Plans

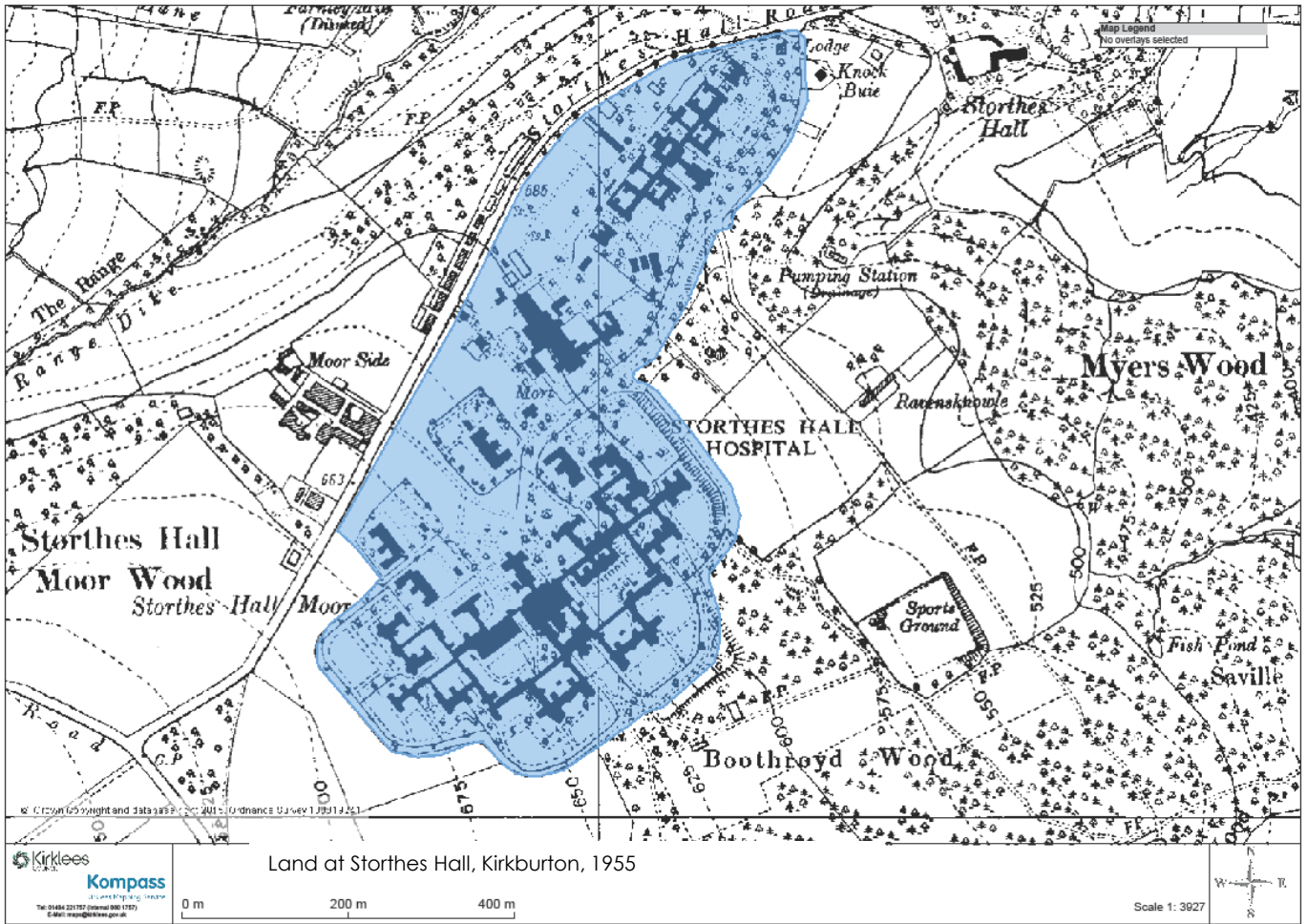
15



1907

# Historical Plans

16



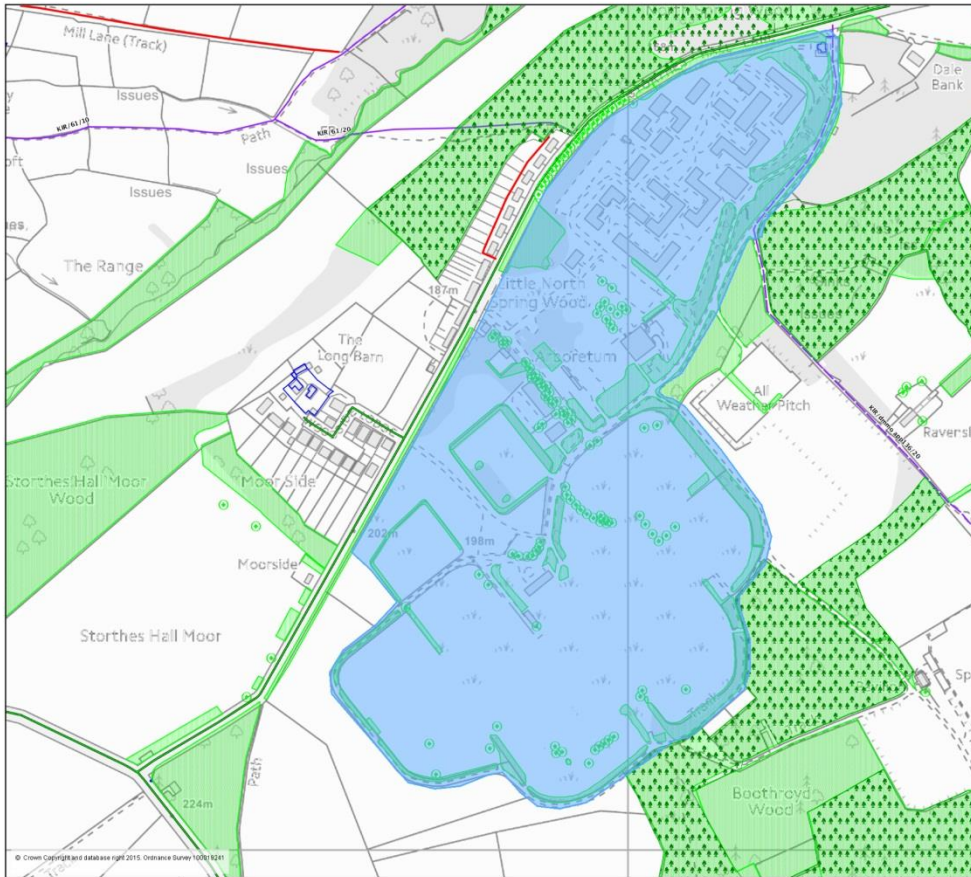
1955



# Information Plan

## Land at Storthes Hall, Kirkburton

17



Land at Storthes Hall, Kirkburton, Legend plan

Kirklees Council  
**Kompass**  
 Kirklees Mapping Service  
 Tel: 01484 221757 (Internal 880 1757)  
 E-Mail: [map@kirklees.gov.uk](mailto:map@kirklees.gov.uk)

0 m 200 m 400 m

Map Legend	
<b>Tree Preservation Orders</b>	
	Ancient Woodlands_2012
	Conservation Areas
	High Hedge
	TPO Areas
<b>Adopted Register</b>	
<b>Highway Register</b>	
	Adopted
	Part Adopted
	Private
	all others
<b>PROW - Current</b>	
<b>Claimed Paths</b>	
	BOAT
	Bridleway
	Footpath
	Restricted Byway
	all others
<b>PROW</b>	
	Bridleway
	Byway
	Footpath
	all others
	Pennine Way
	PW_Sections
<b>Landscape and Nature</b>	
	ssi
	Special_Protection_Area
	Wildlife Significance
	Local Nature Reserves
	ssi
<b>Historic Environment</b>	
<b>Listed Buildings</b>	
	Region
	Region
	Region
	Ancient Monuments
	Conservation Areas_Pre 74
	Conservation Areas