

Land East of Leeds Road,
Chidswell, Dewsbury
Landscape Character
Assessment

Site ID: MX1905



**KIRKLEES COUNCIL
LANDSCAPE ARCHITECTS**

SUMMER 2015

Landscape Character Assessment

2

Introduction

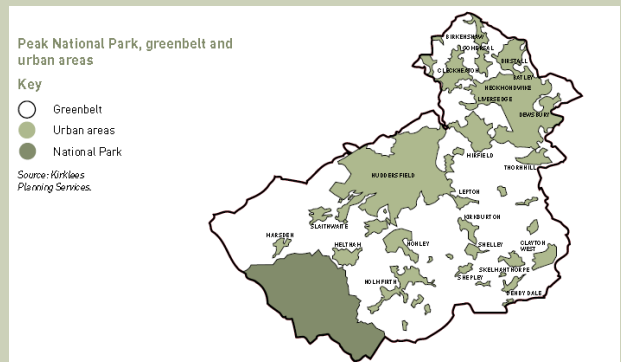
Background

The Kirklees district is situated in the south west of West Yorkshire, and is bounded by the boroughs of Calderdale and Bradford to the north, Leeds and Wakefield to the east and the Peak District National Park to the south—and Greater Manchester to the west.

Kirklees occupies an area of approximately 409 square kilometres, making it the 3rd largest metropolitan district in terms of area.

Although Kirklees is comprised of urban areas, including Huddersfield, Dewsbury, Mirfield, Batley, Marsden and Holmfirth, there are extensive swathes of countryside within the district, the majority of which are designated as Green Belt.

11% (4,574 hectares) of the borough is located within the Peak District National Park.



The objectives of the landscape assessment is to...

(i) describe and analyse the landscape character of a specific area identifying individual landscape types and those features/elements which characterise them;

(ii) provide a landscape framework to:

- guide and inform those responsible for development, landscape change and the management of landscape;
- seek to conserve and enhance the characteristic landscape types of the area;
- seek to avoid management methods and forms of development which would be detrimental to landscape character;
- specify measures to meet land management objectives;
- identify areas where little or no original fabric remains, where there are opportunities to create new landscapes.

(iii) identify the factors which have had an influence upon landscape change in the past and those that are likely to do so in the future, in making recommendations on how to respond to these changes;

(iv) have regard to local perceptions of landscape both past and present, 'sense of place' and areas of local landscape value.

Landscape Character Assessment

3

Key to Landscape types

Fringe farming	
Traditional farming	
Open plateau	
Maintained grassland parkland	
Valley side	
Woodland development	
Woodland brownfield	
Industrial	

Methodology

Landscape Character Assessment is a standard methodology for identifying, describing, classifying and mapping what is distinctive about our landscapes. It shows us their variety, and helps us to understand what makes one landscape different from another.

This Landscape Character Assessment has been produced following nationally recognised guidelines.

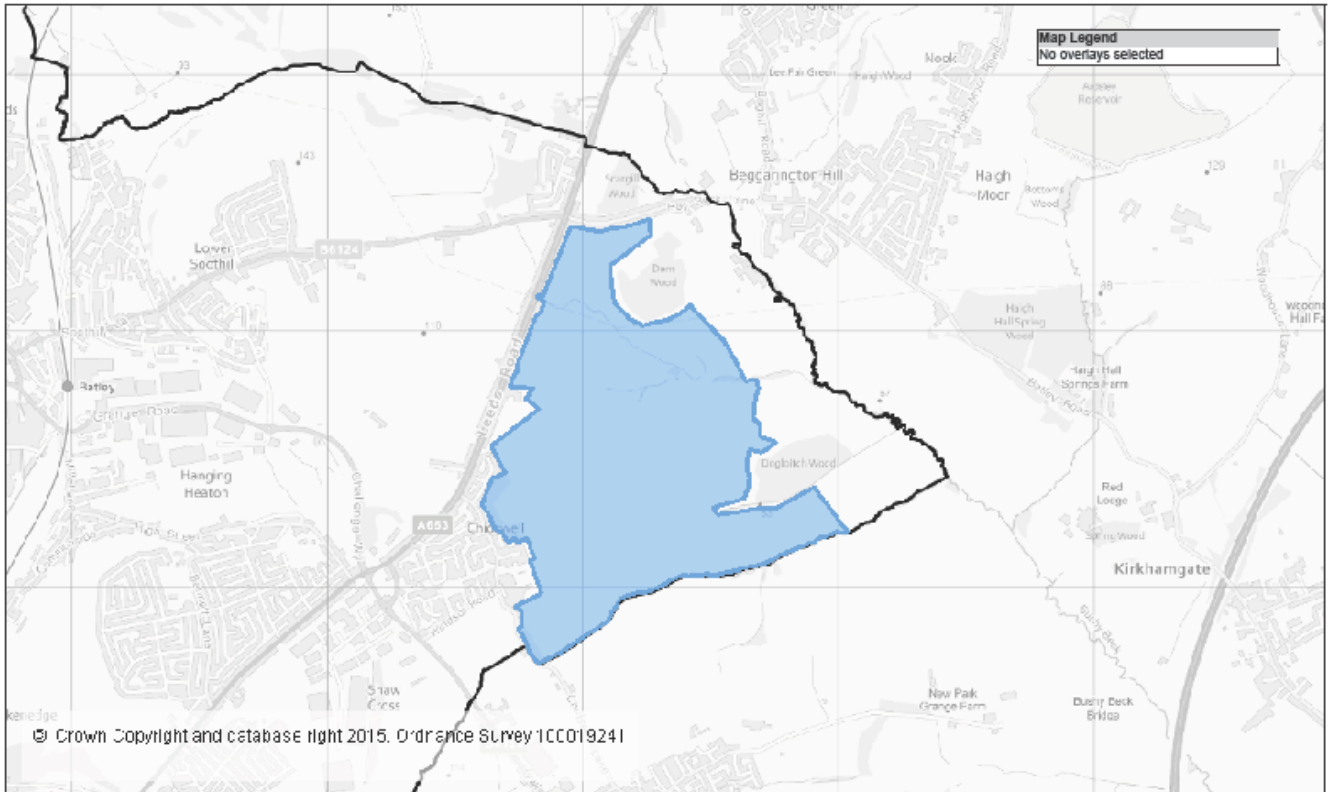
The methodology follows three steps;

- i) collection and review of data as a desk study, giving a general preliminary indication of landscape character areas or types
- ii) a period of field study recording both objective data and subjective responses to the landscape itself and testing the draft character areas;
- iii) an analysis and description of the collected information in the form of the report, with recommendations such as landscape guidelines or planning policy guidance, as required.

Context plan

Land East of Leeds Road, Chidswell, Dewsbury

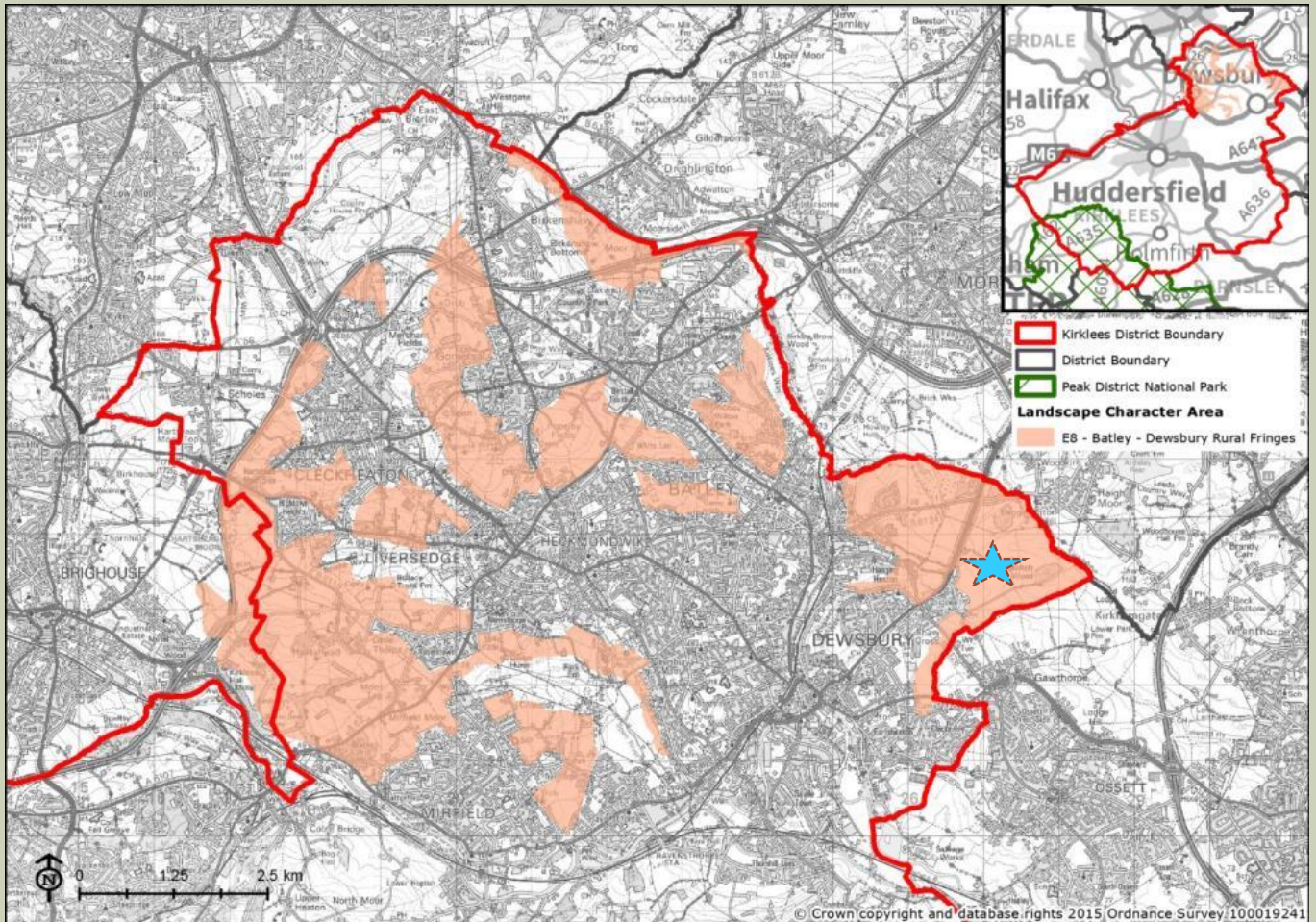
4



Local Character Profile plan

Land East of Leeds Road, Chidswell, Dewsbury

5

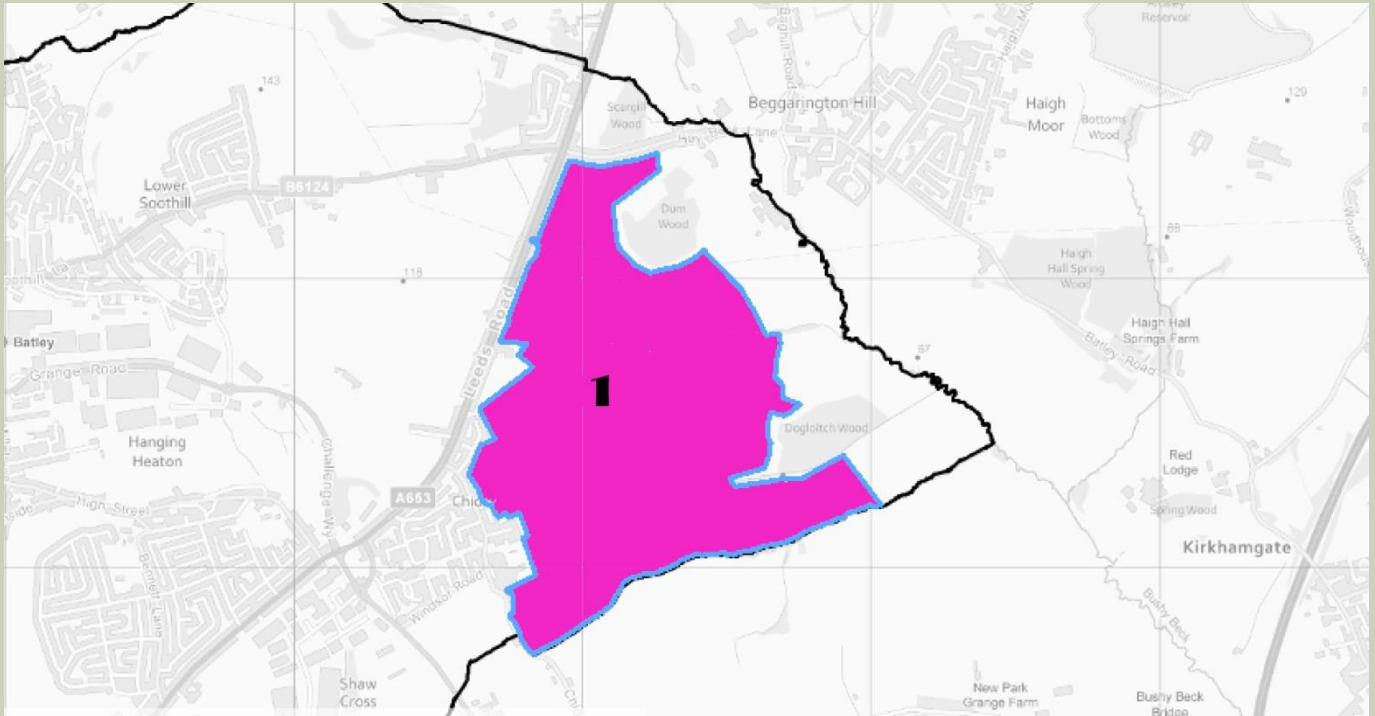


Local Character Profile area LCA E8: Batley – Dewsbury Rural Fringes

Landscape Types plan

Land East of Leeds Road, Chidswell, Dewsbury

6



An area of enclosed countryside, hidden behind existing development along Leeds Road, Shawcross.

It lies within the Local Character Profile area LCA E8: Batley – Dewsbury Rural Fringes, National Character Area Profile No. 37 - Yorkshire Southern Pennine Fringe

The area consists of 1 landscape type.

1-fringe Farming

Landscape Character area Summary

Land East of Leeds Road, Chidswell, Dewsbury

7

- **Physical influences**

- **Topography**

- The dominant landscape characteristic in this area is low lying topography, which gently slopes up to the south.

- **Geology**

- "Bedrock geology consists of the Pennine Coal Measures formation typical of much of the District, with areas of alluvium deposits associated with watercourses." - **Kirklees Landscape Character Area E8 Batley and Dewsbury Rural Fringes**

- **Ecological influences**

- "Varied tree cover, with trees in shelterbelts, along field boundaries and some areas of broadleaved woodland, which follow streams." – **KLCA-E8**
- "Some of the areas of broadleaved woodland are also locally important for wildlife, including Dogloitch Wood and Dum Wood." (both outside the site) – **KLCA-E8**

- **Human influences**

- The area has historically been used for traditional/arable farming. The site is bounded to the east by Leeds Road and residential settlement runs along the road corridor. Shawcross conurbation lies to the south west corner of the site. Public rights of way criss-cross the site area; there are electricity pylons traversing the site along the skyline.

- **Past settlement**

- There is no evidence of past settlement on this site.

- **Industrial patterns**

- There is no evidence of industry former or present on the site.

- **Visual Character**

- The visual character is of encapsulated countryside. Within a short distance of walking between the houses, you have an immediate feeling of being in a landscape with gently rolling green fields, hedgerows and tree-lined boundaries that give a rural feeling character.

Landscape Type 1.

Fringe farming

8

• **Key Characteristics**

- Mature Hedgerows, arable crop fields, sporadic trees within boundaries, clusters of trees. Informal and formal country tracks/lanes.

• **Landform**

- Very gentle incline to the west.

• **Vegetation**

- Arable crop fields dominate, with mature hedgerows of mainly native species. The hedgerows are interspersed with sporadic trees, growing up through the hedgerows.

• **Tree cover**

- Clusters of trees within the site.

• **Land Use**

- Recreational use by walkers. Various footpaths run through the site with four intersecting rights of way crossing through the site.

• **Enclosure and views**

- Views to the north and west are partly blocked by housing which edge the site. Wider views are visible from within the site to the east and south.

• **Settlement and buildings**

- No settlement on the site.

• **Transport and Access**

- Access through the site is via various public rights of way as follows:
BAT/49/10
BAT/50/20
BAT/51/10, 20 &30
BAT/52/10
DEW/146/10
DEW/150/10
DEW/151/10 & 20
(Different sections of four main paths)
- There is no vehicular access through the site other than for farm vehicles along private tracks.

• **Landscape condition**

- The site condition is moderate with the site mainly consisting of arable and fallow fields with hedgerows. The hedgerows are reasonably well maintained. The site is adjacent to two blocks of ancient woodland (just outside the site).

Landscape Type 1.

Fringe farming

9

- **Recreational**
- The only recreational use is walkers and the odd biker using the public rights of way.
- **Noise**
- Very little traffic noise can be heard from within the site despite it's close proximity to Leeds Road. The dominant sound is of bird song.
- **Historical cultural**
- The site has been used as farming land
- **Subjective description.**
- There is a feeling of enclosure and escapism from the hustle and bustle of town. The mature hedgerows, tree boundaries and views give a rural character



Typical images of landscape type 1 

Landscape Type 1.

Fringe farming

10

Main strategies

Conserve where landscape character is strong, in good condition and has features, which distinguish the area from other areas.

Restore where the underlying character is still reasonably strong but the overall structure and individual elements and features are in decline.

Enhance where the underlying character is weak with no clear defining structure, and where positive action is needed to create an improved landscape structure.

Create where there is opportunity for a radical change to the existing landscape.

Condition / character matrix



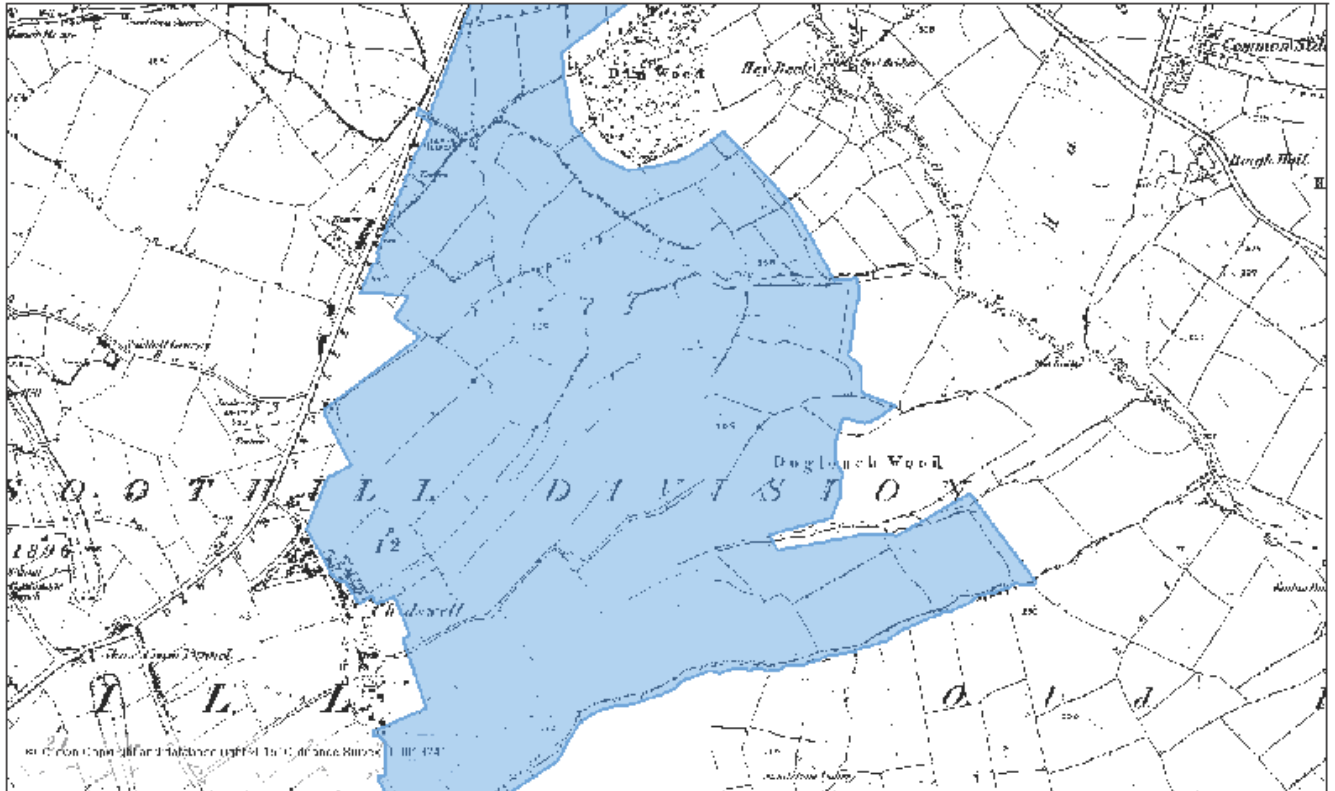
Conclusion:

The area is of moderate character, and declining condition, the character is defined by the mature hedgerows and narrow country tracks. The character could be strengthened through sensitive development, incorporating local vernacular, materials and retaining the hedgerows and tree clusters as much as possible. Views can be maintained through the site to give the feeling of the countryside still flowing through the development and not become inward looking. Retain and improve permeability and access through the site.

Condition	Good	Strengthen	Strengthen And Conserve	Conserve
	Declining	Strengthen And Enhance	Conserve And Enhance	Conserve And Restore
	Poor	Creation	Restore And Enhance	Restore
		Weak	Moderate	Strong
		Character		

Historical Plans

11



Kirklees

Kompass
GIS and Mapping Solutions

Tel: 01484 221757 (internal 060 1757)
E-Mail: maps@kirklees.gov.uk

Land East of Leeds Road, Chidswell, Dewsbury 1854

0 m 300 m 600 m

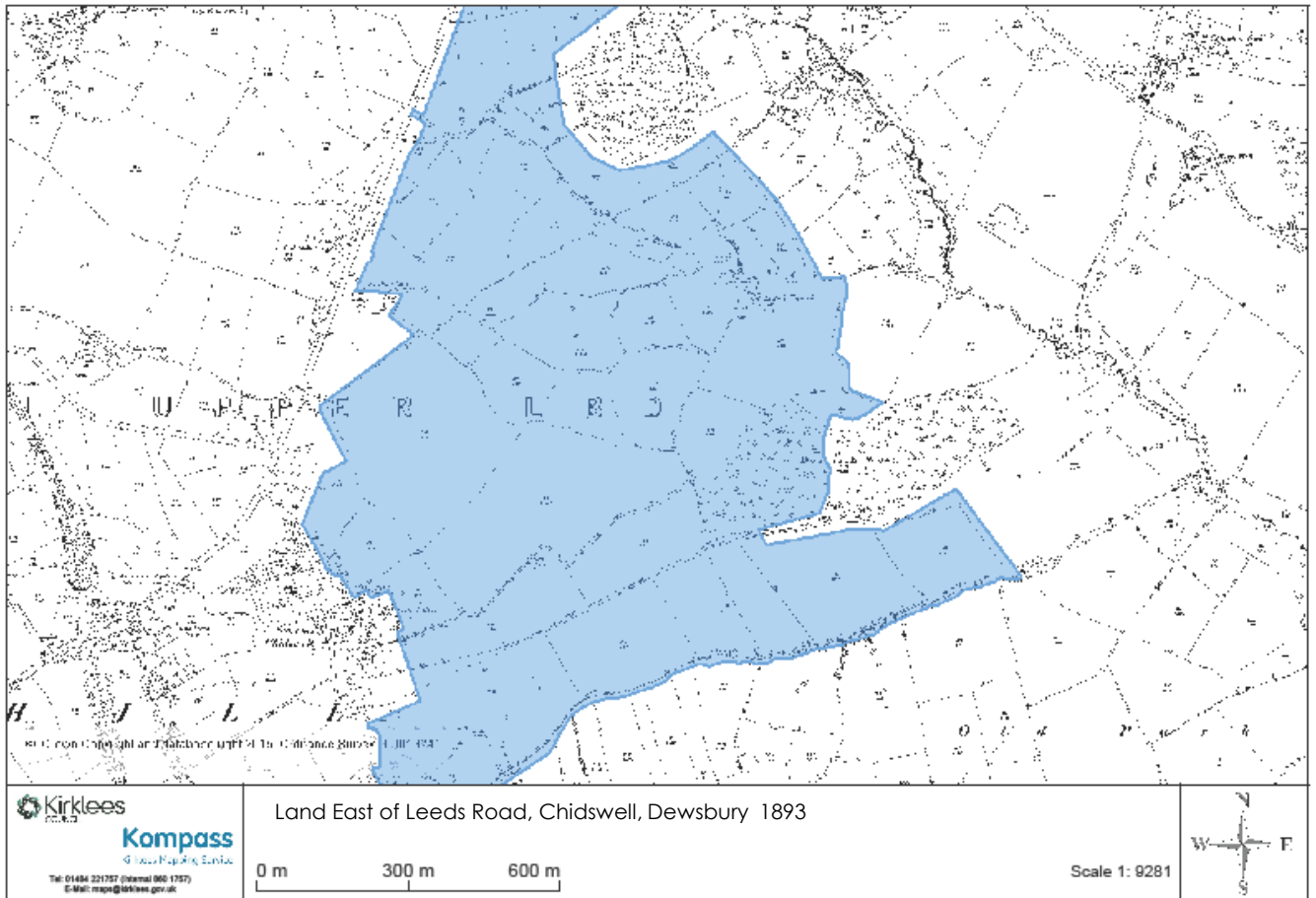
Scale 1: 9281



1854

Historical Plans

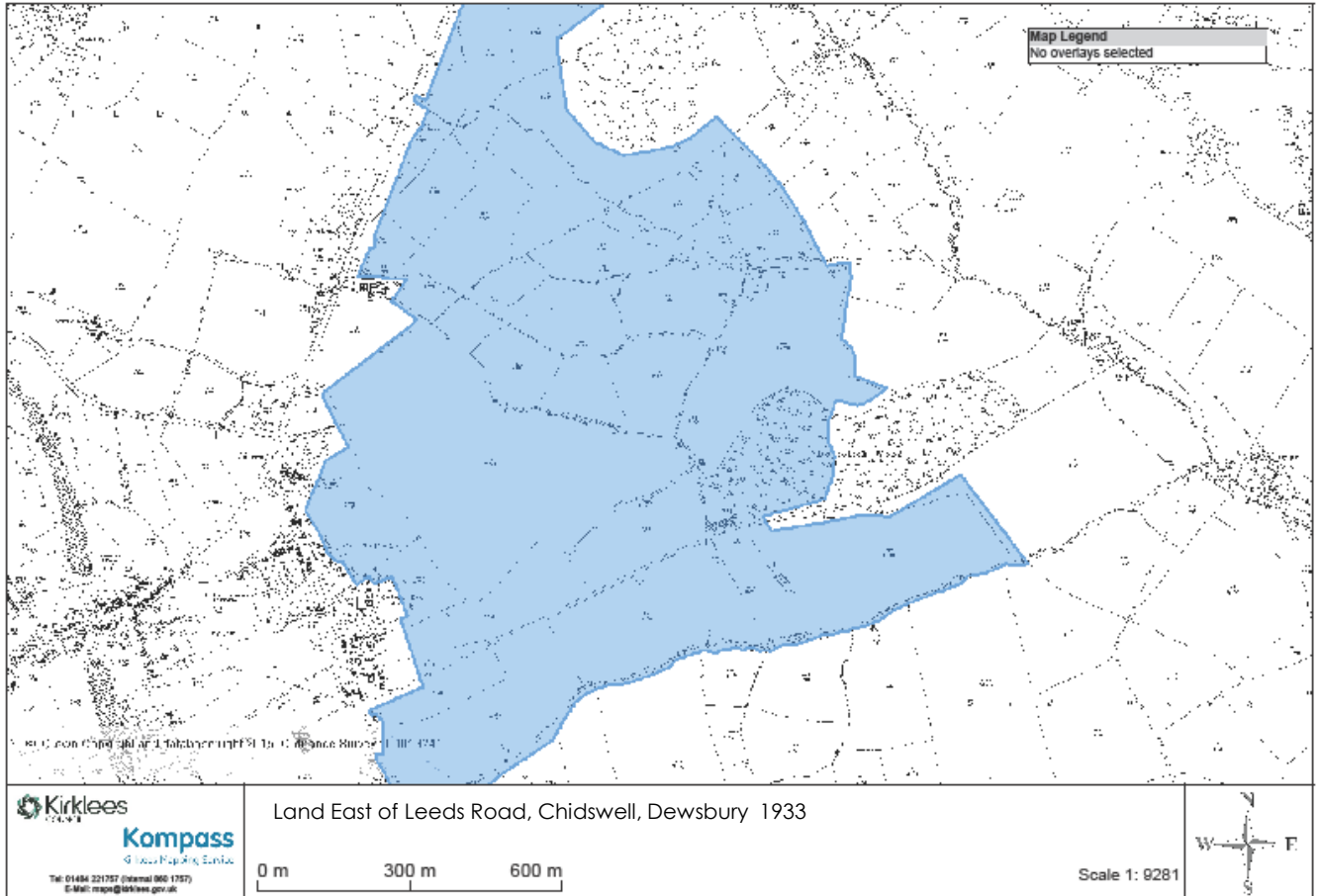
12



1893

Historical Plans

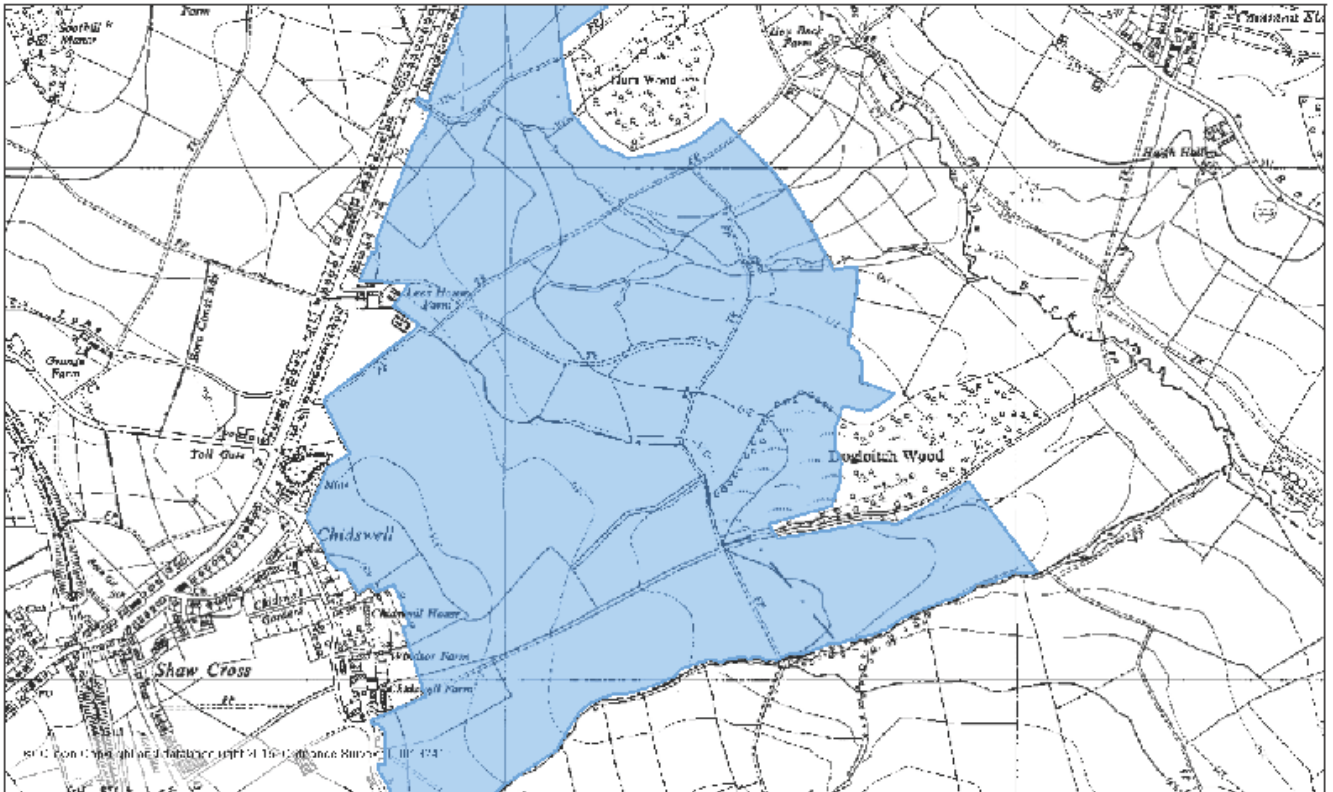
13



1933

Historical Plans

14



Kirklees

Kompass
GIS and Mapping Services

Tel: 01484 221757 (internal 000 1757)
E-Mail: maps@kirklees.gov.uk

Land East of Leeds Road, Chidswell, Dewsbury 1955

0 m 300 m 600 m

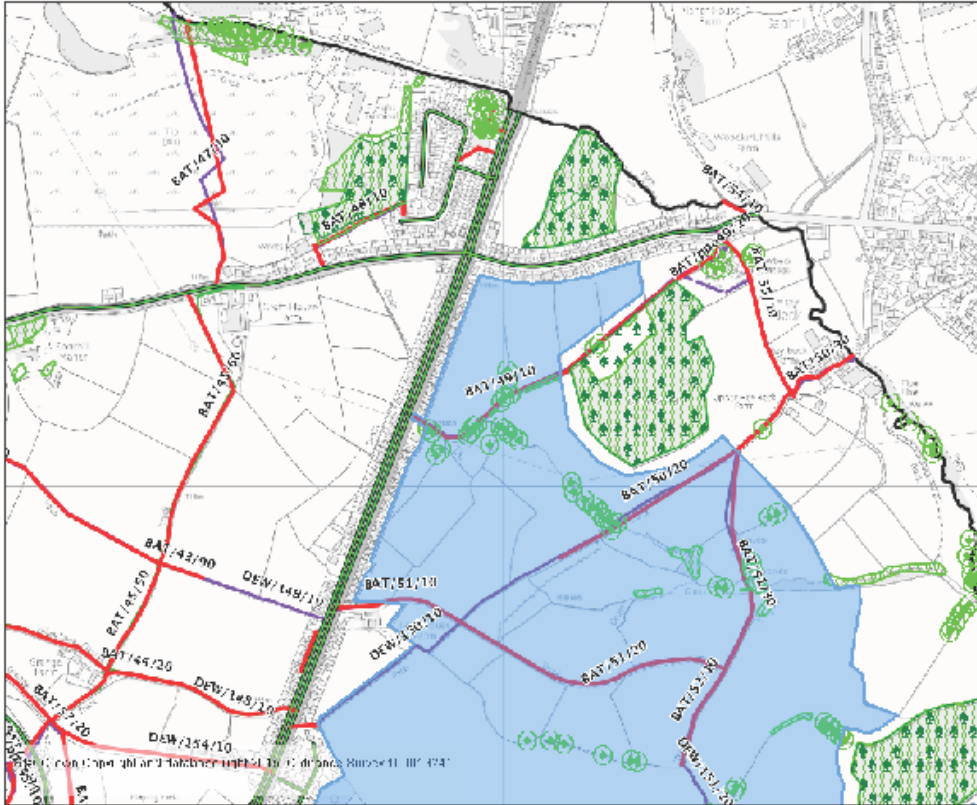
Scale 1: 9281



1955

Information Plan –North Land East of Leeds Road, Chidswell, Dewsbury

15



Map Legend	
Tree Preservation Orders	
[Green hatched box]	Ancient Woodlands_2012
[Blue hatched box]	Conservation Areas
[Purple hatched box]	High Hedge
[Green circle]	TPO Areas
Adopted Register	
Highway Register	
[Green line]	Adopted
[Brown line]	Part Adopted
[Red line]	Private
[Black line]	all others
PROW - Current	
Claimed Paths	
[Red line]	BOAT
[Green line]	Bridleway
[Purple line]	Footpath
[Black line]	Restricted Byway
[Black line]	all others
PROW	
[Green line]	Bridleway
[Brown line]	Byway
[Purple line]	Footpath
[Black line]	all others
[Blue line]	Pennine Way
[Blue line]	PW_Sections
Landscape and Nature	
[Green hatched box]	ssi
[Blue hatched box]	Special_Protection_Area
[Blue hatched box]	Wildlife Significance
[Yellow hatched box]	Local Nature Resrves
[Red hatched box]	sssi
Flooding	
[Blue circle]	Reservoirs
[Blue square]	EIA_Major_Scale_Development_Ca
[Green square]	Minor_Household_Development_Ca
Historic Environment	
Listed Buildings	
[Blue square]	Region
[Blue square]	Region
[Red square]	Region
[Purple square]	Ancient Monuments
[Brown square]	Conservation Areas_Pre 74
[Blue square]	Conservation Areas

Kirklees
15498
Kompass
GIS and Mapping Services
Tel: 01484 221757 (Internal 060 1757)
E-Mail: maps@kirklees.gov.uk

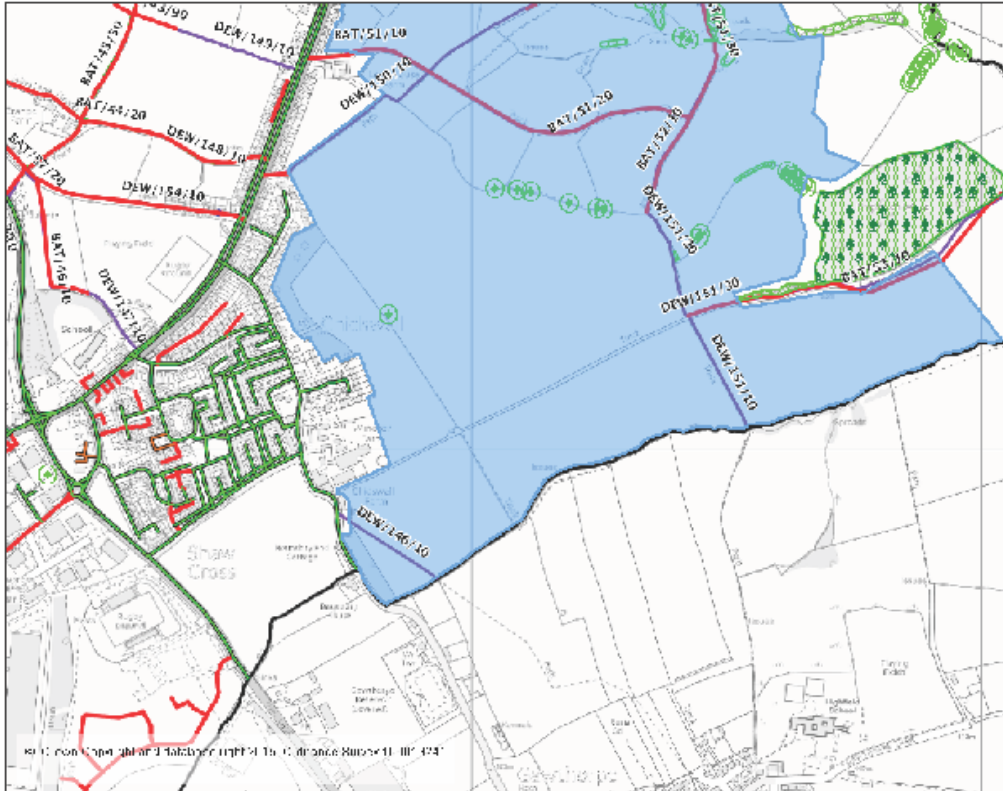
Land East of Leeds Road, Chidswell, Dewsbury- North of site

0 m 300 m 600 m

Information Plan-South

Land East of Leeds Road, Chidswell, Dewsbury

16



Map Legend	
Tree Preservation Orders	
	Ancient Woodlands_2012
	Conservation Areas
	High Hedge
	TPO Areas
Adopted Register	
Highway Register	
	Adopted
	Part Adopted
	Private
	all others
PROW - Current	
Claimed Paths	
	BOAT
	Bridleway
	Footpath
	Restricted Byway
	all others
PROW	
	Bridleway
	Byway
	Footpath
	all others
	Pennine Way
	PW_Sections
Landscape and Nature	
	ssi
	Special_Protection_Area
	Wildlife Significance
	Local Nature Reserves
	ssi
Flooding	
	Reservoirs
	EIA_Major_Scale_Development_Ca
	Minor_Household_Development_Ca
Historic Environment	
Listed Buildings	
	Region
	Region
	Region
	Ancient Monuments
	Conservation Areas_Pre 74
	Conservation Areas

Kirklees
Kompass
 Ground Mapping & Analysis
 Tel: 01484 221757 (internal 060 1757)
 E-Mail: maps@kirklees.gov.uk

Land East of Leeds Road, Chidswell, Dewsbury -South of site

0 m 300 m 600 m