

Land north of Bradley Road,
Bradley, Huddersfield
Landscape Character
Assessment

Site ID: H1747



**KIRKLEES COUNCIL
LANDSCAPE ARCHITECTS**

SUMMER 2015

Landscape Character Assessment

Introduction

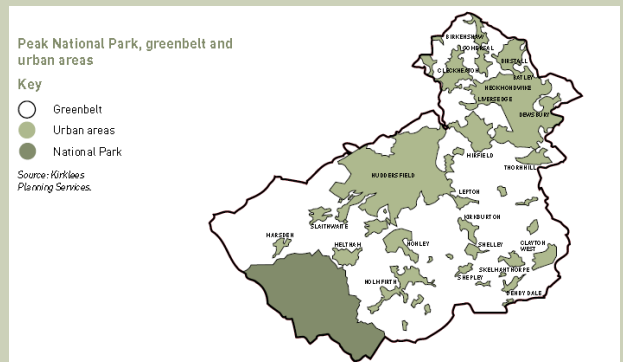
Background

The Kirklees district is situated in the south west of West Yorkshire, and is bounded by the boroughs of Calderdale and Bradford to the north, Leeds and Wakefield to the east and the Peak District National Park to the south and Greater Manchester to the west.

Kirklees occupies an area of approximately 409 square kilometres, making it the 3rd largest metropolitan district in terms of area.

Although Kirklees is comprised of urban areas, including Huddersfield, Dewsbury, Mirfield, Batley, Marsden and Holmfirth, there are extensive swathes of countryside within the district, the majority of which are designated as Green Belt.

11% (4,574 hectares) of the borough is located within the Peak District National Park.



The objectives of the landscape assessment is to...

(i) describe and analyse the landscape character of a specific area identifying individual landscape types and those features/elements which characterise them;

(ii) provide a landscape framework to:

- guide and inform those responsible for development, landscape change and the management of landscape;
- seek to conserve and enhance the characteristic landscape types of the area;
- seek to avoid management methods and forms of development which would be detrimental to landscape character;
- specify measures to meet land management objectives;
- identify areas where little or no original fabric remains, where there are opportunities to create new landscapes.

(iii) identify the factors which have had an influence upon landscape change in the past and those that are likely to do so in the future, in making recommendations on how to respond to these changes;

(iv) have regard to local perceptions of landscape both past and present, 'sense of place' and areas of local landscape value.

Landscape Character Assessment

3

Key to Landscape types

Fringe farming



Traditional farming



Open plateau



Maintained grassland parkland



Valley side



Woodland development



Woodland brownfield



Industrial



Methodology

Landscape Character Assessment is a standard methodology for identifying, describing, classifying and mapping what is distinctive about our landscapes. It shows us their variety, and helps us to understand what makes one landscape different from another.

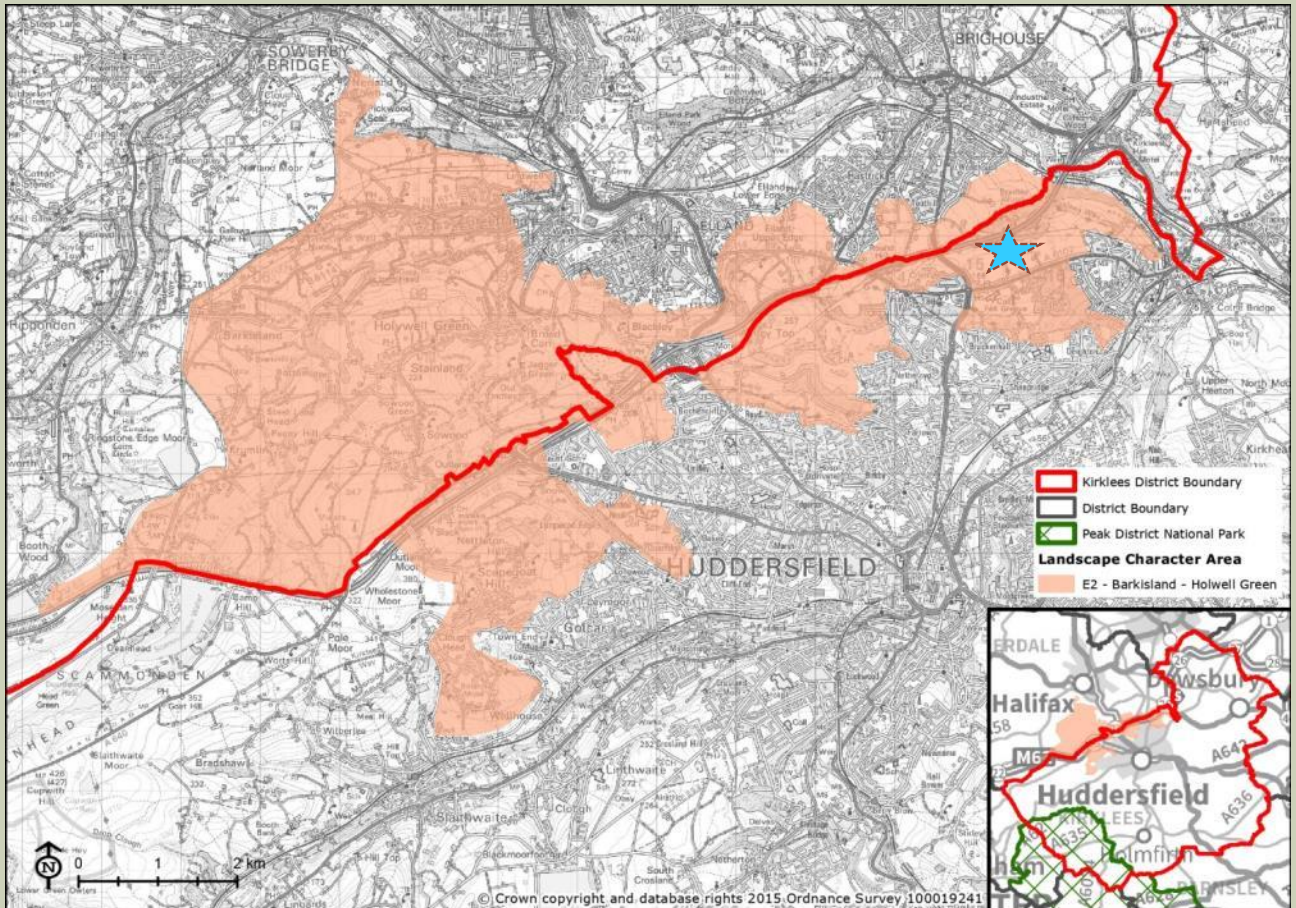
This Landscape Character Assessment has been produced following nationally recognised guidelines.

The methodology follows three steps;

- i) collection and review of data as a desk study, giving a general preliminary indication of landscape character areas or types
- ii) a period of field study recording both objective data and subjective responses to the landscape itself and testing the draft character areas;
- iii) an analysis and description of the collected information in the form of the report, with recommendations such as landscape guidelines or planning policy guidance, as required.

Local Character Profile Plan

4

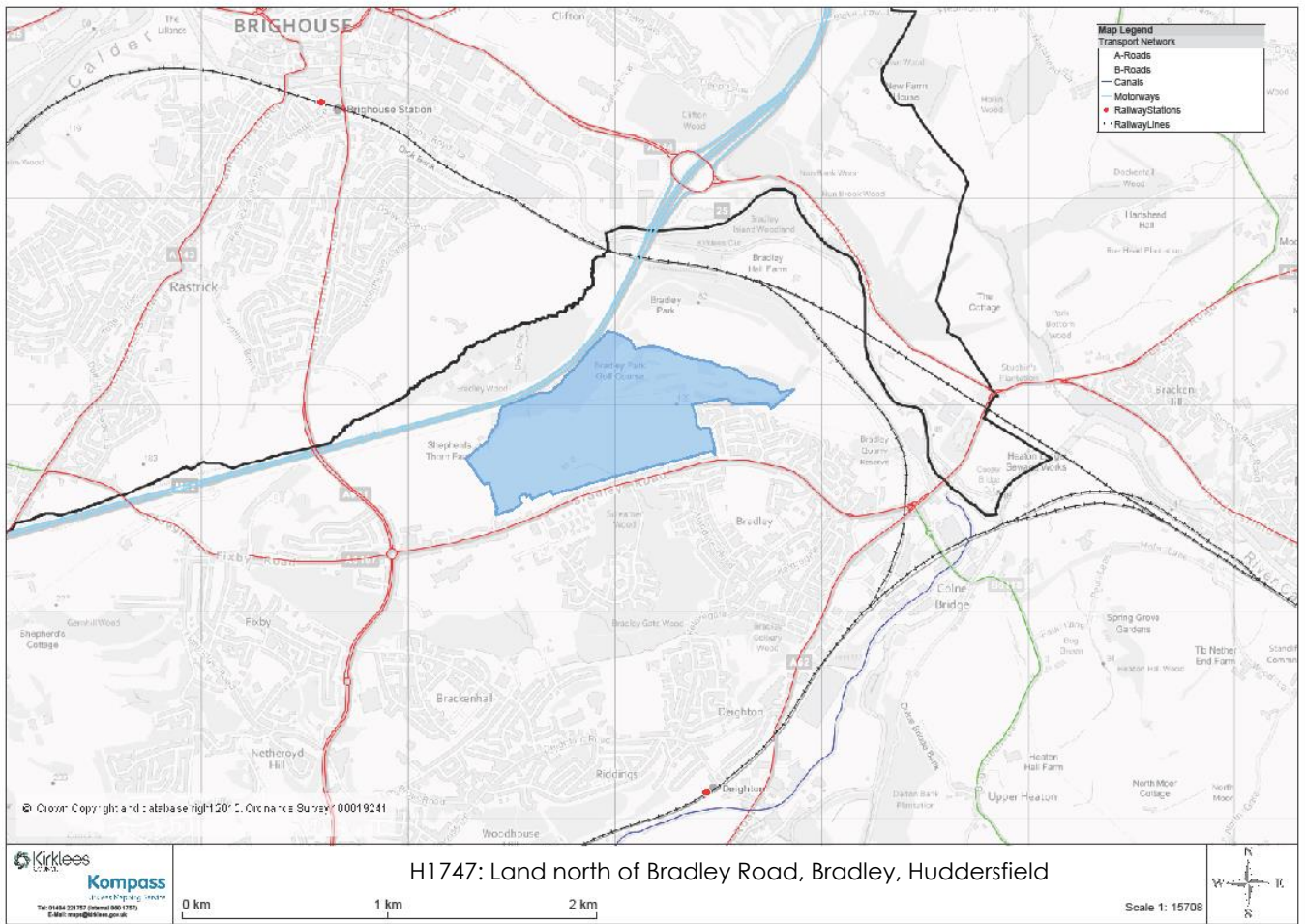


Local Character Profile area LCA E2: Barkisland –Holwell Green
National Character Area Profile No. 37 - Yorkshire Southern Pennine Fringe

Context plan

Land north of Bradley Road, Bradley, Huddersfield

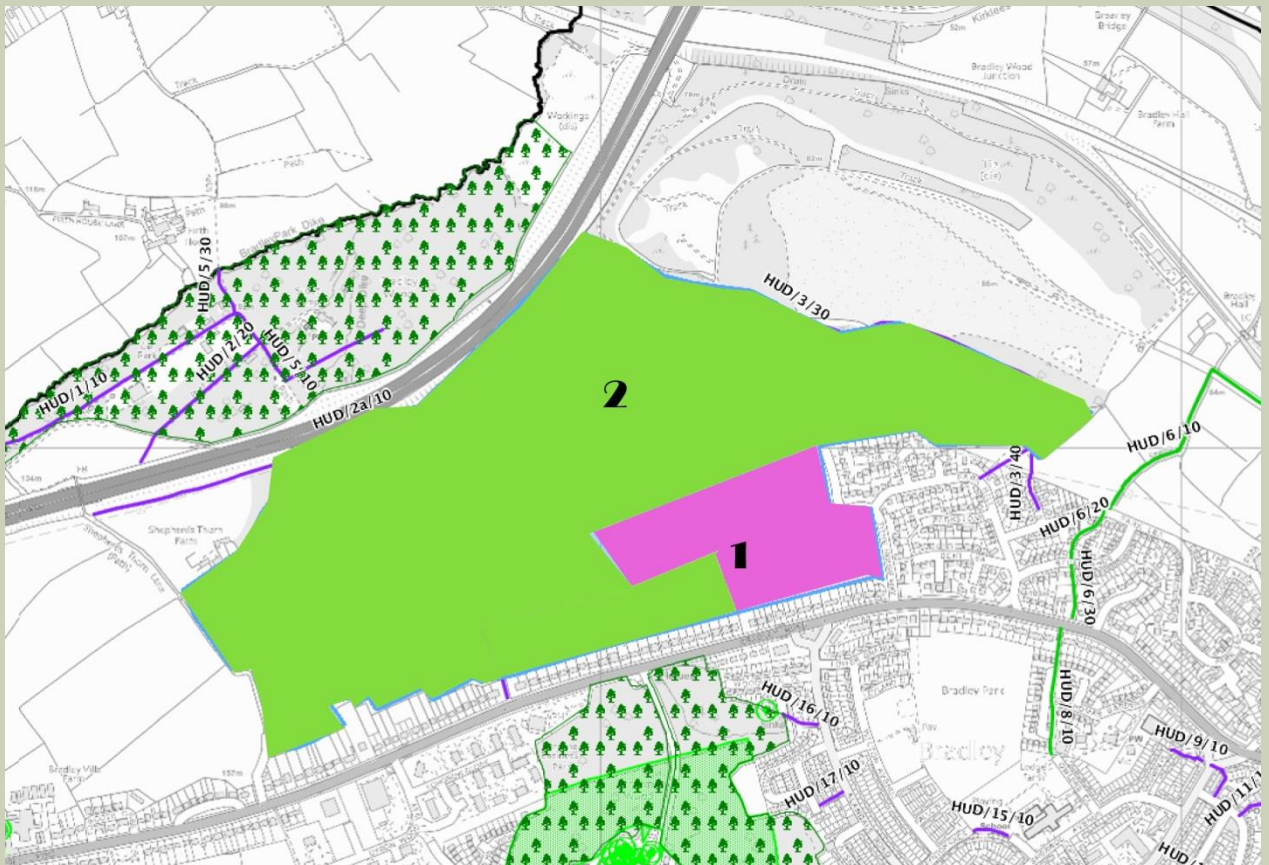
5



Landscape types plan

Land north of Bradley Road, Bradley, Huddersfield

6



This area is in a pocket of land bordered on the east by existing housing estates. To the north lies the M62 motorway and Bradley Road to the south.

It lies within the Local Character Profile area LCA E2: Barkisland –Holwell Green, National Character Area Profile No. 37 - Yorkshire Southern Pennine Fringe

The area has been divided into 2 separate local character areas

1- Fringe farming



2- Managed grass parkland



Landscape Character area Summary

7

- **Physical influences**

- **Topography**

- The dominant landscape characteristic in this area is low lying topography, which gently slopes up to the south. The site lies within the wider valley of the River Calder, to the east. As stated in the LCA E2: Barkisland-Holwell Green
- "Gently undulating plateaux often sloping up to the higher moorlands nearby..."

- **Geology**

- The general geology of the area is mainly millstone grit overlaid with sandstone and coal deposits.
- "Landscape underlain by carboniferous millstone grit and sandstone." -LCA

- **Ecological influences**

- The site is bordered to the north by Bradley Wood which is designated as ancient woodland.

- **Human influences**

- The area is associated with the existing residential areas, bordering the area. Public access via Public rights of way cut through the site, HUD/4/10, HUD/3/10, HUD/3/20, HUD/3/30.
- The area is currently used for recreation as a public golf course.

- **Past settlement**

- "*Distinctive settlement character of scattered farms, individual rural houses and groups of dwellings clustered into hamlets and small villages*" --LCA.

- **Industrial patterns**

- There is some evidence on the site of historical mining activity.

- **Visual Character**

- The visual character within the site is of well maintained grass parkland with sporadic mature trees, bordered on all sides with mature woodland. "Proximity of urban centres exerts an influence on landscape character with urban fringe land uses evident in many areas." --LCA

Landscape Type 1.

Fringe farming

8

- **Key Characteristics**

- The site is bounded to the south by individual residential property development along Bradley Road, and the golf course driving range, with tall conifers planted as a buffer to the northern and western extent.

- **Landform**

- Very gentle incline to the east and north.

- **Vegetation**

- Some ornamental planting and pasture grassland used for horse paddock.

- **Tree cover**

- Minimal tree cover.

- **Land Use**

- Pasture land/grazing

- **Enclosure and views**

- The area is enclosed by the housing to the east and south and views to the east and south are therefore restricted and intermittent.

- **Settlement and buildings**

- Mixed individual properties form a strip of development between Bradley Road and Bradley Park Golf Course.

- **Transport and Access**

- The area is edged by Bradley Road.

- **Landscape condition**

- The landscape is mainly managed grassland and pastoral fields, the landscape condition is good.

Landscape Type 1.

Fringe farming

9

- **Recreational**

- No visible recreational use of this area for the public.

- **Noise**

- The area is adjacent to houses on Bradley Road, and a steady stream of traffic noise can be heard to the southern extents.

- **Historical cultural**

- The adjacent housing has existed in this location from 1930's but has significantly increased from the 1950's onwards.

- **Subjective description.**

- A feeling of being near a busy road, but a that the rural feeling landscape is just close by.



Typical images of landscape type 1



Landscape Type 1.

Fringe farming

10

Main strategies

Conserve where landscape character is strong, in good condition and has features, which distinguish the area from other areas.

Restore where the underlying character is still reasonable strong but the overall structure and individual elements and features are in decline.

Enhance where the underlying character is weak with no clear defining structure, and where positive action is needed to create an improved landscape structure.

Create where there is opportunity for a radical change to the existing landscape.

Condition /character matrix

Conclusion: STRENGTHEN & ENHANCE

**Condition; Declining
Character; Weak**

The area is of weak character and declining condition, the character could be strengthened through sensitive development.

Condition	Good	Strengthen	Strengthen And Conserve	Conserve
	Declining	Strengthen And Enhance	Conserve And Enhance	Conserve And Restore
	Poor	Creation	Restore And Enhance	Restore
		Weak	Moderate	Strong
		Character		

Landscape type 2.

Managed grass parkland

11

- **Key Characteristics**

- Broad open grassland dominates the landscape; the large open grass areas contain sporadic bands of mature trees together with linear planted strips of woodland within the site dividing the golf rides. There is mature ancient woodland edging the site to the north east and west. Electricity pylons are visible which cross the site.

- **Landform**

- Gently undulating from south sloping down to the north.

- **Vegetation**

- Extremely well maintained and trimmed improved grassland. Bands of mature trees in good condition. Mature woodland.

- **Tree cover**

- Bands of tree cover within the parkland but mature woodland belt edges the site to the north.

- **Land Use**

- Recreational use dominates the landscape as it's existing use is as a golf course.

- **Enclosure and views**

- Generally the site is enclosed by mature woodland which blocks most views out of the site. There are some views from the south of the site. The site is enclosed by higher ground along the woodland and motorway to the north.

- **Settlement and buildings**

- No settlement only buildings are club house and associated golf course buildings.

- **Transport and Access**

- Access through site for patrons and via public right of way footpath only for the public, HUD/4/10, HUD/3/10, HUD/3/20, HUD/3/30.

- **Landscape condition**

- Good overall condition.

Landscape type 2.

Managed grass parkland

12

- **Recreational**

- Currently dominated by recreational use as a golf course.

- **Noise**

- Constant stream of low level traffic noise from motorway and birdsong from within the site, together with the golfers and occasional golf buggies/ride on mowers.

- **Historical cultural**

- There is some evidence on the site of historical mining activity.

- **Subjective description.**

- The site feels secluded and enveloping with the woodland on all sides, the sound of birds is apparent, but also a dull stream of noise from the motorway reminds you of your urban fringe location.



Typical images of landscape type 2



Landscape type 2.

Managed grass parkland

13

Main strategies

Conserve where landscape character is strong, in good condition and has features, which distinguish the area from other areas.

Restore where the underlying character is still reasonable strong but the overall structure and individual elements and features are in decline.

Enhance where the underlying character is weak with no clear defining structure, and where positive action is needed to create an improved landscape structure.

Create where there is opportunity for a radical change to the existing landscape.

Condition /character matrix

Conclusion: STRENGTHEN

Condition; Good

Character; Weak

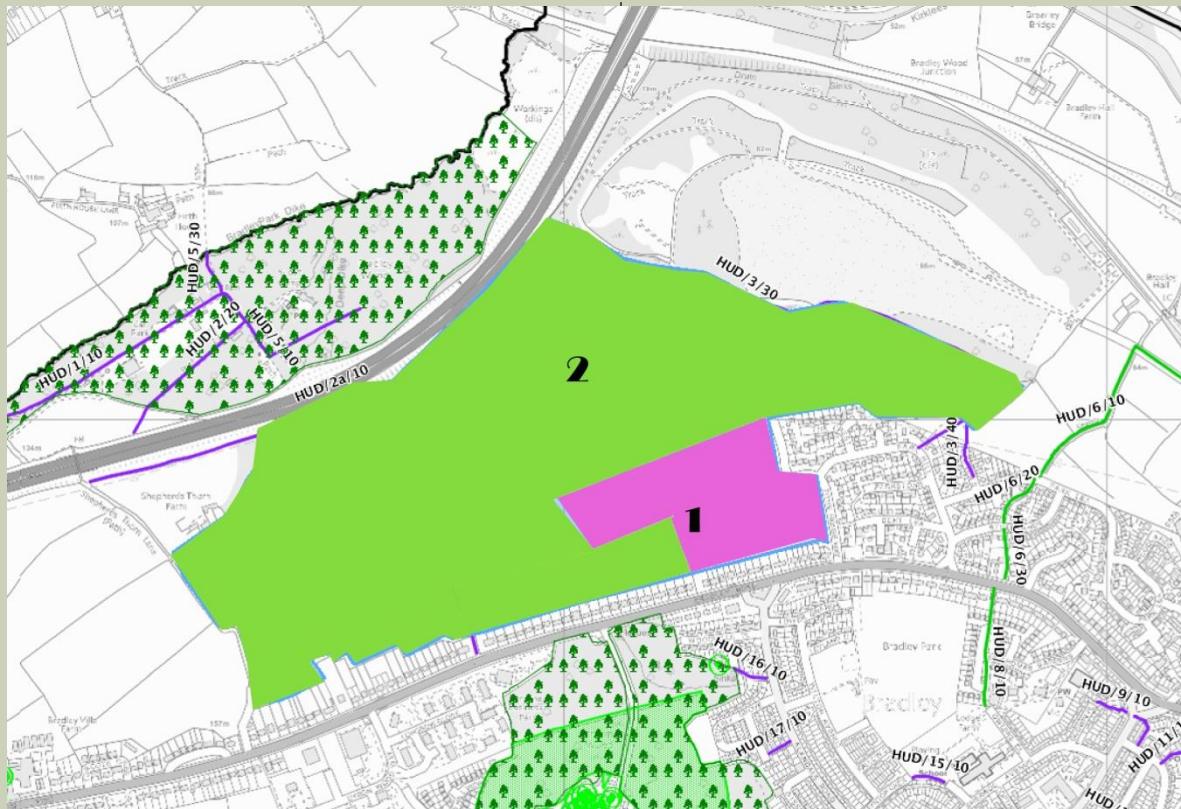
The area is of weak character but good condition, therefore the area would benefit from strengthening in character through sympathetic development and incorporating the local materials.

Condition	Good	Strengthen	Strengthen And Conserve	Conserve
	Declining	Strengthen And Enhance	Conserve And Enhance	Conserve And Restore
	Poor	Creation	Restore And Enhance	Restore
		Weak	Moderate	Strong
		Character		

Conclusions Plan

Land north of Bradley Road, Bradley, Huddersfield

14



Type 1 Conclusion:
Condition; Declining
Character ; Weak
STRENGTHEN & ENHANCE

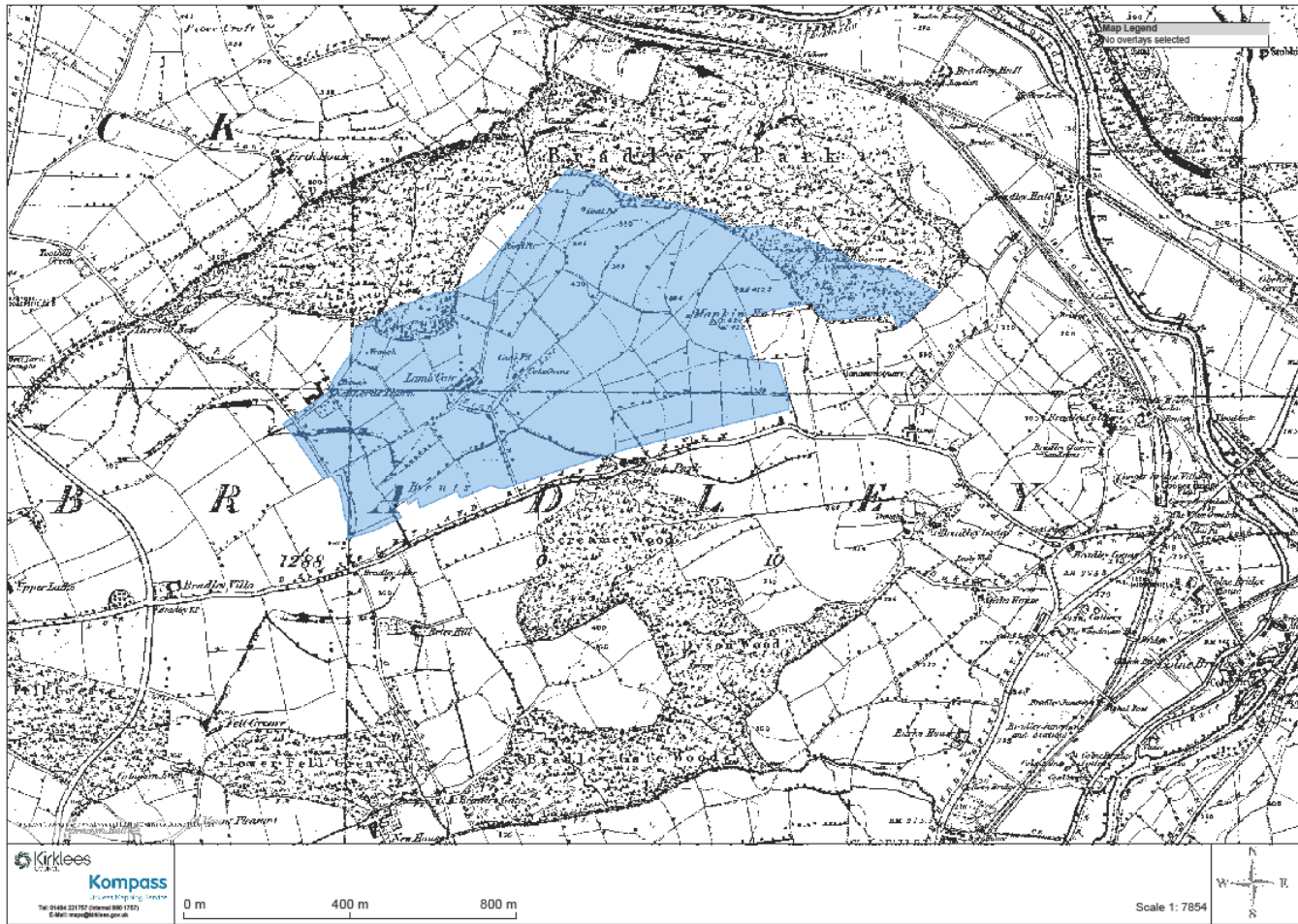
The area is of weak character and declining condition, the character could be strengthened through sensitive development.

Type 2 Conclusion:
Condition; Good
Character ; Weak
STRENGTHEN

The area is of weak character but good condition, therefore the area would benefit from strengthening in character through sympathetic development and incorporating the local materials.

Historical Plans

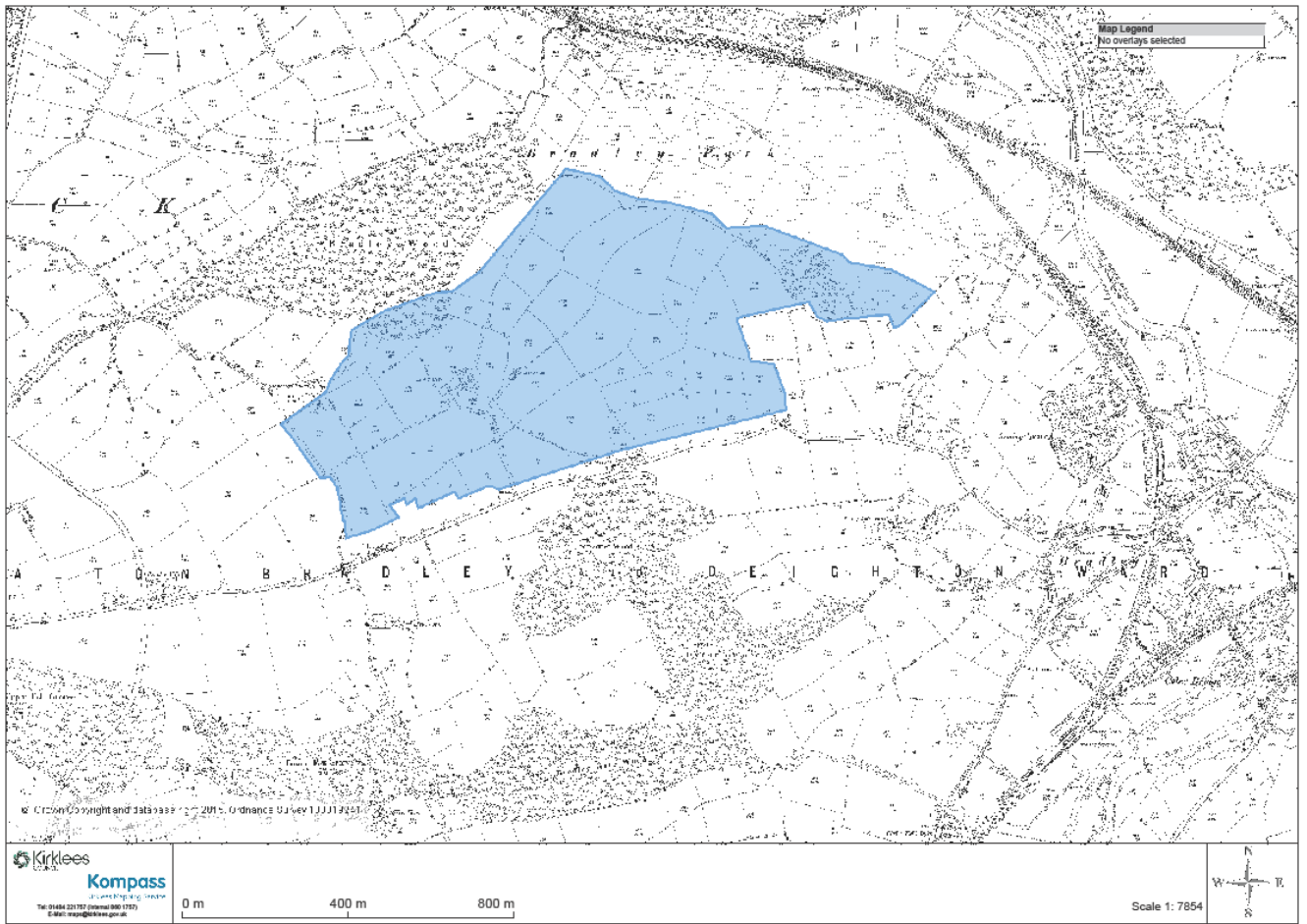
15



1854

Historical Plans

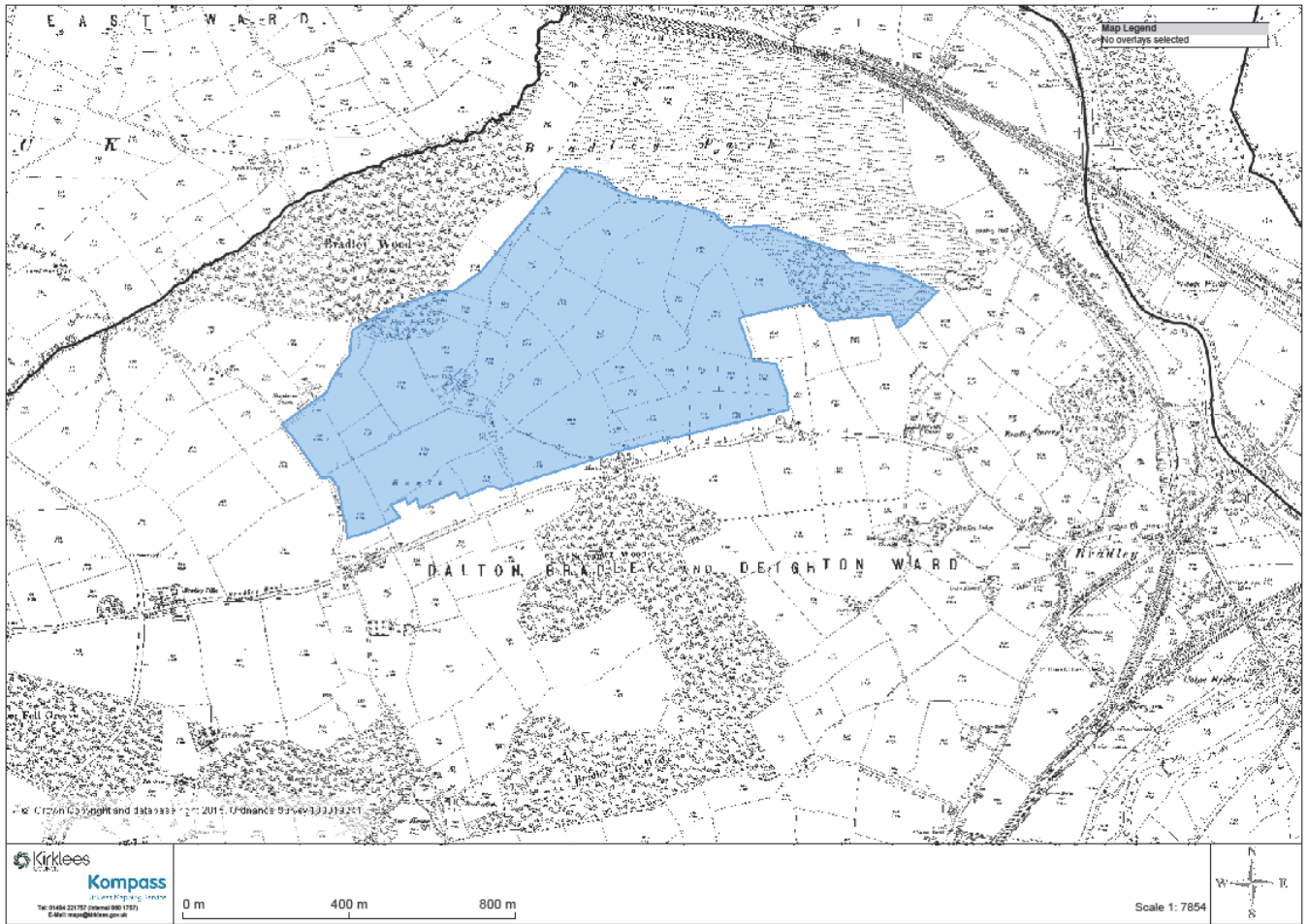
16



1893

Historical Plans

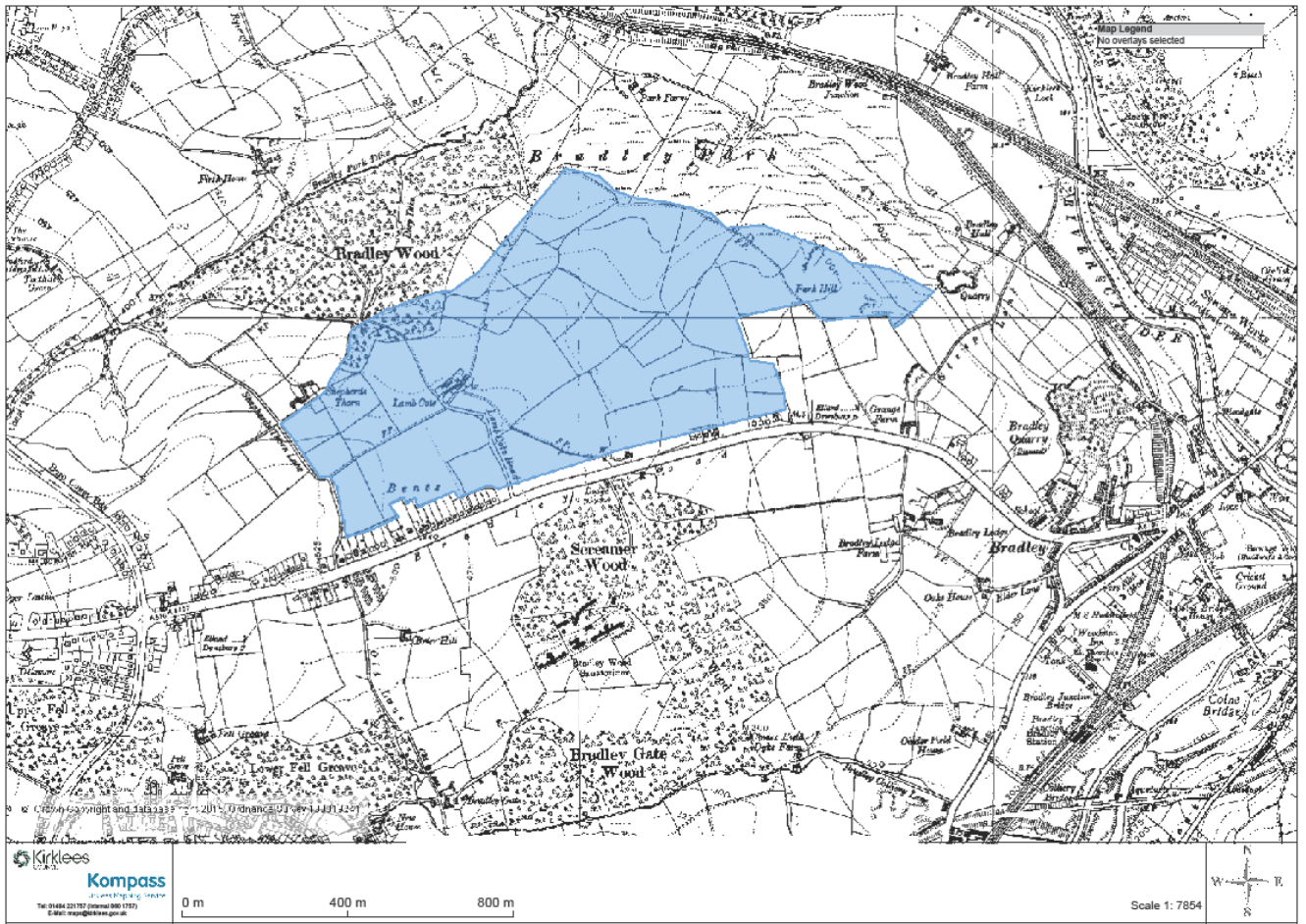
17



1907

Historical Plans

18



1955

Information plan

Land north of Bradley Road, Bradley, Huddersfield

19

