

Land north of Blackmoorfoot Road,  
Crosland Moor, Huddersfield  
**Landscape Character  
Assessment**

Site ID: MX1930



**KIRKLEES COUNCIL  
LANDSCAPE ARCHITECTS**

**SUMMER 2015**

# Landscape Character Assessment

## Introduction

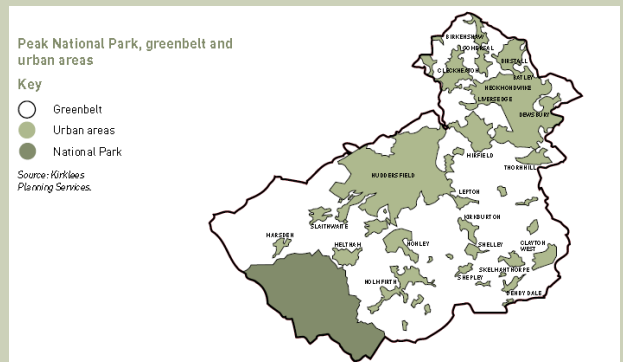
### Background

The Kirklees district is situated in the south west of West Yorkshire, and is bounded by the boroughs of Calderdale and Bradford to the north, Leeds and Wakefield to the east and the Peak District National Park to the south and Greater Manchester to the west.

Kirklees occupies an area of approximately 409 square kilometres, making it the 3<sup>rd</sup> largest metropolitan district in terms of area.

Although Kirklees is comprised of urban areas, including Huddersfield, Dewsbury, Mirfield, Batley, Marsden and Holmfirth, there are extensive swathes of countryside within the district, the majority of which are designated as Green Belt.

11% (4,574 hectares) of the borough is located within the Peak District National Park.



The objectives of the landscape assessment is to...

(i) describe and analyse the landscape character of a specific area identifying individual landscape types and those features/elements which characterise them;

(ii) provide a landscape framework to:

- guide and inform those responsible for development, landscape change and the management of landscape;
- seek to conserve and enhance the characteristic landscape types of the area;
- seek to avoid management methods and forms of development which would be detrimental to landscape character;
- specify measures to meet land management objectives;
- identify areas where little or no original fabric remains, where there are opportunities to create new landscapes.

(iii) identify the factors which have had an influence upon landscape change in the past and those that are likely to do so in the future, in making recommendations on how to respond to these changes;

(iv) have regard to local perceptions of landscape both past and present, 'sense of place' and areas of local landscape value.

# Landscape Character Assessment

3

## Key to Landscape types

Fringe farming



Traditional farming



Open plateau



Maintained grassland parkland



Valley side



Woodland development



Woodland brownfield



Industrial



## Methodology

Landscape Character Assessment is a standard methodology for identifying, describing, classifying and mapping what is distinctive about our landscapes. It shows us their variety, and helps us to understand what makes one landscape different from another.

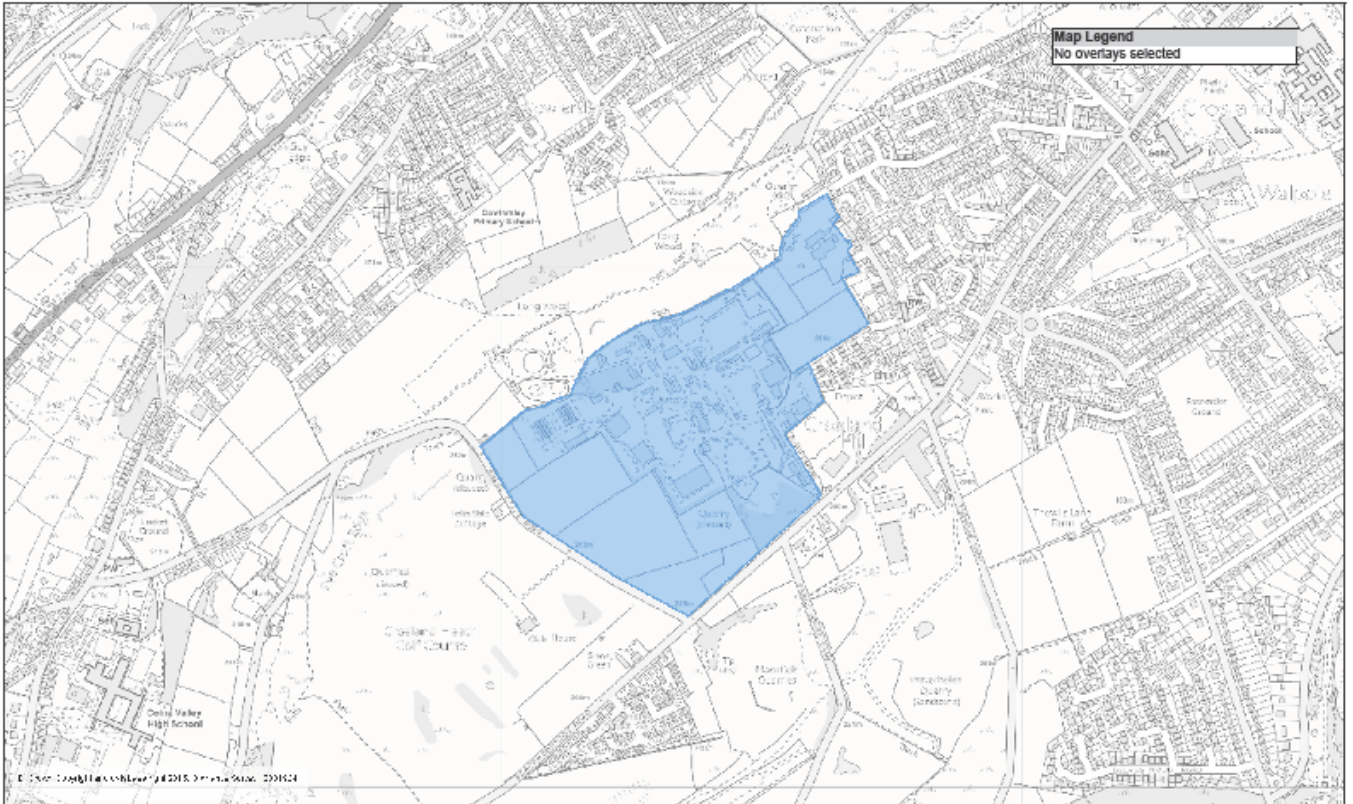
This Landscape Character Assessment has been produced following nationally recognised guidelines.

The methodology follows three steps;

- i) collection and review of data as a desk study, giving a general preliminary indication of landscape character areas or types
- ii) a period of field study recording both objective data and subjective responses to the landscape itself and testing the draft character areas;
- iii) an analysis and description of the collected information in the form of the report, with recommendations such as landscape guidelines or planning policy guidance, as required.

# Context Plan

4



**Kirklees**  
Council  
**Kompass**  
GIS and Mapping Services  
Tel: 01484 221757 (Internal 060 1757)  
E-Mail: [maps@kirklees.gov.uk](mailto:maps@kirklees.gov.uk)

Land north of Blackmoorfoot Road, Crosland Moor, Huddersfield MX1930

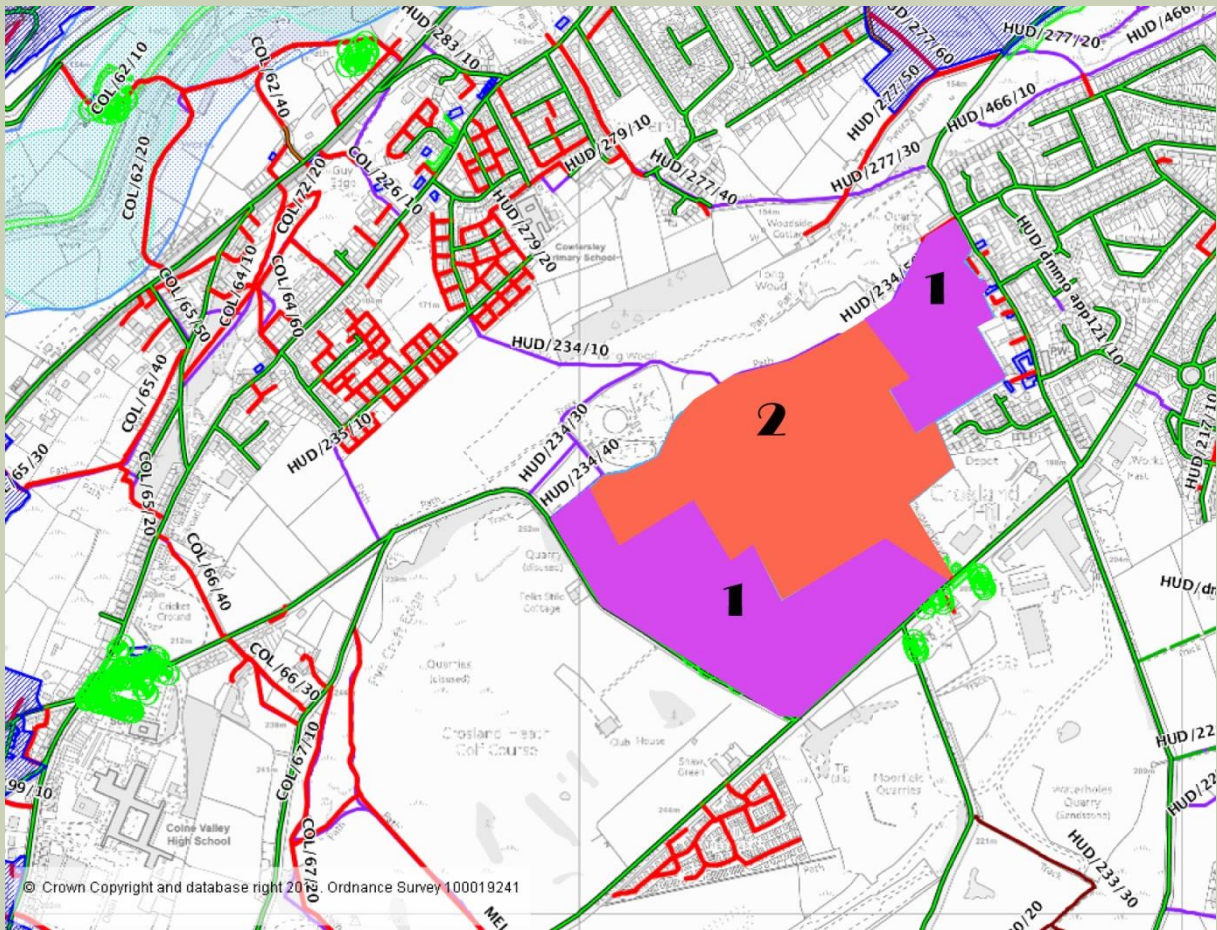
0 m 300 m 600 m

Scale 1: 9281



# Landscape Types Plan

5



This area, is situated at Crosland Hill between Felks Stile Road and Crosland Hill Road with Blackmoorfoot Road along its south eastern edge.

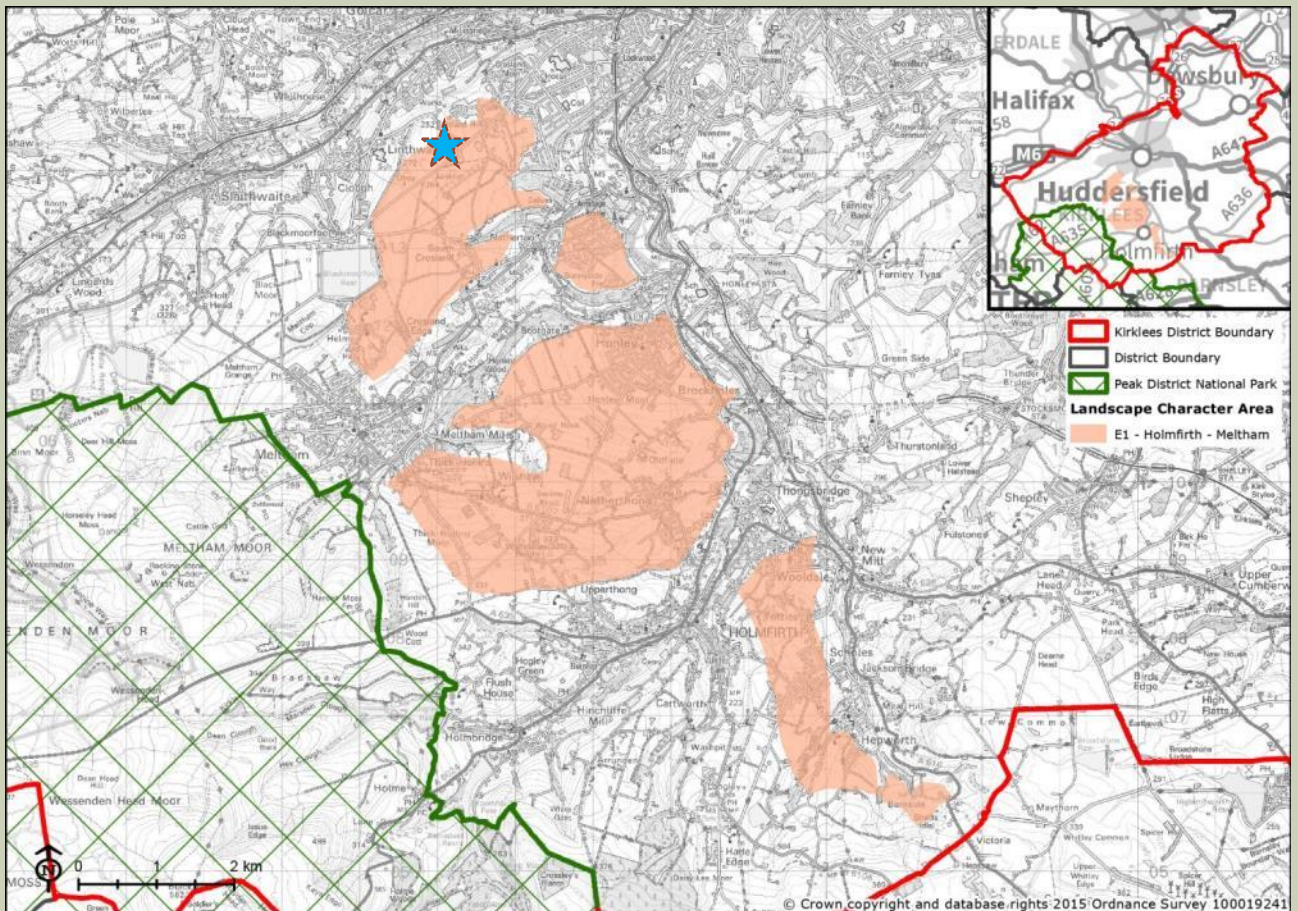
It lies within the Local Character Profile area LCA E1: Holmfirth – Meltham and is bounded to the northern edge by LCA F4 Colne [Slaithwaite, Marsden] and is in the National Character Area Profile No. 37 - Yorkshire Southern Pennine Fringe.

The area has been divided into 2 separate landscape types

- 1- Traditional farming [grazing, silage and hay making]
- 2- Industrial [fireworks factory]

# Local Character Profile plan

6



Local Character Profile areas LCA E1: Holmfirth – Meltham, rural fringe land, the site is marked by a blue star.

National Character Area Profile No. 37 - Yorkshire Southern Pennine Fringe.

# Landscape Character area Summary

7

## • Physical influences

### • Topography

- Higher ground of this northern extent of LCA E1 forms this gently undulating plateau ranging from approximately 200m the east to 252m in the west of the site.

### • Geology

- As stated in the LCA E1: Geology is typical of the wider area with the 'landscape underlain by Carboniferous Millstone Grit and sandstone'.

### • Ecological influences

- The area is made up of small to medium-scale regular pattern fields of grassland pastures enclosed by gritstone walls.
- The majority of the fields are improved pastures or managed for silage production with in-bye fields close to the farm buildings to the east of the site. LCA: E1 identifies isolated remnants of species-rich grasslands (hay meadow and wet pastures) exist within the farmed landscape. Flushed meadows are of special nature conservation interest.

## • Human influences

- The area has been both farmed and historically quarried for sandstone since before 1854. The 1854 maps show Waterhouse Quarry and Crosland Hill Quarry were already evident within the site.

- A strong historic sense of place with stone wall field boundaries creates a unified local vernacular in the fields lying in the outer area of the site but this contrasts significantly with the industrial internal compound area.

- Some Listed Buildings are located to the east of the site, just outside the site boundary. Internally in the central area of the site, the built environment creates an almost secure compound style with relatively unkempt landscaped areas in-between sheds.

### • Past settlement

- Standard Fireworks moved to this Crosland Hill site in Huddersfield in 1910. In 1998, Standard was bought by the Chinese company Black Cat Fireworks and eventually, all production was transferred to China. The site at Crosland Hill was kept on as the UK headquarters of Black Cat Fireworks UK, and remains as the sales, marketing, warehouse and distribution centre for the company.

### • Industrial patterns

- Disused quarries provide evidence of industrial heritage and Standard Fireworks bought the disused quarry in 1910 initially occupying the central area, then further extending over the years to cover over 100 acres.

### • Visual Character

- The visual character is mixed across the site. The outer area is one of gently undulating fields with distinct field boundaries up to the security fence which bounds the firework factory site. The internal occupied site has scattered low buildings of steel, block and brick with scrub and access roads dissecting the compound area. There are restricted views from within the site but the outer lying fields afford extensive almost panoramic views down towards the Colne Valley to the north and across the golf course to the west. The residential urban fringe areas to the east and upland plateau of fields towards the quarry in the south are clearly visible from the fields on the site. Intermittent trees and hedgerows screen the secure compound area and restrict views into and out of the central area of the site.

# Landscape Character area 1.

## Traditional Farming

8

- **Key Characteristics**

- Pastoral plateau farmland - mixed agricultural fields, hay and grazing land.

- **Landform**

- Gently undulating plateau area

- **Vegetation**

- Occasional groups of broadleaf trees with isolated small trees occasionally on field boundaries

- **Tree cover**

- Tree preservation orders on individual trees, primarily sycamore, within the site, located close to the south and south western boundaries.

- **Land Use**

- Allocated as Provisional Open Land, the land use is traditional farming primarily hay making, improved pastures for silage and grazing.

- **Enclosure and views**

- The elevated nature of the landscape affords long views across the valley to the north, settlements to the east and beyond, including to the south towards Holmfirth and beyond.

- **Settlement and buildings**

- Traditional farm buildings and associated barns.

- **Transport and Access**

- The area is accessed for farming, along access tracks and through field gates. There are 2 Public Rights of Way footpaths [numbers HUD/234/40 and HUD/234/50] which abut the site along the northern boundary [outside the site].

- **Landscape condition**

- The area is managed grassland, some in-bye fields used for grazing and others for hay or silage mainly. The condition is good with field boundaries defined by well maintained drystone walls.



# Landscape Character area 1.

## Traditional farming

9

- **Recreational**

- Crosland Heath Golf Course lies to the west of the site over Felks Stile Road. There is no public access within the site boundary although PROW footpaths about the site to the northern boundary.

- **Noise**

- In the area virtually no traffic noise could be heard, apart from the occasional vehicle on Felks Stile Road, Crosland Hill Road and Blackmoorfoot Road. Some intermittent noise generated from the settled Colne Valley to the north but primarily only the wind in the trees could be heard.

- **Historical cultural**

- The fields retain a feel of traditional local farming. Grade II listed cottages just beyond the eastern boundary are constructed of traditional hammer-dressed stone, pitched stone slate roof and stone mullioned windows.

- **Subjective description.**

- A tranquil farmed landscape with extensive far reaching views.



Typical images of character area 1



# Landscape Character area 1.

## Traditional farming

10

### Main strategies

**Conserve** where landscape character is strong, in good condition and has features, which distinguish the area from other areas.

**Restore** where the underlying character is still reasonable strong but the overall structure and individual elements and features are in decline.

**Enhance** where the underlying character is weak with no clear defining structure, and where positive action is needed to create an improved landscape structure.

**Create** where there is opportunity for a radical change to the existing landscape.

### Condition /character matrix



### Conclusion:

This local landscape character area is of moderate landscape character and in good condition. There is a case for conserving and strengthening the character of the area and any development should be sympathetic and improve permeability across the site.

Condition	Good	Strengthen	Strengthen And Conserve	Conserve
	Declining	Strengthen And Enhance	Conserve And Enhance	Conserve And Restore
	Poor	Creation	Restore And Enhance	Restore
		Weak	Moderate	Strong
		Character		

# Landscape Character area 2.

## Industrial

11

- **Key Characteristics**

- Industrial firework factory compound, access roads grass and scrub.

- **Landform**

- Flat upland.

- **Vegetation**

- Occasional groups of trees and scrub between shed with areas of rough grassland with areas of naturalised vegetation and rose bay willow herb. There appears to be little landscape maintenance to the storage area and outer lying sheds.

- **Tree cover**

- Very mixed tree and scrub cover across the site with shelterbelts, field boundary trees and extensive belts of native planting to screen the fireworks compound area.

- **Land Use**

- Industrial for fireworks factory, now head office with remnants of buildings for firework manufacturing.

- **Enclosure and views**

- The elevated nature of the landscape affords long views across the valley to the north, settlements to the east, including to the south towards Holmfirth and beyond however these are intermittent glimpses due to the nature of the screening vegetation bounding the compound.

- **Settlement and buildings**

- A mixture of different coloured brick buildings, garages, pre-fabricated and steel buildings form the head office with a range of steel and concrete storage sheds and metal containers across the compound area.

- **Transport and Access**

- The area is inaccessible to the public and is restricted to authorised access only to the firework factory from the main entrance off Blackmoorfoot Road.

- **Landscape condition**

- The area is low quality grass and scrub with an eclectic mixture of office buildings, sheds and storage containers linked by numerous access roads and parking/storage bays.

# Landscape Character area 2.

## Industrial

12

- **Recreational**

- There is no public access within the site boundary.

- **Noise**

- In the entrance areas general vehicle movement noise could be heard together with some vehicular traffic from Blackmoorfoot Road.

- **Historical cultural**

- The area is an industrial business/head office with outer lying compound areas being a mixture of sheds, access roads and parking areas.

- **Subjective description.**

- The main entrance road has mown verges up to the main office and car park which is more occupied with activity, vehicles and staff, whereas the outer lying compound areas are quieter with areas of unkempt naturalised vegetation between the sheds and containers. The area feels separated from the surrounding landscape due to the screening trees and vegetation which surrounds the boundary security fence.



Typical images of character area 2



# Landscape Character area 2. Industrial

13

## Main strategies

**Conserve** where landscape character is strong, in good condition and has features, which distinguish the area from other areas.

**Restore** where the underlying character is still reasonable strong but the overall structure and individual elements and features are in decline.

**Enhance** where the underlying character is weak with no clear defining structure, and where positive action is needed to create an improved landscape structure.

**Create** where there is opportunity for a radical change to the existing landscape.

## Condition /character matrix

### Conclusion:

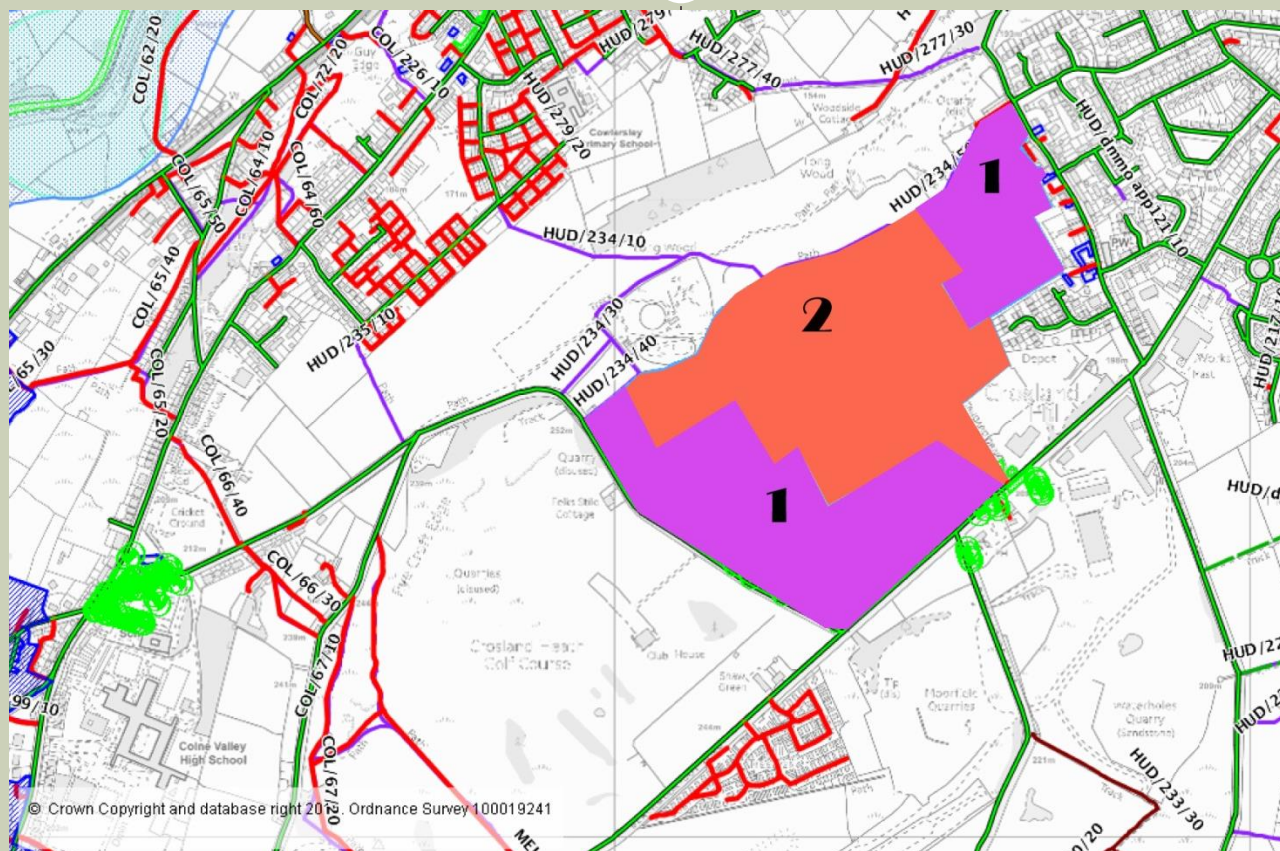
This local landscape character area is of weak landscape character and in poor condition, mainly due to the unkempt appearance. There is a case for development which could link more closely with the surrounding character of the area, drawing on the quality of the landscape and any such development should be sympathetic to this.

Condition	Good	Strengthen	Strengthen And Conserve	Conserve
	Declining	Strengthen And Enhance	Conserve And Enhance	Conserve And Restore
	Poor	Creation	Restore And Enhance	Restore
		Weak	Moderate	Strong
		Character		



# Landscape Character Assessment Conclusions

14



## Type 1 Conclusion:

**Condition; Good  
Character ; Moderate  
STRENGTHEN & CONSERVE**

This local landscape character area is of moderate landscape character and in good condition. There is a case for increasing permeability of the site and conserving and strengthening the character of the area and any development should be sympathetic.

## Type 2 Conclusion:

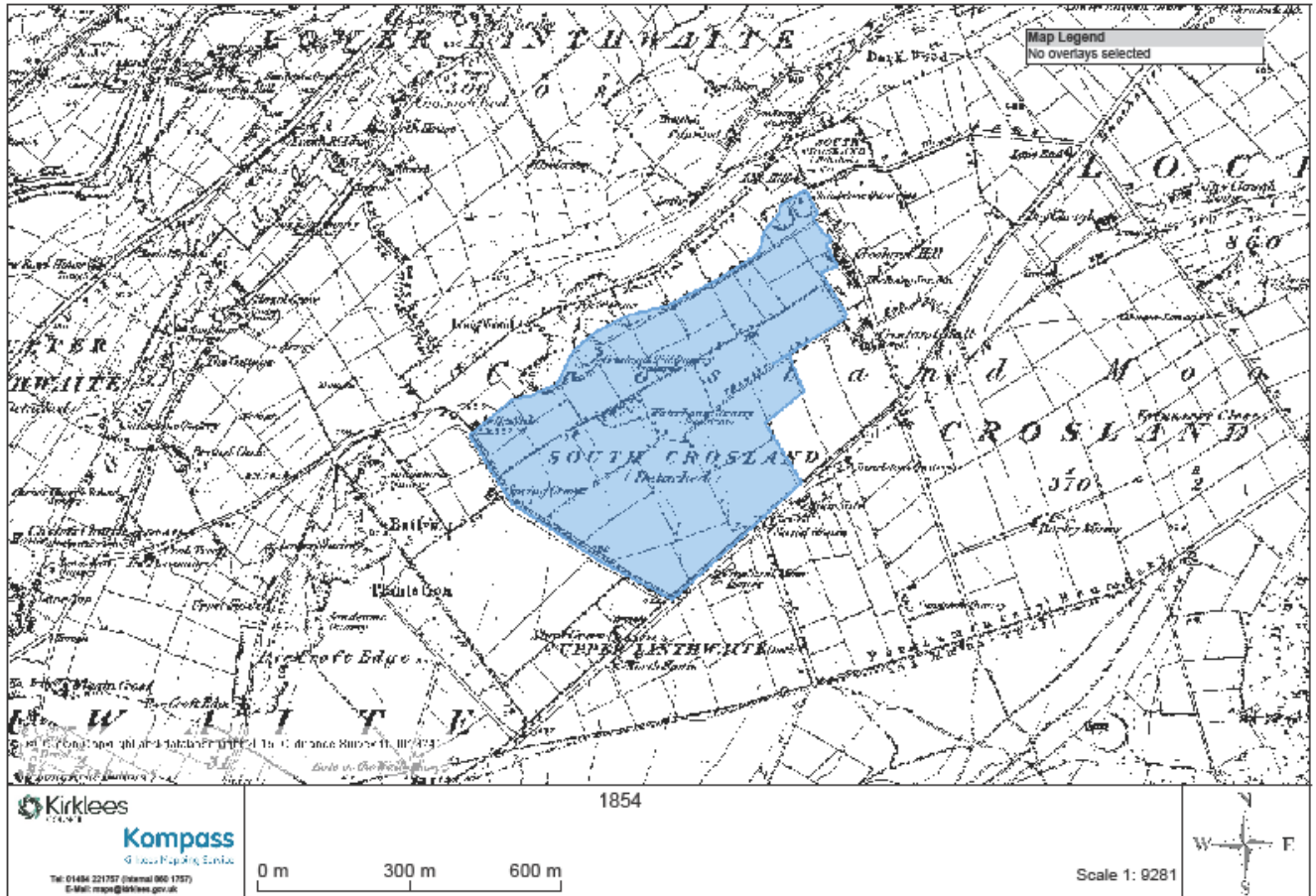
**Condition; Poor  
Character ; Weak  
CREATION**

This local landscape character area is of weak landscape character and in poor condition. Permeability could be increased and there is a case for development which could link more closely with the surrounding character of the area, drawing on the quality of the landscape setting and any such development should be sympathetic to this.

# Historical Plan

## Land north of Blackmoorfoot Road, Crosland Moor, Huddersfield

15



**Kirklees**  
Council  
**Kompass**  
Local Planning Service  
Tel: 01484 221757 (external 0800 1757)  
E-Mail: [map@kirklees.gov.uk](mailto:map@kirklees.gov.uk)

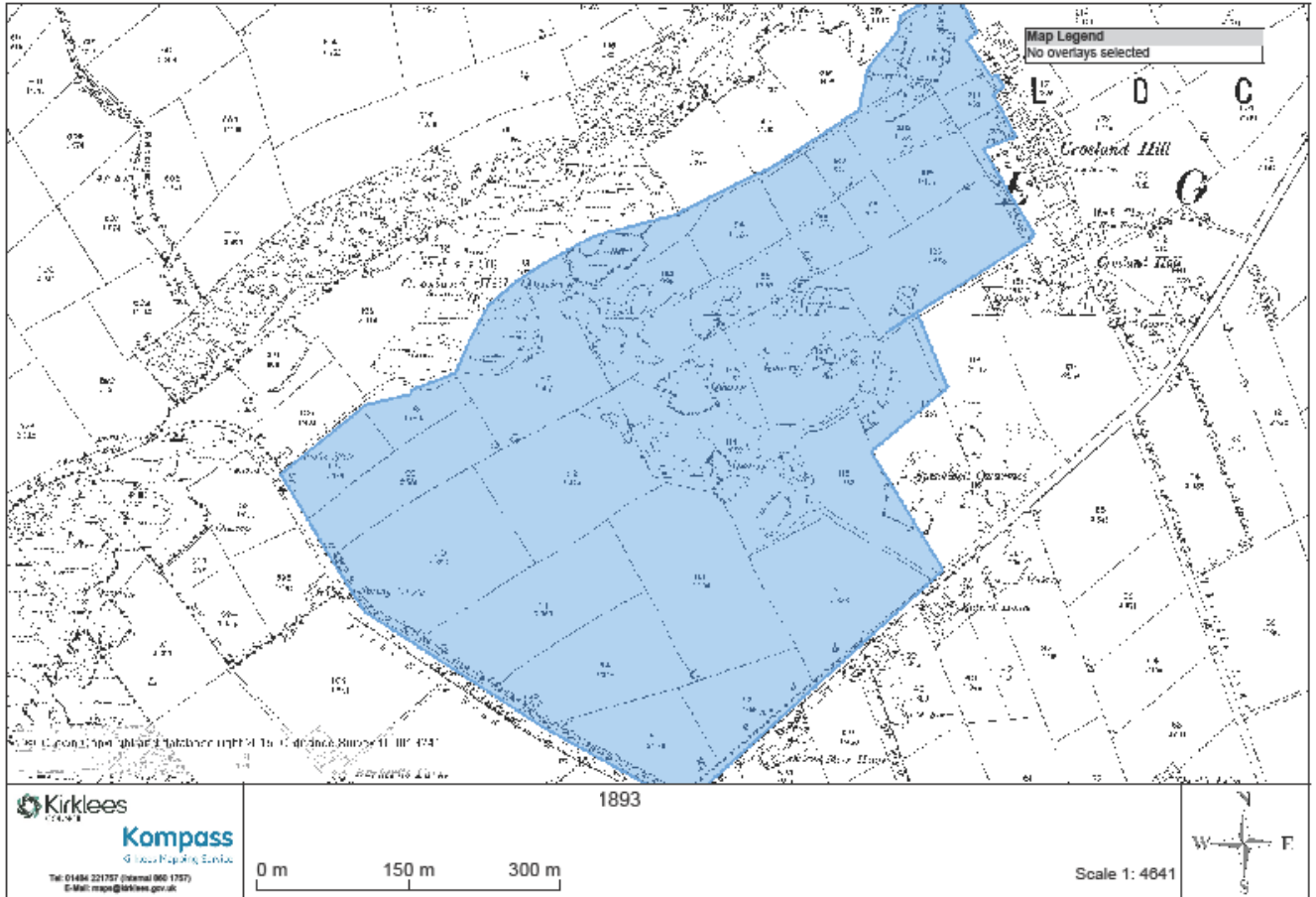
1854

Scale 1: 9281

# Historical Plan

## Land north of Blackmoorfoot Road, Crosland Moor, Huddersfield

16

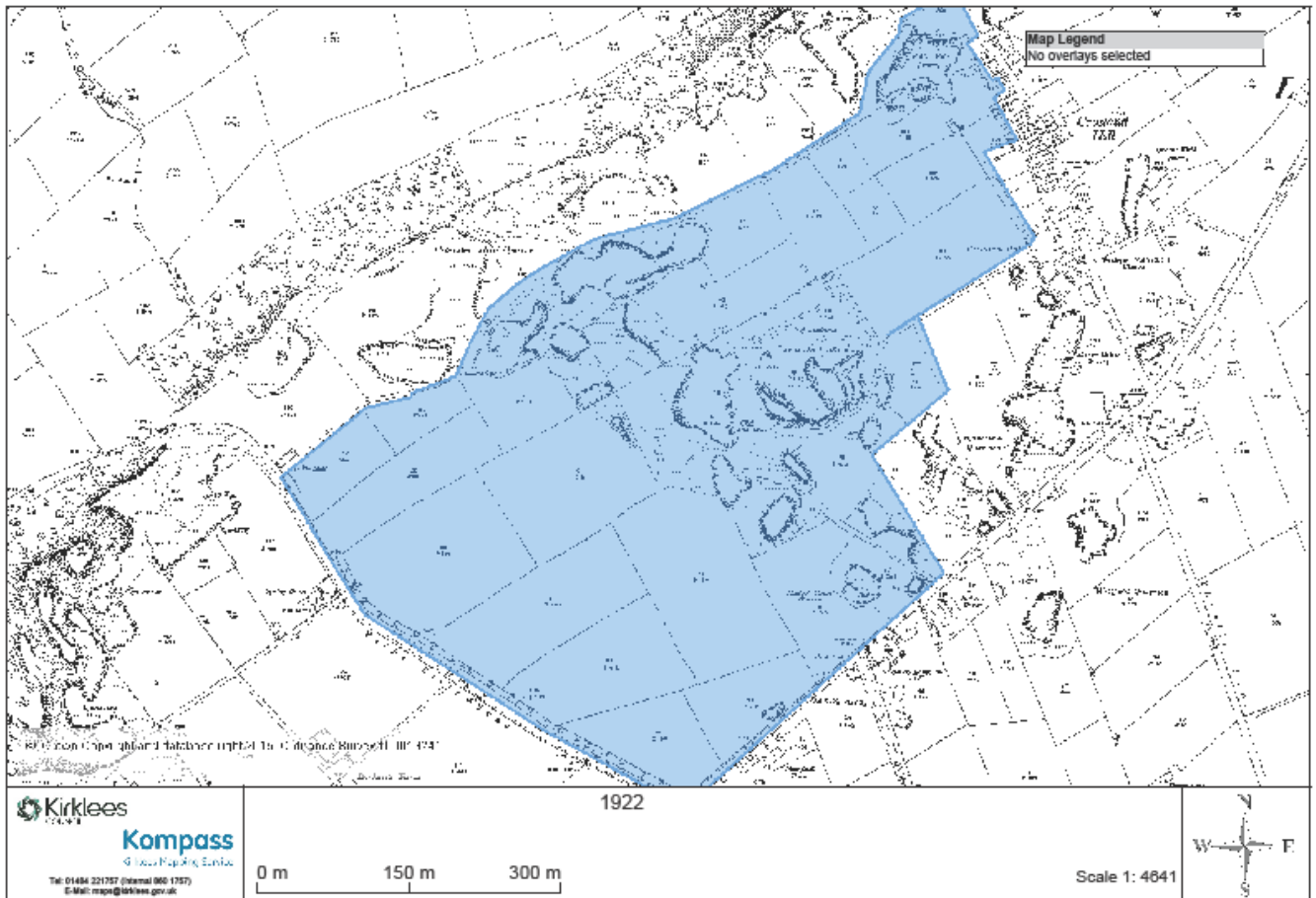




# Historical Plan

## Land north of Blackmoorfoot Road, Crosland Moor, Huddersfield

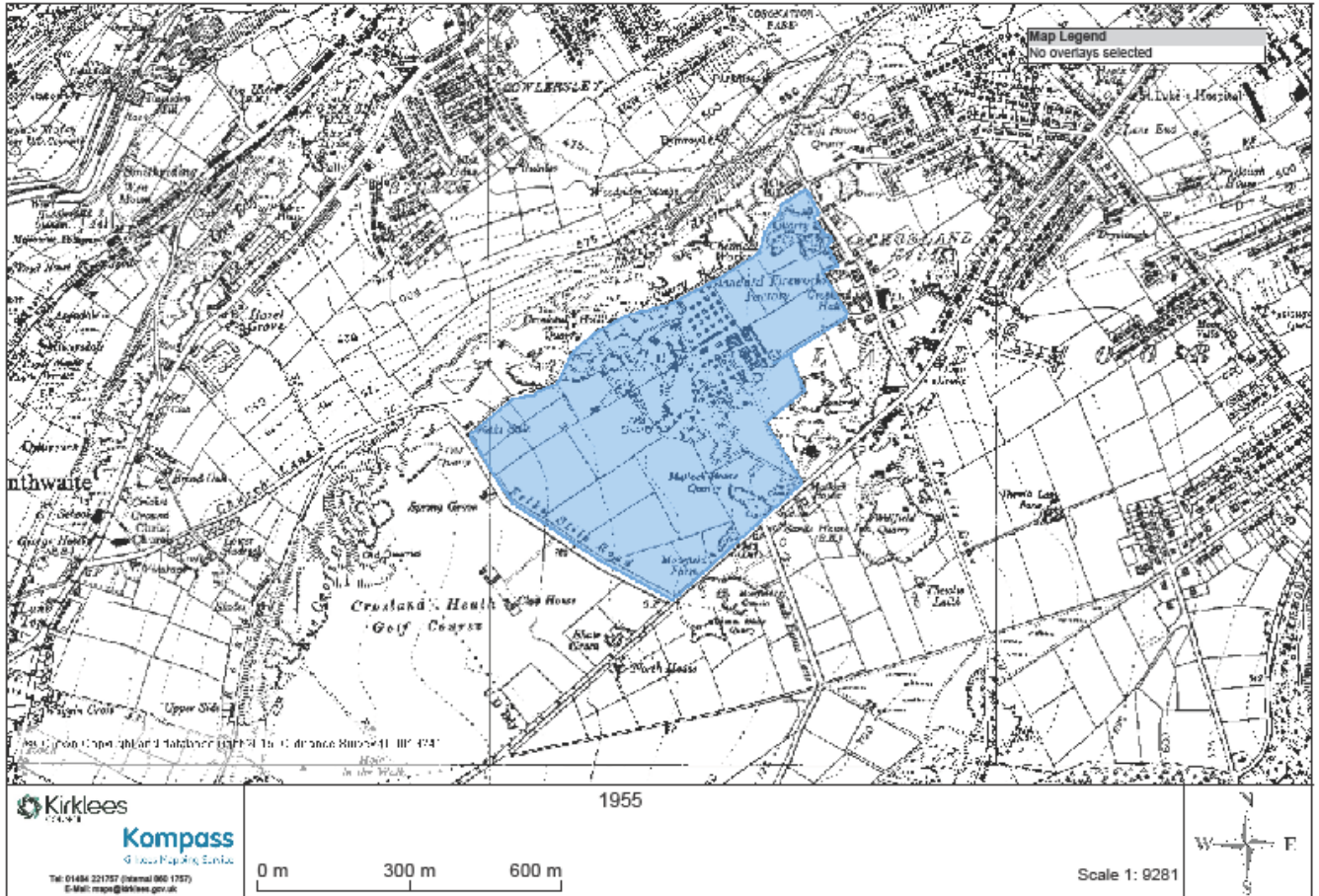
17



# Historical Plan

## Land north of Blackmoorfoot Road, Crosland Moor, Huddersfield

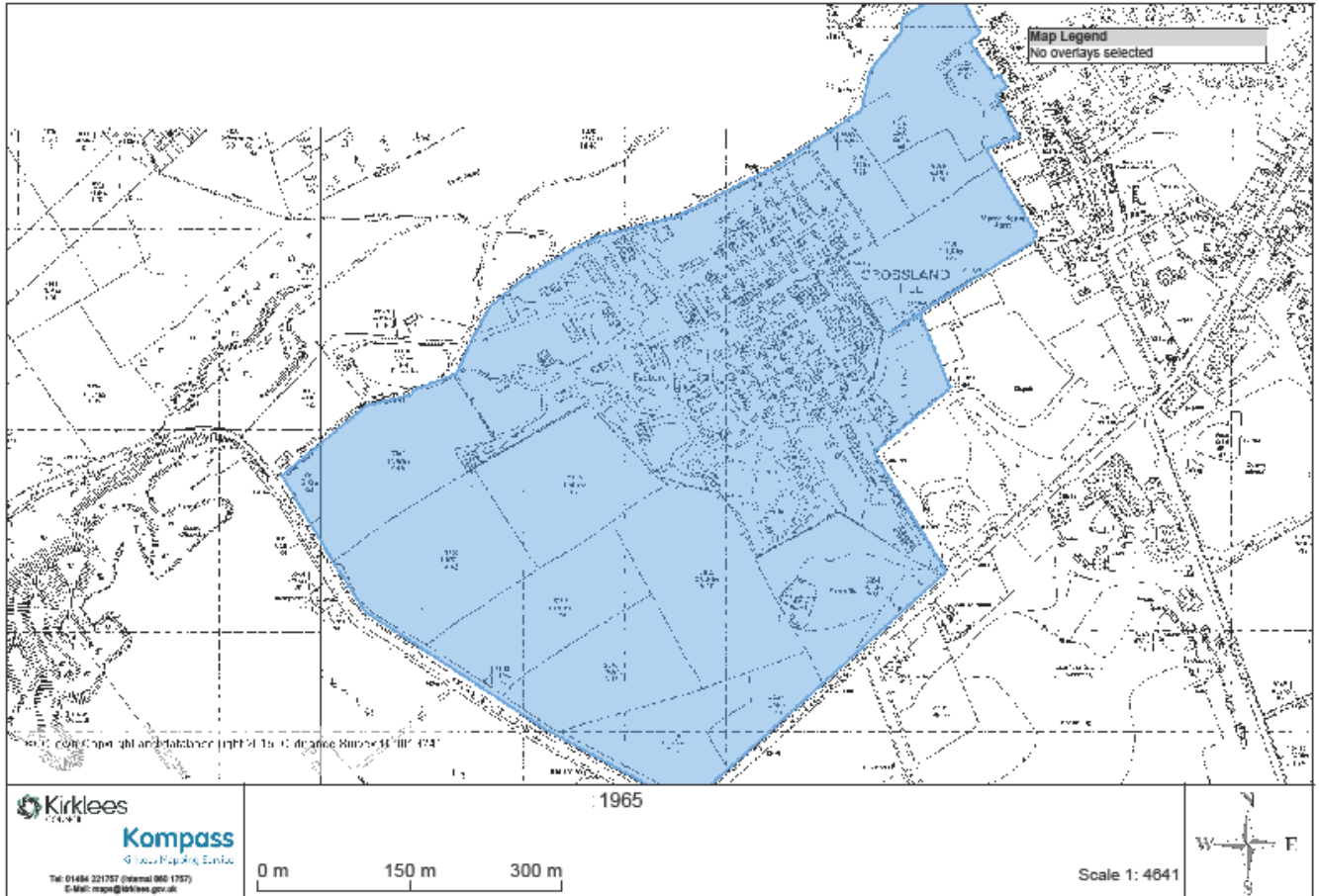
18



# Historical Plan

## Land north of Blackmoorfoot Road, Crosland Moor, Huddersfield

19



# Information Plan

## Land north of Blackmoorfoot Road, Crosland Moor, Huddersfield

20

