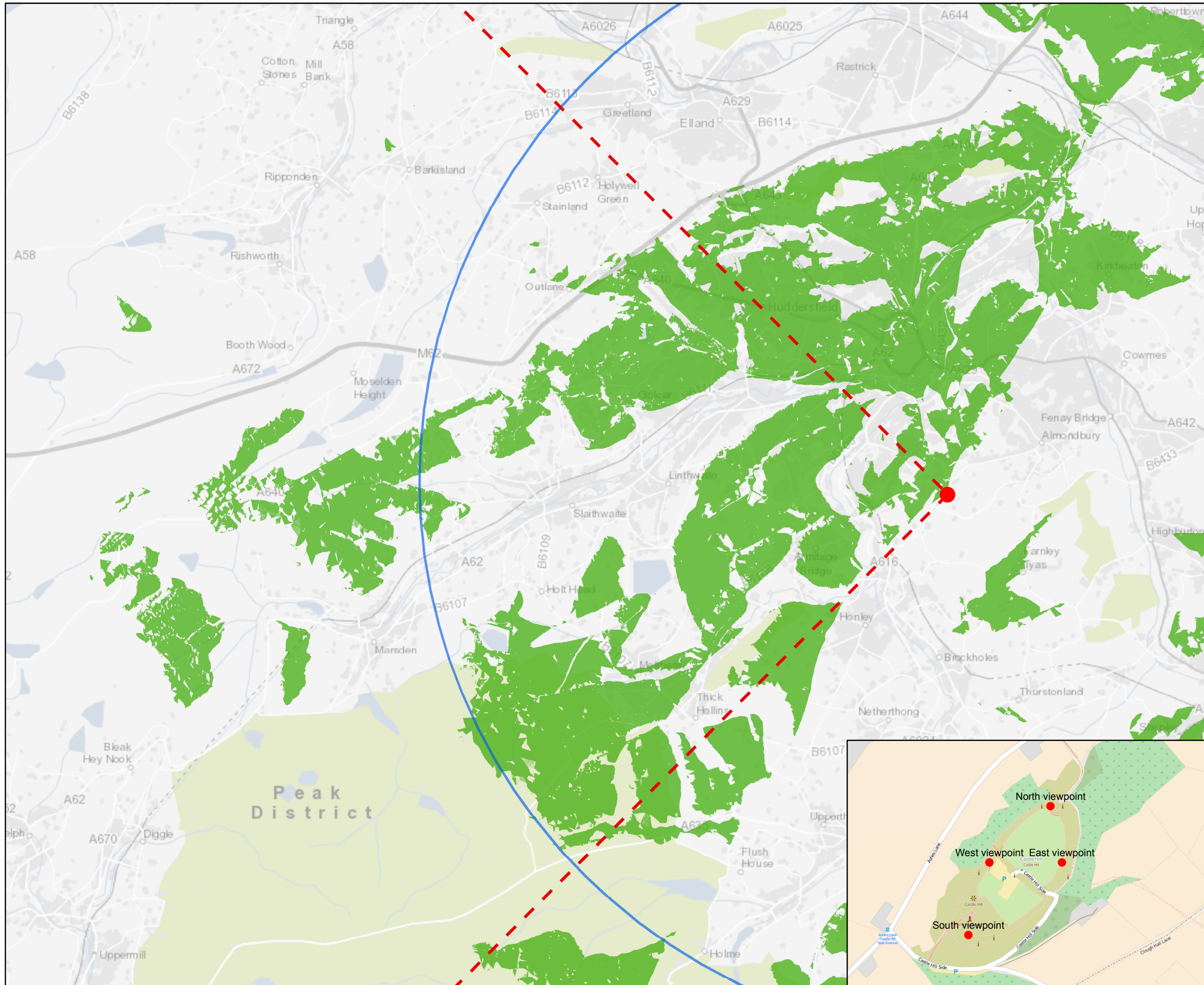


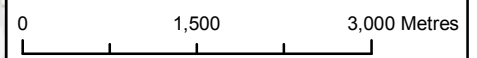
8. Figures

Figure 1.	Location Plan
Figure 2.	Topographic Map
Figure 3.	Significant Ridgelines around Castle Hill
Figure 4.	ZTV from Castle Hill (to the north)
Figure 5.	ZTV from Castle Hill (to the east)
Figure 6.	ZTV from Castle Hill (to the south)
Figure 7.	ZTV from Castle Hill (to the west)
Figure 8.	Dominance of Castle Hill
Figure 9.	Viewpoints
Figure 10.	ZTV to Castle Hill
Figure 11.	ZTV to upper part of Victoria Tower
Figure 12.	Designated Heritage Assets
Figure 13.	Importance of Historic Relationships
Figure 14.	Major Approaches to Huddersfield and Kirklees
Figure 15.	Key Features of Castle Hill's Setting
Figure 16.	Importance of Undeveloped Areas around Castle Hill
Figure 17.	Height of Development



- Castle Hill (West)
- 10 km Buffer around Castle Hill
- - - Viewing Angle to West
- Area Visible from Castle Hill*

* NB: Visibility was calculated using an observer offset (OFFSETA) of 1.6m which represents the average person eye height, and a surface offset (OFFSETB) of 0m.



This map is reproduced from Ordnance Survey material with the permission of Ordnance Survey on behalf of the controller of Her Majesty's Stationery Office. © Crown Copyright. Unauthorised reproduction infringes Crown copyright and may lead to prosecution or civil proceedings.

CLIENT NAME: Kirklees Council
 LICENCE NUMBER: 100019241

Atkins Limited ©
 Consulting Engineers
 The Hub
 500 Park Ave,
 Bristol, South Glos.,
 England, BS32 4RZ
 Tel: +44(0)1454 662000
 Fax: +44(0)1454 663333
 www.atkinsglobal.com

Client
Kirklees Council

Project
Castle Hill Setting Study

Title
**Figure 7.
 Zone of Theoretical Visibility
 from Castle Hill (to the west)**

Sheet Size	Original Scale	Designed / Drawn	Checked	Authorised
A3	1:65,000	ZK	HM	MJ
		Date	Date	Date
		19/05/16	19/05/16	19/05/16

Drawing Number	Rev
5142402_CAS_LV_ZTVWest	02

