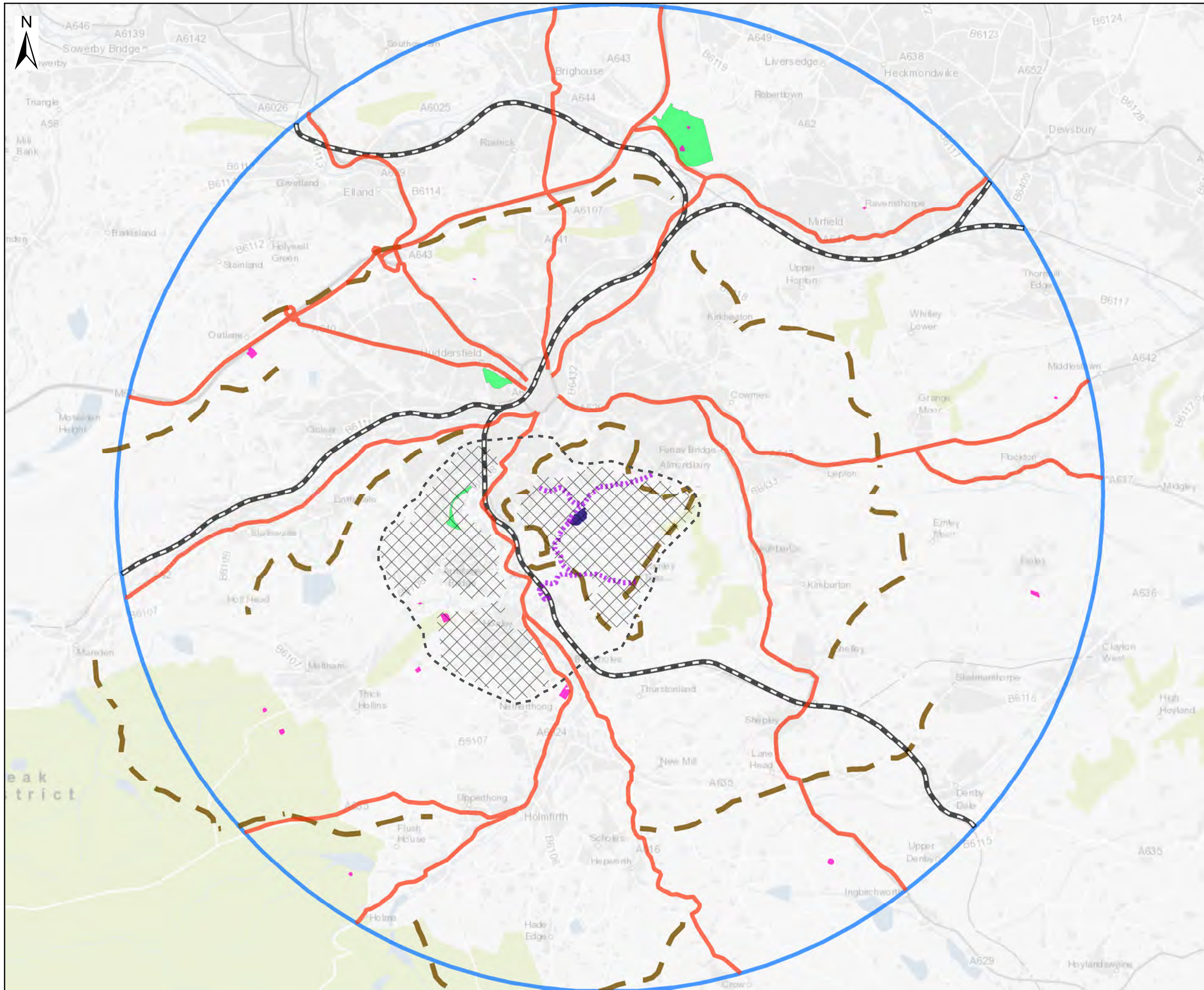
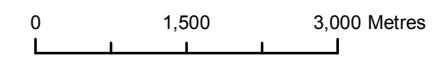


8. Figures

Figure 1.	Location Plan
Figure 2.	Topographic Map
Figure 3.	Significant Ridgelines around Castle Hill
Figure 4.	ZTV from Castle Hill (to the north)
Figure 5.	ZTV from Castle Hill (to the east)
Figure 6.	ZTV from Castle Hill (to the south)
Figure 7.	ZTV from Castle Hill (to the west)
Figure 8.	Dominance of Castle Hill
Figure 9.	Viewpoints
Figure 10.	ZTV to Castle Hill
Figure 11.	ZTV to upper part of Victoria Tower
Figure 12.	Designated Heritage Assets
Figure 13.	Importance of Historic Relationships
Figure 14.	Major Approaches to Huddersfield and Kirklees
Figure 15.	Key Features of Castle Hill's Setting
Figure 16.	Importance of Undeveloped Areas around Castle Hill
Figure 17.	Height of Development



- ⋯ Approach to Castle Hill
- Rail Line
- Approach to Huddersfield and Kirkstall
- Significant Ridgelines
- Areas From Where Castle Hill Dominates
- Approximate Overall Area of Dominance
- Castle Hill
- Scheduled Monuments
- Registered Parks and Gardens
- 10 km Buffer around Castle Hill



This map is reproduced from Ordnance Survey material with the permission of Ordnance Survey on behalf of the controller of Her Majesty's Stationery Office. © Crown Copyright. Unauthorised reproduction infringes Crown copyright and may lead to prosecution or civil proceedings.

CLIENT NAME: Kirkstall Council
 LICENCE NUMBER: 100019241

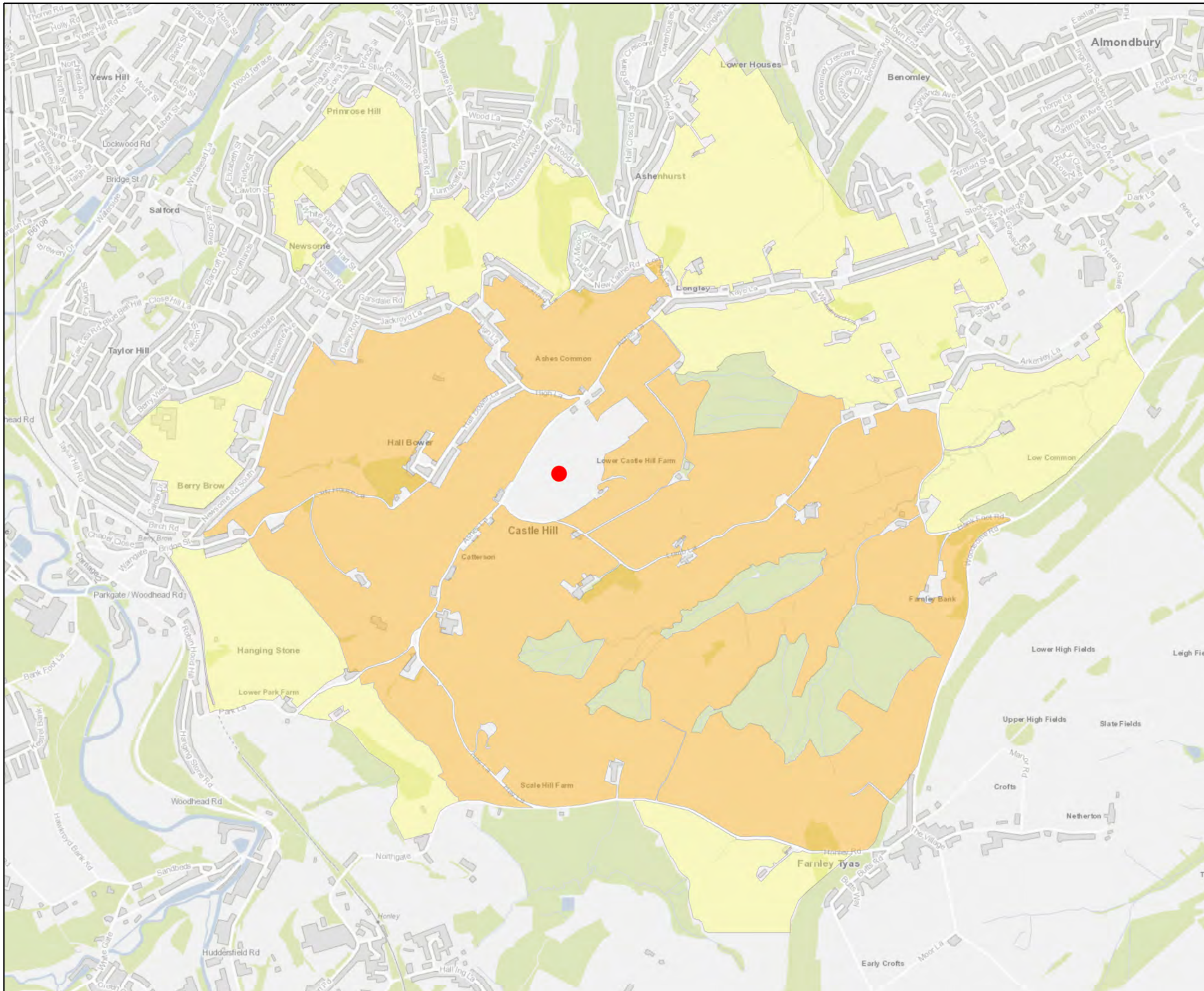
Atkins Limited ©
 Consulting Engineers
 The Hub
 500 Park Ave,
 Bristol, South Glos.,
 England, BS32 4RZ
 Tel: +44(0)1454 662000
 Fax: +44(0)1454 663333
 www.atkinsglobal.com

Client
Kirkstall Council

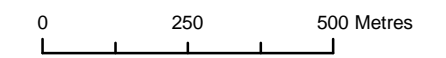
Project
Castle Hill Setting Study

Title
**Figure 15.
 Key Features of Castle Hill's Setting**

Sheet Size	Original Scale	Designed / Drawn	Checked	Authorised
A3	1:75,000	ZK	RS	MJ
Drawing Number	Date	Date	Date	Rev
5142402_CAS_GEN_COMPOSITE	19/05/16	19/05/16	19/05/16	02



- Castle Hill
- Importance of Undeveloped Land around Castle Hill
- Critical
- Important



This map is reproduced from Ordnance Survey material with the permission of Ordnance Survey on behalf of the controller of Her Majesty's Stationery Office. © Crown Copyright. Unauthorised reproduction infringes Crown copyright and may lead to prosecution or civil proceedings.

CLIENT NAME: Kirklees Council
 LICENCE NUMBER: 100019241

Atkins Limited ©
 Consulting Engineers
 The Hub
 500 Park Ave,
 Bristol, South Glos.,
 England, BS32 4RZ
 Tel: +44(0)1454 662000
 Fax: +44(0)1454 663333
 www.atkinsglobal.com

Client
Kirklees Council

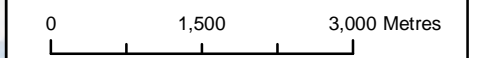
Project
Castle Hill Setting Study

Title
**Figure 16.
 Importance of Undeveloped Areas
 around Castle Hill**

Sheet Size	Original Scale	Designed / Drawn	Checked	Authorised
A3	1:13,000	ZK	HM	MJ
Drawing Number	Date	Date	Date	Rev
5142402_CAS_GEN_UndeAreas	19/05/16	19/05/16	19/05/16	01

- Victoria Tower
- 10 km Buffer around Castle Hill
- Height necessary for new development to be visible from Victoria Tower*
- ≤ 0m
- 0m to 10m
- 10m to 20m
- 20m to 30m
- 30m to 40m
- 40m to 50m
- 50m to 70m
- 70m to 90m
- ≥ 90m

* NB: Visibility was calculated using an observer offset (OFFSETA) of 10 m for Victoria Tower, and the dedicated building heights for surface offsets (OFFSETB).



This map is reproduced from Ordnance Survey material with the permission of Ordnance Survey on behalf of the controller of Her Majesty's Stationery Office. © Crown Copyright. Unauthorised reproduction infringes Crown copyright and may lead to prosecution or civil proceedings.

CLIENT NAME: Kirklees Council
LICENCE NUMBER: 100019241

Atkins Limited ©
Consulting Engineers
The Hub
500 Park Ave,
Bristol, South Glos.,
England, BS32 4RZ
Tel: +44(0)1454 662000
Fax: +44(0)1454 663333
www.atkinsglobal.com

Client
Kirklees Council

Project
Castle Hill Setting Study

Title
**Figure 17.
Height of Development**

Sheet Size	Original Scale	Designed / Drawn	Checked	Authorised
A3	1:75,000	ZK	HM	MJ
		Date	Date	Date
		19/05/16	19/05/16	19/05/16

Drawing Number	Rev
5142402_CAS_LV_ZTV_HeightDev	03

