

Batley and Spen

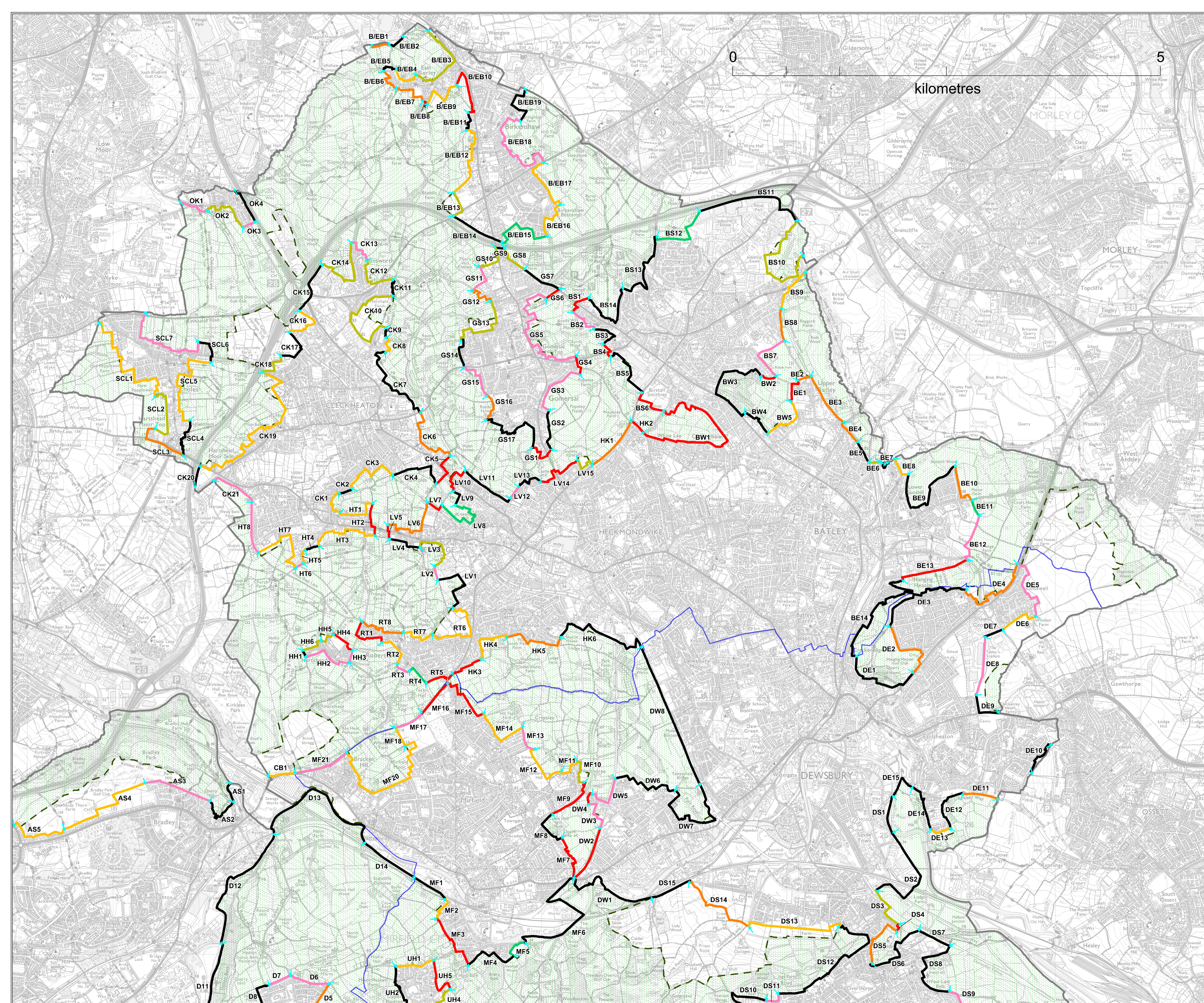
Green Belt Review
Publication Draft Local Plan - November 2016

- 1 Development adjacent to the boundary within the green belt
- 2 would lead to a degree of conflict with green belt purposes,
- 3 ranging from significant (5) to negligible (1)
- 4
- 5

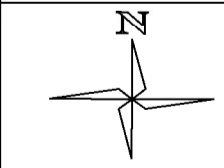
- Development would conflict with purpose of preventing neighbouring towns merging
- Edge contains or is characterised by physical or environmental constraint

- Section Break
Denotes change of reason

- Green Belt
- District Committee Boundary
- Kirklees Boundary
- National Park Boundary



The edge review is based on the extent of the green belt designated in the Kirklees Unitary Development Plan and was used to inform the assessment of site options. The green belt now displayed is that created as part of the Kirklees Local Plan following the acceptance of new allocations and other changes to the green belt as set out in the Kirklees Publication Draft Local Plan document 'Green Belt Boundary Changes' (November 2016).



Map scale: 1:20,000 @ A1
© Crown Copyright and database right 2016. Ordnance Survey 100019241

