

Kirklees (South)

Policies Map (Accepted Options)
Publication Draft Local Plan - November 2016

Green Belt and Green Infrastructure

- Peak District National Park
 - Green Belt
 - Strategic Green Infrastructure (SGI)
 - Urban Green Space (UGS)
 - Local Green Space (LoGS)
 - Add to Green Belt (AGB)
- Housing, Employment & Other Significant Development**
- Employment (E)
 - Priority Employment Areas (B&S, D&M, HUD, KR)
 - Housing (H)
 - Mixed Use (MX)
 - Land at Storthes Hall (MDGB)
 - Gypsies And Travellers & Travelling Showpeople (GTTs)
 - Safeguarded Land (SL)

Heritage Assets

- Archaeological Sites (Class 2) (AS)

Heritage Assets (cont'd)

- Conservation Area
 - Registered Battlefield (RB)
 - Registered Parks and Gardens (RPG)
 - Scheduled Monuments (SM)
- Minerals & Waste**
- Minerals Areas of Search (ME)
 - Minerals Extraction Sites (ME)
 - Minerals Preferred Areas (ME)
 - Minerals Infrastructure (MI)
 - Waste Site (W)
 - Waste Site (Safeguarded) (WS)
- Natural Environment**
- Special Protection Area
 - Special Area of Conservation
 - Site of Special Scientific Interest
 - Local Wildlife Sites (LWS)
 - Local Geological Sites (LGS)
 - Dark Peak Nature Improvement Area

Shopping Centres

- Principal Town Centre
- Town Centre
- District Centre
- Local Centre

Transport

- Highways England Transport Scheme

Core Walking, Cycling and Riding Network

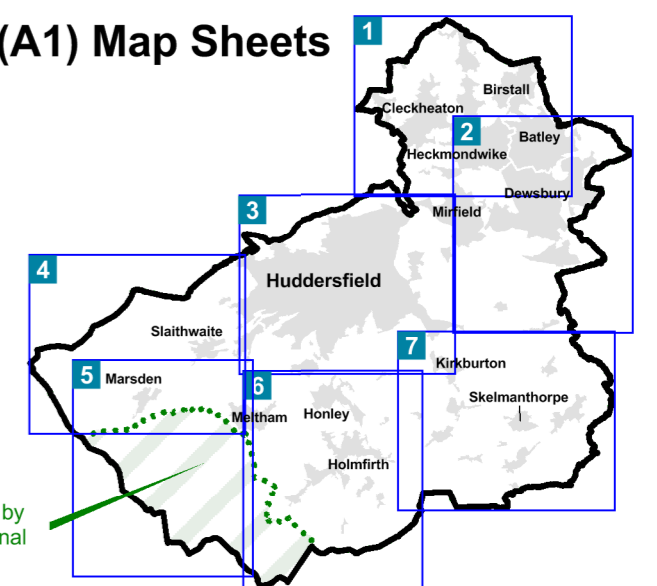
- Existing
- Proposed
- Indicative

Transport Scheme (TS)

- Junction improvement
- Committed transport improvement scheme
- TSS - Mirfield to Dewsbury to Leeds & North Kirklees Growth Zone

Site references relate to allocations and policies in: Publication Draft Local Plan - Allocations & Designations and Strategy & Policies

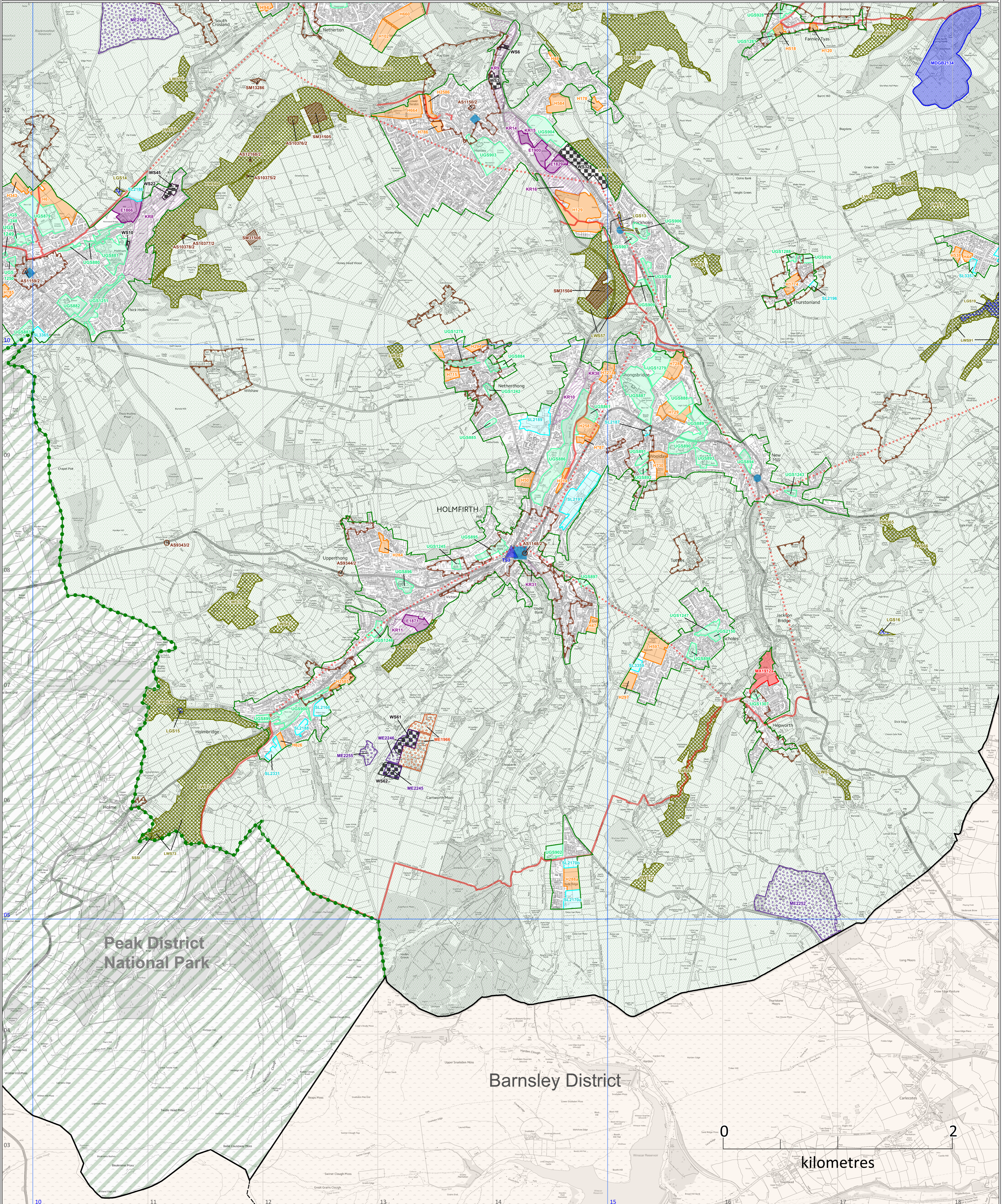
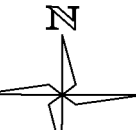
Index to (A1) Map Sheets



Area administered by Peak District National Park Authority

Map scale: 1:15,000 @ A1

© Crown Copyright and database right 2016. Ordnance Survey 100019241



kilometres

0

2