

Huddersfield

Policies Map (Accepted Options)
Publication Draft Local Plan - November 2016

Green Belt and Green Infrastructure

- Peak District National Park
- Green Belt
- Strategic Green Infrastructure (SGI)
- Urban Green Space (UGS)
- Local Green Space (LocGS)
- Add to Green Belt (AGB)

Housing, Employment & Other Significant Development

- Employment (E)
- Priority Employment Areas (B&S, D&M, HUD, KR)
- Housing (H)
- Mixed Use (MX)
- Land at Storthes Hall (MDGB)
- Gypsies And Travellers & Travelling Showpeople (GTTs)
- Safeguarded Land (SL)

Heritage Assets

- Archaeological Sites (Class 2) (AS)
- Conservation Area
- Registered Battlefield (RB)
- Registered Parks and Gardens (RPG)
- Scheduled Monuments (SM)

Minerals & Waste

- Minerals Areas of Search (ME)
- Minerals Extraction Sites (ME)
- Minerals Preferred Areas (ME)
- Minerals Infrastructure (MI)
- Waste Site (W)
- Waste Site (Safeguarded) (WS)

Natural Environment

- Special Protection Area
- Special Area of Conservation
- Site of Special Scientific Interest
- Local Wildlife Sites (LWS)
- Local Geological Sites (LGS)
- Dark Peak Nature Improvement Area

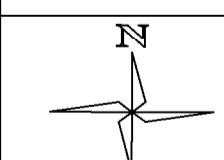
Shopping Centres

- Principal Town Centre
- Town Centre
- District Centre
- Local Centre

Transport

- Highways England Transport Scheme
- Core Walking, Cycling and Riding Network**
- Existing
 - Proposed
 - Indicative
- Transport Scheme (TS)**
- Junction improvement
 - Committed transport improvement scheme
 - TSS - Mirfield to Dewsbury to Leeds & North Kirklees Growth Zone

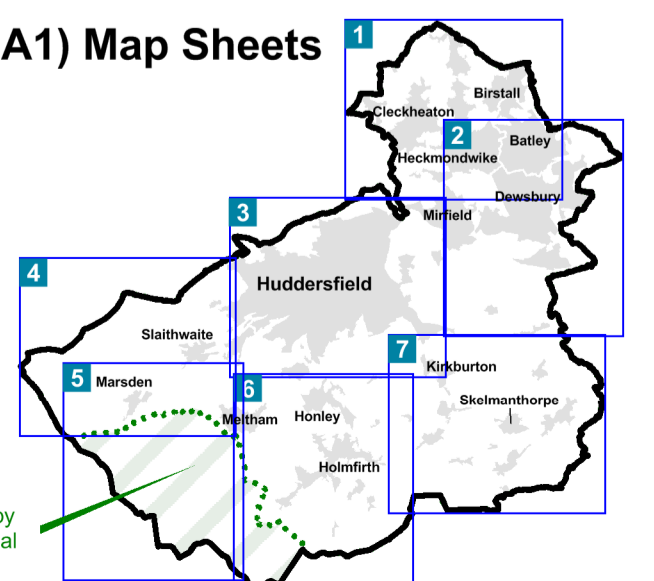
Site references relate to allocations and policies in: Publication Draft Local Plan - Allocations & Designations and Strategy & Policies



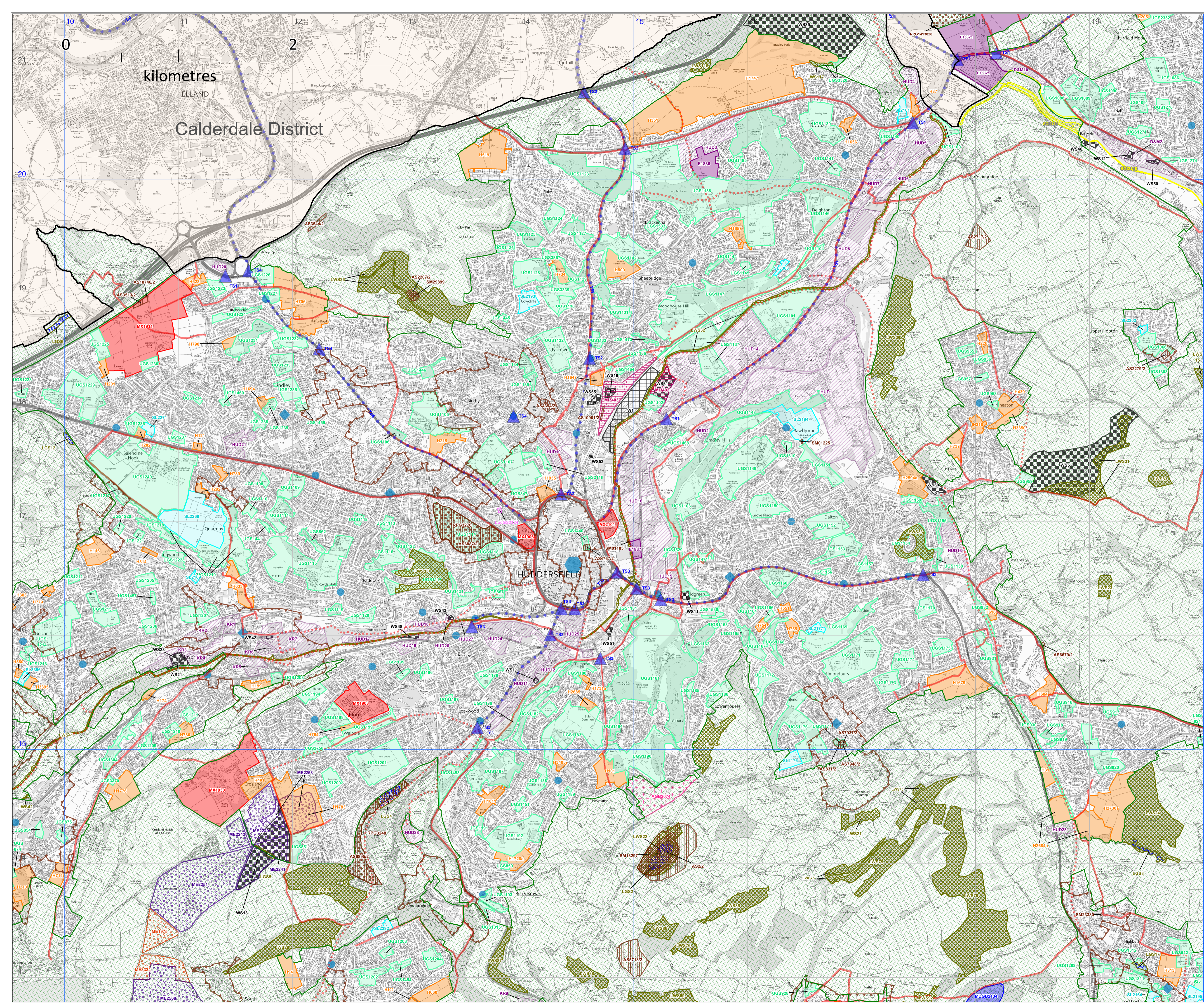
Map scale: 1:15,000 @ A1

© Crown Copyright and database right 2016. Ordnance Survey 100019241

Index to (A1) Map Sheets



Area administered by Peak District National Park Authority



kilometres

ELLAND
Calderdale District

HUDDERSFIELD