

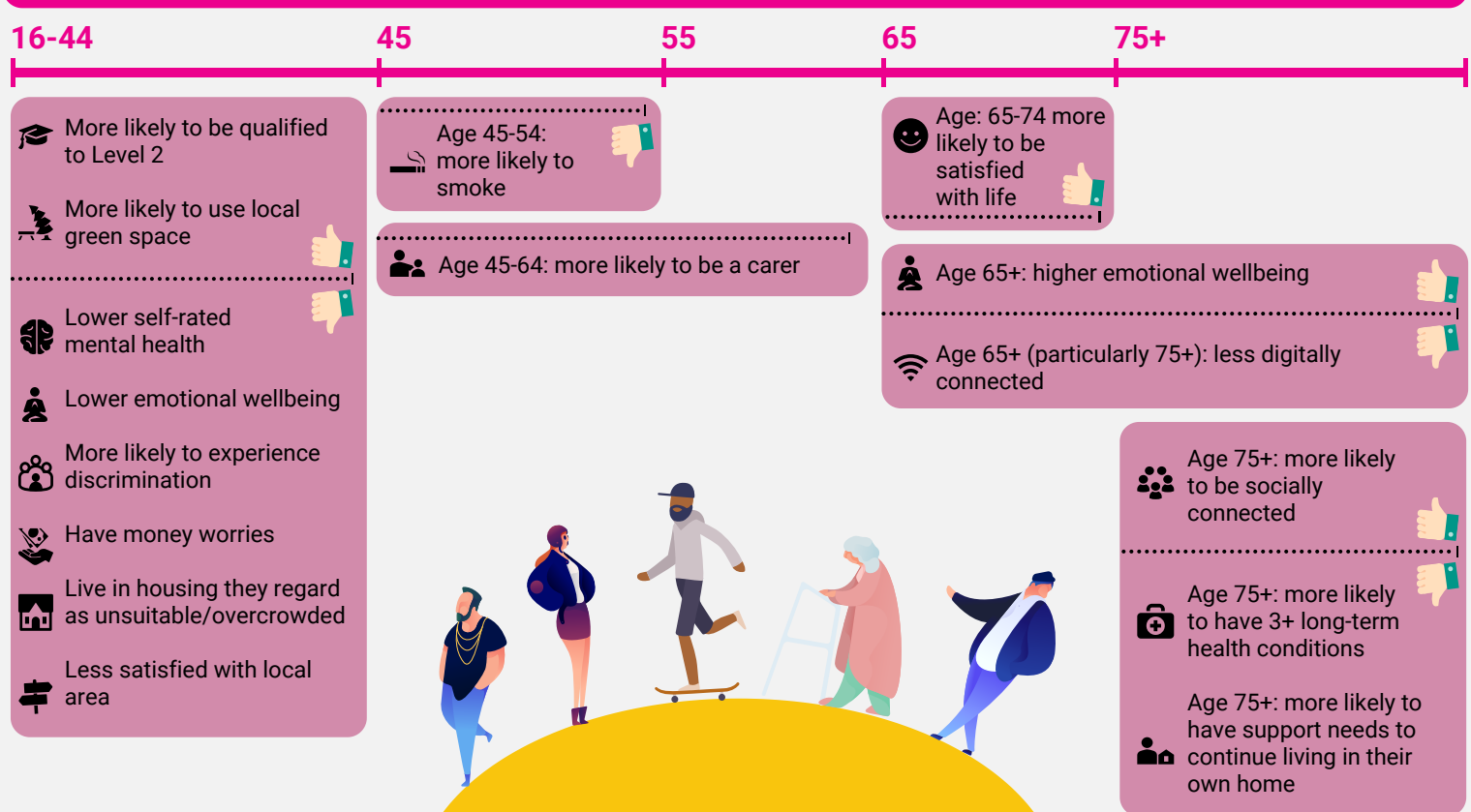
## LOCAL INEQUALITIES

The Kirklees CLiK (Current Living in Kirklees) Survey 2021 follows on from five previous CLiK surveys, conducted in 2001, 2005, 2008, 2012 and 2016.

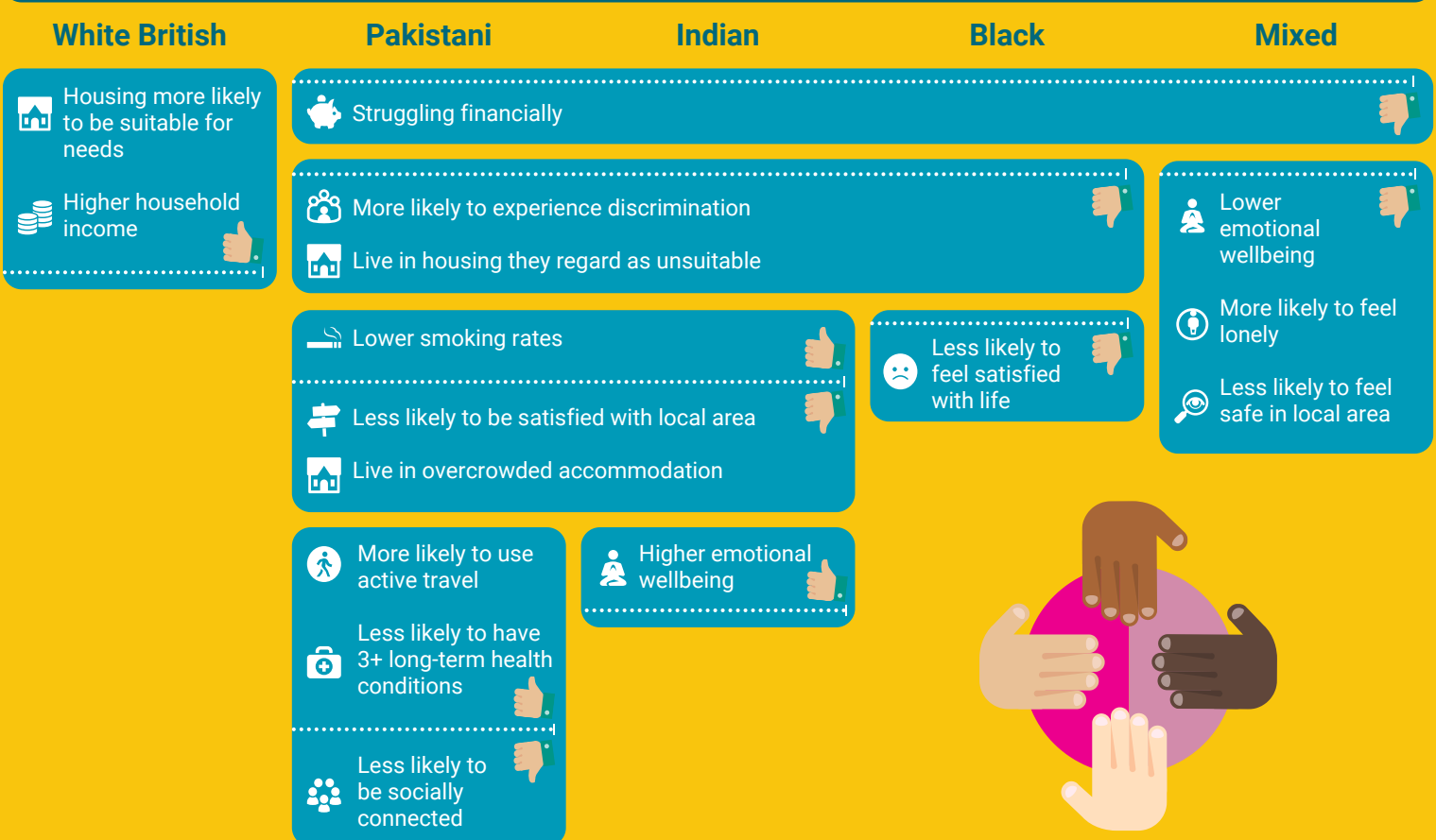
The CLiK survey aims to gather comprehensive data on the health and wellbeing of Kirklees residents aged 16+ across a range of measures, including lifestyle factors, quality of life and quality of place.

Below are some of the key findings from the 2021 survey, which highlight some of the inequalities observed across Kirklees. More detailed findings from the CLiK survey are available at: [www.kirklees.gov.uk/CLiK2021](http://www.kirklees.gov.uk/CLiK2021)

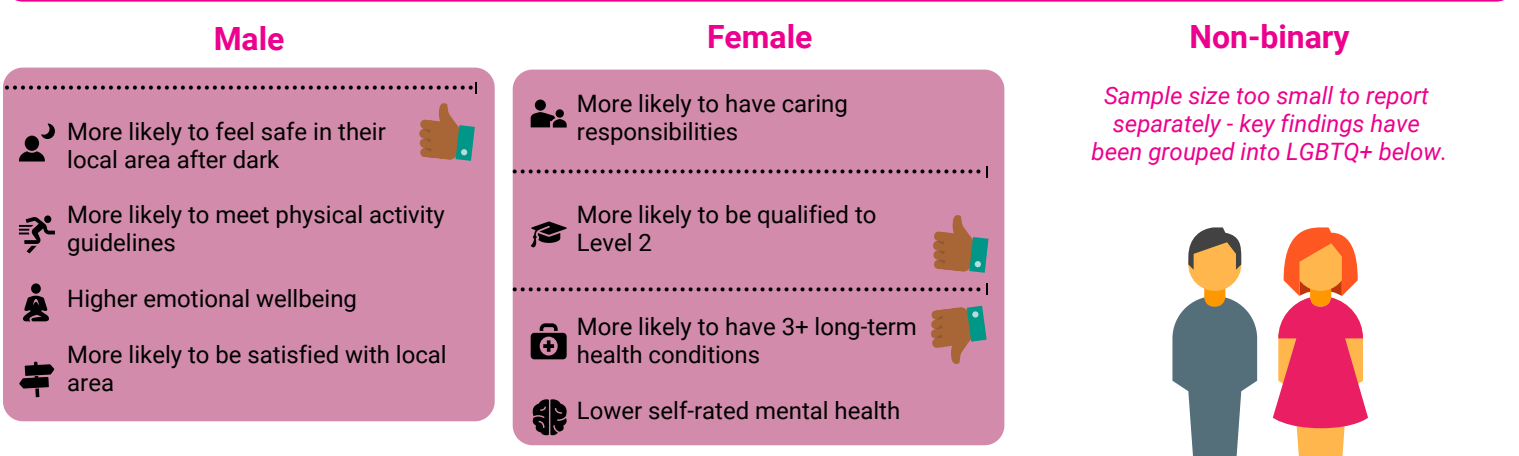
## Age



## Ethnicity



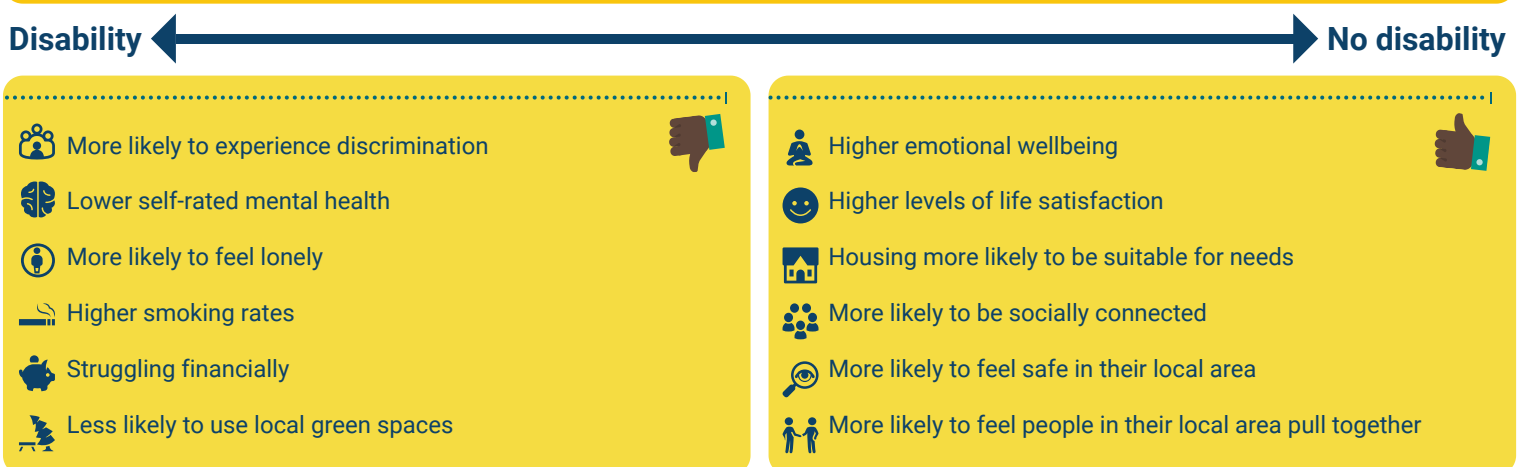
## Gender



## Sexual orientation and gender



## Disability



## Socioeconomic status

