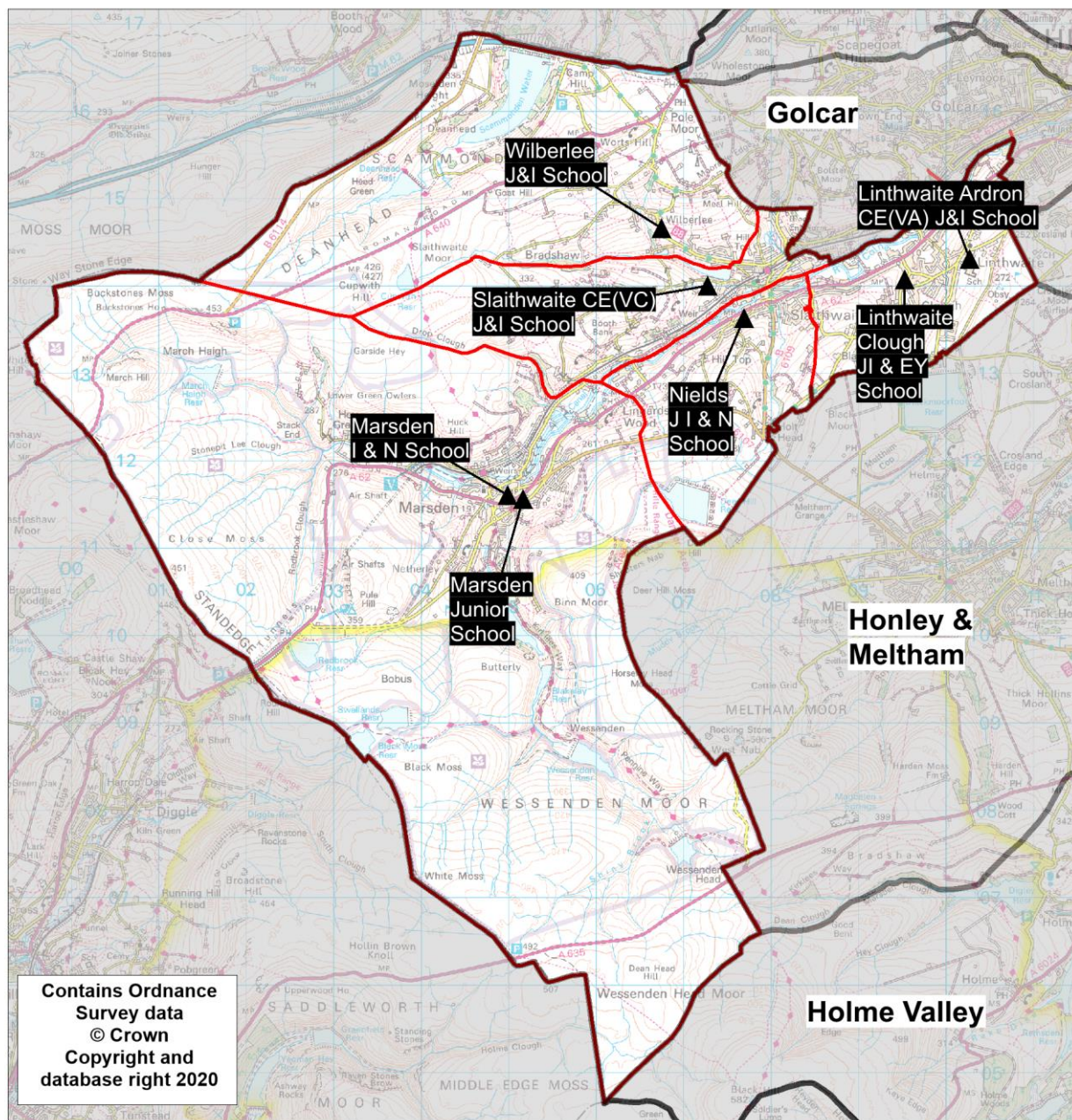


Planning Area 6: Colne Valley



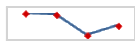
- ❖ Linthwaite Ardron CE(VA) J & I School
- ❖ Linthwaite Clough J I & EY Unit
- ❖ Marsden I & N School
- ❖ Marsden Junior School
- ❖ Nields J I & N School
- ❖ Slaithwaite CE(VC) J & I School
- ❖ Wilberlee J & I School

Overview: The chart on page 83 (and Table B on page 84) shows population is expected to decline slightly. This planning area includes more rural parts of the authority, where several schools serve villages that are some distance apart.

In 2019/20 there were unfilled Reception places.

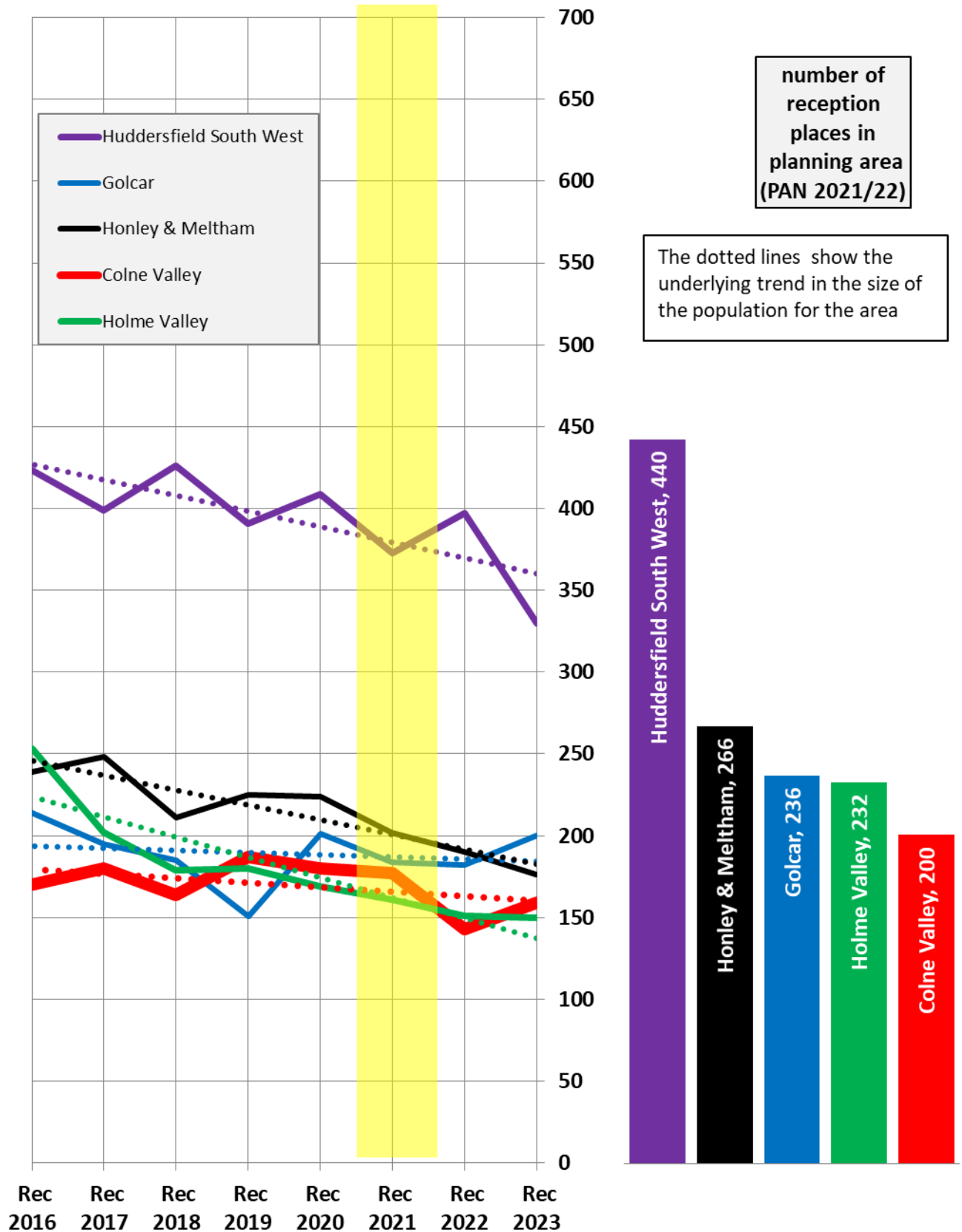
In 2020/21 there were a number of unfilled Reception places available at national offer day. The pattern of pupil distribution illustrates that the majority of children (87%) living in the planning area attend schools in the area, with a number of pupils (16%) attending schools here from neighbouring planning areas.

For 2021, 2022 and 2023 population data indicate a slightly declining population towards 2023, with a more significant dip in 2022. There is no need for additional places.

Place planning summary for Planning Area 6. Colne Valley	
Place planning data for three cohorts of children: Reception, Y1 and Y2 <i>From NHS Jan 2020 and School Census Jan 2020</i> <i>Note numbers in [square brackets] show the average number of children per year group</i>	
514 [171] children live in this PA (NHS) <ul style="list-style-type: none"> • 445 [148] go to schools in this PA • 56 [19] go to schools in other Kirklees PAs • 13 [4] go to schools in other LAs or have no school information available (at 2020/21 national offer day 2 were allocated reception places in Calderdale and 2 in Oldham) 	530[177] children go to school in this PA (Census) <ul style="list-style-type: none"> • 445 [148] Live in this PA • 84 [28] Live in other PAs • 1 [0] Live outside Kirklees
Average number of places used per year group Number of Reception places available (PAN 2021/22) Trend in number of children living in this PA per year group	177 200 slight decline 
Place planning strategy (assuming current patterns of migration, housing occupancy, parental preference etc) <ul style="list-style-type: none"> • Based on population data the projected need for places is below the capacity of available places • On balance, more children travel IN to schools in the PA from neighbouring PAs • No need for additional places. 	

Planning Area 6. Colne Valley
Chart showing pupil population trends and available school places

population trends in neighbouring planning areas
Reception 2016 to Reception 2023 (NHS)



The chart above shows the size of each year group in the child population in the planning area and the neighbouring planning areas for Reception cohorts Sep 2016 to Sep 2023. The dotted line shows the underlying trend in the size of the pupil population for each area.

The bar chart shows the number of Reception class places available in each planning area, based on the Published Admission Numbers (PANs) of the schools in the area. The yellow shading highlights the data for Reception classes in September 2021.

Planning Area 6. Colne Valley																
Table A. Number on roll - pupil census January 2020																
School Name	PAN 2021/22		Nursery					Primary							Total Pupils	
	KS1	KS2	< 2 PT	2+ PT	3+ PT	4+ PT	FT	4+ PT	4+ FT	5+	6+	7+	8+	9+		10+
Linthwaite Ardron Church of England (Voluntary Aided) Junior & Infant School	30	30	0	0	0	0	0	0	29	28	28	24	29	29	29	196
Linthwaite Clough J I & Early Years Unit	45	45	0	0	19	0	0	0	43	40	43	44	45	47	44	325
Marsden I & N School	60		0	4	19	0	2	0	39	35	52	0	0	0	0	151
Marsden Junior School		60	0	0	0	0	0	0	0	0	0	44	54	46	56	200
Nields Junior Infant & Nursery School	30	30	0	0	0	0	0	0	30	26	31	28	19	27	30	191
Slaithwaite CE (VC) J&I School	23	23	0	0	0	0	0	0	24	24	23	25	24	26	24	170
Wilberlee J & I School	12	12	0	0	0	0	0	0	12	11	12	12	11	14	12	84
	200	200	0	4	38	0	2	0	177	164	189	177	182	189	195	

Planning Area 6. Colne Valley															
Table B. Number of pupils in each year cohort resident in the planning area - school year 2019-20 - (NHS Jan 2020)															
future reception year groups				infant 2019/20			junior 2019/20				secondary 2019/20				
				Early years/KS1			Key Stage 2				Key Stage 3			KS4	
Reception Sep 2023	Reception Sep 2022	Reception Sep 2021	Reception Sep 2020	Reception 2019/20	Year 1	Year 2	Year 3	Year 4	Year 5	Year 6	Year 7	Year 8	Year 9	Year 10	Year 11
159	143	177	180	187	164	180	170	195	190	208	192	197	140	171	163

Planning Area 6. Colne Valley Table C. Where do children living in the Colne Valley planning area go to school? Reception - Year 6 (Jan 2020) School Attended	PAA of Residence					
	Linthwaite Clough J I & EY School	Marsden I & N School / Marsden Junior School	Nields J I & N School	Slaithwaite CE (VC) J & I School	Wilberlee J & I School	Grand Total
Berry Brow Infants and Nursery School	1					1
Birkby Junior School		1				1
Clough Head Junior & Infant School	7		2	4	4	17
Woodside Green, A SHARE Primary Academy	24		1			25
Crow Lane Primary and Foundation Stage School	1		1			2
Dalton School J I N		1				1
Fixby Junior & Infant School				1		1
Golcar Junior Infant & Nursery School	12	2		1	2	17
Helme Church of England Academy	7	4	4	1		16
Hillside Primary School		1				1
Holme J & I School	1					1
Honley CE (VC) J I & N School	1					1
Lindley Junior School		1				1
Linthwaite Ardron Church of England (Voluntary Aided) Junior & Infant School	93	2	2	7	2	106
Linthwaite Clough J I & Early Years Unit	210	5	7	5	5	232
Marsden I & N School	2	118	1			121
Marsden Junior School	5	179	3	1		188
Meltham C.E. (VC) Primary School	1	1	2			4
Meltham Moor Primary School		3		1		4
Moorlands Primary School					3	3
Netherthong Primary School	1			1		2
Netherton Infant and Nursery School	1					1
Nields Junior Infant & Nursery School	14	10	123	12	10	169
Oak CE Primary School	5					5
Paddock J I & N School	2					2
Reinwood Community Junior School	1				1	2
Reinwood Infant & Nursery School	1				1	2
Luck Lane, A SHARE Primary Academy		2				2
Scapegoat Hill J & I School				1	1	2
Slaithwaite CE (VC) J&I School	3		9	117	25	154
South Crosland CE (A) Junior School	1	2		1		4
St John's CE (VA) J & I School	2		2		2	6
St Joseph's Catholic Primary School (Huddersfield)			1			1
St Patrick's Catholic Primary School (Huddersfield)	3			1		4
Upperthong J & I School			1			1
Wellhouse J & I School	13	2	1	7	1	24
Wilberlee J & I School	4	3	10	26	38	81
Grand Total	416	337	170	187	95	1,205

Planning Area 6. Colne Valley Table D. Where do children attending school in Colne Valley live? Reception - Year 6 (Jan 2020) PAA of Residence	School Attended							
	Linthwaite Ardrion Church of England (Voluntary Aided) Junior & Infant School	Linthwaite Clough J I & Early Years Unit	Marsden I & N School	Marsden Junior School	Nields Junior Infant & Nursery School	Slaithwaite CE (VC) J&I School	Wilberlee J & I School	Grand Total
Hill View Academy		1						1
Beaumont Primary Academy / Oak CE Primary School	17	11	1	1	1			31
Clough Head J & I School		1			1			2
Woodside Green, A SHARE Primary Academy	45	36	1	4	5	3		94
Crow Lane Primary and Foundation Stage School	2				2			4
Dalton School J I N		1						1
Golcar J I & N School	5	3		1	2	5	2	18
Hillside Primary School		1						1
Honley CE (VC) J, I & N School	1	1						2
Linthwaite Clough J I & EY School	99	214	2	5	14	3	4	341
Marsden I & N School / Marsden Junior School	2	5	118	179	10		3	317
Meltham CE (VC) Primary School	4			1	3			8
Meltham Moor Primary School	1	4	2	4	1	3		15
Moorlands Primary School					1	1	1	3
Mount Pleasant Primary School	2							2
Netherton I & N School		2						2
Nields J I & N School	2	7	1	3	123	9	10	155
Paddock J I & N School	5				2			7
Reinwood I & N School / Reinwood Community Junior School	1	2						3
Lily Park, A SHARE Primary Academy	1	2		1		1		5
Scapegoat Hill J & I School					1			1
Slaithwaite CE (VC) J & I School	7	5		1	12	117	26	168
Spring Grove J I & N School		2						2
St Thomas CE (VC) Primary School		1						1
Upperthong J & I School					1		1	2
Wellhouse J & I School		1			2	3		6
Wilberlee J & I School	2	5			10	25	38	80
Grand Total	196	305	125	200	191	170	85	1,272