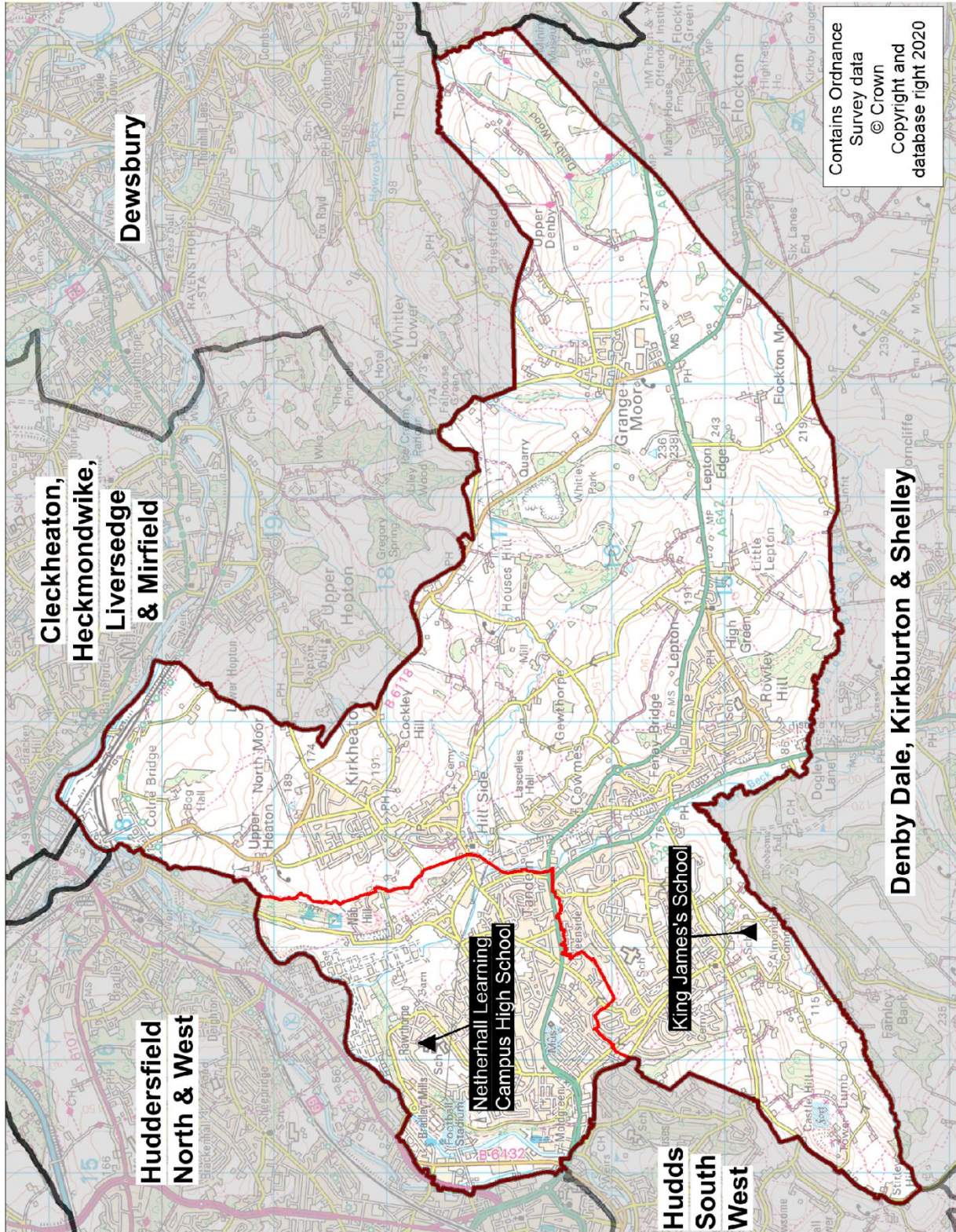


Planning Area 31: Huddersfield South & East and Kirkheaton



- ❖ King James's School
- ❖ Netherhall Learning Campus High School

Overview: Table B on page 193 and the chart on page 191 illustrate that the future year 7 cohort size of young people resident in this planning area will be broadly static with a modest peak in 2021.

Netherhall Learning Campus High School is part of an all-through federation with Netherhall St James C of E (VC) Infant and Nursery School and Netherhall Learning Campus Junior School. The school also incorporates the Kirklees Creative and Media Studio School with a 14-19 offer on site. King James's School is located in the southern part of the planning area serving Lepton, Kirkheaton, Grange Moor and Almondbury. The secondary phase of Almondbury Community School was removed from 1st September 2020 following a statutory process. The Priority Admission Area (PAA) of this school was divided between three schools as follows:

- King James's School PAA includes Almondbury Community School Primary and All Hallows' CE(VA) Primary School PAAs
- Netherhall Learning Campus High School includes all of Moldgreen Community Primary School and Dalton School PAA (previously, the areas south of Wakefield Road were part of the Almondbury Community School secondary PAA).
- Newsome Academy, which is in Huddersfield South West planning area, includes Lowerhouses CE(VC) Junior, Infant and Early Years School.

Secondary phase pupils from Almondbury Community School have transitioned to other local schools. King James's School, which received the majority of these pupils, is using the previous premises of Almondbury Community School (Fernside building) to help accommodate this bulge. Plans are well advanced to build a new teaching block on King James's School main site to help them manage the bulge as it works through the school and to enable a permanent increase in their PAN to 210 (subject to consultation).

Modest investment has also taken place at Netherhall Learning Campus High School to enable it to manage pupils transitioning from Almondbury Community School and to make a small increase in their PAN (subject to consultation).

In 2019/20 there were a number of unfilled Year 7 places at Almondbury Community School.

In 2020/21, at National Offer Day all Y7 places were allocated. Working closely with the LA, an additional 48 places were introduced in this planning area:


- King James's School +24 on a PAN of 186 to 210
- Netherhall Learning Campus High School +24 on a PAN of 131 to 155

The pattern of pupil distribution illustrates that around 68% of children who live in this planning area attend schools in the area, whilst 22% are securing places in neighbouring planning areas. 9% of pupils who are attending schools here are from neighbouring planning areas.

For 2021, 2022 and 2023 NHS population data suggests a broadly static position with a slight peak in 2021. There are established trends of pupils resident in this planning area accessing a school place in surrounding planning areas.

In making the decision to change the age range of Almondbury Community School via a statutory process, evidence was provided to show that there would remain sufficient school places in the wider area of Huddersfield South & East and South West. The LA continues to work with King James’s School and Netherhall Learning Campus high School to normalise their PANs at a level which will match local demand for places.

Longer term, the population data demonstrates a declining trend which may be lessened by the impact of future housing developments. This area will remain under review in the context of the wider South Kirklees area.

Place planning summary for Planning Area 31. Huddersfield South & East, Kirkheaton	
Place planning data for five secondary cohorts of children : Y7-Y11 From NHS Jan 2020 and School Census Jan 2020 Note numbers in [square brackets] show the average number of children per year group (ie totals / 5)	
<p>2339 [468] live in this PA (NHS)</p> <ul style="list-style-type: none"> • 1596 [319] go to schools in this PA • 524 [105] go to schools in other Kirklees PAs • 49 [10] go to schools in non-mainstream provisions • 170 [34] go to other LAs or are unknown (on 2020/21 national offer day 3 were allocated to other LAs) 	<p>1753 [351] go to school in this PA (census)</p> <ul style="list-style-type: none"> • 1596 [319] Live in this PA • 153 [31] Live in other PAs • 4 [1] Live outside Kirklees
<ul style="list-style-type: none"> • Average number of places used per year group • Number of Year 7 places available • Trend in number of children living in this PA per year group 	<ul style="list-style-type: none"> • 351 • 317 (PAN 2021/22) • broadly static with fluctuations 
<p>Place planning strategy (assuming current patterns of migration, housing occupancy, parental preference etc)</p> <ul style="list-style-type: none"> • Based on NHS population data the projected need for places is above the capacity of available places • On balance, more children travel OUT of the PA to schools in neighbouring PAs • There has been a significant change following the reduction of 120 places from 2020/21 and opportunities being explored for a modest increase in places at other local schools 	

Planning Area 31. Huddersfield South & East and Kirkheaton Table C. Where do children living in the Huddersfield South & East and Kirkheaton planning area go to school? Y7 - Y11 (Jan 2020) School Attended	PAA of Residence										
	All Hallows' CE VA Primary School / Hill View Academy	Almondbury Community School	Dalton School J I N	Grange Moor Primary School	Kirkheaton Primary School	Lepton CE (VC) J I & N School	Lowerhouses CE (VC) J, I & EY School	Moldgreen Community Primary School	Netherhall St James (VC) C of E Infant and Nursery School / Netherhall Learning Campus Junior School	Rowley Lane J I & N School	Grand Total
All Saints Catholic College, Specialist in Humanities	9	6	44	1	4	1	4	9	36		114
Almondbury Community School	66	62	26		1	4	6	15	8	4	192
Castle Hall Academy					3	3			1		7
Colne Valley High School	2	2	1				1		2		8
Heckmondwike Grammar School	1	2	4	2	1	4			3	1	18
Holmfirth High School	2		1						1	2	6
Honley High School	10	4	5			4	4	9	13	2	51
King James's School	150	83	41	60	169	209	27	14	9	104	866
Kirkburton Middle School	3	4	7	2		4	1		3	7	31
Moor End Academy	2	3	1			1	4	2	4		17
Netherhall Learning Campus High School	10	27	132		14	1	16	72	265	1	538
Newsome Academy	5	13	9			1	64	4	8	1	105
North Huddersfield Trust School	2	1					2	2	6		13
Royds Hall, A SHARE Academy	3	1	2				2	2	6		16
Salendine Nook High School Academy	2				1			2	6		11
Scissett Middle School		1				2					3
Shelley College, A SHARE Academy	14	9	24	11	4	18	9	3	8	10	110
St John Fisher Catholic Voluntary Academy				1							1
The Mirfield Free Grammar and Sixth Form		1	1		4	1			3		10
Whitcliffe Mount School	2			1							3
Grand Total	283	219	298	78	201	253	140	134	382	132	2,120

Planning Area 31. Huddersfield South & East and Kirkheaton Table D. Where do children attending school in Huddersfield South & East and Kirkheaton live? Y7 - Y11 (Jan 2020)	School Attended			Grand Total
	Almondbury Community School	King James's School	Netherhall Learning Campus High School	
PAA of Residence				
All Hallows' CE VA Primary School / Almondbury Community School	66	150	10	226
Almondbury Community School	62	83	27	172
Ashbrow School	1		5	6
Battysford C E (VC) Primary School		1		1
Beaumont Primary Academy / Oak CE Primary School	2	1	5	8
Berry Brow I & N School / Newsome Junior School		1	1	2
Birkby I & N School / Birkby Junior School	1	10	4	15
Christ Church CE Academy	1	1	7	9
Cowersley Primary School			2	2
Crow Lane Primary and Foundation Stage School	1		1	2
Crowlees CE (VC) J & I School			1	1
Dalton School J I N	26	41	132	199
Earlsheaton Infant School / Bywell CE (VC) Junior School			1	1
Farnley Tyas CE (VC) First School		1		1
Fieldhead Primary Academy			1	1
Flockton CE (VC) First School		4		4
Grange Moor Primary School		60		60
Highburton CE (C) First School		5	1	6
Hillside Primary School	2	2	5	9
Honley CE (VC) J, I & N School		2	1	3
Kaye's F & N School	1			1
Kirkburton CE (A) First School	1	2	1	4
Kirkheaton Primary School	1	169	14	184
Lepton CE (VC) J I & N School	4	209	1	214
Lindley CE Infant School / Lindley Junior School	4		1	5
Linthwaite Clough J I & EY School			1	1
Lowerhouses CE (VC) J, I & EY School	6	27	16	49
Marsden I & N School / Marsden Junior School			1	1
Meltham Moor Primary School			1	1
Moldgreen Community Primary School	15	14	72	101
Moorlands Primary School		2	1	3
Mount Pleasant Primary School		2	1	3
Netherthong Primary School		1		1
Netherton I & N School			1	1
New Mill Infant School / New Mill Junior School	1		1	2
Old Bank Academy			1	1
Overthorpe CofE Academy	1			1
Netherhall St James (VC) C of E Infant and Nursery School / Netherhall Learning Campus Junior School	8	9	265	282
Reinwood I & N School / Reinwood Community Junior School			1	1
Rowley Lane J I & N School	4	104	1	109
Scholes (Holmfirth) J & I School		1		1
Scissett CE Academy		1		1
Shelley First School		2	1	3
Shepley First School			1	1
Skelmanthorpe Academy		1	1	2
Slaithwaite CE (VC) J & I School	2			2
Spring Grove J I & N School			3	3
St Thomas CE (VC) Primary School	3	2	36	41
Upperthong J & I School		1		1
Whitechapel C of E Primary			1	1
Grand Total	213	909	627	1,749