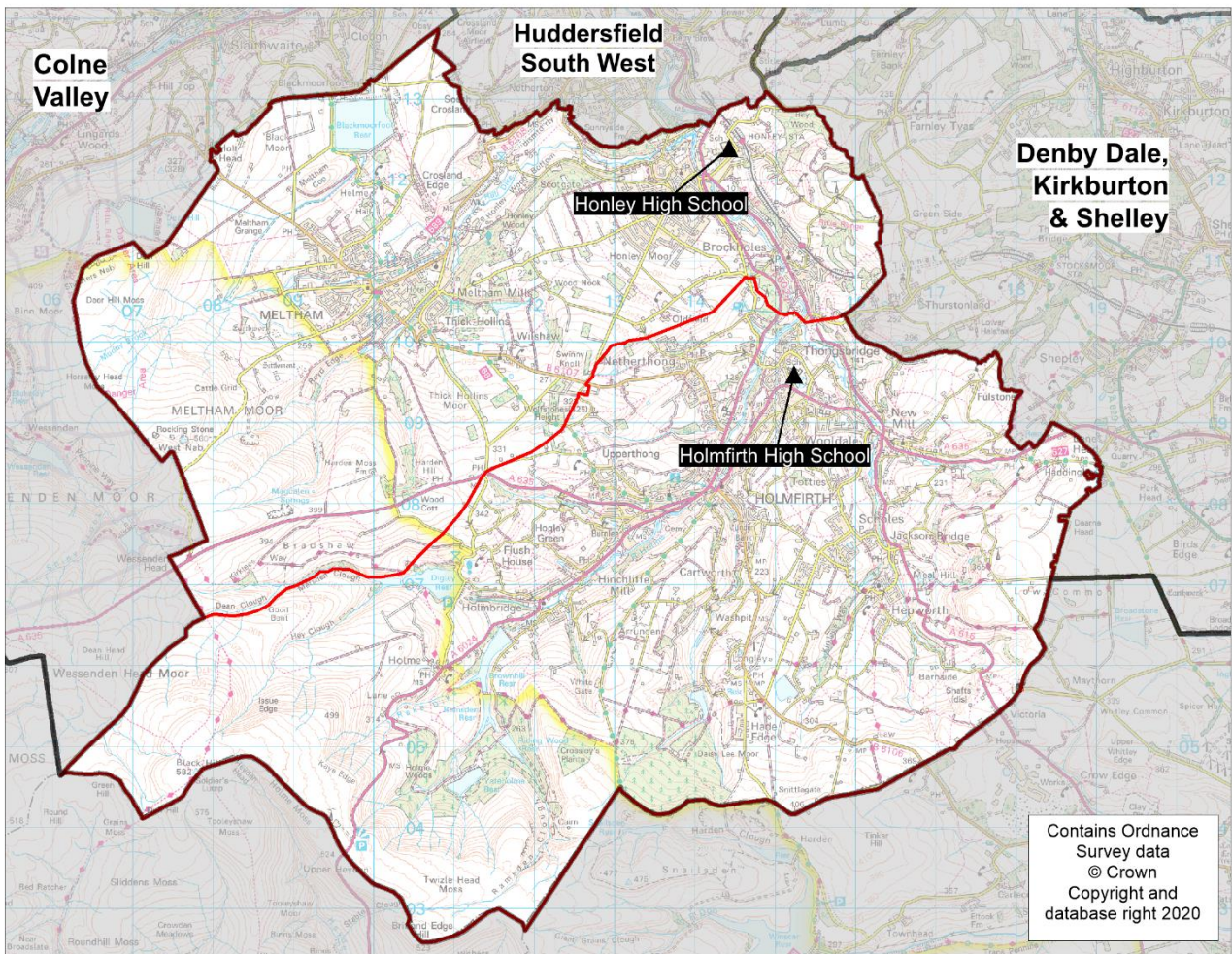


Planning Area 29: Holme Valley, Honley & Meltham



- ❖ Holmfirth High School
- ❖ Honley High School

Overview: Table B on page 193 and the chart on page 191 illustrate that the future year 7 cohort sizes of young people resident in this planning area are expected to broadly static with some downward fluctuations.

Holmfirth High School and Honley High School are oversubscribed schools accommodating pupils from other planning areas where parents express a preference.

In 2019/20 there were no year 7 vacancies.

In 2020/21 all year 7 places were allocated. Whilst population data indicated a slight decline in population, Holmfirth High School and Honley High School are popular and oversubscribed schools. It is not anticipated that there will be unfilled places in the foreseeable future as there is a well-established trend of pupil movement into the planning area. Both schools are likely to continue to be named as preferences for pupils from other areas of the LA.

The pattern of pupil distribution illustrates that around 90% of children who live in this planning area attend schools in the area, whilst 3% are securing places in neighbouring planning areas. 20% of pupils attending school here are from neighbouring planning areas.

For 2021, 2022 and 2023 population data suggest that basic need demand for places from those living in the planning area will remain broadly static between 2020/21 and 2023/24, with a dip in demand between. However, this is in the context of recent declining population and indications of future declines beyond this period. In addition, there are significantly more places available in this area than the numbers of pupils expected, therefore, there will remain sufficient places available even when future house building is taken into account.

It is important to note that currently, if additional places were established in this planning area, this would impact on neighbouring planning areas by creating a higher level of unfilled places in the neighbouring areas. This is because there are enough places for the local demographic with unfilled places being taken up by those living further away.


There are a number of housing development sites with planning permission in the area. Two sites with approximately 50 dwellings on each and one site with nearly 100 dwellings are under way and are expected to be completed by 2022. Engagement with secondary schools has taken place and this will continue to explore a cohesive approach to ensure sufficient secondary school places are available in the wider South Kirklees area.

Place planning summary for Planning Area 29. Holme Valley, Honley & Meltham

Place planning data for five secondary cohorts of children: Y7-Y11

From NHS Jan 2020 and School Census Jan 2020

Note numbers in [square brackets] show the **average** number of children per year group (ie totals / 5)

<p>2304 [461] live in this PA (NHS)</p> <ul style="list-style-type: none"> • 2068 [414] go to schools in this PA • 75 [15] go to schools in other Kirklees PAs • 20 [4] go to schools in non-mainstream provisions • 141 [28] go to other LAs or are unknown (in 2020/21 national offer day 4 were allocated to other LAs) 	<p>2612 [522] go to school in this PA (census)</p> <ul style="list-style-type: none"> • 2068 [414] Live in this PA • 532 [106] Live in other PAs • 12 [2] Live outside Kirklees
<ul style="list-style-type: none"> • Average number of places used per year group • Number of Year 7 places available • Trend in number of children living in this PA per year group 	<ul style="list-style-type: none"> • 522 • 519 (PAN 2021/22) • Broadly static with significant fluctuations 

Place planning strategy (assuming current patterns of migration, housing occupancy, parental preference etc)

- Based on NHS population data the projected need for places is **below** the capacity of available places
- On balance, more children travel **IN** to schools in the PA from neighbouring PAs
- Relatively few children travel between the PA and neighbouring LAs
- No need for additional places at this time.

Planning Area 29. Holme Valley, Honley & Meltham Table C. Where do children living in the Holme Valley, Honley & Meltham planning area go to school? Y7 - Y11 (Jan 2020) School Attended	PAA of Residence													Grand Total
	Brockholes CE (VC) J & I School	Hade Edge J & I School	Hepworth J & I School	Hinchliffe Mill J & I School	Holme J & I School	Holmfirth J I & N School	Honley CE (VC) J, I & N School	Meltham CE (VC) Primary School	Meltham Moor Primary School	Netherthong Primary School	New Mill Infant School / New Mill Junior School	Scholes (Holmfirth) J & I School	Upperthong J & I School	
All Saints Catholic College, Specialist in Humanities			2						1					3
Almondbury Community School										1				1
Colne Valley High School	1	1					2	7	17		1			29
Heckmondwike Grammar School									1					1
Holmfirth High School	75	47	44	95	7	169	54	30	31	104	287	162	171	1,276
Honley High School	28		2	6		3	325	212	189	10	8	1	8	792
King James's School							2			1		1	1	5
Kirkburton Middle School	1						1							2
Manor Croft Academy												1		1
Moor End Academy							1	1				1		3
Netherhall Learning Campus High School							1		1		1			3
Newsome Academy							3	1	4	1		2		11
North Huddersfield Trust School									1					1
Salendine Nook High School Academy						1		1			1			3
Scissett Middle School			2								1			3
Shelley College, A SHARE Academy		1					1				5		1	8
Thornhill Community, A SHARE Academy													1	1
Grand Total	105	49	50	101	7	173	390	252	245	116	305	168	182	2,143

Planning Area 29. Holme Valley, Honley & Meltham Table D. Where do children attending school in Holme Valley, Honley & Meltham live? Y7 - Y11 (Jan 2020)	School Attended		Grand Total
	Holmfirth High School	Honley High School	
PAA of Residence			
All Hallows' CE VA Primary School / Almondbury Community School	2	10	12
Almondbury Community School		4	4
Ashbrow School	1		1
Beaumont Primary Academy / Oak CE Primary School	2	72	74
Berry Brow I & N School / Newsome Junior School	2	51	53
Birdsedge First School	2		2
Birkby I & N School / Birkby Junior School	1	13	14
Brockholes CE (VC) J & I School	75	28	103
Carlinghow Academy		1	1
Christ Church CE Academy	1	1	2
Cowlersley Primary School	4	6	10
Crossley Fields J & I School		1	1
Crow Lane Primary and Foundation Stage School		2	2
Cumberworth CE (A) First School	1		1
Dalton School J I N	1	5	6
Denby Dale First and Nursery School	1		1
Emley First School		1	1
Farnley Tyas CE (VC) First School	1	3	4
Fixby J & I School	1		1
Flockton CE (VC) First School		1	1
Golcar J I & N School		3	3
Hade Edge J & I School	47		47
Hepworth J & I School	44	2	46
Highburton CE (C) First School		1	1
Hillside Primary School	2	33	35
Hinchliffe Mill J & I School	95	6	101
Holme J & I School	7		7
Holmfirth J I & N School	169	3	172
Honley CE (VC) J, I & N School	54	325	379
Hopton Primary School		1	1
Kirkburton CE (A) First School		1	1
Lepton CE (VC) J I & N School		4	4
Lindley CE Infant School / Lindley Junior School		1	1
Linthwaite Clough J I & EY School	1	9	10
Lowerhouses CE (VC) J, I & EY School		4	4
Marsden I & N School / Marsden Junior School		12	12
Meltham CE (VC) Primary School	30	212	242
Meltham Moor Primary School	31	189	220
Moldgreen Community Primary School		9	9
Moorlands Primary School		3	3
Mount Pleasant Primary School		31	31
Netherthong Primary School	104	10	114
Netherton I & N School	5	140	145
New Mill Infant School / New Mill Junior School	287	8	295
Nields J I & N School		9	9
Paddock J I & N School		3	3
Netherhall St James (VC) C of E Infant and Nursery School / Netherhall Learning Campus Junior School	1	13	14
Reinwood I & N School / Reinwood Community Junior School		3	3
Rowley Lane J I & N School	2	2	4
Royds Hall Community School (Beech)		3	3
Scholes (Holmfirth) J & I School	162	1	163
Shelley First School	1		1
Shepley First School	3	3	6
Slaithwaite CE (VC) J & I School		11	11
Spring Grove J I & N School		8	8
St Thomas CE (VC) Primary School		3	3
Thurstonland Endowed (VC) First School	8	2	10
Upperthong J & I School	171	8	179
Wellhouse J & I School		2	2
Wilberlee J & I School	1	3	4
Grand Total	1,320	1,280	2,600