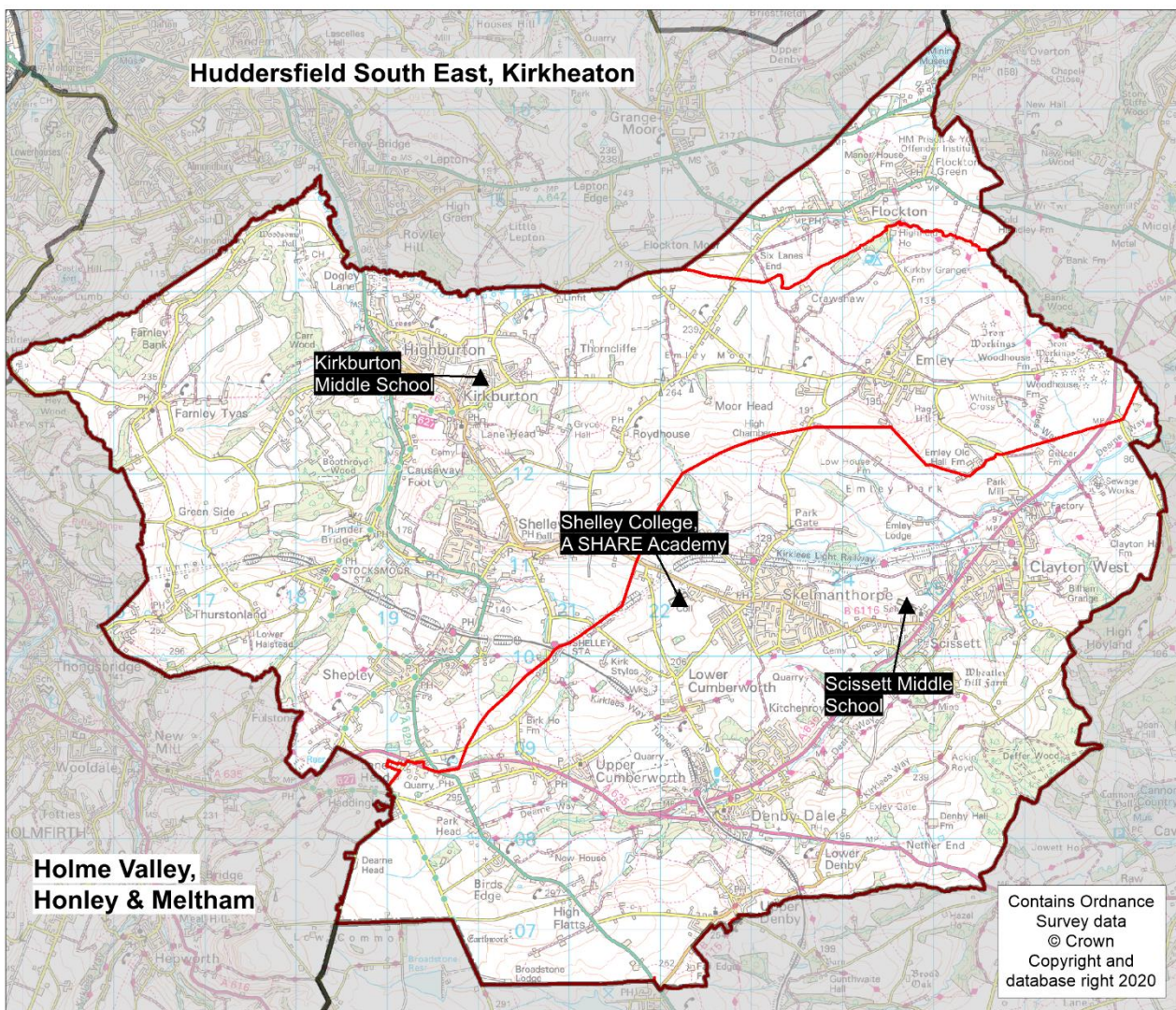


Planning Area 27: Denby Dale, Kirkburton & Shelley



- ❖ Kirkburton Middle School
- ❖ Scissett Middle School
- ❖ Shelley College, A SHARE Academy

Overview: Three tier system analysis within this section demonstrates the demand for secondary places from young people resident in this planning area will remain broadly static with fluctuations.

Serving a semi-rural area of the local authority adjacent to Barnsley LA, this planning area has a three-tier system of education. There are two middle schools, with the normal transfer being at age 10 (into year 6) at Scissett Middle School and Kirkburton Middle School, and then at age 13 (into year 9) at Shelley College, A SHARE Academy which has sixth form provision.

In 2019/20 there were no vacancies in year 6 at Scissett Middle School or Kirkburton Middle School.

In 2020/21 at National Offer Day there were a small number of vacancies in year 6 at Kirkburton Middle School and no vacancies at Scissett Middle School. There were also no vacancies in year 9 at Shelley College.

Movement into the area from neighbouring planning areas has declined in recent years as the local population experienced a small amount of growth. There is a mismatch between first school places (KS1 375 and KS2 380) and the secondary places (middle 362 and high 360). A contributing factor to this mismatch has been the decision in the past by some own admission authority first schools to increase their PANs and/or admit over PAN. The middle and high schools have been flexible in admitting over PAN to accommodate local families, but this has created some challenges for them.

The average pupil distribution based on year 7 to 11 at January 2020 census illustrates that around 87% of children who live in this planning area attend schools in the area, whilst 4% are securing places in neighbouring planning areas. 10% of pupils attending schools here are from neighbouring planning areas, with a smaller percentage of around 3% from other local authorities.

Additional analysis focused on admission data (Table 27 C page 213) at the transition points in the three-tier system suggests that relatively few children are being allocated schools in this area from outside the area. However, this fluctuates from year to year and there have been a number of successful appeals following the initial allocations.

For 2021, 2022 and 2023 the NHS population data indicates a slightly declining trend in future Year 6 middle school cohorts and a broadly static trend with fluctuations for Y9 high school cohorts. House building could change this position as there are several development sites in the area (see below). A scheme has been agreed to facilitate a small increase in the number of places available at Scissett Middle School (subject to an admission consultation) to ensure there continue to be sufficient places.

Again, specific analysis relating to the three-tier system has been provided, focusing on population (Table 27 B page 212) and pupils already on role in the system (Table 27 A page 211).

The current pupil on roll modelling (January Census 2020) assumes children in the first schools will move through the three-tier system regardless of where they live. This modelling indicates numbers building each year to a peak of 1119 pupils of high school age in 2023/24, against a capacity of 1080 places. Beyond this time there are indications that numbers will return to recent 'normal levels'. There may therefore be a need to consider some additional bulge places on a temporary basis. However, the impact of house building and parental choice will need to remain under review

There are sites with planning permission approval for housing development. Of the two sites with over 100 dwellings planned, both developments have started and are likely to complete over the next 3-4 years.


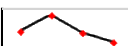
Place planning summary for Planning Area 27. Denby Dale, Kirkburton & Shelley	
Place planning data for five secondary cohorts of children : Y7-Y11 From NHS Jan 2020 and School Census Jan 2020 Note numbers in [square brackets] show the average number of children per year group (ie totals / 5)	
1844 [369] live in this PA (NHS) <ul style="list-style-type: none"> 1600 [320] go to schools in this PA 73 [15] go to schools in other Kirklees PAs 12 [2] go to schools in non-mainstream provisions 159 [32] go to other LAs or are unknown (in 2020/21 national offer day 4 were allocated to Barnsley and 2 to other LAs) 	1827 [365] go to school in this PA (census) <ul style="list-style-type: none"> 1600 [320] Live in this PA 175 [35] Live in other PAs 52 [10] Live outside Kirklees
<ul style="list-style-type: none"> Average number of places used per year group Number of Year 7 places available Trend in number of children living in this PA per year group 	<ul style="list-style-type: none"> 365 362 (PAN 2021/22) Slightly declining trend for Y6  <p>and broadly static for Y9</p>  <p>with fluctuations</p>
Place planning strategy (assuming current patterns of migration, housing occupancy, parental preference etc) <ul style="list-style-type: none"> On balance, more children travel IN to schools in the PA from neighbouring PAs Relatively few children travel between the PA and neighbouring LAs There has been pressure in the transition from first schools to the middle schools as there is a mismatch in PANs. There are several sites with planning permission for housing development which could impact on the future demand for school places. There are plans for a small increase in the number of middle school places. 	

Table C. PAN 2020/21		
First School	KS1	375
	KS2	380
Middle School		362
High School		360

The table above shows the number of places that will be made available in 2021/22 in the three-tier system across all Key Stages.

Table 27 A. Number on roll as at January 2020 feeding through the three-tier system.

Number on roll - pupil census January 2020								
First Schools in Shelley planning Area						Kirkburton Middle School		
Reception	Y1	Y2	Y3	Y4	Y5	Y6	Y7	Y8
153	161	153	169	165	155	173	176	167
						2019/20 total = 516		

Number on roll - pupil census January 2020								
First Schools in Skelmanthorpe & Denby Dale						Scissett Middle School		
Reception	Y1	Y2	Y3	Y4	Y5	Y6	Y7	Y8
190	189	189	194	210	192	197	198	205
						2019/20 total = 600		

Both Middle Schools				
Joint capacity based on PANs 1086				
Future numbers based on existing children in feeder first schools				
Year	Y6	Y7	Y8	Total
2019/20	370	374	372	1116
2020/21	347	370	374	1091
2021/22	375	347	370	1092
2022/23	363	375	347	1085
2023/24	342	363	375	1080
2024/25	350	342	363	1055

Kirkburton Middle School				
Capacity based on PAN 2020/21 167 x 3 = 501				
Future numbers based on existing children in feeder first schools				
Year	Y6	Y7	Y8	Total
2019/20	173	176	167	516
2020/21	155	173	176	504
2021/22	165	155	173	493
2022/23	169	165	155	489
2023/24	153	169	165	487
2024/25	161	153	169	483

Scissett Middle School				
Capacity based on PAN 2020/21 195 x 3 = 585				
Future numbers based on existing children in feeder first schools				
Year	Y6	Y7	Y8	Total
2019/20	197	198	205	600
2020/21	192	197	198	587
2021/22	210	192	197	599
2022/23	194	210	192	596
2023/24	189	194	210	593
2024/25	189	189	194	572

Shelley College				
Capacity based on PAN 2020/21 360 x 3 =1080 (Y9 -Y11 ONLY)				
Future numbers based on existing children in middle schools				
Year	Y9	Y10	Y11	Total
2019/20	363	362	357	1,082
2020/21	372	363	362	1,097
2021/22	374	372	363	1,109
2022/23	370	374	372	1,116
2023/24	347	370	374	1,119
2024/25	375	347	370	1,092
2025/26	363	375	347	1,085

The tables above model the numbers of existing children who were on roll as of January 2020. The assumption used is that all first school pupils feed through to their associated middle schools and then the high school within the three-tier system.

Table 27 B. Number of children in the planning area based on NHS January 2020 working through the three-tier system

The first table shows the number of pupils in each cohort resident in the planning area for the school year 2019/20 based on NHS population data January 2020. The following illustrations model these existing pupils moving from the first school phase to the middle school phase and then onto the high school phase.

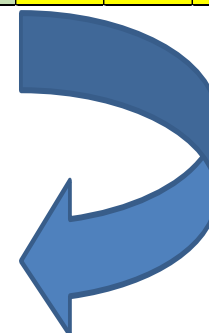
Number of children and young people living in Denby Dale, Kirkburton & Shelley (NHS Jan 2020)														
	Future year 6 populations								Middle School and Secondary pupils 2018/19					
									Middle School			Secondary		
Age 31.8.2019>>	2	3	4	5	6	7	8	9	10	11	12	13	14	15
Year 6 in	Y6 2027	Y6 2026	Y6 2025	Y6 2024	Y6 2023	Y6 2022	Y6 2021	Y6 2020	Y6 2019	Y7	Y8	Y9	Y10	Y11
Year 9 in	Y9 2030	Y9 2029	Y9 2028	Y9 2027	Y9 2026	Y9 2025	Y9 2024	Y9 2023	2022	2021	2020			
Primary Planning Area for Shelley	104	125	114	118	135	156	135	165	163	160	166	195	171	163
Primary Planning Area for Skelmanthorpe and Denby Dale	132	144	159	165	204	191	192	197	216	188	198	201	195	198
Secondary Planning Area for Denby Dale, Kirkburton & Shelley	236	269	273	283	339	347	327	362	379	348	364	396	366	361



Kirkburton Middle School				
Future numbers based on NHS Jan 2020 data in PAA (2019/20 PAN - 167 x 3 years = 501)				
Year	Y6	Y7	Y8	Total
2019/20	163	160	166	489
2020/21	165	163	160	488
2021/22	135	165	163	463
2022/23	156	135	165	456
2023/24	135	156	135	426
2024/25	118	135	156	409

Combined Middle Schools				
Future numbers based on NHS Jan 2020 data in PAA (2019/20 total PAN = 1086)				
Year	Y6	Y7	Y8	Total
2019/20	379	348	364	1091
2020/21	362	379	348	1089
2021/22	327	362	379	1068
2022/23	347	327	362	1036
2023/24	339	347	327	1013
2024/25	283	339	347	969

Scissett Middle School				
Future numbers based on NHS Jan 2020 data in PAA (2019/20 PAN - 195 x 3 years = 585)				
Year	Y6	Y7	Y8	Total
2019/20	216	188	198	602
2020/21	197	216	188	601
2021/22	192	197	216	605
2022/23	191	192	197	580
2023/24	204	191	192	587
2024/25	165	204	191	560



Shelley College				
Future numbers based on NHS Jan 2020 data in PAA (2019/20 PAN - 360 x 3 years = 1080 (Y9 - Y11 Only))				
Year	Y9	Y10	Y11	Total
2019/20	396	366	361	1123
2020/21	364	396	366	1126
2021/22	348	364	396	1108
2022/23	379	348	364	1091
2023/24	362	379	348	1089
2024/25	327	362	379	1068

Table 27 C. Middle School and High School allocations based on Pupil Admissions data as of January 2020

Scissett Middle School

	2015/16		2016/17		2017/18		2018/19		2019/20		2020/21	
Feeder First School	186	95.9%	185	97.9%	203	98.5%	192	95.5%	195	98.5%	184	94.4%
Non-Feeder First School	7	3.6%	0		1	0.5%	3	1.5%	2	1.0%	5	2.6%
Other School	1	0.5%	4	2.1%	2	1.0%	6	3.0%	1	0.5%	6	3.1%
	194		189		206		201		198		195	

Kirkburton Middle School

	2015/16		2016/17		2017/18		2018/19		2019/20		2020/21	
Feeder First School	138	71.1%	153	91.6%	157	93.5%	158	94.6%	152	88.4%	149	90.3%
Non-Feeder First School	4	2.1%	2	1.2%	4	2.4%	0		1	0.6%	12	7.3%
Other School	13	6.7%	12	7.2%	7	4.2%	9	5.4%	19	11.0%	4	2.4%
	155		167		168		167		172		165	

Shelley College

	2015/16		2016/17		2017/18		2018/19		2019/20		2020/21	
Scissett Middle	173	53.1%	190	53.5%	182	52.1%	189	52.5%	190	52.8%	204	55.9%
Kirkburton Middle	150	46.0%	165	46.5%	163	46.7%	164	45.6%	165	45.8%	160	43.8%
Other school	3	0.9%	0	0.0%	4	1.1%	7	1.9%	5	1.4%	1	0.3%
	326		355		349		360		360		365	

Planning Area 27. Denby Dale, Kirkburton & Shelley Table C. Where do children living in the Denby Dale, Kirkburton & Shelley planning area go to school? Y7 - Y11 (Jan 2020) School Attended	PAA of Residence															Grand Total
	Birdsedge First School	Cumberworth CE (A) First School	Denby CE (A) First School	Denby Dale First and Nursery School	Emley First School	Farnley Tyas CE (VC) First School	Flockton CE (VC) First School	Highburton CE (C) First School	Kaye's F & N School	Kirkburton CE (A) First School	Scissett CE Academy	Shelley First School	Shepley First School	Skelmanthorpe Academy	Thurstonland Endowed (VC) First School	
All Saints Catholic College, Specialist in Humanities					1				1							2
Almondbury Community School									1	1						2
Heckmondwike Grammar School							2								1	3
Holmfirth High School	2	1		1	1						1	3			8	17
Honley High School					1	3	1	1		1			3		2	12
King James's School						1	4	5		2	1	2		1		16
Kirkburton Middle School	2	1			31	9	5	67	4	36	2	69	60	4	15	305
Moor End Academy				1												1
Netherhall Learning Campus High School								1		1		1	1	1		5
Newsome Academy								3					1	1	1	6
North Huddersfield Trust School												1				1
Royds Hall, A SHARE Academy														1		1
Scissett Middle School	9	17	7	77	12		20	2	80	2	25	11	5	112		379
Shelley College, A SHARE Academy	25	27	15	120	51	8	41	77	98	58	37	120	76	146	17	916
Spenn Valley High School									1							1
St John Fisher Catholic Voluntary Academy													1			1
The Mirfield Free Grammar and Sixth Form							1									1
Thornhill Community, A SHARE Academy							4									4
Grand Total	38	46	22	199	96	22	76	158	185	101	65	205	150	266	44	1,673

Planning Area 27. Denby Dale, Kirkburton & Shelley Table D. Where do children attending school in Denby Dale, Kirkburton & Shelley live? Y7 - Y11 (Jan 2020) PAA of Residence	School Attended			Grand Total
	Kirkburton Middle School	Scissett Middle School	Shelley College	
All Hallows' CE VA Primary School / Almondbury Community School	3		14	17
Almondbury Community School	4	1	9	14
Beaumont Primary Academy / Oak CE Primary School			1	1
Berry Brow I & N School / Newsome Junior School			1	1
Birdsedge First School	2	9	25	36
Birkby I & N School / Birkby Junior School			1	1
Brockholes CE (VC) J & I School	1			1
Cowlersley Primary School			1	1
Cumberworth CE (A) First School	1	17	27	45
Dalton School J I N	7		24	31
Denby CE (A) First School		7	15	22
Denby Dale First and Nursery School		77	120	197
Emley First School	31	12	51	94
Farnley Tyas CE (VC) First School	9		8	17
Flockton CE (VC) First School	5	20	41	66
Grange Moor Primary School	2		11	13
Hade Edge J & I School			1	1
Hepworth J & I School		2		2
Highburton CE (C) First School	67	2	77	146
Hightown J, I & N School			2	2
Hillside Primary School			1	1
Honley CE (VC) J, I & N School	1		1	2
Hopton Primary School	1		1	2
Kaye's F & N School	4	80	98	182
Kirkburton CE (A) First School	36	2	58	96
Kirkheaton Primary School			4	4
Lepton CE (VC) J I & N School	4	2	18	24
Lowerhouses CE (VC) J, I & EY School	1		9	10
Moldgreen Community Primary School			3	3
Netherton I & N School			1	1
New Mill Infant School / New Mill Junior School		1	5	6
Overthorpe CofE Academy	2		2	4
Paddock J I & N School			1	1
Netherhall St James (VC) C of E Infant and Nursery School / Netherhall Learning Campus Junior School	3		8	11
Rowley Lane J I & N School	7		10	17
Scissett CE Academy	2	25	37	64
Shelley First School	69	11	120	200
Shepley First School	60	5	76	141
Skelmanthorpe Academy	4	112	146	262
St Thomas CE (VC) Primary School	1			1
Thornhill J & I School			1	1
Thurstonland Endowed (VC) First School	15		17	32
Upperthong J & I School			1	1
Windmill CE (VC) Primary School			1	1
Grand Total	342	385	1,048	1,775