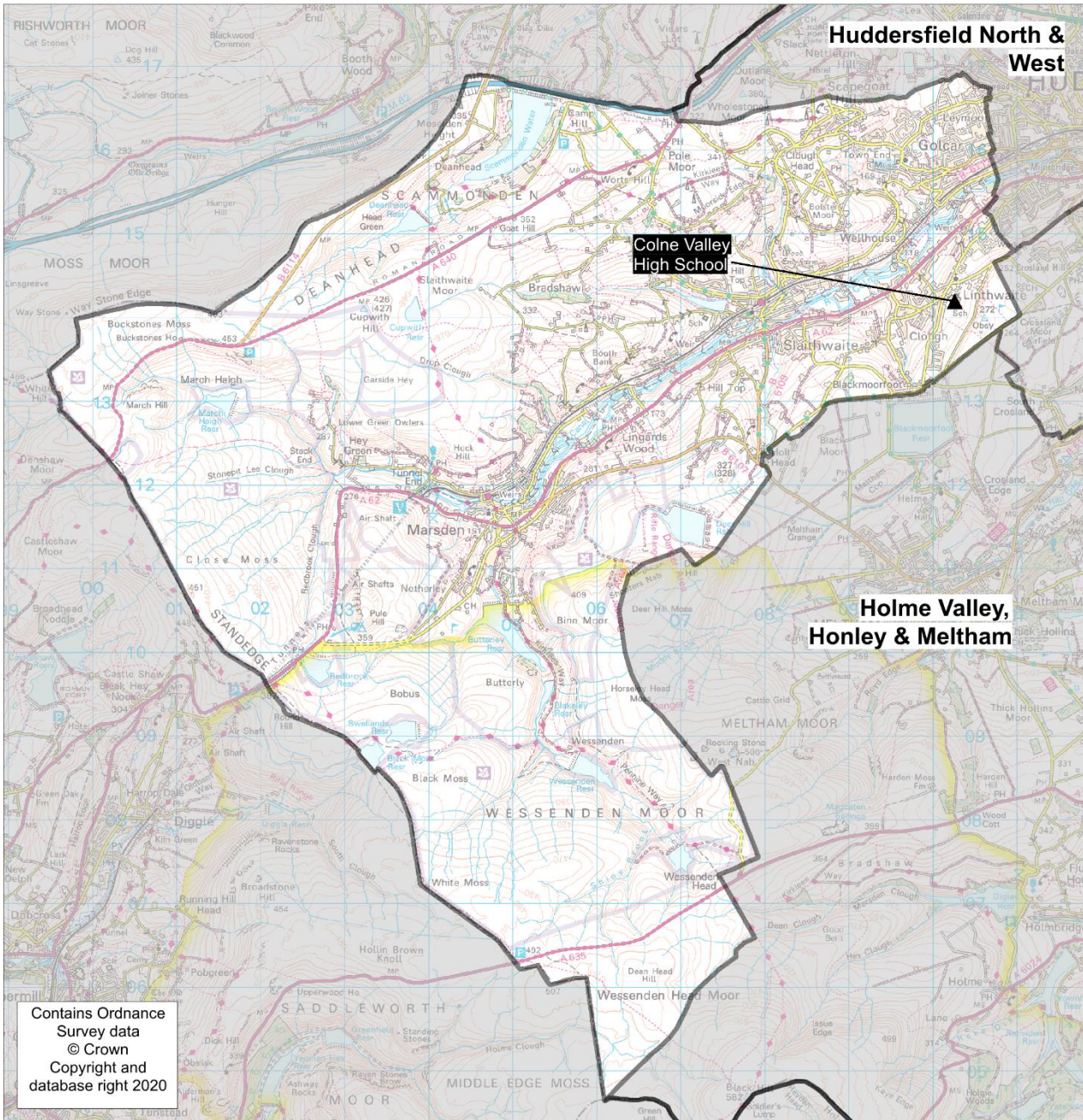


Planning Area 26: Colne Valley



❖ Colne Valley High School


Overview: Table B on page 193 and the chart on page 191 illustrate that the future year 7 cohort sizes of young people resident in this planning will on balance slightly decline. Colne Valley High School serves a wide geographical area made up from rural and semi-rural areas.

In 2019/20 there were no unfilled places in Y7 at Colne Valley High School.

In 2020/21 on National Offer Day there were no vacancies. An additional 12 places were added as a bulge (Colne Valley High School PAN 287 + 12 total 299). There remains modest pupil movement in and out of the planning area. This is partly attributed to the children living in the PAA and attending Lily Park, a SHARE Primary Academy, which is part of the all-through school Royds Hall, a SHARE Academy, who have the right to continue their place.

The pattern of pupil distribution illustrates that around 71% of children who live in this planning area attend schools in the area, whilst 17% are securing places in neighbouring planning areas. 21% of pupils attending school here are from neighbouring planning areas, with a smaller percentage of around 1% from other local authorities.

For 2021, 2022 and 2023 NHS population data suggests a slight decline in population, although there is also a slight peak in 2022/23. It is not anticipated there is a need for establishing additional places on a permanent basis, although a moderate bulge may be required again in 2022/23. This will be kept under review. Engagement with secondary schools will continue to explore a cohesive approach to ensure sufficient secondary school places are available in the wider South Kirklees area.

| Place planning summary for Planning Area 26. Colne Valley | |
|---|---|
| Place planning data for five secondary cohorts of children : Y7-Y11 From NHS Jan 2020 and School Census Jan 2020 Note numbers in [square brackets] show the average number of children per year group (ie totals / 5) | |
| <p>1434 [287] live in this PA (NHS)</p> <ul style="list-style-type: none"> • 1019 [204] go to schools in this PA • 250 [50] go to schools in other Kirklees PAs • 14 [3] go to schools in non-mainstream provisions • 151 [30] go to other LAs or are unknown (in 2020/21 national offer day 7 were allocated to Calderdale and 1 to other LAs) | <p>1304 [261] go to school in this PA (census)</p> <ul style="list-style-type: none"> • 1019 [204] Live in this PA • 275 [55] Live in other PAs • 10 [2] Live outside Kirklees |
| <ul style="list-style-type: none"> • Average number of places used per year group • Number of Year 7 places available • Trend in number of children living in this PA per year group | <ul style="list-style-type: none"> • 261 • 287 (PAN 2021/22) • Slight decline  |
| <p>Place planning strategy (assuming current patterns of migration, housing occupancy, parental preference etc)</p> <ul style="list-style-type: none"> • Based on NHS population data the projected need for places is within the capacity of available places • On balance, the number of children traveling IN and OUT to schools in this PA from neighbouring PAs is similar • Relatively few children travel between the PA and neighbouring LAs • No immediate need for additional places. | |

| Planning Area 26. Colne Valley Table C. Where do children living in the Colne Valley planning area go to school? Y7 - Y11 (Jan 2020) | PAA of Residence | | | | | | | | | | |
|---|-----------------------------|-----------------------|--------------------------------------|---|-----------------------|---------------------------------------|--------------------------------|-------------------------------------|------------------------|------------------------|--------------|
| | Clough Head J & I School | Golcar J I & N School | Linthwaite Clough J I & EY School | Marsden I & N School / Marsden Junior School | Nields J I & N School | Lily Park, A SHARE Primary Academy | Scapegoat Hill J & I School | Slaithwaite CE (VC) J & I School | Wellhouse J & I School | Wilberlee J & I School | Grand Total |
| All Saints Catholic College, Specialist in Humanities | | 6 | 3 | 2 | 1 | 1 | 1 | 1 | | | 15 |
| Almondbury Community School | | | | | | | | 2 | | | 2 |
| Colne Valley High School | 23 | 188 | 259 | 199 | 92 | 83 | 28 | 92 | 18 | 37 | 1,019 |
| Heckmondwike Grammar School | | 1 | 1 | | | | | | | | 2 |
| Holmfirth High School | | | 1 | | | | | | | 1 | 2 |
| Honley High School | | 3 | 9 | 12 | 9 | 3 | | 11 | 2 | 3 | 52 |
| Moor End Academy | | 2 | 2 | 3 | 2 | 4 | | 1 | 2 | | 16 |
| Netherhall Learning Campus High School | | | 1 | 1 | | | | | | | 2 |
| Newsome Academy | | | 2 | | | 2 | | 1 | | | 5 |
| North Huddersfield Trust School | | | | 1 | | 1 | | | | | 2 |
| Royds Hall, A SHARE Academy | | 21 | 6 | 1 | 2 | 63 | 1 | 5 | | 2 | 101 |
| Salendine Nook High School Academy | 1 | 18 | 5 | | | 19 | 3 | 1 | 1 | 3 | 51 |
| Grand Total | 24 | 239 | 289 | 219 | 106 | 176 | 33 | 114 | 23 | 46 | 1,269 |

| Planning Area 26. Colne Valley Table D. Where do children attending school in Colne Valley live? Y7 - Y11 (Jan 2020) PAA of Residence | School Attended | |
|--|--------------------------|--------------|
| | Colne Valley High School | Grand Total |
| All Hallows' CE VA Primary School / Almondbury Community School | 2 | 2 |
| Almondbury Community School | 2 | 2 |
| Battysford C E (VC) Primary School | 1 | 1 |
| Beaumont Primary Academy / Oak CE Primary School | 49 | 49 |
| Berry Brow I & N School / Newsome Junior School | 2 | 2 |
| Birkby I & N School / Birkby Junior School | 3 | 3 |
| Brockholes CE (VC) J & I School | 1 | 1 |
| Christ Church CE Academy | 1 | 1 |
| Clough Head J & I School | 23 | 23 |
| Cowersley Primary School | 119 | 119 |
| Crow Lane Primary and Foundation Stage School | 25 | 25 |
| Dalton School J I N | 1 | 1 |
| Fieldhead Primary Academy | 1 | 1 |
| Golcar J I & N School | 188 | 188 |
| Hade Edge J & I School | 1 | 1 |
| Hillside Primary School | 2 | 2 |
| Honley CE (VC) J, I & N School | 2 | 2 |
| Lindley CE Infant School / Lindley Junior School | 2 | 2 |
| Linthwaite Clough J I & EY School | 259 | 259 |
| Lowerhouses CE (VC) J, I & EY School | 1 | 1 |
| Marsden I & N School / Marsden Junior School | 199 | 199 |
| Meltham CE (VC) Primary School | 7 | 7 |
| Meltham Moor Primary School | 17 | 17 |
| Moorlands Primary School | 10 | 10 |
| Mount Pleasant Primary School | 1 | 1 |
| Netherton I & N School | 3 | 3 |
| New Mill Infant School / New Mill Junior School | 1 | 1 |
| Nields J I & N School | 92 | 92 |
| Old Bank Academy | 1 | 1 |
| Paddock J I & N School | 14 | 14 |
| Netherhall St James (VC) C of E Infant and Nursery School / Netherhall Learning Campus Junior School | 2 | 2 |
| Reinwood I & N School / Reinwood Community Junior School | 3 | 3 |
| Royds Hall Community School (Beech) | 83 | 83 |
| Scapegoat Hill J & I School | 28 | 28 |
| Slaithwaite CE (VC) J & I School | 92 | 92 |
| Spring Grove J I & N School | 1 | 1 |
| Wellhouse J & I School | 18 | 18 |
| Wilberlee J & I School | 37 | 37 |
| Grand Total | 1,294 | 1,294 |