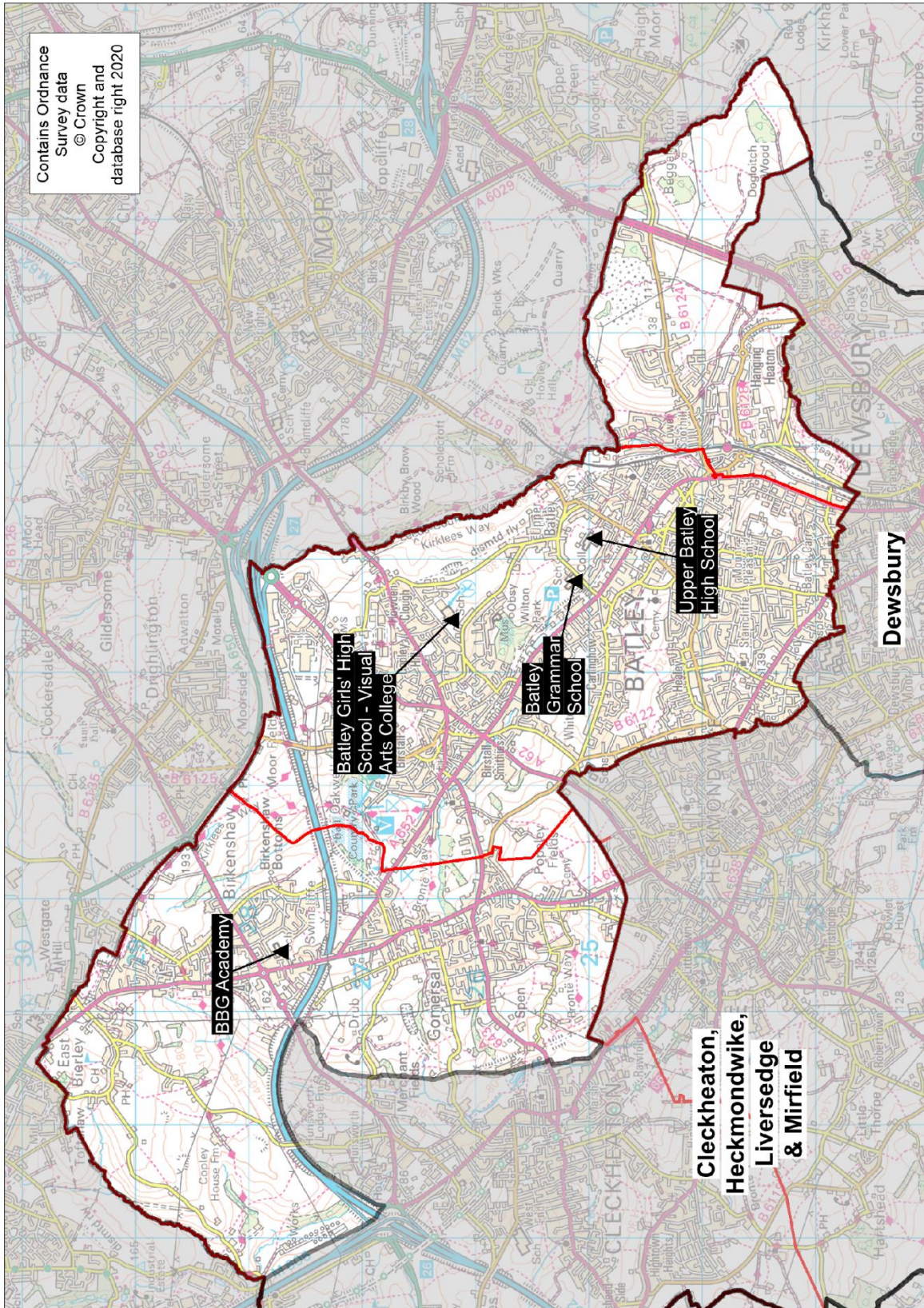


Planning Area 24: Batley, Birkenshaw, Birstall & Gomersal



- ❖ Batley Girls' High School – Visual Arts College
- ❖ Batley Grammar School
- ❖ BBG Academy
- ❖ Upper Batley High School

Overview: Table B on page 193 and the chart on page 191 illustrate that the future year 7 cohort size of young people resident in this planning area will peak in 2022 before it begins to decline. A modest number of additional places will be required in the wider area of North Kirklees.

There are two schools in this planning area that offer single gender provision which are Batley Girls' High School and Upper Batley High School. There is co-education provision at Batley Grammar School and BBG Academy. This planning area is adjacent to two neighbouring local authorities and there has been a well-established trend of outward migration of secondary aged pupils to Leeds with some inward flow from Bradford. Part of this planning area is in the priority admission area of Whitcliffe Mount School which accounts for some of the movement of pupils to Cleckheaton, Heckmondwike, Liversedge & Mirfield (planning area 25).

In 2019/20 As a result of expected population growth, additional capacity of 32 places as a 'bulge year' were introduced:

- o Batley Girls' High School +22 on a PAN of 211 to 233
- o Upper Batley High School offered additional 10 places on a PAN of 150 to 160 (having previously reduced their PAN from 178 in 2018/19).

These places were required on National Offer Day to ensure every child was allocated a school place. However, the number of Year 7 starters in September 2019 was within the original PAN of 150 for Upper Batley High School as parents exercised their right to change their preference and/or appeal for a place at other schools

In 2020/21 At National Offer Day, Batley Girls' High School, Batley Grammar School, BBG Academy and Upper Batley High School were all full.

Batley Girls High School offered an extra 22 places taking their PAN of 211 to 233 a year before this becomes a permanent change.

The pattern of pupil distribution illustrates that around 60% of children that live in this planning area attend schools in the area, around 21% are securing places in neighbouring planning areas, particularly Cleckheaton, Heckmondwike, Liversedge & Mirfield and Dewsbury. Around 22% of pupils attending schools here are from neighbouring planning areas and 4% from other LAs.


For 2021, 2022 and 2023 NHS population data suggests a peak in 2022 which will slightly dip in 2023. Beyond this time the trend is towards a decline. Upper Batley High School have consulted upon and decided to increase their PAN to 160 from 2021/22.

Given the complex pattern of provision across the borough and the pupil distribution trends, a strategic approach is required across a wider geographical area. The North Kirklees planning areas of Cleckheaton, Heckmondwike, Liversedge and Mirfield and Dewsbury are being considered together in terms of growth in demand and solutions to address this.

It is anticipated that in the wider area of North Kirklees due to the rising population and the impact of housing development there will be a need for a modest number of additional places

on a more permanent basis which are supplemented with some bulge classes in peak years. Capital investment may be required to support the permanent increase. The expected modest increase in pupil numbers does not support the need for a new secondary school. This is particularly important when the current trend of declining primary pupil numbers starts to feed into the secondary phase in around 3 to 4 years' time. The goodwill and collaboration of the Kirklees school system demonstrated by the introduction of additional places for both 2019/20 and 2020/21, provides confidence that a similar approach can meet future need with investment in some cases. Further engagement will take place to identify solutions within existing schools for 2021/22 and beyond.

Looking longer term, there is a strategic development site in the Kirklees Local Plan on the border of this planning area and the Dewsbury planning area which is likely to generate additional demand for secondary places in the wider area (+5 years).

Place planning summary for Planning Area 24. Batley, Birkenshaw, Birstall & Gomersal	
Place planning data for five secondary cohorts of children: Y7-Y11 From NHS Jan 2020 and School Census Jan 2020 Note numbers in [square brackets] show the average number of children per year group (ie totals / 5)	
4237 [847] live in this PA (NHS) <ul style="list-style-type: none"> • 2543 [509] go to schools in this PA • 905 [181] go to schools in other Kirklees PAs • 73 [15] go to schools in non-mainstream provisions • 716 [143] go to other LAs or are unknown (in 2020/21 national offer day 109 were allocated to Leeds and 1 to Wakefield) 	3477 [695] go to school in this PA (census) <ul style="list-style-type: none"> • 2543 [509] Live in this PA • 778 [156] Live in other PAs • 156 [31] Live outside Kirklees
<ul style="list-style-type: none"> • Average number of places used per year group • Number of Year 7 places available • Trend in number of children living in this PA per year group 	<ul style="list-style-type: none"> • 695 • 753 (PAN 2021/22) • Incline to 2022 followed by declining trend 
Place planning strategy (assuming current patterns of migration, housing occupancy, parental preference etc) <ul style="list-style-type: none"> • Based on NHS population data the projected need for places is above capacity of available places. • On balance, more children travel OUT of the PA to schools in neighbouring PAs • A significant number of children travel OUT of the PA to schools in Leeds • Additional places will be required across the wider North Kirklees area to meet anticipated peak in the basic need for school places. 	

Number of Pupils	PAA of Residence															
	Birkenshaw CE(C) Primary School	Birstall Primary Academy	Carlinghow Academy	East Bierley CE(VC) Primary School	Field Lane J I & N School	Fieldhead Primary Academy	Gomersal Primary School / Gomersal St Mary's CE(C) Primary School	Healey J I & N School	Lydgate J & I School	Manorfield I & N School / Staincliffe CE (VC) Junior School	Mill Lane Primary School	Park Road J I & N School	Purlwell I & N School / Hyrstmount Junior School	Warwick Road Primary School	Windmill CE (VC) Primary School	Grand Total
Batley Girls High School		3	57		50	14	2	78	51	191	11	40	131	50	15	693
Batley Grammar School	2	33	119		19	26	5	71	27	118	6	46	54	31	60	617
BBG Academy	238	57	11	91	1	106	241							1	22	768
Castle Hall Academy			5		4		1	6		6	2	1	1	1		27
Colne Valley High School						1										1
Heckmondwike Grammar School	10	4	23	9	7	1	46	11	10	33	2	5	9	9	29	208
Honley High School			1													1
Manor Croft Academy		2	12		2	5	1	5	14	10	23	2	1	2	3	82
Moor End Academy	1									1						2
Netherhall Learning Campus High School						1										1
Newsome Academy			1								1			1		3
North Huddersfield Trust School			2													2
Royds Hall, A SHARE Academy							1	1	1							3
Salendine Nook High School Academy			1													1
Shelley College, A SHARE Academy															1	1
Spenn Valley High School	2	3	14			2	12	15		19					1	68
St John Fisher Catholic Voluntary Academy	10	17	59	1	2	9	20	36	15	56	9	4	1	3	25	267
The Mirfield Free Grammar and Sixth Form			3				1	2	1	2			3	1	1	14
Thornhill Community, A SHARE Academy		1				1	1	4		1		1	2			11
Upper Batley High School		3	28		36	1	1	52	27	130	2	37	92	52	4	465
Westborough High School		1	5			4		20	2	30			6	3		71
Whitcliffe Mount School	19	2	7	5		7	97	2	1	1					1	142
Grand Total	282	126	348	106	121	178	429	303	149	598	56	136	300	154	162	3,448

Planning Area 24. Batley, Birkenshaw, Birstall & Gomersal Table D. Where do children attending school in Batley, Birkenshaw, Birstall & Gomersal live? Y7 - Y11 (Jan 2020) PAA of Residence	School Attended				Grand Total
	Batley Girls High School	Batley Grammar School	BBG Academy	Upper Batley High School	
Birkby I & N School / Birkby Junior School		2			2
Birkenshaw CE(C) Primary School		2	238		240
Birstall Primary Academy	3	33	57	3	96
Boothroyd Primary Academy	6	3		5	14
Carlinghow Academy	57	119	11	28	215
Carlton J & I School	36	5		43	84
Co-op Academy Smithies Moor	49	12	9	18	88
Crowlees CE (VC) J & I School	1				1
Diamond Wood Community Academy / Ravensthorpe CE (VC) Junior School	10	4		18	32
Earlsheaton Infant School / Bywell CE (VC) Junior School	2		1	1	4
East Bierley CE(VC) Primary School			91		91
Eastborough J I & N School	6	1	1	9	17
Field Lane J I & N School	50	19	1	36	106
Fieldhead Primary Academy	14	26	106	1	147
Gomersal Primary School / Gomersal St Mary's CE(C) Primary School	2	5	241	1	249
Hanging Heaton CE (VC) J & I School	1	4		2	7
Headlands CE (VC) J I & N School	1	2	4		7
Healey J I & N School	78	71		52	201
Heaton Avenue Primary School			1		1
Heckmondwike Primary School	116	27	6	22	171
High Bank J I & N School		1	1		2
Hightown J, I & N School	1	5	3		9
Hopton Primary School		1	1		2
Howard Park Community School	1		2		3
Lindley CE Infant School / Lindley Junior School				1	1
Lydgate J & I School	51	27		27	105
Manorfield I & N School / Staincliffe CE (VC) Junior School	191	118		130	439
Mill Lane Primary School	11	6		2	19
Millbridge J I & N School	13	6	6	6	31
Norristhorpe J & I School	5		1	1	7
Old Bank Academy			1		1
Overthorpe CofE Academy		5	2		7
Park Road J I & N School	40	46		37	123
Pentland I & N School / Headfield CE (VC) Junior School	12	4		9	25
Purlwell I & N School / Hyrstmount Junior School	131	54		92	277
Savile Town CE(VC) I & N School / Headfield CE (VC) Junior School	11	1		2	14
Scholes Village Primary School		2			2
Shaw Cross I & N School / Bywell CE (VC) Junior School	5	5		3	13
St Johns CE (VC) Infant School / Westmoor Primary School	27	24		25	76
Thornhill J & I School	1			1	2
Thornhill Lees CE (vC) I & N School / Headfield CE (VC) Junior School	37	13		22	72
Warwick Road Primary School	50	31	1	52	134
Westmoor Primary School	24	13	1	26	64
Whitechapel C of E Primary			19		19
Windmill CE (VC) Primary School	15	60	22	4	101
Grand Total	1,058	757	827	679	3,321