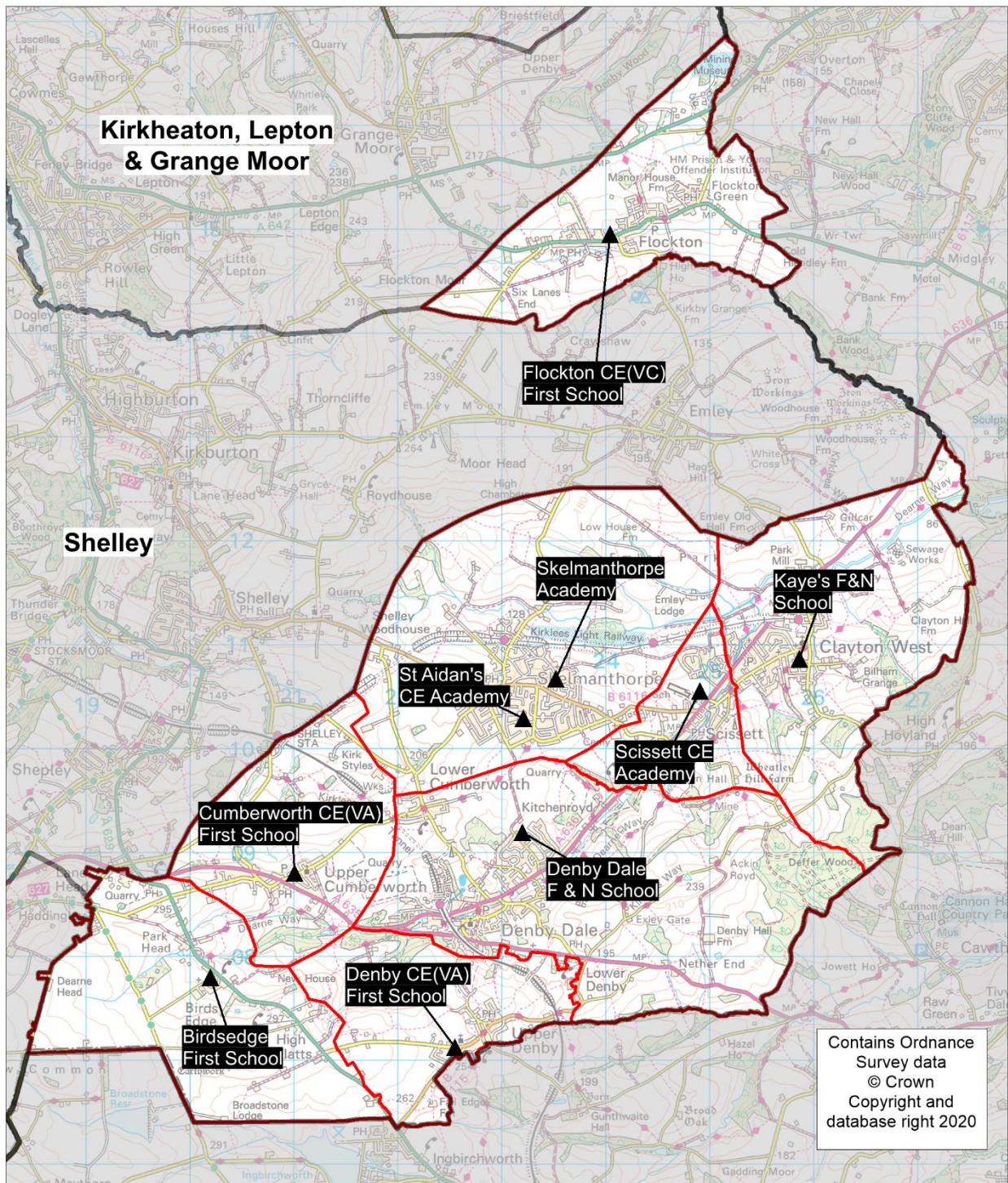


Planning Area 23: Skelmanthorpe & Denby Dale




- ❖ Birdsedge First School
- ❖ Cumberworth CE(VA) First School
- ❖ Denby CE(VA) First School
- ❖ Denby Dale F & N School
- ❖ Flockton CE(VC) First School
- ❖ Kaye's F & N School
- ❖ Scissett CE Academy
- ❖ Skelmanthorpe Academy
- ❖ St Aidan's CE Academy

Overview: The chart on page 185 (and Table B on page 186) shows that the population is declining. This is an area in the LA that has a 3-tier system of first and middle schools. The schools in this planning area serve a semi-rural cluster of small settlements (including some rural schools).

In 2019/20 there were some unfilled Reception places.

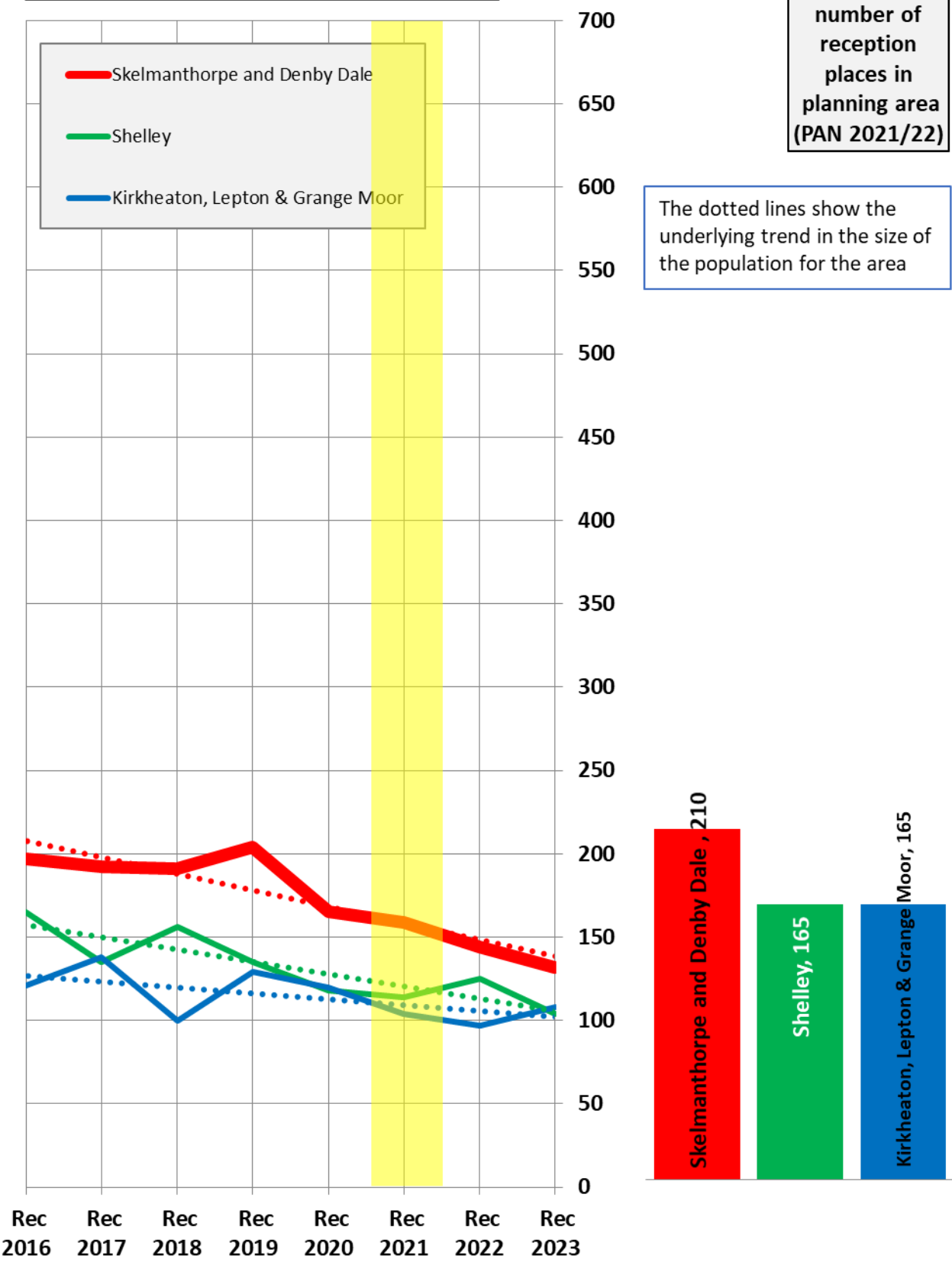
For 2020/21 at national offer day there were sufficient places available to meet basic need demand, with a number of unfilled Reception places available across most schools. The pattern of pupil distribution illustrates that the vast majority of children (89%) living in the planning area attend schools in the area, with a small number of pupils (5%) attending schools here from neighbouring planning areas.

For 2021, 2022 and 2023 population data indicate a declining trend. Many schools serve small rural settlements and have small admission numbers. In this large planning area there has been significant house building over recent years. Some sites have completed; some remain in progress; and there remains potential for further housing development. Even modest housing development can have a disproportionate impact on small rural schools where there may be limited opportunity for an alternative school within a reasonable travelling distance. Any need to address this potential issue in the future will need to be carefully balanced with the declining population and the sustainability of schools. For this reason, this area will be kept under review.

Place planning summary for Planning Area 23. Skelmanthorpe and Denby Dale	
Place planning data for three cohorts of children: Reception, Y1 and Y2 From NHS Jan 2020 and School Census Jan 2020 Note numbers in [square brackets] show the average number of children per year group	
580 [193] children live in this PA (NHS) <ul style="list-style-type: none"> • 515 [172] go to schools in this PA • 44 [15] go to schools in other Kirklees PAs • 2 [1] go to schools in non-mainstream provisions • 19 [6] go to schools in other LAs or have no school information available (at 2020/21 national offer day 3 was allocated reception places in Barnsley and 2 in Wakefield) 	568 [189] children go to school in this PA (Census) <ul style="list-style-type: none"> • 515 [172] Live in this PA • 29 [10] Live in other PAs • 24 [8] Live outside Kirklees
Average number of places used per year group Number of Reception places available (PAN 2021/22) Trend in number of children living in this PA per year group	189 210 decline 
Place planning strategy (assuming current patterns of migration, housing occupancy, parental preference etc) <ul style="list-style-type: none"> • Based on population data the projected need for places is below the capacity of available places • On balance, more children travel IN to schools in the PA from neighbouring PAs and other LAs • No need for additional places. This will be kept under review in light of potential housing development 	

Planning Area 23. Skelmanthorpe and Denby Dale
Chart showing pupil population trends and available school places

population trends in neighbouring planning areas
Reception 2016 to Reception 2023 (NHS)



The chart above shows the size of each year group in the child population in the planning area and the neighbouring planning areas for Reception cohorts Sep 2016 to Sep 2023. The dotted line shows the underlying trend in the size of the pupil population for each area.

The bar chart shows the number of Reception class places available in each planning area, based on the Published Admission Numbers (PANs) of the schools in the area. The yellow shading highlights the data for Reception classes in September 2021.

Planning Area 23. Skelmanthorpe & Denby Dale																
Table A. Number on roll - pupil census January 2020																
School Name	PAN 2021/22		Nursery					First School								Total Pupils
	KS1	KS2	< 2 PT	2+ PT	3+ PT	4+ PT	FT	Primary								
								4+ PT	4+ FT	5+	6+	7+	8+	9+	10+	
Birdsedge First School	15	15	0	0	0	0	0	0	9	11	7	5	16	14	0	62
Cumberworth C.E.(A) First School	20	20	0	0	0	0	0	0	18	20	17	23	23	24	0	125
Denby C.E. (A) First School	10	10	0	0	0	0	0	0	10	11	10	11	16	15	0	73
Denby Dale First & Nursery School	30	33	0	0	0	0	0	0	20	19	21	28	25	27	0	140
Flockton CE (C) First School	15	15	0	0	0	0	0	0	15	16	16	17	15	16	0	95
Kaye's First & Nursery School	30	32	0	3	13	0	0	0	29	28	29	28	28	24	0	182
Scissett CE Academy	30	30	0	0	0	0	0	0	28	28	29	31	32	32	0	180
Skelmanthorpe Academy	30	30	0	0	14	0	0	0	30	26	29	23	24	21	0	167
St Aidan's Church of England Academy	30	30	0	0	0	0	0	0	31	30	31	28	31	19	0	170
	210	215	0	3	27	0	0	0	190	189	189	194	210	192	0	

Planning Area 23. Skelmanthorpe and Denby Dale															
Table B. Number of pupils in each year cohort resident in the planning area - school year 2019-20 - (NHS Jan 2020)															
future reception year groups				First School 2019/20				Middle School 2019/20				Secondary 2019/20			
				Early years/KS1		Key Stage 2				Key Stage 3			KS4		
Reception Sep 2023	Reception Sep 2022	Reception Sep 2021	Reception Sep 2020	Reception 2019/20	Year 1	Year 2	Year 3	Year 4	Year 5	Year 6	Year 7	Year 8	Year 9	Year 10	Year 11
132	144	159	165	204	191	192	197	216	188	198	201	195	198	190	186

Planning Area 23. Skelmanthorpe & Denby Dale Table C. Where do children living in the Skelmanthorpe & Denby Dale planning area go to school? Reception - Year 6 (Jan 2020) School Attended	PAA of Residence								
	Birdsedge First School	Cumberworth CE (A) First School	Denby CE (A) First School	Denby Dale First and Nursery School	Flockton CE (VC) First School	Kaye's F & N School	Scissett CE Academy	Skelmanthorpe Academy	Grand Total
Birdsedge First School	18	3	1	6	1	1			30
Cumberworth C.E.(A) First School	3	33	4	47		6	2	9	104
Dalton School J I N	1				1			1	3
Denby C.E. (A) First School	3	2	21	27		5	1	5	64
Denby Dale First & Nursery School	1			111		8	2	7	129
Emley First School				1	20	6	2	9	38
Flockton CE (C) First School					90				90
Grange Moor Primary School					7				7
Highburton C.E. (VC) First School				1				1	2
Hinchliffe Mill Junior & Infant School						1			1
Hopton Primary School					2				2
Kaye's First & Nursery School				8		124	14	6	152
Kirkburton C. E. (A) First School					2	1	2		5
Kirkburton Middle School	1	1		1		1		2	6
Mill Lane Primary School					3				3
Millbridge, A SHARE Primary Academy					2				2
Moorlands Primary School							1		1
New Mill Infant School	2								2
Oak CE Primary School							1		1
Rowley Lane J I & N School				1	2	1		3	7
Scissett CE Academy	2	1	2	12	8	68	53	19	165
Scissett Middle School	3	7	2	47	12	43	8	56	178
Shelley First School				3		1		4	8
Shepley First School	3			1				4	8
Skelmanthorpe Academy				4		4	7	127	142
St Aidan's Church of England Academy	1	1		7		4	4	144	161
St. Paulinus Catholic Primary School						1			1
Thornhill J & I School					3				3
Thurstonland Endowed (VC) First School		1						1	2
Grand Total	38	49	30	277	153	275	97	398	1,317

Planning Area 23. Skelmanthorpe & Denby Dale Table D. Where do children attending school in Skelmanthorpe & Denby Dale live? Reception - Year 6 (Jan 2020) PAA of Residence	School Attended										
	Birdsedge First School	Cumberworth C.E.(A) First School	Denby C.E. (A) First School	Denby Dale First & Nursery School	Flockton CE (C) First School	Kaye's First & Nursery School	Scissett CE Academy	Scissett Middle School	Skelmanthorpe Academy	St Aidan's Church of England Academy	Grand Total
Almondbury Community School							1		1	1	3
Birdsedge First School	18	3	3	1			2	3		1	31
Birkby I & N School / Birkby Junior School	1										1
Birstall Primary Academy		1									1
Crow Lane Primary and Foundation Stage School				1				1			2
Cumberworth CE (A) First School	3	33	2				1	7		1	47
Denby CE (A) First School	1	4	21				2	2			30
Denby Dale First and Nursery School	6	47	27	111		8	12	47	4	7	269
Emley First School		2		1	1	5	3	2	1		15
Flockton CE (VC) First School	1				90	2	9	12			114
Grange Moor Primary School								2			2
Hade Edge J & I School										1	1
Hepworth J & I School	1							2			3
Highburton CE (C) First School		1						1	1		3
Hillside Primary School										1	1
Hinchliffe Mill J & I School							2				2
Kaye's F & N School	1	6	5	8		124	68	43	4	4	263
Kirkburton CE (A) First School				2		1	1				4
Meltham Moor Primary School	1										1
Mount Pleasant Primary School				1							1
Netherton I & N School									3		3
New Mill Infant School / New Mill Junior School	4		1					2			7
Old Bank Academy					1						1
Paddock J I & N School		1									1
Scholes (Holmfirth) J & I School	1	1									2
Scissett CE Academy		2	1	2		14	53	8	7	4	91
Shelley First School	4	5		3				3	1	2	18
Shepley First School	5	8	1				2	3		1	20
Skelmanthorpe Academy		9	5	7		6	19	56	127	144	373
Thornhill J & I School							1				1
Upperthong J & I School				2							2
Grand Total	47	123	66	139	92	160	176	194	149	167	1,313