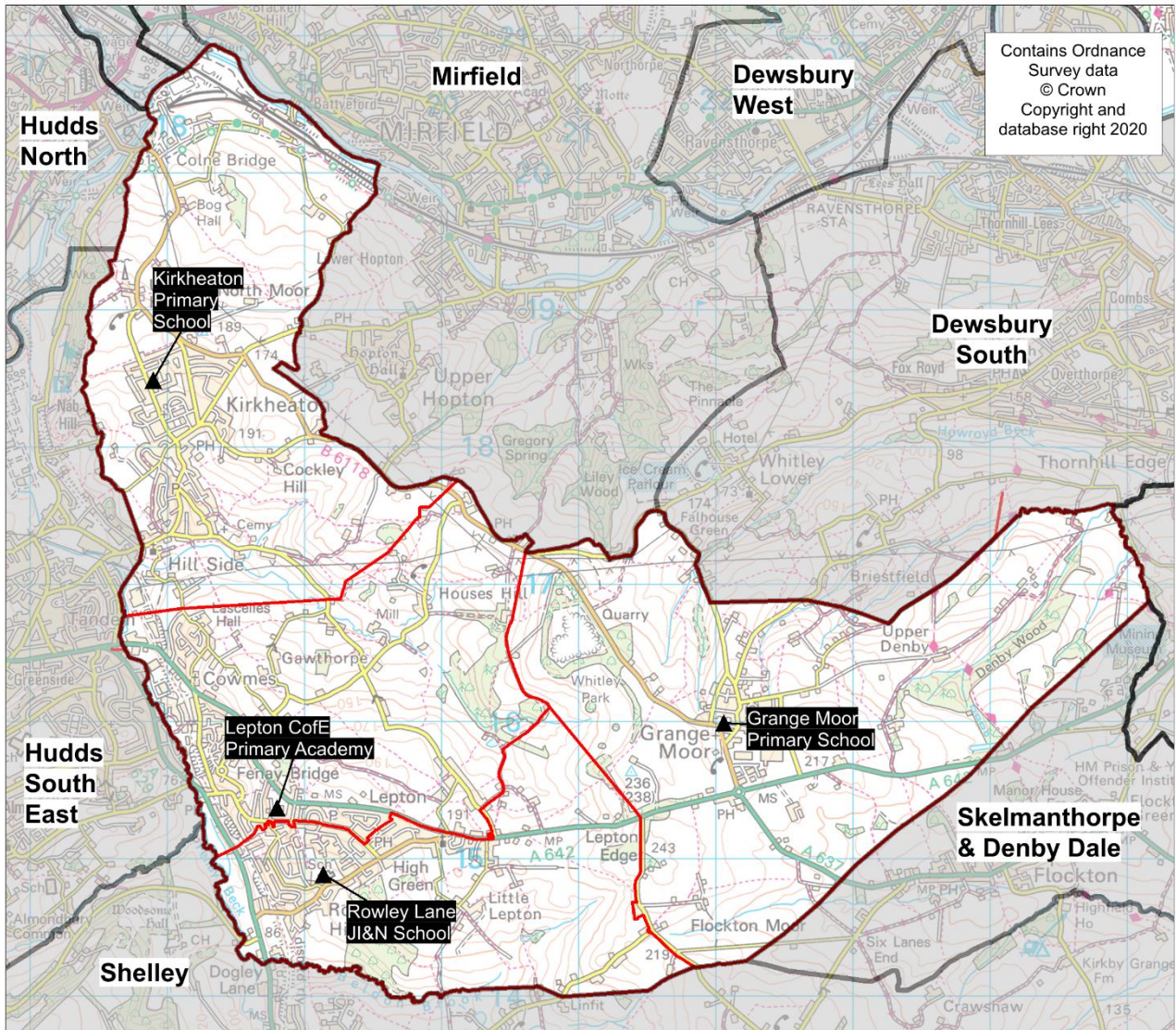


Planning Area 18: Kirkheaton, Lepton & Grange Moor



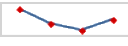
- ❖ Grange Moor Primary School
- ❖ Kirkheaton Primary School
- ❖ Lepton C of E Primary Academy
- ❖ Rowley Lane H J I & N School

Overview: The chart on page 155 (and Table B on page 156) shows that the demand for Reception places from children resident in is planning area will be broadly static. Schools are popular in this area with pupils securing places here from the neighbouring planning areas, mainly Huddersfield South East.

In 2019/20 there were a small number of unfilled Reception places.

In 2020/21 there were a modest number of unfilled places at national offer day despite parental preference showing a continuing trend to secure places in this planning area from other areas. The pattern of pupil distribution illustrates that the majority of children (86%) living in the planning area attend schools in the area, with a number of pupils (31%) attending schools here from neighbouring planning areas.

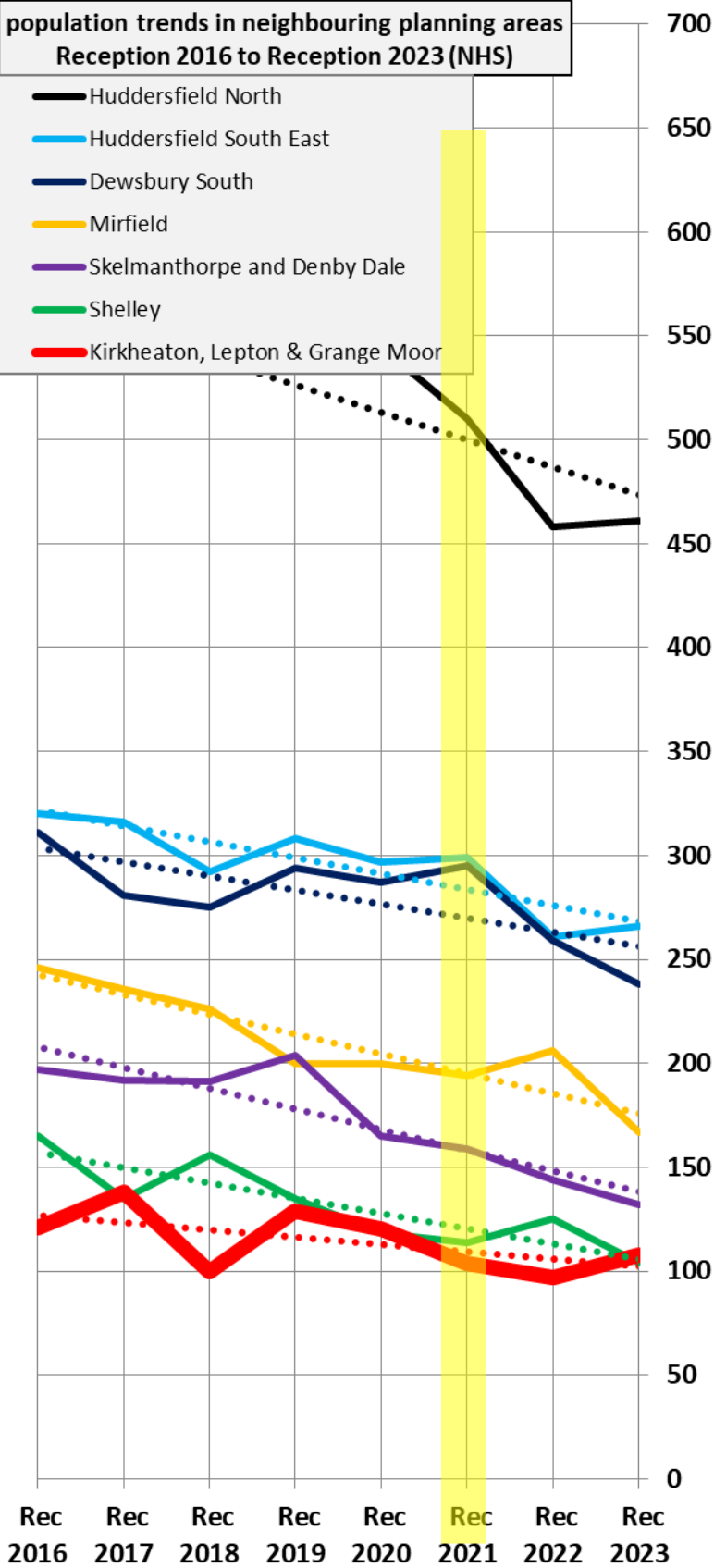
For 2021, 2022 and 2023 population data indicate a broadly static position overall. There are a number of housing developments proposed in the Local Plan which are likely to have an impact on demand in the longer term. However, with surplus places available and significant inward migration of children from outside the area, there are no plans to change the number of available places.

Place planning summary for Planning Area 18. Kirkheaton, Lepton & Grange Moor	
Place planning data for three cohorts of children: Reception, Y1 and Y2 From NHS Jan 2020 and School Census Jan 2020 Note numbers in [square brackets] show the average number of children per year group	
359 [120] children live in this PA (NHS) <ul style="list-style-type: none"> • 308 [103] go to schools in this PA • 45 [15] go to schools in other Kirklees PAs • 2 [1] go to schools in non-mainstream provisions • 4 [1] go to schools in other LAs or have no school information available (at 2020/21 national offer day none was allocated a reception place in another LA) 	447 [149] children go to school in this PA (Census) <ul style="list-style-type: none"> • 308 [103] Live in this PA • 138 [46] Live in other PAs • 1 [0] Live outside Kirklees
Average number of places used per year group Number of Reception places available (PAN 2021/22) Trend in number of children living in this PA per year group	149 165 broadly static 
Place planning strategy (assuming current patterns of migration, housing occupancy, parental preference etc) <ul style="list-style-type: none"> • Based on population data the projected need for places is well below the capacity of available places • On balance, more children travel IN to schools in the PA from neighbouring PAs • No need for additional places. 	

Planning Area 18. Kirkheaton, Lepton & Grange Moor
Chart showing pupil population trends and available school places

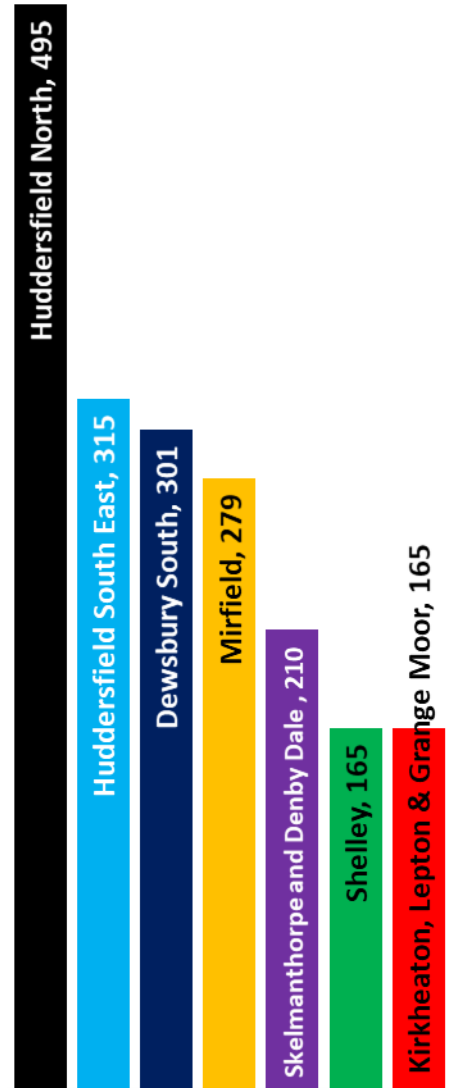
population trends in neighbouring planning areas
Reception 2016 to Reception 2023 (NHS)

- Huddersfield North
- Huddersfield South East
- Dewsbury South
- Mirfield
- Skelmanthorpe and Denby Dale
- Shelley
- Kirkheaton, Lepton & Grange Moor



number of reception places in planning area (PAN 2021/22)

The dotted lines show the underlying trend in the size of the population for the area



The chart above shows the size of each year group in the child population in the planning area and the neighbouring planning areas for Reception cohorts Sep 2016 to Sep 2023. The dotted line shows the underlying trend in the size of the pupil population for each area.

The bar chart shows the number of Reception class places available in each planning area, based on the Published Admission Numbers (PANs) of the schools in the area. The yellow shading highlights the data for Reception classes in September 2021.

Planning Area 18. Kirkheaton, Lepton & Grange Moor																
Table A. Number on roll - pupil census January 2020																
School Name	PAN 2021/22		Nursery					Primary						Total Pupils		
	KS1	KS2	< 2 PT	2+ PT	3+ PT	4+ PT	FT	4+ PT	4+ FT	5+	6+	7+	8+		9+	10+
Grange Moor Primary School	15	15	0	0	0	0	0	0	13	10	14	15	12	16	8	88
Kirkheaton Primary School	60	60	0	0	28	1	0	0	55	40	56	53	54	56	60	403
Lepton CE(C) JIN School	30	33	0	0	21	0	0	0	29	22	29	27	30	30	32	220
Rowley Lane J I & N School	60	66	0	0	29	0	9	0	59	61	59	58	59	66	62	462
	165	174	0	0	78	1	9	0	156	133	158	153	155	168	162	

Planning Area 18. Kirkheaton, Lepton & Grange Moor															
Table B. Number of pupils in each year cohort resident in the planning area - school year 2019-20 - (NHS Jan 2020)															
future reception year groups				infant 2019/20			junior 2019/20				secondary 2019/20				
				Early years/KS1			Key Stage 2				Key Stage 3			KS4	
Reception Sep 2023	Reception Sep 2022	Reception Sep 2021	Reception Sep 2020	Reception 2019/20	Year 1	Year 2	Year 3	Year 4	Year 5	Year 6	Year 7	Year 8	Year 9	Year 10	Year 11
108	97	104	120	129	100	138	121	130	140	140	168	139	150	140	139

Planning Area 18. Kirkheaton, Lepton & Grange Moor Table C. Where do children living in the Kirkheaton, Lepton & Grange Moor planning area go to school? Reception - Year 6 (Jan 2020) School Attended	PAA of Residence				
	Grange Moor Primary School	Kirkheaton Primary School	Lepton CE (VC) J I & N School	Rowley Lane J I & N School	Grand Total
Hill View Academy			3		3
Battysford CE (VC) Primary School		3			3
Berry Brow Infants and Nursery School			1		1
Crossley Fields Junior & Infant School		3			3
Crowlees C E (VC) J & I School		3	1		4
Dalton School J I N		9	5	4	18
Emley First School	1		9	3	13
Farnley Tyas C E (C) First School			1		1
Grange Moor Primary School	48	4	2	4	58
Headlands CE (C) J I & N School			2		2
Highburton C.E. (VC) First School	1		3	5	9
Holy Spirit Catholic Primary School		1			1
Honley CE (VC) J I & N School		2			2
Hopton Primary School		5			5
Kirkburton C. E. (A) First School				2	2
Kirkburton Middle School		1	3		4
Kirkheaton Primary School	1	228	12	1	242
Lepton CE(C) JIN School	2	2	131	10	145
Lindley Junior School		1			1
Moldgreen Community Primary School			3	1	4
New Mill Infant School				1	1
Newsome Junior School		1			1
Overthorpe CofE Academy	2	1			3
Netherhall Learning Campus Junior School		4	1		5
Netherhall St James (VC) C of E Infant and Nursery School		1			1
Rowley Lane J I & N School		8	167	128	303
Luck Lane, A SHARE Primary Academy		1			1
Scissett Middle School	2				2
Shelley First School		2	4		6
St Joseph's Catholic Primary School (Huddersfield)		9	5	1	15
St Patrick's Catholic Primary School (Huddersfield)			3		3
St. Paulinus Catholic Primary School	1				1
Thornhill J & I School				2	2
Thurstonland Endowed (VC) First School				1	1
New Mill Junior School				1	1
Grand Total	58	289	356	164	867

Planning Area 18. Kirkheaton, Lepton & Grange Moor Table D. Where do children attending school in Kirkheaton, Lepton & Grange Moor live? Reception - Year 6 (Jan 2020) PAA of Residence	School Attended				
	Grange Moor Primary School	Kirkheaton Primary School	Lepton CE(C) JIN School	Rowley Lane J I & N School	Grand Total
Beaumont Primary Academy / Oak CE Primary School		9	11	48	68
Brockholes CE (VC) J & I School		22	18	31	71
Christ Church CE Academy		3		1	4
Crossley Fields J & I School			1		1
Dalton School J I N	1				1
Denby Dale First and Nursery School		5			5
Diamond Wood Community Academy / Ravensthorpe CE (VC) Junior School		2	1		3
Fixby J & I School	1	34	11	12	58
Flockton CE (VC) First School				1	1
Grange Moor Primary School	1				1
Healey J I & N School		2			2
Heaton Avenue, A SHARE Primary Academy	8			2	10
Highburton CE (C) First School	48	1	2		51
Hillside Primary School	2				2
Honley CE (VC) J, I & N School	2				2
Hopton Primary School		1	2	6	9
Kaye's F & N School		2		1	3
Kirkburton CE (A) First School			1		1
Kirkheaton Primary School	3	8			11
Lepton CE (VC) J I & N School				1	1
Lowerhouses CE (VC) J, I & EY School	1			2	3
Moldgreen Community Primary School	4	228	2	8	242
Moorlands Primary School	2	12	131	167	312
Old Bank Academy			1	1	2
Overthorpe CofE Academy		3	1	4	8
Netherhall St James (VC) C of E Infant and Nursery School / Netherhall Learning Campus Junior School		1			1
Rowley Lane J I & N School		3			3
Shelley First School	1				1
Shepley First School	1	21	2	3	27
Skelmanthorpe Academy	4	1	10	128	143
St Thomas CE (VC) Primary School				1	1
Thornhill J & I School			1	1	2
Thornhill Lees CE (vC) I & N School / Headfield CE (VC) Junior School				3	3
Thurstonland Endowed (VC) First School	2	16	1		19
Upperthong J & I School	2				2
Thornhill Lees CE (vC) I & N School / Headfield CE (VC) Junior School	1				1
Thurstonland Endowed (VC) First School				2	2
Upperthong J & I School				1	1
Grand Total	84	374	196	424	1,078