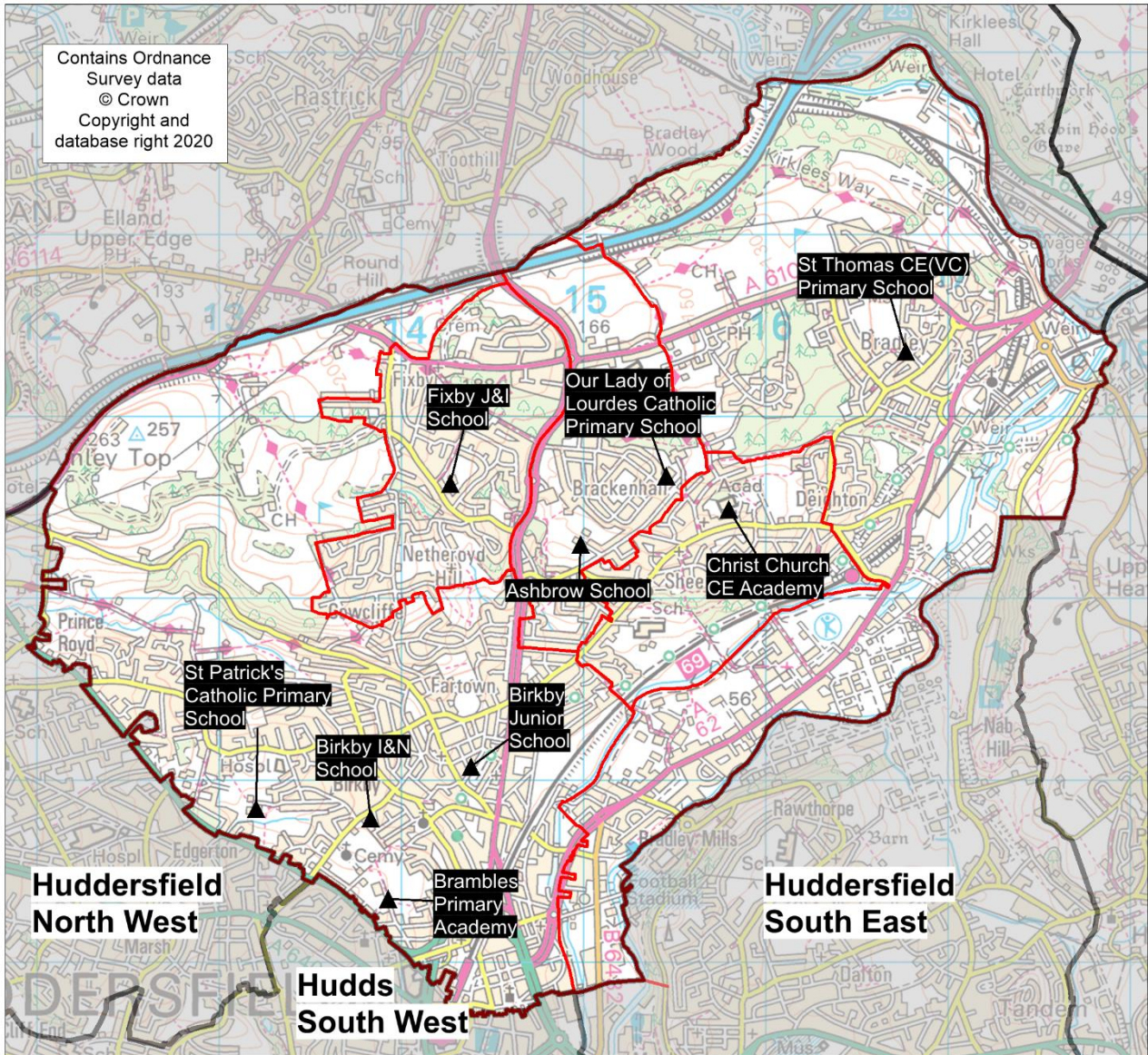


Planning Area 14: Huddersfield North



- ❖ Ashbrow School
- ❖ Birkby I & N School
- ❖ Birkby Junior School
- ❖ Christ Church CE Academy
- ❖ Fixby J & I School
- ❖ Our Lady of Lourdes Catholic Primary School
- ❖ St Patrick's Catholic Primary School (*Hudds*)
- ❖ St Thomas CE(VC) Primary School
- ❖ Brambles Primary Academy


Overview: The chart on page 131 (and Table B on page 132) shows a declining trend which has followed an earlier period of significant population growth.

In 2019/20 there were a number of unfilled Reception places.

In 2020/21 there were some unfilled Reception places available at national offer day. The pattern of pupil distribution illustrates that the majority of children (73%) living in the planning area attend schools in the area, with a number of pupils (9%) attending schools here from neighbouring planning areas. Parental preference continues to be a factor in the net movement of pupils into neighbouring planning areas however this may change over time. The planning area borders Calderdale LA and there is modest outward migration at primary level.

For 2021, 2022 and 2023 population data indicate a decline in population. There are two housing development sites with planning permission. On one site, building has commenced, but will take four to five years to complete. Increased demand is also expected from housing development in the neighbouring Huddersfield North West planning area. With a re-balancing of demand and parental preference over time, spare capacity in schools in this planning area can meet this need.

There is a proposed strategic housing development site in the Local Plan. It is therefore important that the impact of this site on school places remains under constant review, but additional places will only be considered when existing capacity in local schools has been utilised.

Place planning summary for Planning Area 14. Huddersfield North	
Place planning data for three cohorts of children: Reception, Y1 and Y2 From NHS Jan 2020 and School Census Jan 2020 Note numbers in [square brackets] show the average number of children per year group	
1627 [542] children live in this PA (NHS) <ul style="list-style-type: none"> • 1189 [396] go to schools in this PA • 155 [52] go to schools in other Kirklees PAs • 9 [3] go to schools in non-mainstream provisions • 274 [91] go to schools in other LAs or have no school information available (at 2020/21 national offer day 24 were allocated reception places in Calderdale) 	1317 [439] children go to school in this PA (Census) <ul style="list-style-type: none"> • 1189 [396] Live in this PA • 123 [41] Live in other PAs • 5 [2] Live outside Kirklees
Average number of places used per year group Number of Reception places available (PAN 2021/22) Trend in number of children living in this PA per year group	439 495 decline 
Place planning strategy (assuming current patterns of migration, housing occupancy, parental preference etc) <ul style="list-style-type: none"> • Based on population data the projected need for places will be below the capacity of available places • On balance, more children travel OUT of the PA to schools in neighbouring PAs • A number of children travel OUT of the PA to schools in Calderdale • Additional places have been injected into this area partly to address expected demand in Huddersfield North West. There is an identified area of large strategic development indicated in the Kirklees Local Plan which would have a significant impact on local demand for places in the future. 	

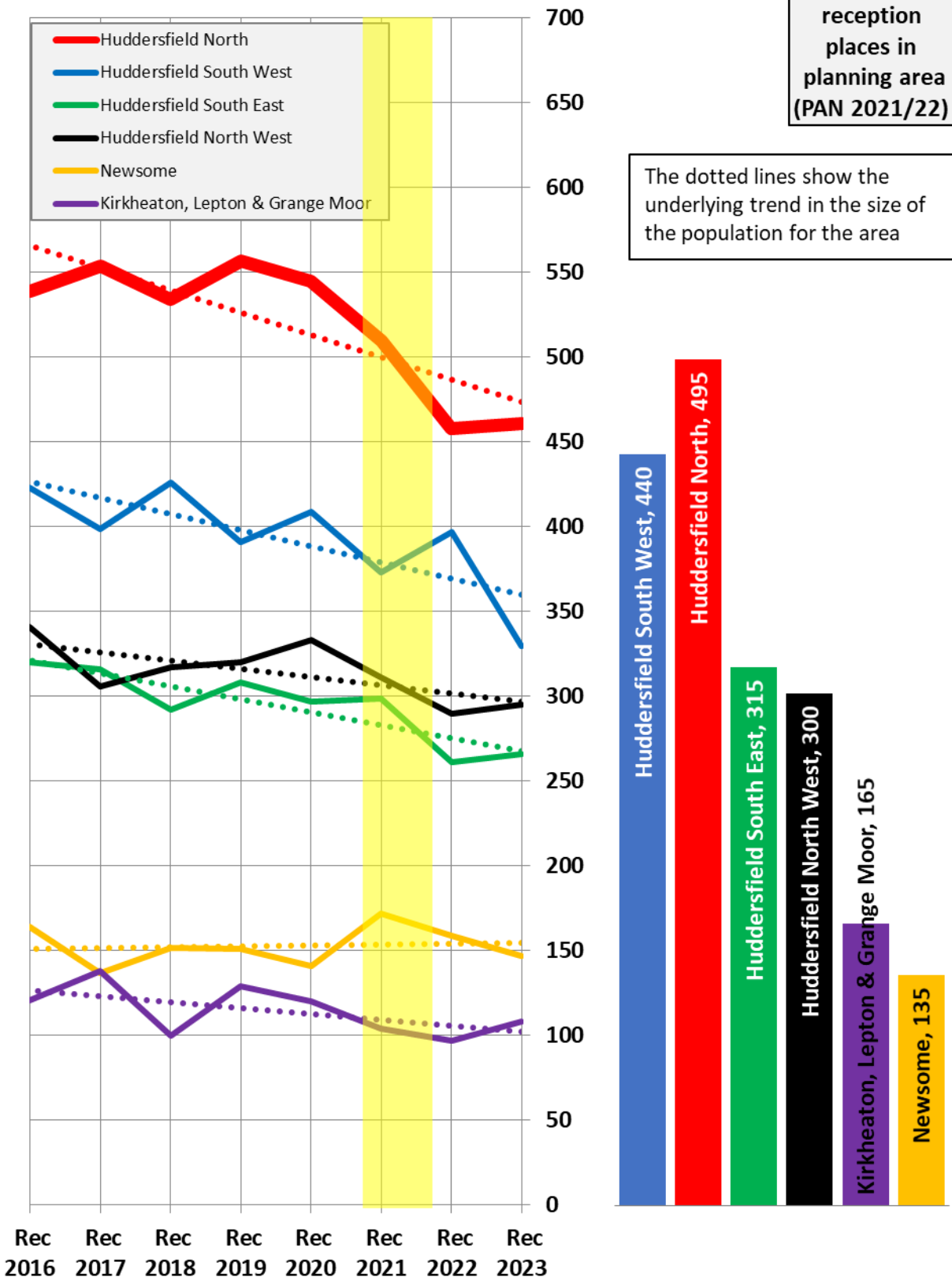
Planning Area 14. Huddersfield North

Chart showing pupil population trends and available school places

population trends in neighbouring planning areas
Reception 2016 to Reception 2023 (NHS)

number of
reception
places in
planning area
(PAN 2021/22)

The dotted lines show the
underlying trend in the size of
the population for the area



The chart above shows the size of each year group in the child population in the planning area and the neighbouring planning areas for Reception cohorts Sep 2016 to Sep 2023. The dotted line shows the underlying trend in the size of the pupil population for each area.

The bar chart shows the number of Reception class places available in each planning area, based on the Published Admission Numbers (PANs) of the schools in the area. The yellow shading highlights the data for Reception classes in September 2021.

Planning Area 14. Huddersfield North																
Table A. Number on roll - pupil census January 2020																
School Name	PAN 2021/22		Nursery					Primary								Total Pupils
	KS1	KS2	< 2 PT	2+ PT	3+ PT	4+ PT	FT	4+ PT	4+ FT	5+	6+	7+	8+	9+	10+	
Ashbrow School	60	60	0	6	30	0	0	0	60	59	58	60	59	56	56	444
Birkby Infant & Nursery School	150		0	12	79	1	12	0	134	142	149	1	0	0	0	530
Birkby Junior School		150	0	0	0	0	0	0	0	0	0	143	140	149	149	581
Brambles Primary Academy	60	60	0	0	0	0	0	0	37	20	0	0	0	0	0	57
Christ Church CE Academy	30	30	0	4	18	1	0	0	24	30	32	29	30	28	29	225
Fixby Junior & Infant School	45	45	0	0	0	0	0	0	39	44	44	42	41	45	43	298
Our Lady of Lourdes Catholic Primary School	30	30	0	1	19	0	0	0	28	30	30	30	29	29	30	226
St Patrick's Catholic Primary School (Huddersfield)	60	60	0	0	0	0	0	0	60	60	60	60	60	60	60	420
St Thomas CE (VC) Primary School	60	60	0	4	27	0	0	0	60	57	59	57	60	59	60	443
	495	495	0	27	173	2	12	0	442	442	432	422	419	426	427	

Planning Area 14. Huddersfield North															
Table B. Number of pupils in each year cohort resident in the planning area - school year 2019-20 - (NHS Jan 2020)															
future reception year groups				infant 2019/20			junior 2019/20				secondary 2019/20				
				Early years/KS1			Key Stage 2				Key Stage 3			KS4	
Reception Sep 2023	Reception Sep 2022	Reception Sep 2021	Reception Sep 2020	Reception 2019/20	Year 1	Year 2	Year 3	Year 4	Year 5	Year 6	Year 7	Year 8	Year 9	Year 10	Year 11
461	458	510	545	557	534	554	539	569	566	553	472	512	528	472	447

Planning Area 14. Huddersfield North Table C. Where do children living in the Huddersfield North planning area go to school? Reception - Year 6 (Jan 2020) School Attended	PAA of Residence					Grand Total
	Ashbrow School	Birkby I & N School / Birkby Junior School	Christ Church CE Academy	Fixby J & I School	St Thomas CE (VC) Primary School	
All Hallows' CE VA Primary School		1				1
Hill View Academy		3	2			5
Ashbrow School	148	83	134		29	394
Battysford CE (VC) Primary School					12	12
Beaumont Primary Academy	1	4			1	6
Berry Brow Infants and Nursery School	1				1	2
Birdsedge First School		1				1
Birkby Infant & Nursery School	7	379	7	2	16	411
Birkby Junior School	8	505	18	3	21	555
Brambles Primary Academy	2	32		1	2	37
Christ Church CE Academy	21	14	138		21	194
Clough Head Junior & Infant School		1				1
Crossley Fields Junior & Infant School					1	1
Crow Lane Primary and Foundation Stage School		1				1
Dalton School J I N	4	2			1	7
Diamond Wood Community Academy					1	1
Farnley Tyas C E (C) First School					1	1
Fixby Junior & Infant School	62	146	27	42	8	285
Golcar Junior Infant & Nursery School		1				1
Grange Moor Primary School					2	2
Hartshead J & I School			1	1	4	6
Hillside Primary School		2		1		3
Honley CE (VC) J I & N School		2				2
Hopton Primary School					3	3
Howard Park Community School			1			1
Kirkburton C. E. (A) First School					1	1
Kirkheaton Primary School			5	2	16	23
Lepton CE(C) JIN School					1	1
Lindley Church of England Infant School	1	17				18
Lindley Junior School	2	27				29
Linthwaite Clough J I & Early Years Unit					1	1
Lowerhouses C. E. (VC) J. I. & EY School		1		2		3
Meltham C.E. (VC) Primary School			1			1
Meltham Moor Primary School		1				1
Moldgreen Community Primary School	1	1	1		8	11
Moorlands Primary School	2	18	1		2	23
Mount Pleasant Primary School		7		1		8
Newsome Junior School		1		1		2
Norristhorpe Junior & Infant School			1		1	2
Oak CE Primary School		8	1			9
Old Bank Academy					3	3
Our Lady of Lourdes Catholic Primary School	75	15	88	2	20	200
Paddock J I & N School		6	3		1	10
Ravensthorpe C.E.(C) Junior School	1					1
Netherhall Learning Campus Junior School	10	15	12	1	53	91
Netherhall St James (VC) C of E Infant and Nursery School	2	8	4		33	47
Reinwood Community Junior School	1	20				21
Reinwood Infant & Nursery School		10			2	12
Luck Lane, A SHARE Primary Academy	3	14			1	18
Lily Park, A SHARE Primary Academy			1		1	2
Scapegoat Hill J & I School		3				3
Spring Grove J I & N School	2	18		2		22
St Joseph's Catholic Primary School (Huddersfield)		4	1		7	12
St Mary's Catholic Primary School					2	2
St Patrick's Catholic Primary School (Huddersfield)	5	189	6	10	25	235
St Thomas CE (VC) Primary School	15	3	40	4	342	404
Grand Total	374	1,563	493	75	644	3,149

Planning Area 14. Huddersfield North Table D. Where do children attending school in Huddersfield North live? Reception - Year 6 (Jan 2020) PAA of Residence	School Attended									
	Ashbrow School	Birkby Infant & Nursery School	Birkby Junior School	Brambles Primary Academy	Christ Church CE Academy	Fixby Junior & Infant School	Our Lady of Lourdes Catholic Primary School	St Patrick's Catholic Primary School (Huddersfield)	St Thomas CE (VC) Primary School	Grand Total
All Hallows' CE VA Primary School/ Hill View Academy	1							5		6
Hill View Academy			1					2		3
Ashbrow School	148	7	8	2	21	62	75	5	15	343
Beaumont Primary Academy / Oak CE Primary School			1	4	4			12		21
Berry Brow I & N School / Newsome Junior School								2		2
Birkby I & N School / Birkby Junior School	83	379	505	32	14	146	15	189	3	1,366
Carlinghow Academy	2									2
Christ Church CE Academy	134	7	18		138	27	88	6	40	458
Woodside Green, A SHARE Primary Academy			2	1				1	1	5
Crow Lane Primary and Foundation Stage School		1	1					5		7
Dalton School J I N	1			1		1		1		4
Field Lane J I & N School								1		1
Fixby J & I School		2	3	1		42	2	10	4	64
Golcar J I & N School								2		2
Hepworth J & I School								1		1
Hillside Primary School		1		2				2		5
Lepton CE (VC) J I & N School								3		3
Lindley CE Infant School / Lindley Junior School	1	4	8	2		4		31	1	51
Linthwaite Clough J I & EY School								3		3
Lowerhouses CE (VC) J, I & EY School	2		1					7		10
Marsden I & N School / Marsden Junior School			1							1
Moldgreen Community Primary School								1		1
Moorlands Primary School	1			3		1	3	21		29
Mount Pleasant Primary School		1			1			7		9
Old Bank Academy									3	3
Paddock J I & N School	1		3	1				10		15
Netherhall St James (VC) C of E Infant and Nursery School / Netherhall Learning Campus Junior School				2	1			4	1	8
Reinwood I & N School / Reinwood Community Junior School	2	4	2	1		2	1	40		52
Lily Park, A SHARE Primary Academy		1						4		5
Slaithwaite CE (VC) J & I School						1		1		2
Spring Grove J I & N School		2	4	3	1			10		20
St Thomas CE (VC) Primary School	29	16	21	2	21	8	20	25	342	484
Wellhouse J & I School								2		2
Whitechapel C of E Primary								2		2
Grand Total	405	425	579	57	201	294	204	415	410	2,990